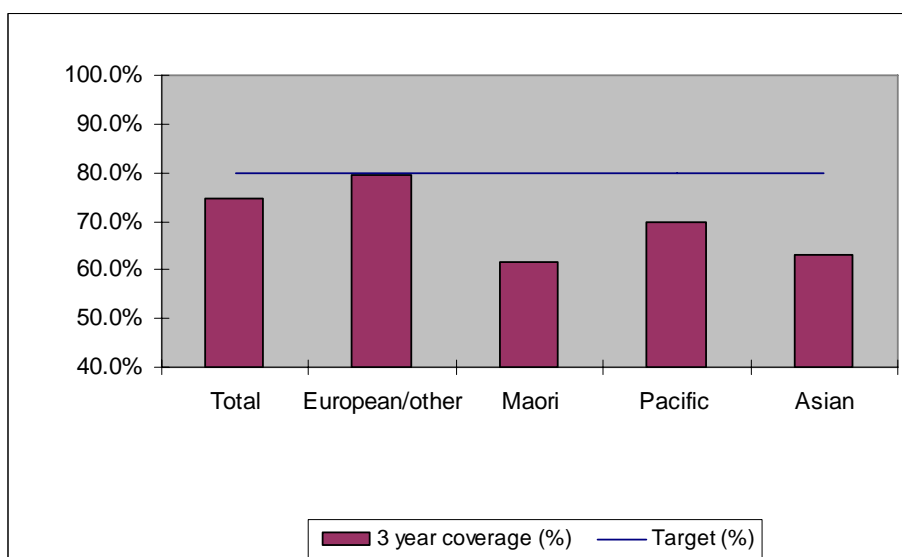


### 1. NCSP coverage - Whanganui DHB Region - 30 June 2011 quarter

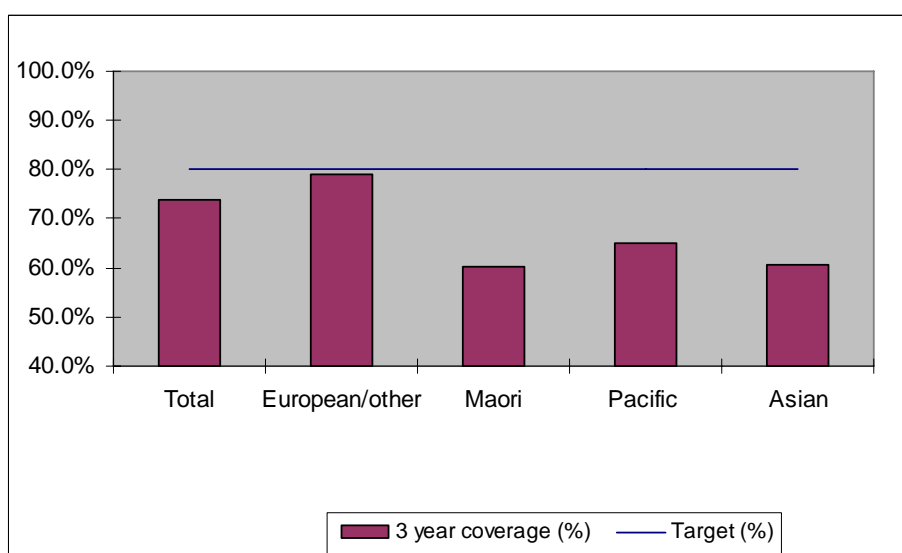
25-69 year old women screened in the three years to 30 June 2011, as a proportion of the hysterectomy adjusted 2006 Census based female population in the Whanganui DHB Region.



	Population	3 year coverage (n)	3 year coverage (%)
<b>Total</b>	15,281	11,405	74.6%
<b>European/other</b>	11,045	8,771	79.4%
<b>Maori</b>	3,621	2,232	61.6%
<b>Pacific</b>	205	143	69.8%
<b>Asian</b>	410	259	63.2%

### 2. NCSP coverage - Whanganui DHB Region - 31 March 2011 quarter

25-69 year old women screened in the three years to 31 March 2011, as a proportion of the hysterectomy adjusted 2006 Census based female population in the Whanganui DHB Region.

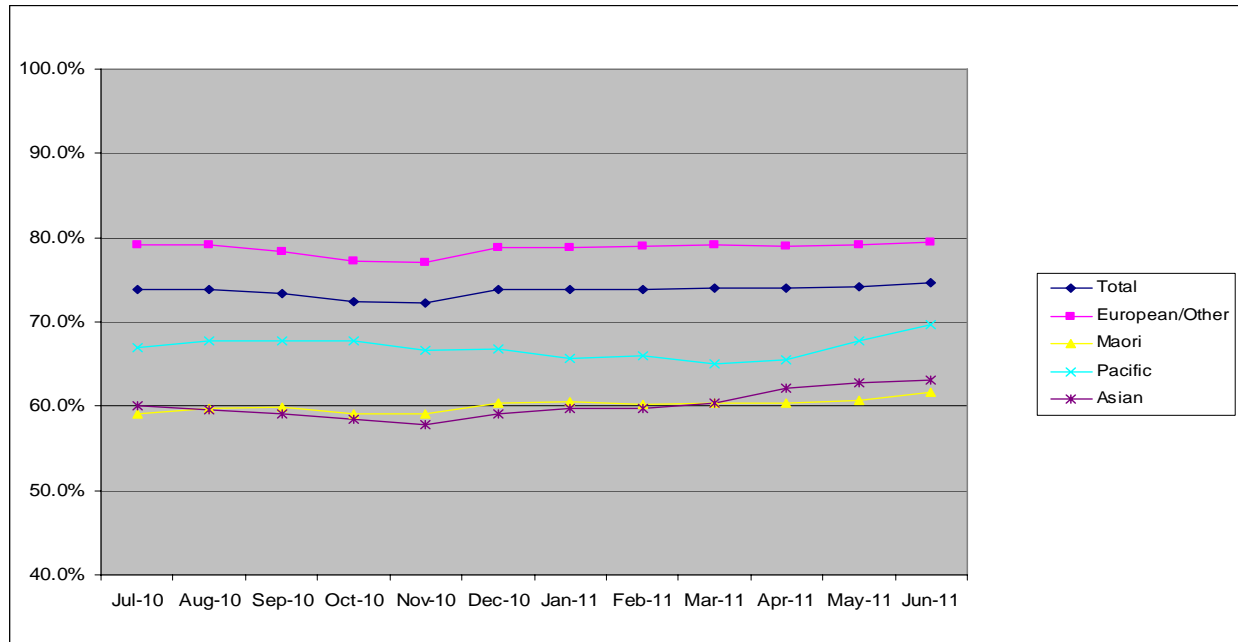


	Population	3 year coverage (n)	3 year coverage (%)
<b>Total</b>	15,292	11,318	74.0%
<b>European/other</b>	11,063	8,753	79.1%
<b>Maori</b>	3,616	2,185	60.4%
<b>Pacific</b>	206	134	65.0%
<b>Asian</b>	407	246	60.4%

### 3. NCSP summary monthly coverage in year to 30 June 2011

#### Whanganui DHB

Monthly coverage trends for 25-69 year old women screened in the three years to 30 June 2011, as a proportion of the hysterectomy adjusted 2006 Census based female population.



Target: 75% for all population groups to 31 December 2010 and 80% for all population groups from 1 January 2011.

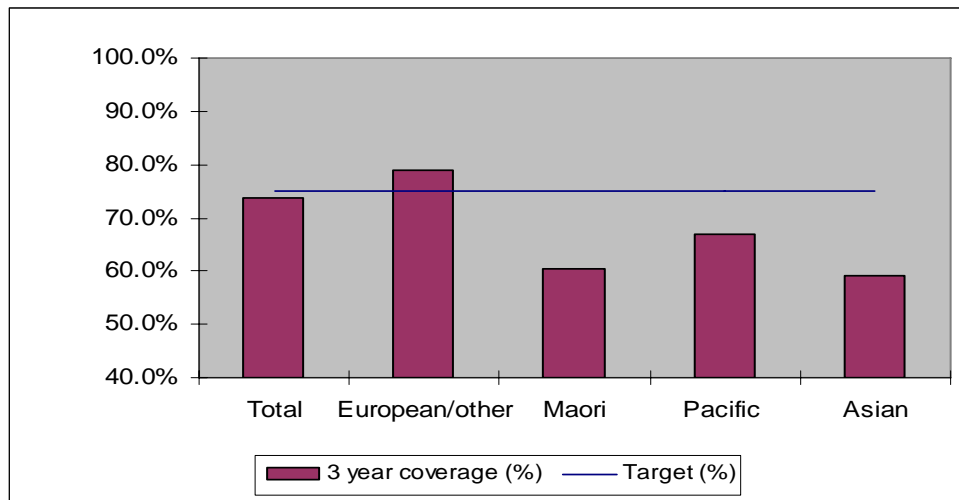
#### How is your DHB performing as at 30 June 2011?

Rank	DHB	June Quarter Performance	Change from previous quarter
1	Taranaki	82.9%	-0.1%
2	Wairarapa	81.7%	0.1%
3	Capital and Coast	79.3%	-0.3%
4	Nelson Marlborough	78.7%	-0.2%
5	Hawke's Bay	78.4%	-0.4%
6	Otago*	78.3%	-0.5%
7	Bay of Plenty	77.3%	-0.4%
8	Hutt Valley	76.9%	-0.4%
9	Lakes	76.9%	0.0%
10	Southland*	75.3%	-0.3%
11	Northland	75.1%	0.7%
12	Waikato	74.9%	0.1%
<b>13</b>	<b>Whanganui</b>	<b>74.6%</b>	<b>0.6%</b>
14	Tairāwhiti	74.5%	1.0%
15	Mid Central	74.3%	0.2%
16	Waitemata	74.0%	-0.5%
17	Canterbury	73.5%	-0.4%
18	Auckland	73.1%	0.3%
19	South Canterbury	72.9%	-2.2%
20	West Coast	68.5%	-1.0%
21	Counties Manukau	67.3%	-0.5%

\* On 1 May 2010 Southland and Otago DHBs merged to create Southern DHB.

#### 4. NCSP coverage - Whanganui DHB Region - 31 December 2010 quarter

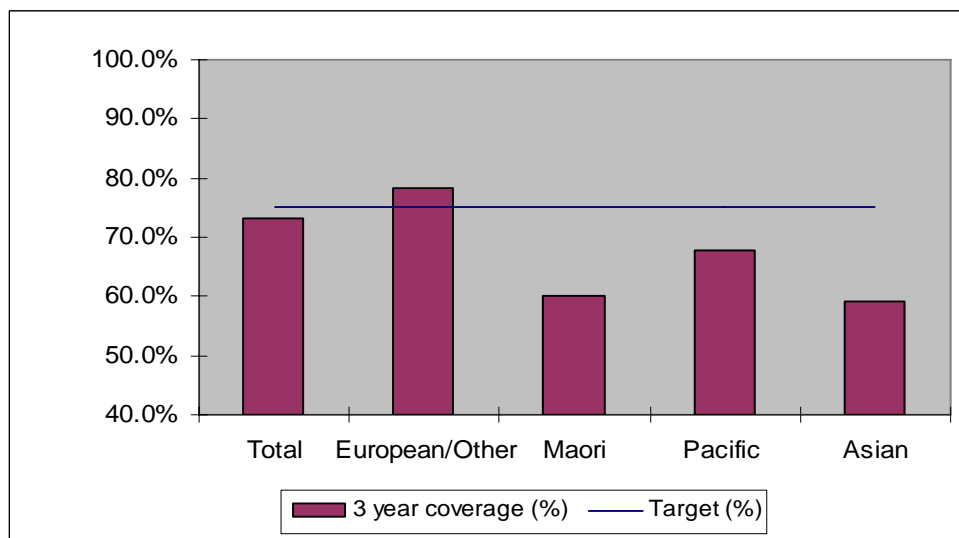
25-69 year old women screened in the three years to 31 December 2010, as a proportion of the hysterectomy adjusted 2006 Census based female population in the Whanganui DHB Region.



	Population	3 year coverage (n)	3 year coverage (%)
<b>Total</b>	15,300	11,300	73.9%
<b>European/other</b>	11,080	8,742	78.9%
<b>Maori</b>	3,609	2,181	60.4%
<b>Pacific</b>	208	139	66.8%
<b>Asian</b>	403	238	59.1%

#### 5. NCSP coverage - Whanganui DHB Region - 30 September 2010 quarter

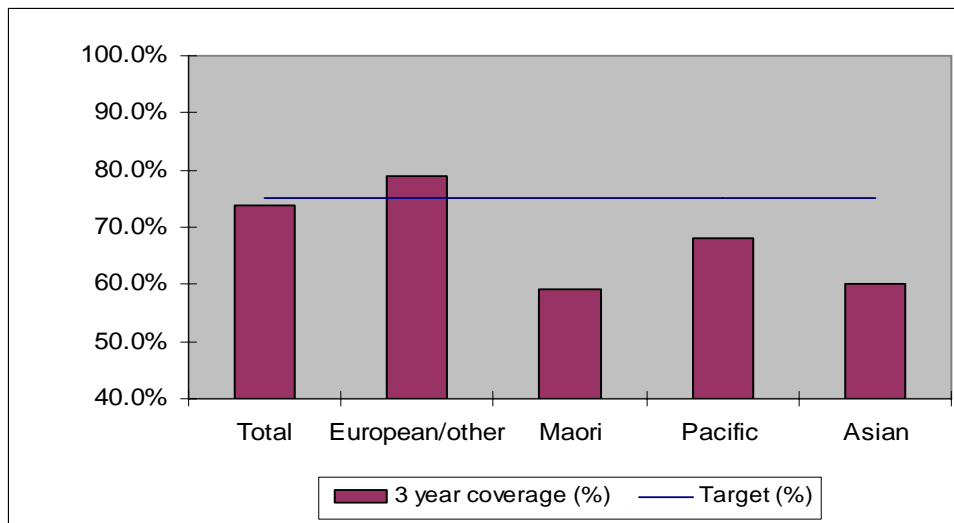
25-69 year old women screened in the three years to 30 September 2010, as a proportion of the hysterectomy adjusted 2006 Census based female population in the Whanganui DHB Region.



	Population	3 year coverage (n)	3 year coverage (%)
<b>Total</b>	15,308	11,225	73.3%
<b>European/other</b>	11,098	8,688	78.3%
<b>Maori</b>	3,603	2,160	60.0%
<b>Pacific</b>	208	141	67.8%
<b>Asian</b>	399	236	59.1%

### 6. NCSP coverage - Whanganui DHB Region - 30 June 2010 quarter

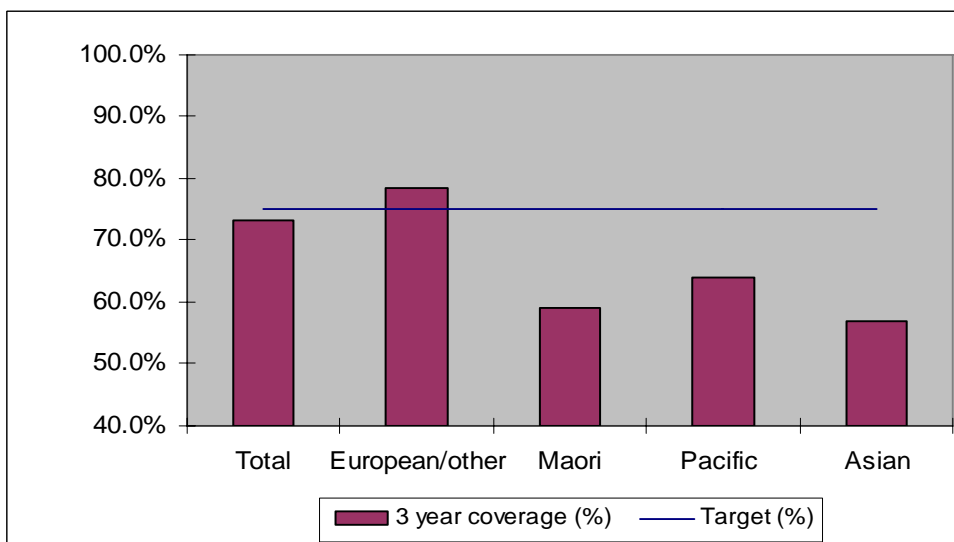
25-69 year old women screened in the three years to 30 June 2010, as a proportion of the hysterectomy adjusted 2006 Census based female population in the Whanganui DHB Region.



	Population	3 year coverage (n)	3 year coverage (%)
<b>Total</b>	15,311	11,286	73.7%
<b>European/other</b>	11,112	8,777	79.0%
<b>Maori</b>	3,595	2,130	59.2%
<b>Pacific</b>	209	142	67.9%
<b>Asian</b>	395	237	60.0%

### 7. NCSP coverage - Whanganui DHB Region - 31 March 2010 quarter

25-69 year old women screened in the three years to 31 March 2010, as a proportion of the hysterectomy adjusted 2006 Census based female population in the Whanganui DHB Region.

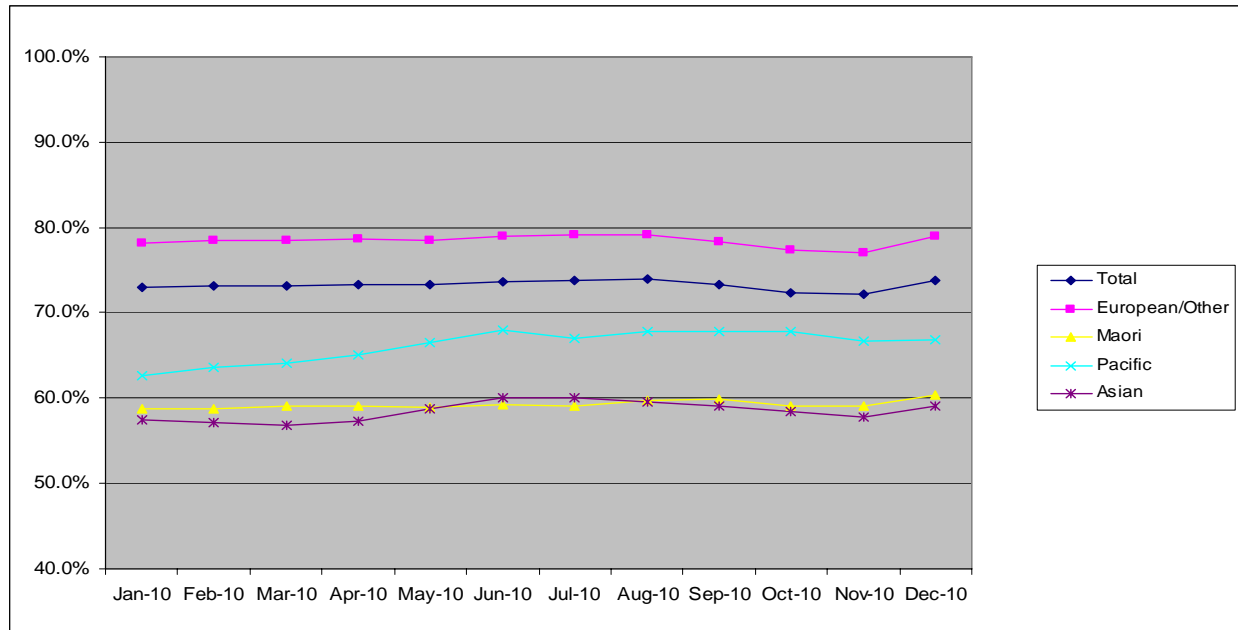


	Population	3 year coverage (n)	3 year coverage (%)
<b>Total</b>	15,342	11,223	73.2%
<b>European/other</b>	11,150	8,747	78.4%
<b>Maori</b>	3,594	2,121	59.0%
<b>Pacific</b>	209	134	64.1%
<b>Asian</b>	389	221	56.8%

## 8. NCSP summary monthly coverage in year to 31 December 2010

### Whanganui DHB

Monthly coverage trends for 25-69 year old women screened in the three years to 2010, as a proportion of the hysterectomy adjusted 2006 Census based female population.



Target: 75% for all population groups

### How is your DHB performing as at 31 December 2010?

Rank	DHB	December Quarter Performance	Change from previous quarter
1	Taranaki	83.5%	-0.1%
2	Wairarapa	81.2%	0.5%
3	Nelson Marlborough	79.7%	-0.4%
4	Capital and Coast	79.6%	0.1%
5	Otago*	79.4%	-0.4%
6	Hawke's Bay	78.6%	0.1%
7	Bay of Plenty	78.4%	-0.3%
8	Hutt Valley	77.7%	0.2%
9	South Canterbury	77.1%	-1.2%
10	Lakes	77.0%	0.2%
11	Southland*	76.0%	0.1%
12	Canterbury	75.2%	-0.2%
13	Waikato	74.9%	0.2%
14	Waitemata	74.8%	-0.2%
15	Northland	74.3%	-0.3%
16	Mid Central	73.9%	0.2%
<b>17</b>	<b>Whanganui</b>	<b>73.9%</b>	<b>0.6%</b>
18	Auckland	72.7%	0.2%
19	Tairāwhiti	70.9%	-0.3%
20	West Coast	70.0%	-0.3%
21	Counties Manukau	68.2%	-0.5%

\* On 1 May 2010 Southland and Otago DHBs merged to create Southern DHB.

## 9. Summary Comments

<b>3 yearly coverage to:</b>	<b>30 June 2011</b>	<b>30 June 2010</b>	<b>Change</b>
<b>Total</b>	74.6%	73.7%	0.9%
<b>European/other</b>	79.4%	79.0%	0.4%
<b>Maori</b>	61.6%	59.2%	2.4%
<b>Pacific</b>	69.8%	67.9%	1.8%
<b>Asian</b>	63.2%	60.0%	3.2%
<b>Ranking</b>	13 of 21	17 of 21	5