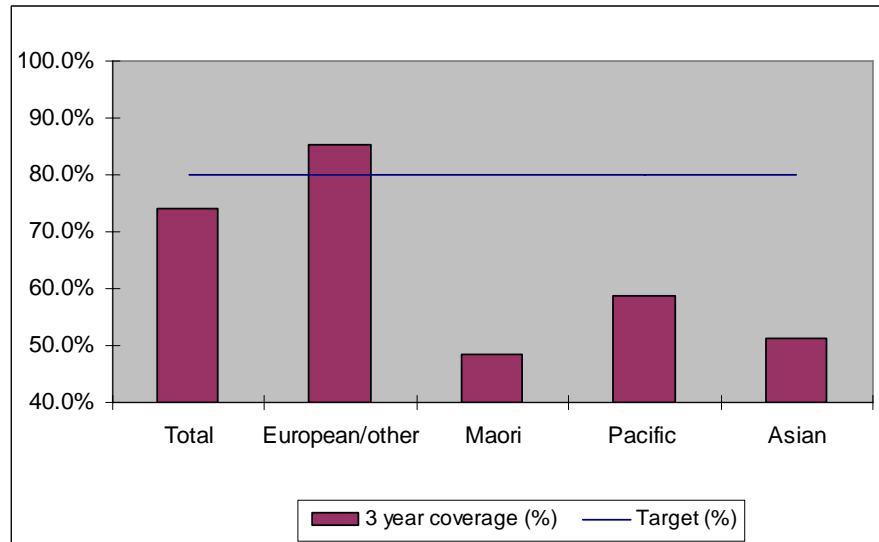


1. NCSP coverage - Waitemata DHB Region - 30 June 2011 quarter

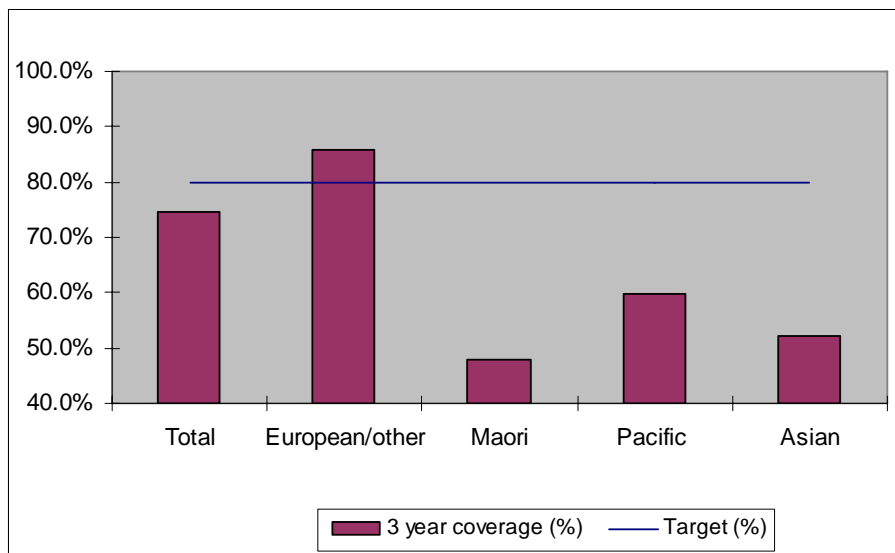
25-69 year old women screened in the three years to 30 June 2011, as a proportion of the hysterectomy adjusted 2006 Census based female population in the Waitemata DHB Region.



	Population	3 year coverage (n)	3 year coverage (%)
Total	144,196	106,703	74.0%
European/other	94,827	81,027	85.4%
Maori	11,741	5,675	48.3%
Pacific	9,194	5,407	58.8%
Asian	28,434	14,594	51.3%

2. NCSP coverage - Waitemata DHB Region - 31 March 2011 quarter

25-69 year old women screened in the three years to 31 March 2011, as a proportion of the hysterectomy adjusted 2006 Census based female population in the Waitemata DHB Region.

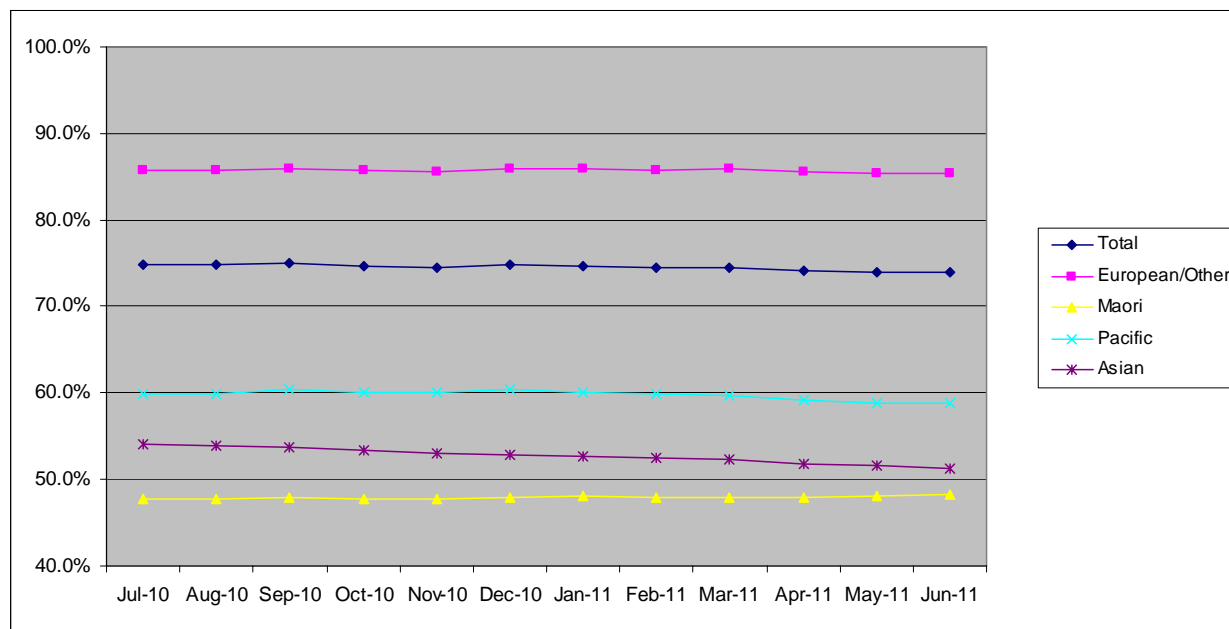


	Population	3 year coverage (n)	3 year coverage (%)
Total	143,605	107,039	74.5%
European/other	94,620	81,255	85.9%
Maori	11,689	5,608	48.0%
Pacific	9,154	5,472	59.8%
Asian	28,142	14,704	52.2%

3. NCSP summary monthly coverage in the year to 30 June 2011

Waitemata DHB

Monthly coverage trends for 25-69 year old women screened in the three years to 30 June 2011, as a proportion of the hysterectomy adjusted 2006 Census based female population.



Target: 75% for all population groups to 31 December 2010 and 80% for all population groups from 1 January 2011

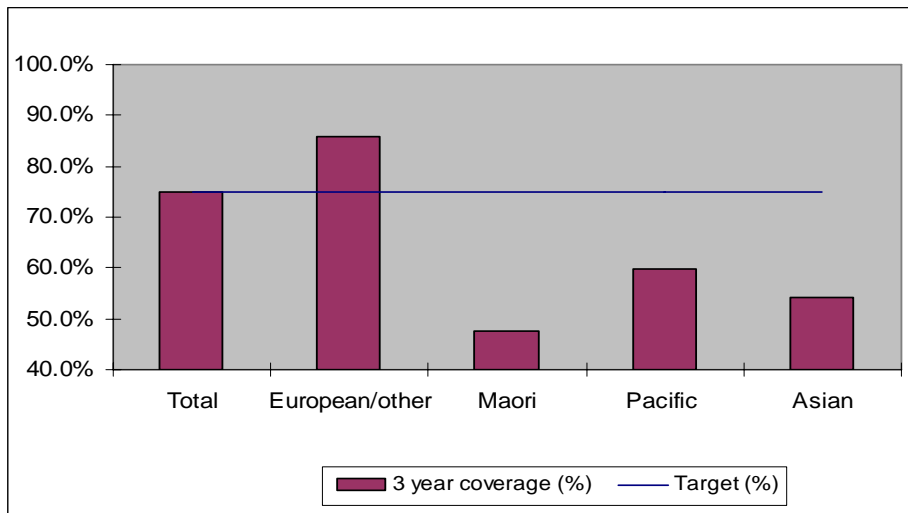
How was your DHB performing as at 30 June 2011?

Rank	DHB	June Quarter Performance	Change from previous quarter
1	Taranaki	82.9%	-0.1%
2	Wairarapa	81.7%	0.1%
3	Capital and Coast	79.3%	-0.3%
4	Nelson Marlborough	78.7%	-0.2%
5	Hawke's Bay	78.4%	-0.4%
6	Otago*	78.3%	-0.5%
7	Bay of Plenty	77.3%	-0.4%
8	Hutt Valley	76.9%	-0.4%
9	Lakes	76.9%	0.0%
10	Southland*	75.3%	-0.3%
11	Northland	75.1%	0.7%
12	Waikato	74.9%	0.1%
13	Whanganui	74.6%	0.6%
14	Tairāwhiti	74.5%	1.0%
15	Mid Central	74.3%	0.2%
16	Waitemata	74.0%	-0.5%
17	Canterbury	73.5%	-0.4%
18	Auckland	73.1%	0.3%
19	South Canterbury	72.9%	-2.2%
20	West Coast	68.5%	-1.0%
21	Counties Manukau	67.3%	-0.5%

* On 1 May 2010 Southland and Otago DHBs merged to create Southern DHB.

4. NCSP coverage - Waitemata DHB Region - 31 December 2010 quarter

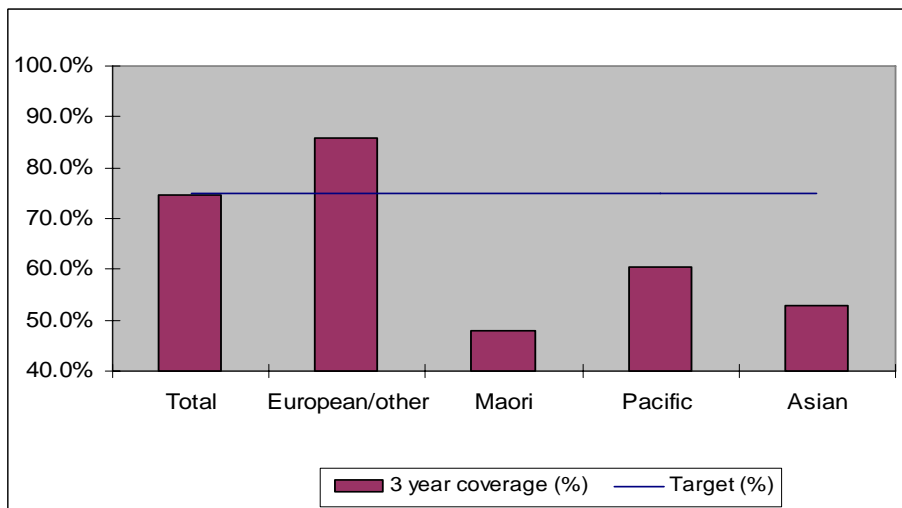
25-69 year old women screened in the three years to 31 December 2010, as a proportion of the hysterectomy adjusted 2006 Census based female population in the Waitemata DHB Region.



	Population	3 year coverage (n)	3 year coverage (%)
Total	143,011	106,930	74.8%
European/other	94,413	81,110	85.9%
Maori	11,634	5,584	48.0%
Pacific	9,114	5,506	60.4%
Asian	27,850	14,730	52.9%

5. NCSP coverage - Waitemata DHB Region - 30 September 2010 quarter

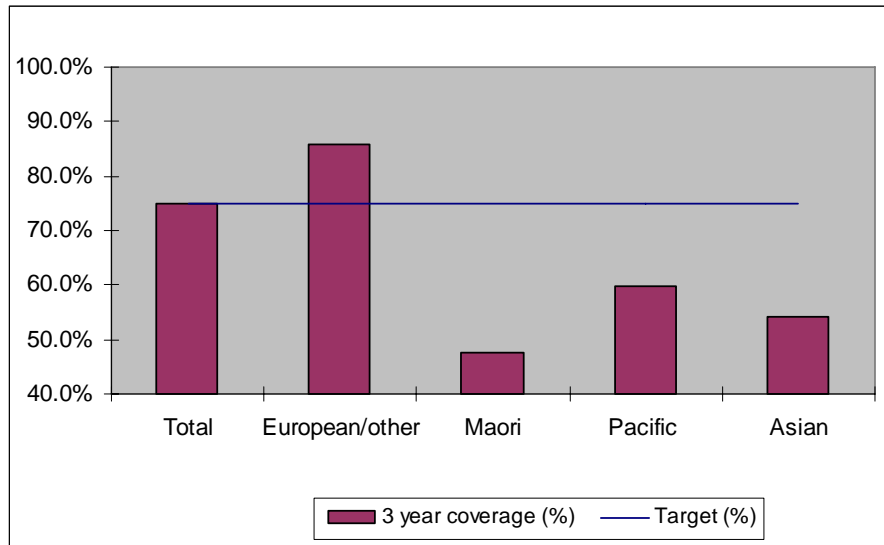
25-69 year old women screened in the three years to 30 September 2010, as a proportion of the hysterectomy adjusted 2006 Census based female population in the Waitemata DHB Region.



	Population	3 year coverage (n)	3 year coverage (%)
Total	142,414	106,786	75.0%
European/other	94,205	80,957	85.9%
Maori	11,578	5,544	47.9%
Pacific	9,073	5,478	60.4%
Asian	27,558	14,807	53.7%

6. NCSP coverage - Waitemata DHB Region - 30 June 2010 quarter

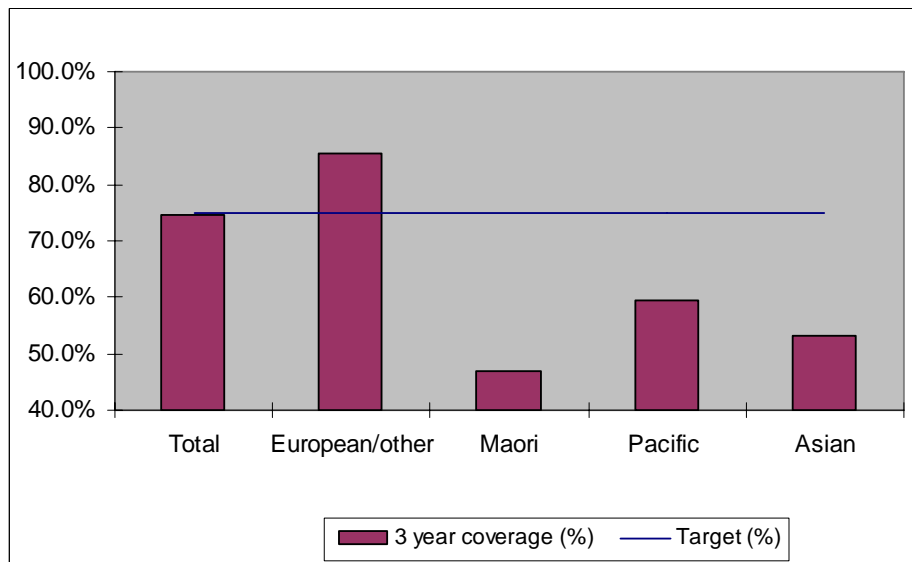
25-69 year old women screened in the three years to 30 June 2010, as a proportion of the hysterectomy adjusted 2006 Census based female population in the Waitemata DHB Region.



	Population	3 year coverage (n)	3 year coverage (%)
Total	141,810	106,175	74.9%
European/other	93,995	80,556	85.7%
Maori	11,522	5,464	47.4%
Pacific	9,031	5,408	59.9%
Asian	27,262	14,747	54.1%

7. NCSP coverage - Waitemata DHB Region - 31 March 2010 quarter

25-69 year old women screened in the three years to 31 March 2010, as a proportion of the hysterectomy adjusted 2006 Census based female population in the Waitemata DHB Region.

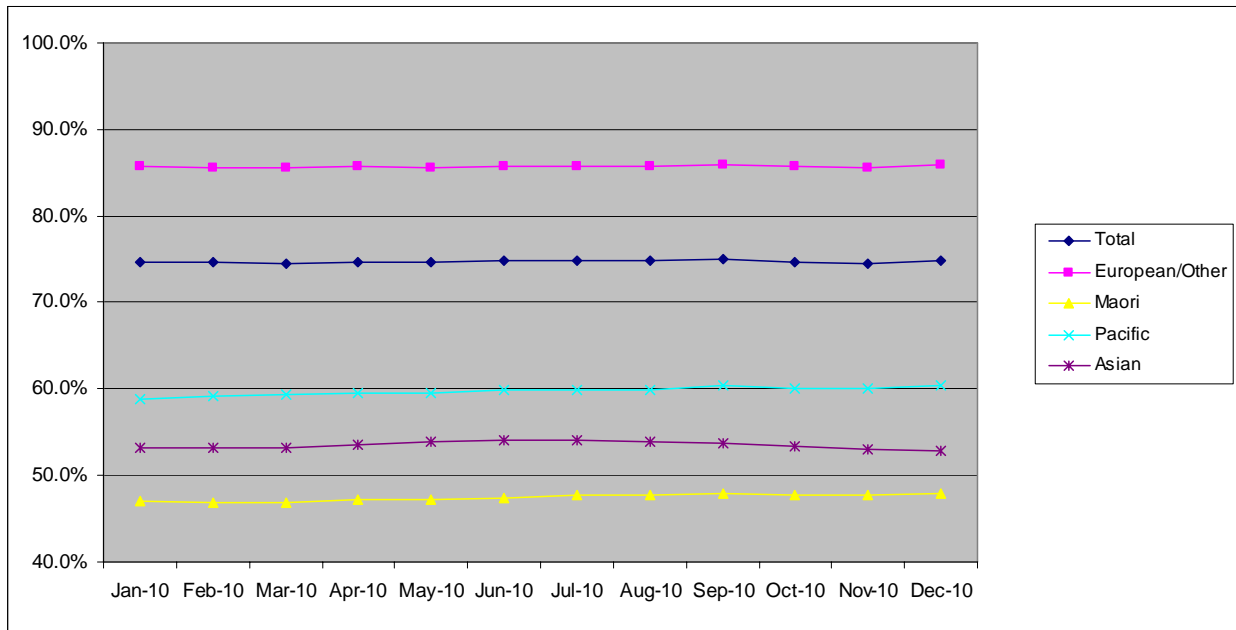


	Population	3 year coverage (n)	3 year coverage (%)
Total	141,097	105,186	74.5%
European/other	93,676	80,104	85.5%
Maori	11,468	5,376	46.9%
Pacific	8,989	5,340	59.4%
Asian	26,964	14,366	53.3%

8. NCSP summary monthly coverage in the year to 31 December 2010

Waitemata DHB

Monthly coverage trends for 25-69 year old women screened in the three years to 2010, as a proportion of the hysterectomy adjusted 2006 Census based female population.



Target: 75% for all population groups

How is your DHB performing as at 31 December 2010?

Rank	DHB	December Quarter Performance	Change from previous quarter
1	Taranaki	83.5%	-0.1%
2	Wairarapa	81.2%	0.5%
3	Nelson Marlborough	79.7%	-0.4%
4	Capital and Coast	79.6%	0.1%
5	Otago*	79.4%	-0.4%
6	Hawke's Bay	78.6%	0.1%
7	Bay of Plenty	78.4%	-0.3%
8	Hutt Valley	77.7%	0.2%
9	South Canterbury	77.1%	-1.2%
10	Lakes	77.0%	0.2%
11	Southland*	76.0%	0.1%
12	Canterbury	75.2%	-0.2%
13	Waikato	74.9%	0.2%
14	Waitemata	74.8%	-0.2%
15	Northland	74.3%	-0.3%
16	Mid Central	73.9%	0.2%
17	Whanganui	73.9%	0.6%
18	Auckland	72.7%	0.2%
19	Tairāwhiti	70.9%	-0.3%
20	West Coast	70.0%	-0.3%
21	Counties Manukau	68.2%	-0.5%

* On 1 May 2010 Southland and Otago DHBs merged to create Southern DHB.

9. Summary Comments

3 yearly coverage to:	30 June 2011	30 June 2010	change
Total	74.0%	74.9%	-0.9%
European/other	85.4%	85.7%	-0.3%
Maori	48.3%	47.4%	0.9%
Pacific	58.8%	59.9%	-1.1%
Asian	51.3%	54.1%	2.8%
Ranking	16 of 21	13 of 21	3