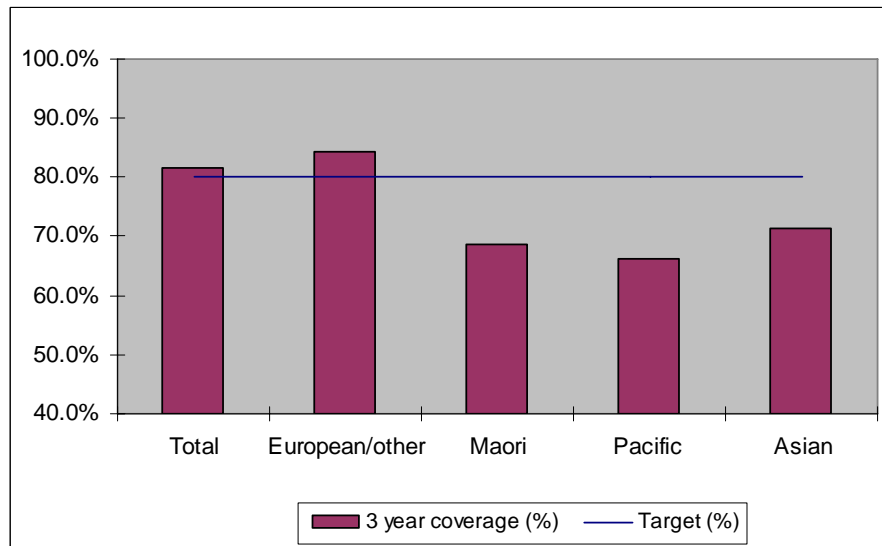


1. NCSP coverage - Wairarapa DHB Region - 30 June 2011 quarter

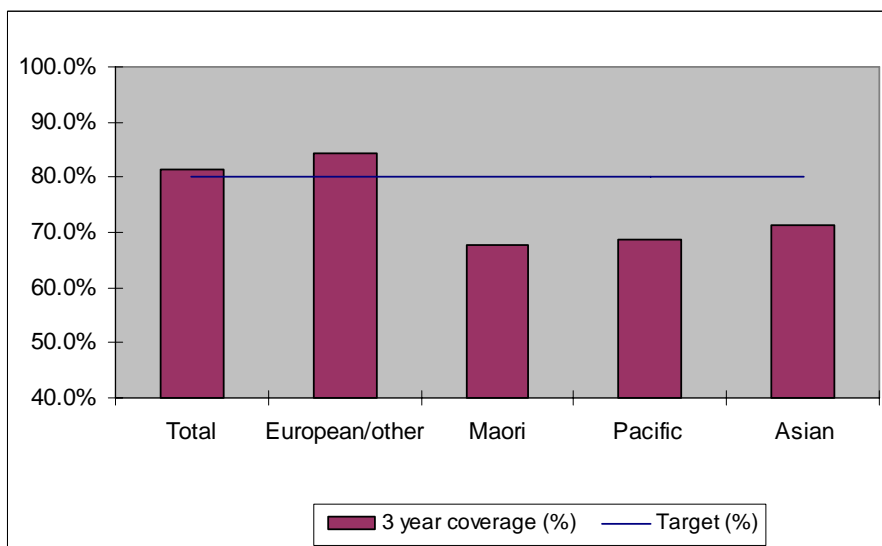
25-69 year old women screened in the three years to 30 June 2011, as a proportion of the hysterectomy adjusted 2006 Census based female population in the Wairarapa DHB Region.



	Population	3 year coverage (n)	3 year coverage (%)
Total	9,917	8,098	81.7%
European/other	8,242	6,946	84.3%
Maori	1,319	906	68.7%
Pacific	160	106	66.3%
Asian	196	140	71.4%

2. NCSP coverage - Wairarapa DHB Region - 31 March 2011 quarter

25-69 year old women screened in the three years to 31 March 2011, as a proportion of the hysterectomy adjusted 2006 Census based female population in the Wairarapa DHB Region.

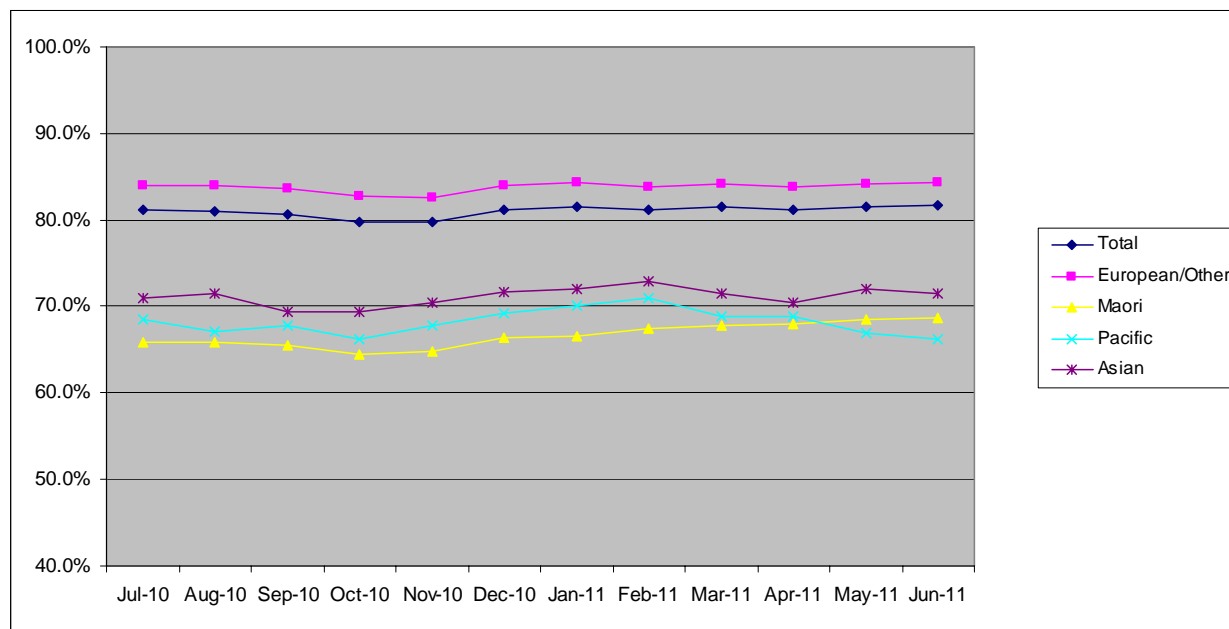


	Population	3 year coverage (n)	3 year coverage (%)
Asian	9,924	8,093	81.5%
Maori	8,256	6,953	84.2%
Other ethnic groups	1,315	892	67.8%
Pacific	157	108	68.8%
Total	196	140	71.4%

3. NCSP summary quarterly coverage to 30 June 2011

Wairarapa DHB

Monthly coverage trends for 25-69 year old women screened in the three years to 30 June 2011, as a proportion of the hysterectomy adjusted 2006 Census based female population.



Target: 75% for all population groups to 31 December 2010 and 80% for all population groups from 1 January 2011.

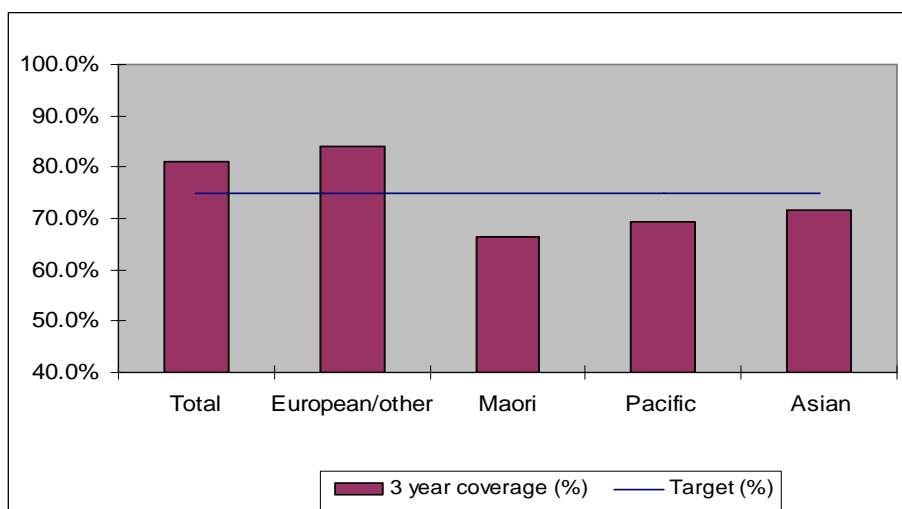
How was your DHB performing as at 30 June 2011

Rank	DHB	June Quarter Performance	Change from previous quarter
1	Taranaki	82.9%	-0.1%
2	Wairarapa	81.7%	0.1%
3	Capital and Coast	79.3%	-0.3%
4	Nelson Marlborough	78.7%	-0.2%
5	Hawke's Bay	78.4%	-0.4%
6	Otago	78.3%	-0.5%
7	Bay of Plenty	77.3%	-0.4%
8	Hutt Valley	76.9%	-0.4%
9	Lakes	76.9%	0.0%
10	Southland	75.3%	-0.3%
11	Northland	75.1%	0.7%
12	Waikato	74.9%	0.1%
13	Whanganui	74.6%	0.6%
14	Tairāwhiti	74.5%	1.0%
15	Mid Central	74.3%	0.2%
16	Waitemata	74.0%	-0.5%
17	Canterbury	73.5%	-0.4%
18	Auckland	73.1%	0.3%
19	South Canterbury	72.9%	-2.2%
20	West Coast	68.5%	-1.0%
21	Counties Manukau	67.3%	-0.5%

* On 1 May 2010 Southland and Otago DHBs merged to create Southern DHB.

4. NCSP coverage - Wairarapa DHB Region - 31 December 2010 quarter

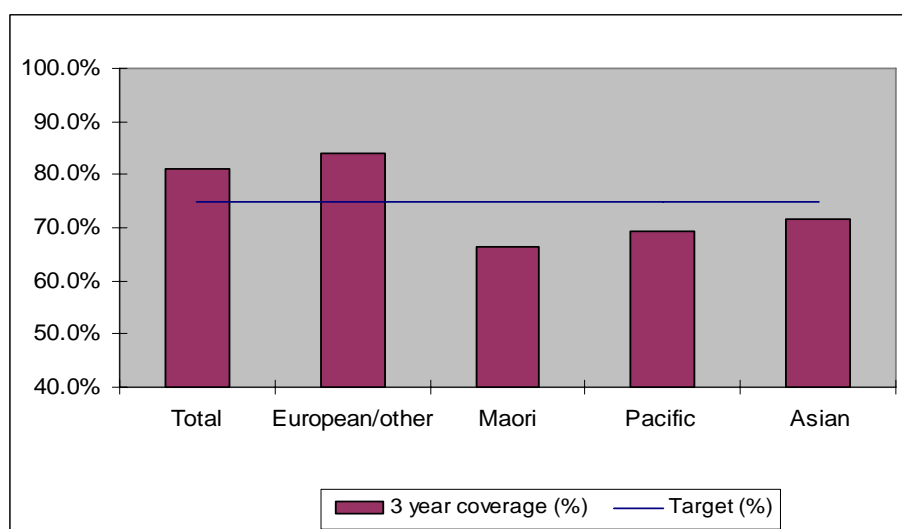
25-69 year old women screened in the three years to 31 December 2010, as a proportion of the hysterectomy adjusted 2006 Census based female population in the Wairarapa DHB Region.



	Population	3 year coverage (n)	3 year coverage (%)
Total	9,937	8,070	81.2%
European/other	8,271	6,949	84.0%
Maori	1,312	871	66.4%
Pacific	156	108	69.2%
Asian	198	142	71.7%

5. NCSP coverage - Wairarapa DHB Region - 30 September 2010 quarter

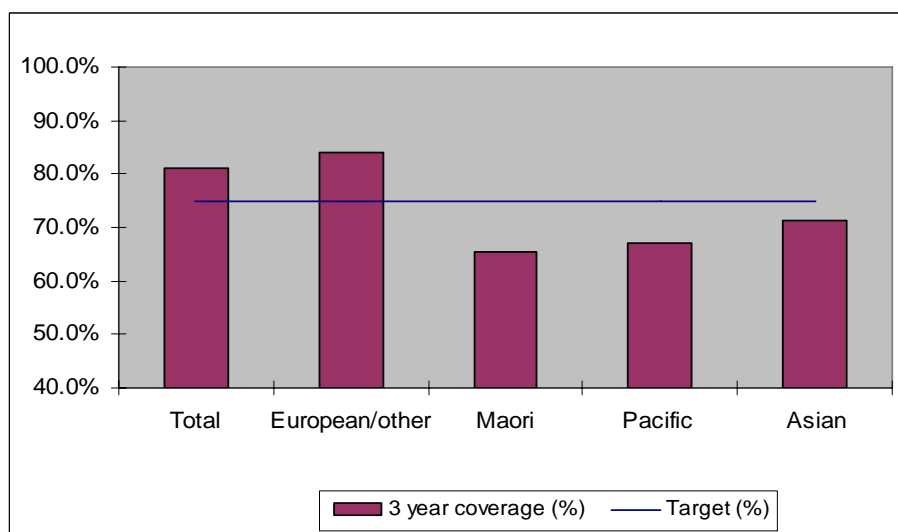
25-69 year old women screened in the three years to 30 September 2010, as a proportion of the hysterectomy adjusted 2006 Census based female population in the Wairarapa DHB Region.



	Population	3 year coverage (n)	3 year coverage (%)
Total	9,936	8,018	80.7%
European/other	8,285	6,925	83.6%
Maori	1,306	856	65.5%
Pacific	149	101	67.8%
Asian	196	136	69.4%

6. NCSP coverage - Wairarapa DHB Region - 30 June 2010 quarter

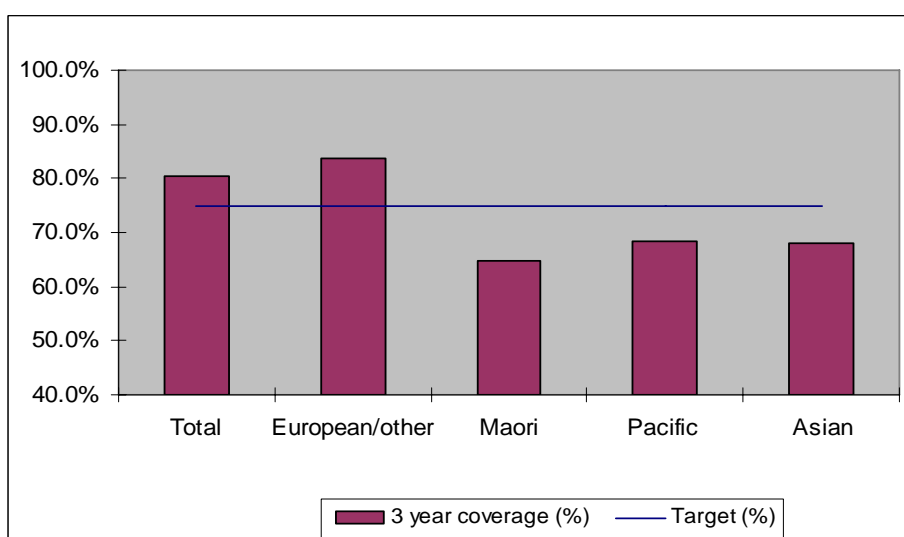
25-69 year old women screened in the three years to 30 June 2010, as a proportion of the hysterectomy adjusted 2006 Census based female population in the Wairarapa DHB Region.



	Population	3 year coverage (n)	3 year coverage (%)
Total	9,939	8,045	80.9%
European/other	8,297	6,958	83.9%
Maori	1,300	849	65.3%
Pacific	146	98	67.1%
Asian	196	140	71.4%

7. NCSP coverage - Wairarapa DHB Region - 31 March 2010 quarter

25-69 year old women screened in the three years to 31 March 2010, as a proportion of the hysterectomy adjusted 2006 Census based female population in the Wairarapa DHB Region.

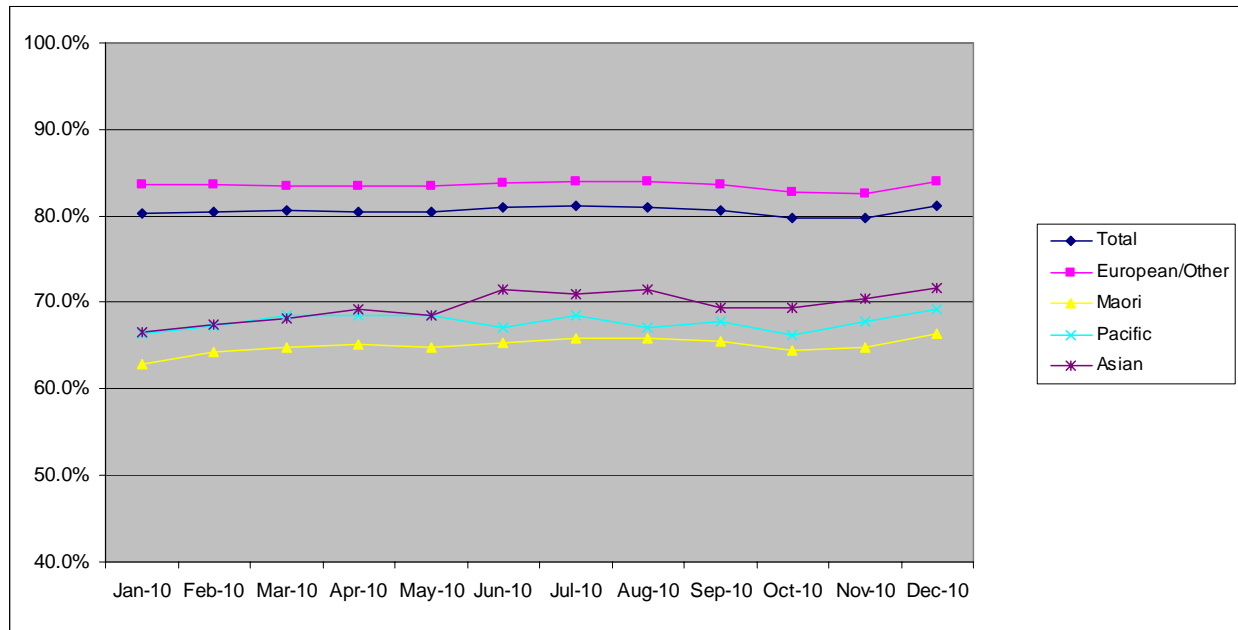


	Population	3 year coverage (n)	3 year coverage (%)
Asian	9,961	8,025	80.6%
Maori	8,315	6,946	83.5%
Other ethnic groups	1,302	844	64.8%
Pacific	146	100	68.5%
Total	198	135	68.2%

8. NCSP summary quarterly coverage to 31 December 2010

Wairarapa DHB

Monthly coverage trends for 25-69 year old women screened in the three years to 2010, as a proportion of the hysterectomy adjusted 2006 Census based female population.



Target: 75% for all population groups

How is your DHB performing as at 31 December 2010?

Rank	DHB	December Quarter Performance	Change from previous quarter
1	Taranaki	83.5%	-0.1%
2	Wairarapa	81.2%	0.5%
3	Nelson Marlborough	79.7%	-0.4%
4	Capital and Coast	79.6%	0.1%
5	Otago	79.4%	-0.4%
6	Hawke's Bay	78.6%	0.1%
7	Bay of Plenty	78.4%	-0.3%
8	Hutt Valley	77.7%	0.2%
9	South Canterbury	77.1%	-1.2%
10	Lakes	77.0%	0.2%
11	Southland	76.0%	0.1%
12	Canterbury	75.2%	-0.2%
13	Waikato	74.9%	0.2%
14	Waitemata	74.8%	-0.2%
15	Northland	74.3%	-0.3%
16	Mid Central	73.9%	0.2%
17	Whanganui	73.9%	0.6%
18	Auckland	72.7%	0.2%
19	Tairāwhiti	70.9%	-0.3%
20	West Coast	70.0%	-0.3%
21	Counties Manukau	68.2%	-0.5%

* On 1 May 2010 Southland and Otago DHBs merged to create Southern DHB.

9. Summary Comments

3 yearly coverage to:	30 June 2011	30 June 2010	change
Total	81.7%	80.9%	0.8%
European/other	84.3%	83.9%	0.4%
Maori	68.7%	65.3%	3.4%
Pacific	66.3%	67.1%	-0.8%
Asian	71.4%	71.4%	0.0%
Ranking	2 of 21	2 of 21	0