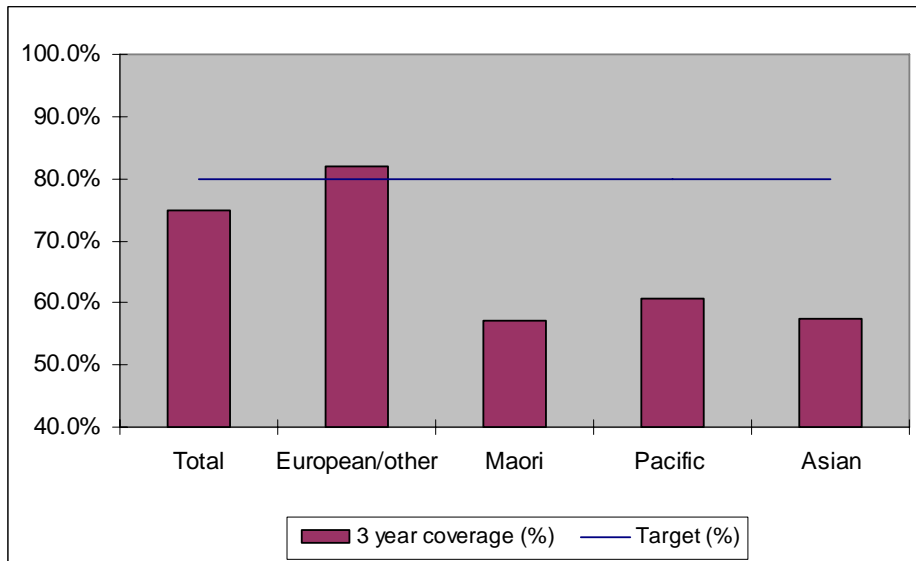


## 1. NCSP coverage - Waikato DHB Region - 30 June 2011 quarter

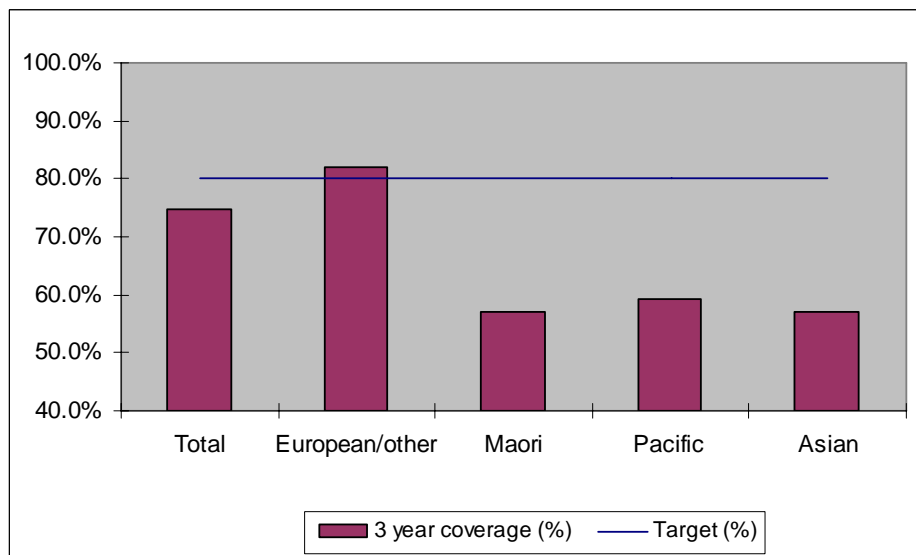
25-69 year old women screened in the three years to 30 June 2011, as a proportion of the hysterectomy adjusted 2006 Census based female population in the Waikato DHB Region.



	Population	3 year coverage (n)	3 year coverage (%)
<b>Total</b>	90,866	68,094	74.9%
<b>European/other</b>	64,810	53,126	82.0%
<b>Maori</b>	17,329	9,885	57.0%
<b>Pacific</b>	2,116	1,283	60.6%
<b>Asian</b>	6,611	3,800	57.5%

## 2. NCSP coverage - Waikato DHB Region - 31 March 2011 quarter

25-69 year old women screened in the three years to 31 March 2011, as a proportion of the hysterectomy adjusted 2006 Census based female population in the Waikato DHB Region.

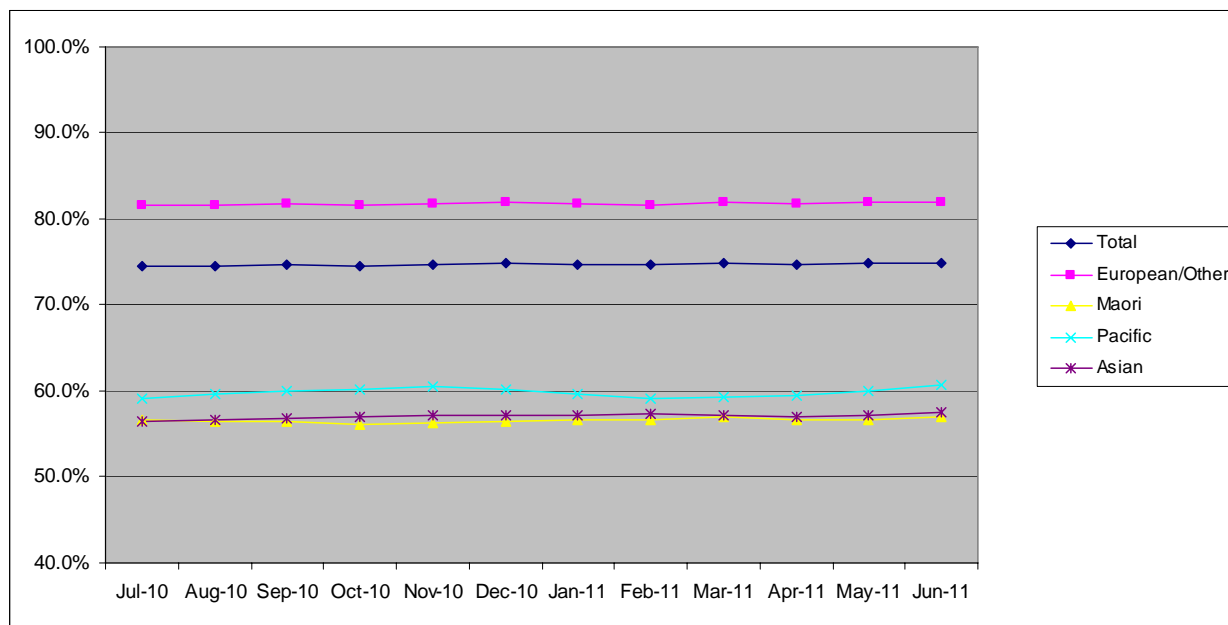


	Population	3 year coverage (n)	3 year coverage (%)
<b>Total</b>	90,708	67,887	74.8%
<b>European/other</b>	64,783	53,068	81.9%
<b>Maori</b>	17,267	9,828	56.9%
<b>Pacific</b>	2,104	1,249	59.4%
<b>Asian</b>	6,554	3,742	57.1%

### 3. NCSP summary quarterly coverage to 30 June 2011

#### Waikato DHB

Monthly coverage trends for 25-69 year old women screened in the three years to 30 June 2011, as a proportion of the hysterectomy adjusted 2006 Census based female population.



Target: 75% for all population groups to 31 December 2010 and 80% for all population groups from 1 January 2011.

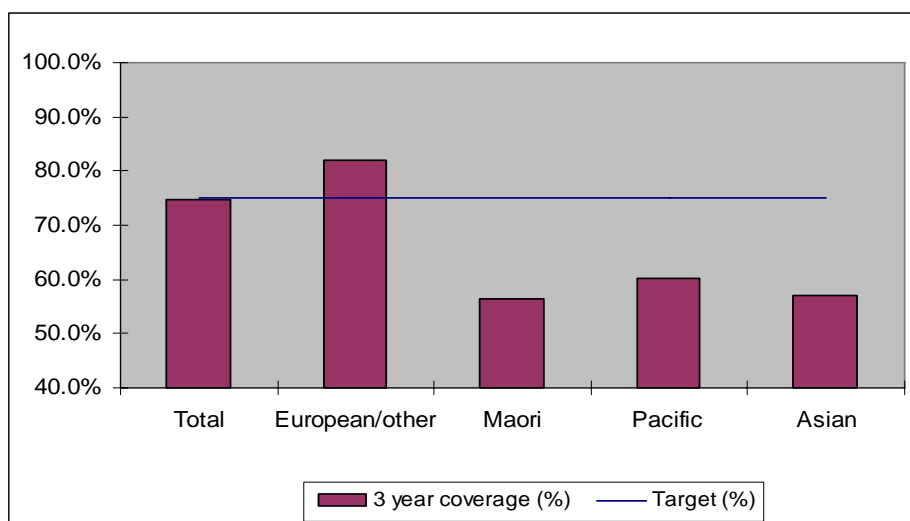
#### How is your DHB performing as at 30 June 2011?

Rank	DHB	June Quarter Performance	Change from previous quarter
1	Taranaki	82.9%	-0.1%
2	Wairarapa	81.7%	0.1%
3	Capital and Coast	79.3%	-0.3%
4	Nelson Marlborough	78.7%	-0.2%
5	Hawke's Bay	78.4%	-0.4%
6	Otago*	78.3%	-0.5%
7	Bay of Plenty	77.3%	-0.4%
8	Hutt Valley	76.9%	-0.4%
9	Lakes	76.9%	0.0%
10	Southland*	75.3%	-0.3%
11	Northland	75.1%	0.7%
<b>12</b>	<b>Waikato</b>	<b>74.9%</b>	<b>0.1%</b>
13	Whanganui	74.6%	0.6%
14	Tairāwhiti	74.5%	1.0%
15	Mid Central	74.3%	0.2%
16	Waitemata	74.0%	-0.5%
17	Canterbury	73.5%	-0.4%
18	Auckland	73.1%	0.2%
19	South Canterbury	72.9%	-2.2%
20	West Coast	68.5%	-1.0%
21	Counties Manukau	67.3%	-0.5%

\* On 1 May 2010 Southland and Otago DHBs merged to create Southern DHB.

#### 4. NCSP coverage - Waikato DHB Region - 31 December 2010 quarter

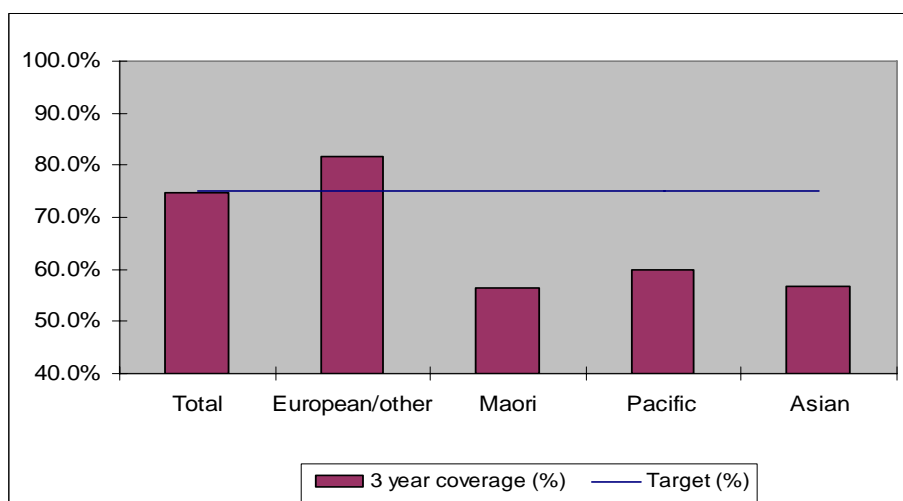
25-69 year old women screened in the three years to 31 December 2010, as a proportion of the hysterectomy adjusted 2006 Census based female population in the Waikato DHB Region.



	Population	3 year coverage (n)	3 year coverage (%)
<b>Total</b>	90,552	67,782	74.9%
<b>European/other</b>	64,756	53,075	82.0%
<b>Maori</b>	17,205	9,729	56.5%
<b>Pacific</b>	2,093	1,261	60.2%
<b>Asian</b>	6,498	3,717	57.2%

#### 5. NCSP coverage - Waikato DHB Region - 30 September 2010 quarter

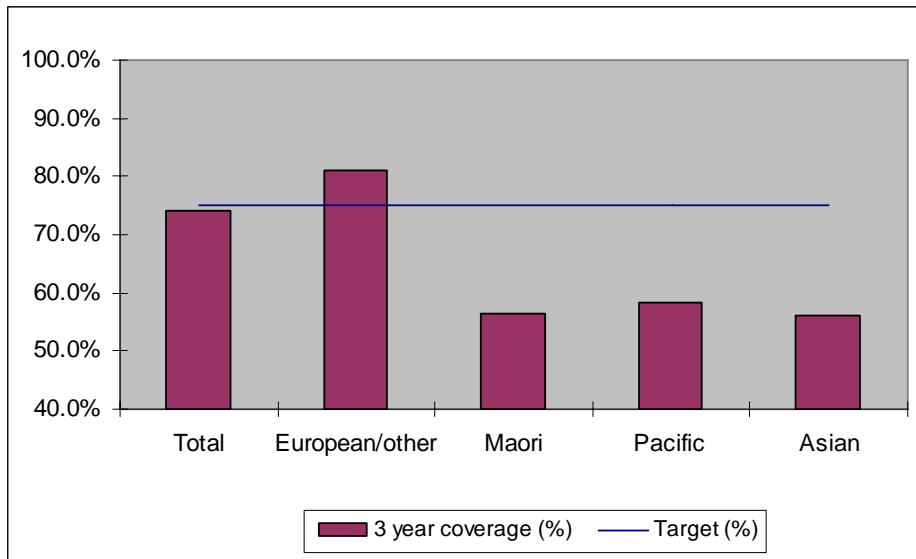
25-69 year old women screened in the three years to 30 September 2010, as a proportion of the hysterectomy adjusted 2006 Census based female population in the Waikato DHB Region.



	Population	3 year coverage (n)	3 year coverage (%)
<b>Total</b>	90,387	67,511	74.7%
<b>European/other</b>	64,726	52,922	81.8%
<b>Maori</b>	17,140	9,676	56.5%
<b>Pacific</b>	2,081	1,249	60.0%
<b>Asian</b>	6,440	3,664	56.9%

## 6. NCSP coverage - Waikato DHB Region - 30 June 2010 quarter

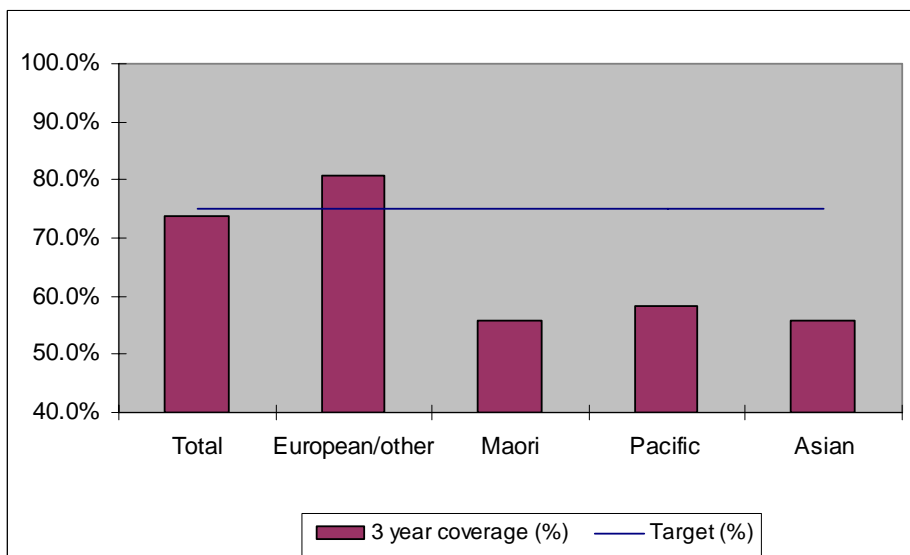
25-69 year old women screened in the three years to 30 June 2010, as a proportion of the hysterectomy adjusted 2006 Census based female population in the Waikato DHB Region.



	Population	3 year coverage (n)	3 year coverage (%)
<b>Total</b>	90,223	66,910	74.2%
<b>European/other</b>	64,697	52,480	81.1%
<b>Maori</b>	17,077	9,639	56.4%
<b>Pacific</b>	2,067	1,203	58.2%
<b>Asian</b>	6,382	3,588	56.2%

## 7. NCSP coverage - Waikato DHB Region - 31 March 2010 quarter

25-69 year old women screened in the three years to 31 March 2010, as a proportion of the hysterectomy adjusted 2006 Census based female population in the Waikato DHB Region.

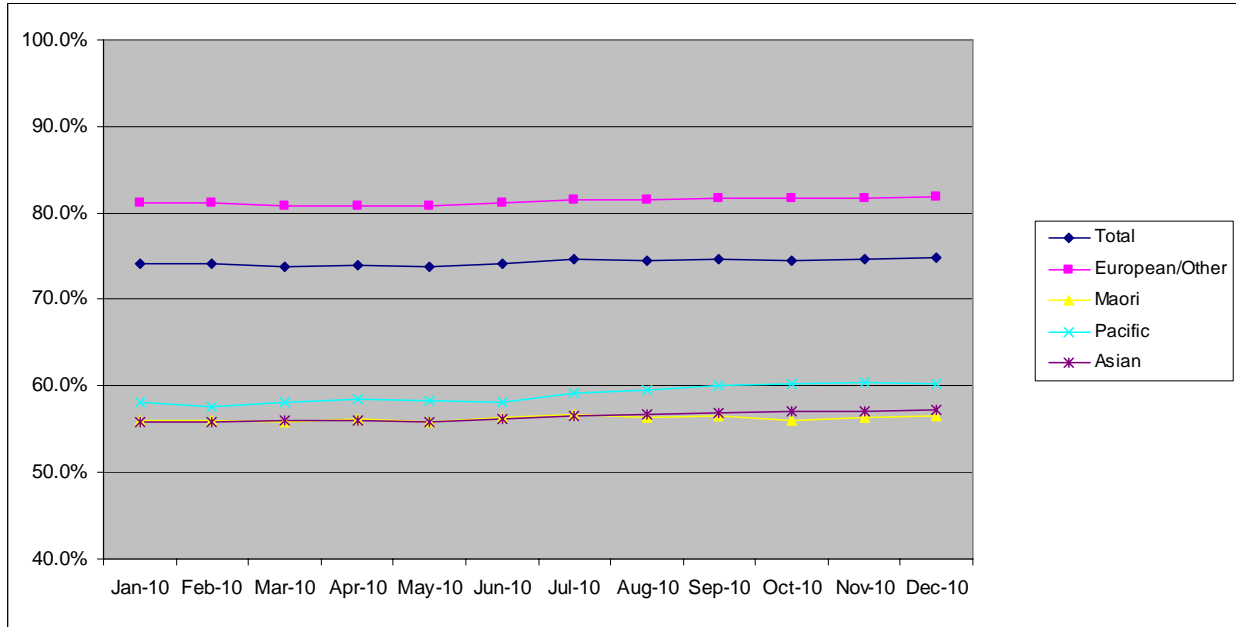


	Population	3 year coverage (n)	3 year coverage (%)
<b>Asian</b>	89,997	66,458	73.8%
<b>Maori</b>	64,619	52,223	80.8%
<b>Other ethnic groups</b>	17,016	9,512	55.9%
<b>Pacific</b>	2,056	1,196	58.2%
<b>Total</b>	6,306	3,527	55.9%

## 8. NCSP summary quarterly coverage to 31 December 2010

### Waikato DHB

Monthly coverage trends for 25-69 year old women screened in the three years to 2010, as a proportion of the hysterectomy adjusted 2006 Census based female population.



Target: 75% for all population groups

### How is your DHB performing as at 31 December 2010?

Rank	DHB	December Quarter Performance	Change from previous quarter
1	Taranaki	83.5%	-0.1%
2	Wairarapa	81.2%	0.5%
3	Nelson Marlborough	79.7%	-0.4%
4	Capital and Coast	79.6%	0.1%
5	Otago*	79.4%	-0.4%
6	Hawke's Bay	78.6%	0.1%
7	Bay of Plenty	78.4%	-0.3%
8	Hutt Valley	77.7%	0.2%
9	South Canterbury	77.1%	-1.2%
10	Lakes	77.0%	0.2%
11	Southland*	76.0%	0.1%
12	Canterbury	75.2%	-0.2%
<b>13</b>	<b>Waikato</b>	<b>74.9%</b>	<b>0.2%</b>
14	Waitemata	74.8%	-0.2%
15	Northland	74.3%	-0.3%
16	Mid Central	73.9%	0.2%
17	Whanganui	73.9%	0.6%
18	Auckland	72.7%	0.3%
19	Tairāwhiti	70.9%	-0.3%
20	West Coast	70.0%	-0.3%
21	Counties Manukau	68.2%	-0.5%

\* On 1 May 2010 Southland and Otago DHBs merged to create Southern DHB.

## 9. Summary Comments

<b>3 yearly coverage to:</b>	<b>30 June 2011</b>	<b>30 June 2010</b>	<b>change</b>
<b>Total</b>	74.9%	74.2%	0.7%
<b>European/other</b>	82.0%	81.1%	0.9%
<b>Maori</b>	57.0%	56.4%	0.6%
<b>Pacific</b>	60.6%	58.2%	2.4%
<b>Asian</b>	57.5%	56.2%	1.3%
<b>Ranking</b>	12 of 21	15 of 21	3