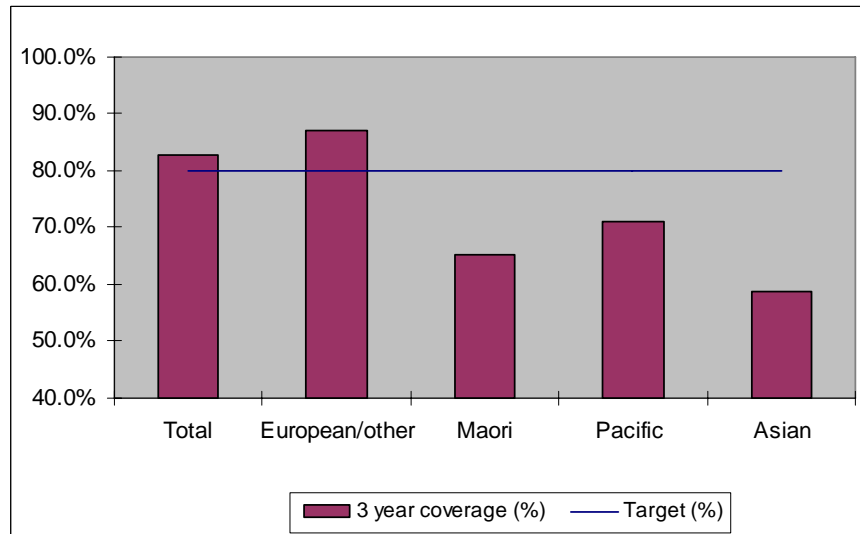


1. NCSP coverage - Taranaki DHB Region - 30 June 2011 quarter

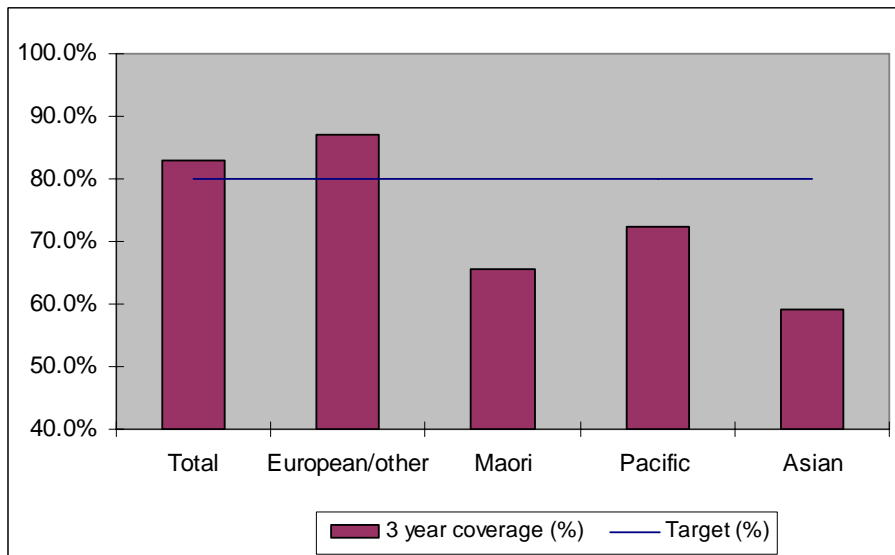
25-69 year old women screened in the three years to 30 June 2011, as a proportion of the hysterectomy adjusted 2006 Census based female population in the Taranaki DHB Region.



	Population	3 year coverage (n)	3 year coverage (%)
Total	26,979	22,358	82.9%
European/other	22,087	19,209	87.0%
Maori	3,791	2,474	65.3%
Pacific	225	160	71.1%
Asian	876	515	58.8%

2. NCSP coverage - Taranaki DHB Region - 31 March 2011 quarter

25-69 year old women screened in the three years to 31 March 2011, as a proportion of the hysterectomy adjusted 2006 Census based female population in the Taranaki DHB Region.

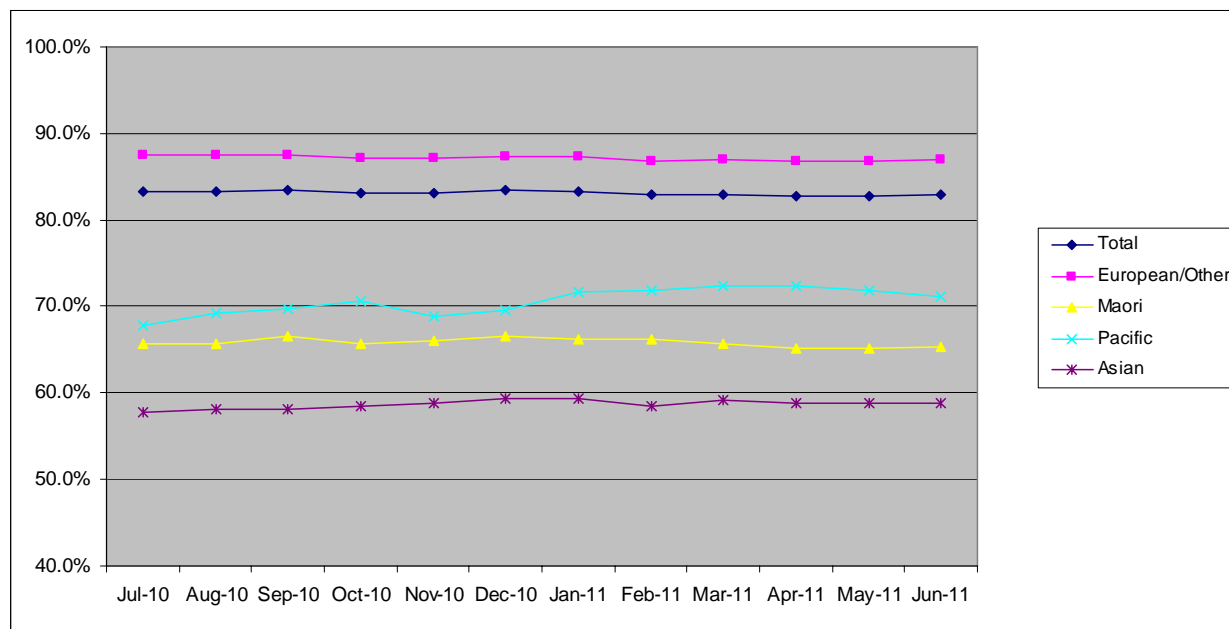


	Population	3 year coverage (n)	3 year coverage (%)
Total	26,987	22,394	83.0%
European/other	22,113	19,237	87.0%
Maori	3,779	2,480	65.6%
Pacific	224	162	72.3%
Asian	871	515	59.1%

3. NCSP summary monthly coverage in the year to 30 June 2011

Taranaki DHB

Monthly coverage trends for 25-69 year old women screened in the three years to 2010, as a proportion of the hysterectomy adjusted 2006 Census based female population.



Target: 75% for all population groups to 31 December 2011 and 80% for all population groups from 1 January 2011.

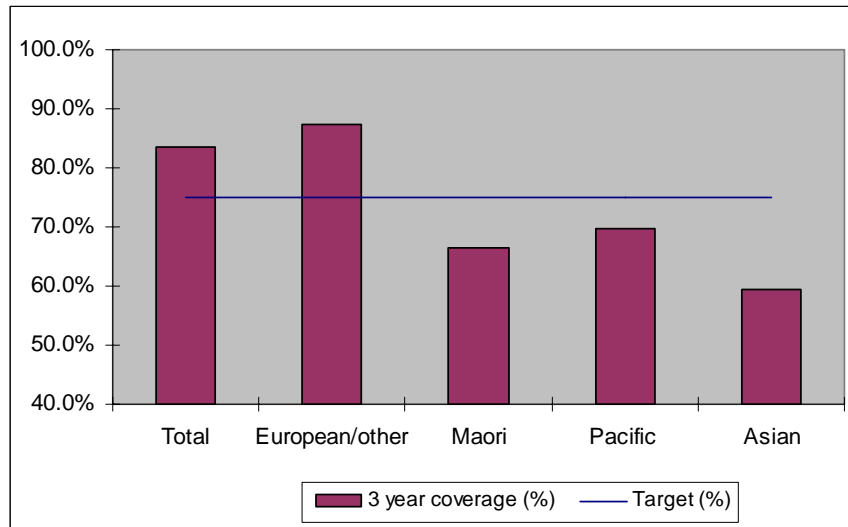
How was your DHB performing as at 30 June 2011?

Rank	DHB	June Quarter Performance	Change from previous quarter
1	Taranaki	82.9%	-0.1%
2	Wairarapa	81.7%	0.1%
3	Capital and Coast	79.3%	-0.3%
4	Nelson Marlborough	78.7%	-0.2%
5	Hawke's Bay	78.4%	-0.4%
6	Otago*	78.3%	-0.5%
7	Bay of Plenty	77.3%	-0.4%
8	Hutt Valley	76.9%	-0.4%
9	Lakes	76.9%	0.0%
10	Southland*	75.3%	-0.3%
11	Northland	75.1%	0.7%
12	Waikato	74.9%	0.1%
13	Whanganui	74.6%	0.6%
14	Tairāwhiti	74.5%	1.0%
15	Mid Central	74.3%	0.2%
16	Waitemata	74.0%	-0.5%
17	Canterbury	73.5%	-0.4%
18	Auckland	73.1%	0.3%
19	South Canterbury	72.9%	-2.2%
20	West Coast	68.5%	-1.0%
21	Counties Manukau	67.3%	-0.5%

* On 1 May 2010 Southland and Otago DHBs merged to create Southern DHB.

4. NCSP coverage - Taranaki DHB Region - 31 December 2010 quarter

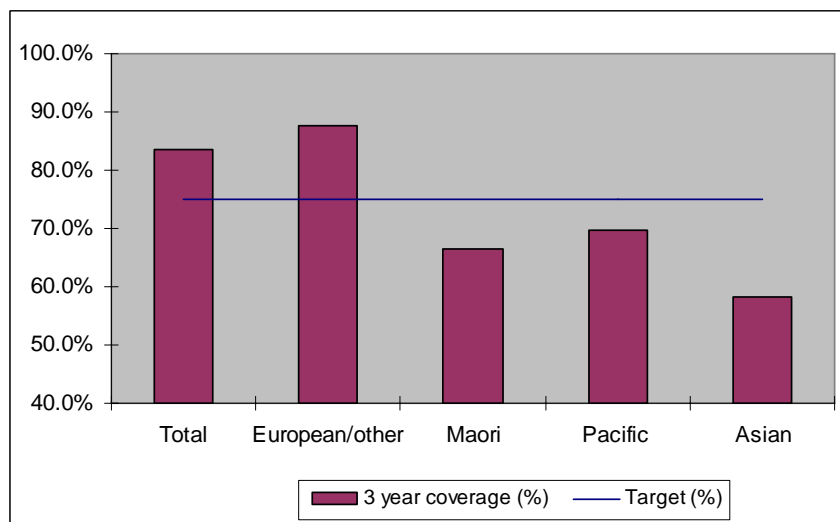
25-69 year old women screened in the three years to 31 December 2010, as a proportion of the hysterectomy adjusted 2006 Census based female population in the Taranaki DHB Region.



	Population	3 year coverage (n)	3 year coverage (%)
Total	26,990	22,525	83.5%
European/other	22,140	19,353	87.4%
Maori	3,765	2,505	66.5%
Pacific	224	156	69.6%
Asian	861	511	59.3%

5. NCSP coverage - Taranaki DHB Region - 30 September 2010 quarter

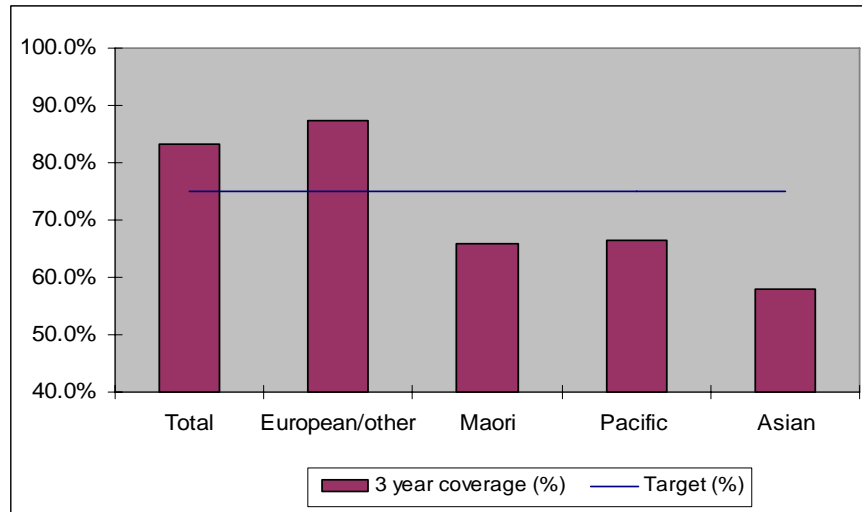
25-69 year old women screened in the three years to 30 September 2010, as a proportion of the hysterectomy adjusted 2006 Census based female population in the Taranaki DHB Region.



	Population	3 year coverage (n)	3 year coverage (%)
Total	26,991	22,545	83.5%
European/other	22,163	19,398	87.5%
Maori	3,750	2,494	66.5%
Pacific	222	155	69.8%
Asian	856	498	58.2%

6. NCSP coverage - Taranaki DHB Region - 30 June 2010 quarter

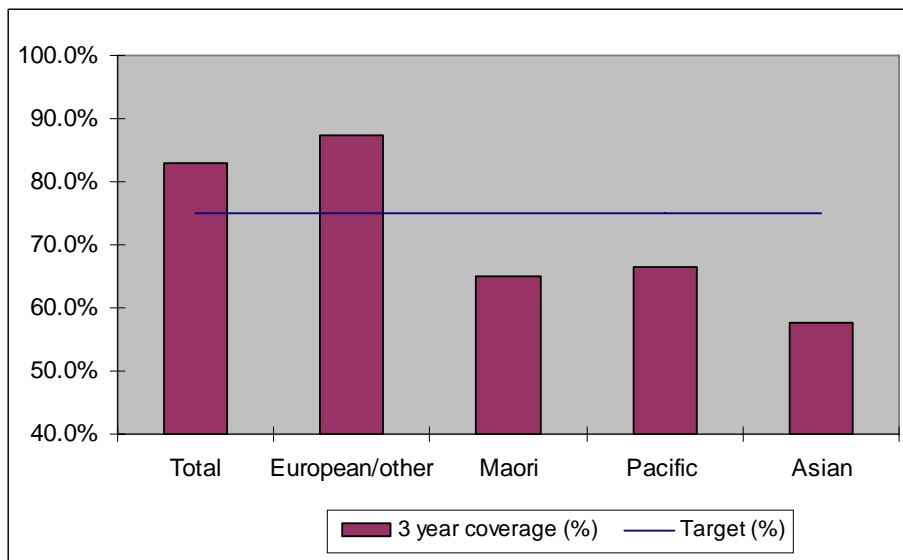
25-69 year old women screened in the three years to 30 June 2010, as a proportion of the hysterectomy adjusted 2006 Census based female population in the Taranaki DHB Region.



	Population	3 year coverage (n)	3 year coverage (%)
Total	26,990	22,492	83.3%
European/other	22,188	19,397	87.4%
Maori	3,736	2,460	65.8%
Pacific	220	146	66.4%
Asian	846	489	57.8%

7. NCSP coverage - Taranaki DHB Region - 31 March 2010 quarter

25-69 year old women screened in the three years to 31 March 2010, as a proportion of the hysterectomy adjusted 2006 Census based female population in the Taranaki DHB Region.

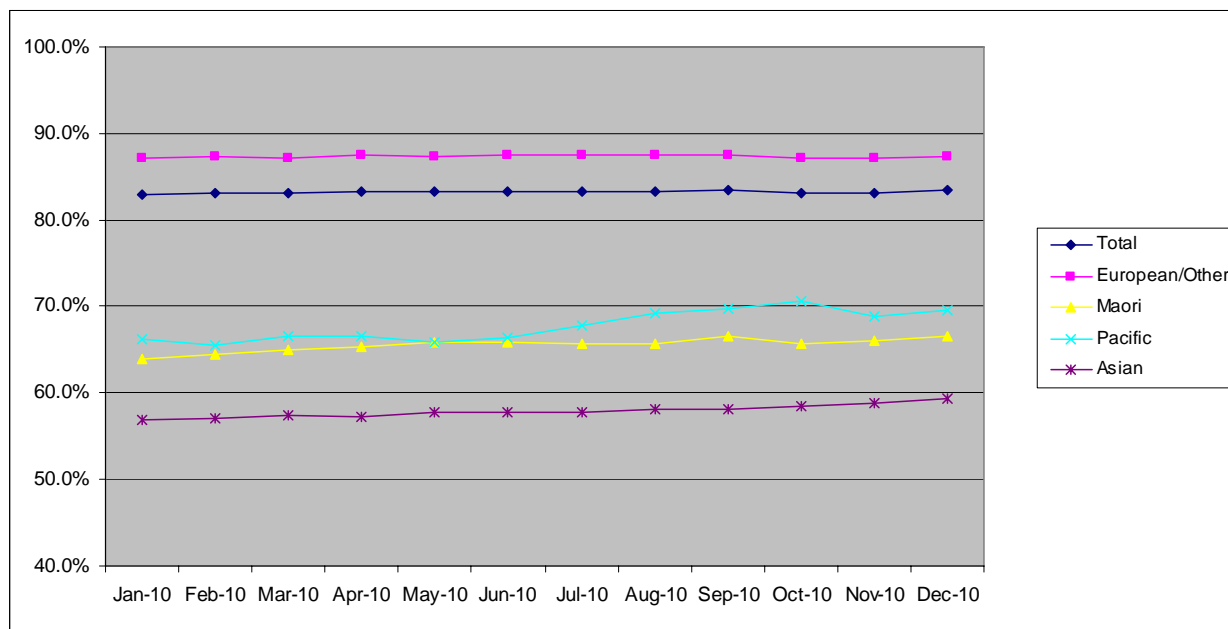


	Population	3 year coverage (n)	3 year coverage (%)
Total	26,988	22,423	83.1%
European/other	22,209	19,375	87.2%
Maori	3,728	2,424	65.0%
Pacific	218	145	66.5%
Asian	833	479	57.5%

8. NCSP summary monthly coverage in the year to 31 December 2010

Taranaki DHB

Monthly coverage trends for 25-69 year old women screened in the three years to 2010, as a proportion of the hysterectomy adjusted 2006 Census based female population.



Target: 75% for all population groups

How is your DHB performing as at 31 December 2010?

Rank	DHB	December Quarter Performance	Change from previous quarter
1	Taranaki	83.5%	0.0%
2	Wairarapa	81.2%	0.5%
3	Nelson Marlborough	79.7%	-0.4%
4	Capital and Coast	79.6%	0.1%
5	Otago*	79.4%	-0.4%
6	Hawke's Bay	78.6%	0.1%
7	Bay of Plenty	78.4%	-0.3%
8	Hutt Valley	77.7%	0.2%
9	South Canterbury	77.1%	-1.2%
10	Lakes	77.0%	0.2%
11	Southland*	76.0%	0.1%
12	Canterbury	75.2%	-0.2%
13	Waikato	74.9%	0.2%
14	Waitemata	74.8%	-0.2%
15	Northland	74.3%	-0.3%
16	Mid Central	73.9%	0.2%
17	Whanganui	73.9%	0.6%
18	Auckland	72.7%	0.2%
19	Tairāwhiti	70.9%	-0.3%
20	West Coast	70.0%	-0.3%
21	Counties Manukau	68.2%	-0.5%

* On 1 May 2010 Southland and Otago DHBs merged to create Southern DHB.

9. Summary Comments

3 yearly coverage to:	30 June 2011	30 June 2010	change
Total	82.9%	83.3%	-0.4%
European/other	87.0%	87.4%	-0.4%
Maori	65.3%	65.8%	-0.5%
Pacific	71.1%	66.4%	4.7%
Asian	58.8%	57.8%	1.0%
Ranking	1 of 21	1 of 21	0