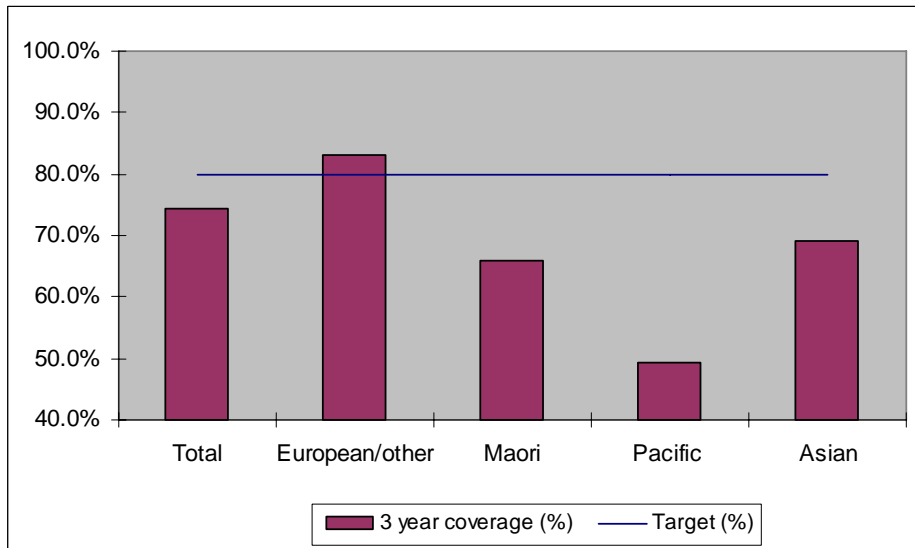


1. NCSP coverage - Tairawhiti DHB Region - 30 June 2011 quarter

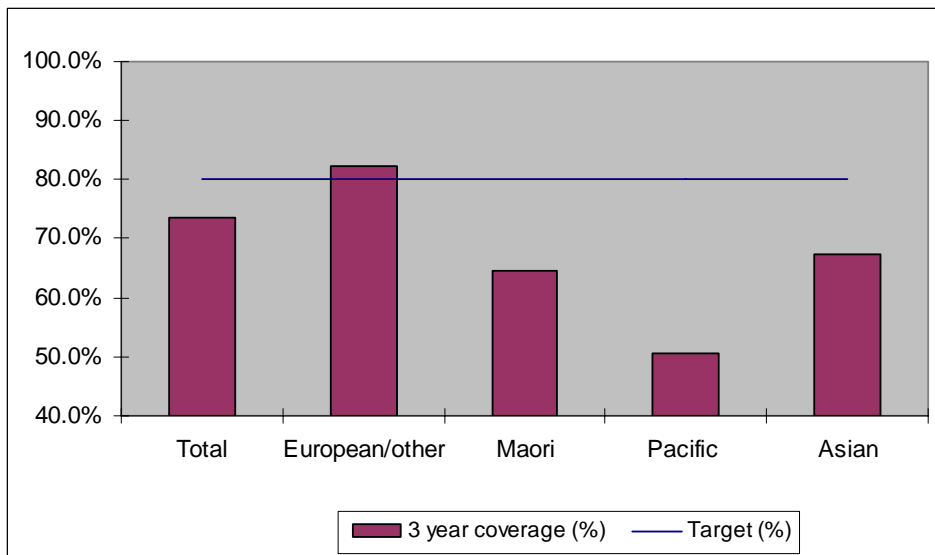
25-69 year old women screened in the three years to 30 June 2011, as a proportion of the hysterectomy adjusted 2006 Census based female population in the Tairawhiti DHB Region.



	Population	3 year coverage (n)	3 year coverage (%)
Total	11,573	8,619	74.5%
European/other	5,946	4,943	83.1%
Maori	5,166	3,401	65.8%
Pacific	221	109	49.3%
Asian	240	166	69.2%

2. NCSP coverage - Tairawhiti DHB Region - 31 March 2011 quarter

25-69 year old women screened in the three years to 31 March 2011, as a proportion of the hysterectomy adjusted 2006 Census based female population in the Tairawhiti DHB Region.

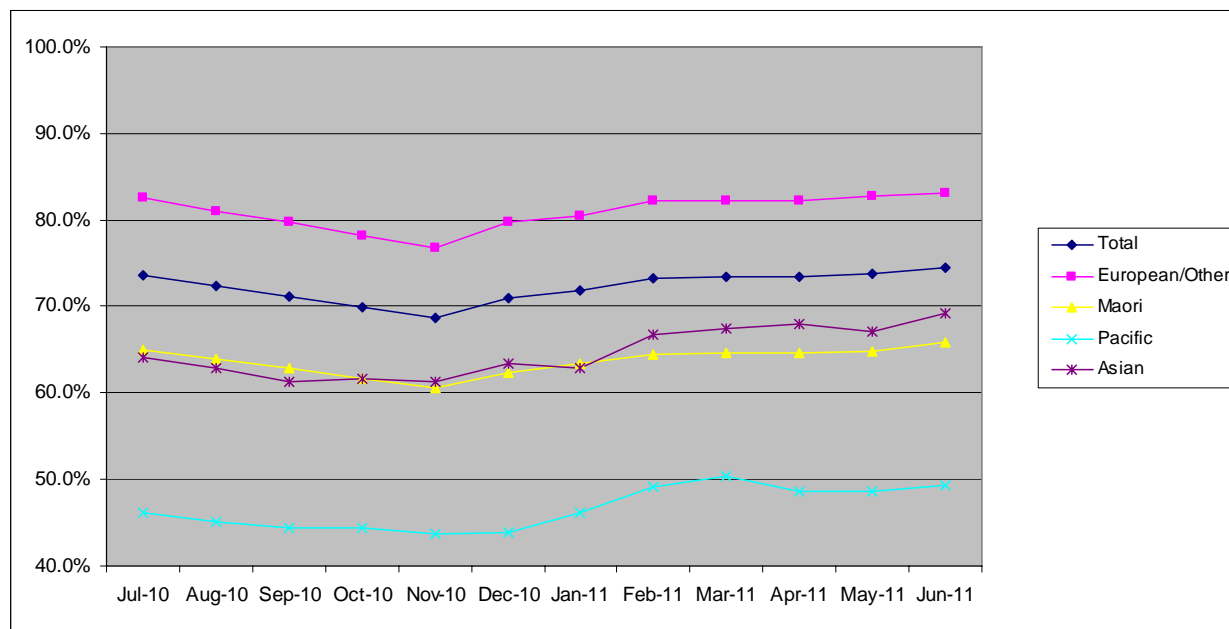


	Population	3 year coverage (n)	3 year coverage (%)
Total	11,564	8,499	73.5%
European/other	5,947	4,892	82.3%
Maori	5,159	3,335	64.6%
Pacific	218	110	50.5%
Asian	240	162	67.5%

3. NCSP summary monthly coverage in the year to 30 June 2011

Tairawhiti DHB

Monthly coverage trends for 25-69 year old women screened in the three years to 30 June 2011, as a proportion of the hysterectomy adjusted 2006 Census based female population.



Target: 75% for all population groups to 31 December 2011 and 80% for all population groups from 1 January 2011

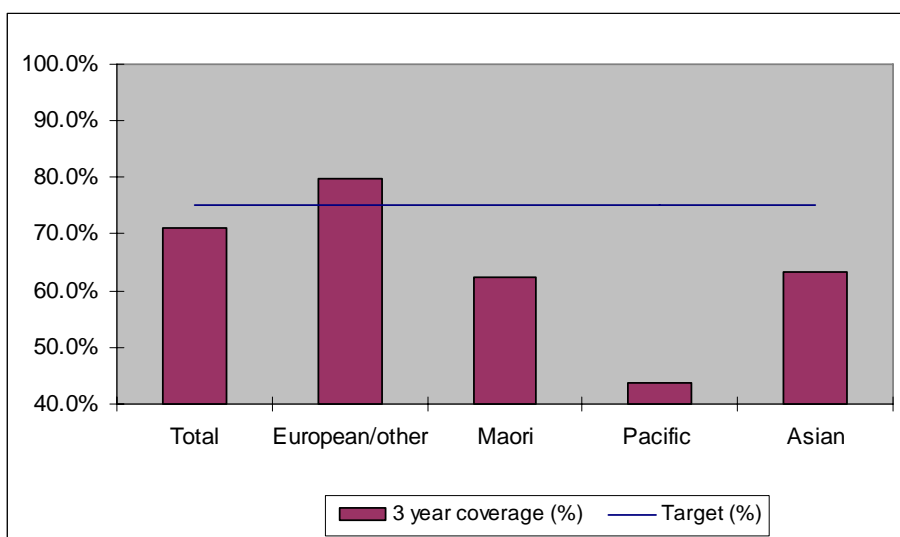
How is your DHB performing as at 30 June 2011?

Rank	DHB	June Quarter Performance	Change from previous quarter
1	Taranaki	82.9%	-0.1%
2	Wairarapa	81.7%	0.1%
3	Capital and Coast	79.3%	-0.3%
4	Nelson Marlborough	78.7%	-0.2%
5	Hawke's Bay	78.4%	-0.4%
6	Otago*	78.3%	-0.5%
7	Bay of Plenty	77.3%	-0.4%
8	Hutt Valley	76.9%	-0.4%
9	Lakes	76.9%	0.0%
10	Southland*	75.3%	-0.3%
11	Northland	75.1%	0.7%
12	Waikato	74.9%	0.1%
13	Whanganui	74.6%	0.6%
14	Tairawhiti	74.5%	1.0%
15	Mid Central	74.3%	0.2%
16	Waitemata	74.0%	-0.5%
17	Canterbury	73.5%	-0.4%
18	Auckland	73.1%	0.3%
19	South Canterbury	72.9%	-2.2%
20	West Coast	68.5%	-1.0%
21	Counties Manukau	67.3%	-0.5%

* On 1 May 2010 Southland and Otago DHBs merged to create Southern DHB.

4. NCSP coverage - Tairawhiti DHB Region - 31 December 2010 quarter

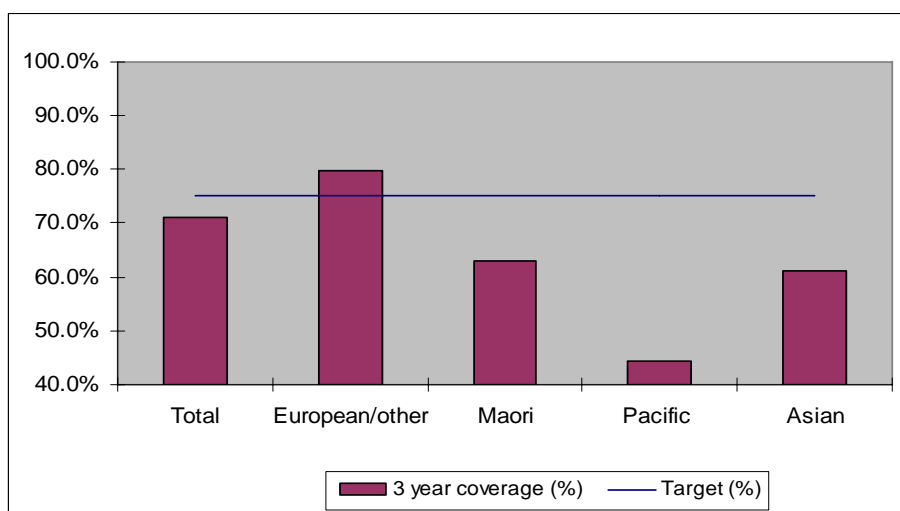
25-69 year old women screened in the three years to 31 December 2010, as a proportion of the hysterectomy adjusted 2006 Census based female population in the Tairawhiti DHB Region.



	Population	3 year coverage (n)	3 year coverage (%)
Total	11,558	8,199	70.9%
European/other	5,949	4,743	79.7%
Maori	5,147	3,206	62.3%
Pacific	219	96	43.8%
Asian	243	154	63.4%

5. NCSP coverage - Tairawhiti DHB Region - 30 September 2010 quarter

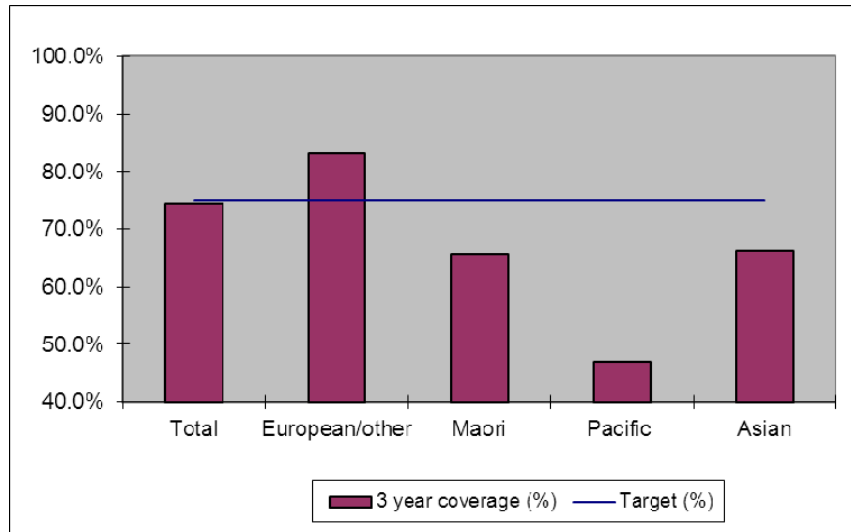
25-69 year old women screened in the three years to 30 September 2010, as a proportion of the hysterectomy adjusted 2006 Census based female population in the Tairawhiti DHB Region.



	Population	3 year coverage (n)	3 year coverage (%)
Total	11,539	8,215	71.2%
European/other	5,945	4,739	79.7%
Maori	5,140	3,234	62.9%
Pacific	214	95	44.4%
Asian	240	147	61.3%

6. NCSP coverage - Tairawhiti DHB Region - 30 June 2010 quarter

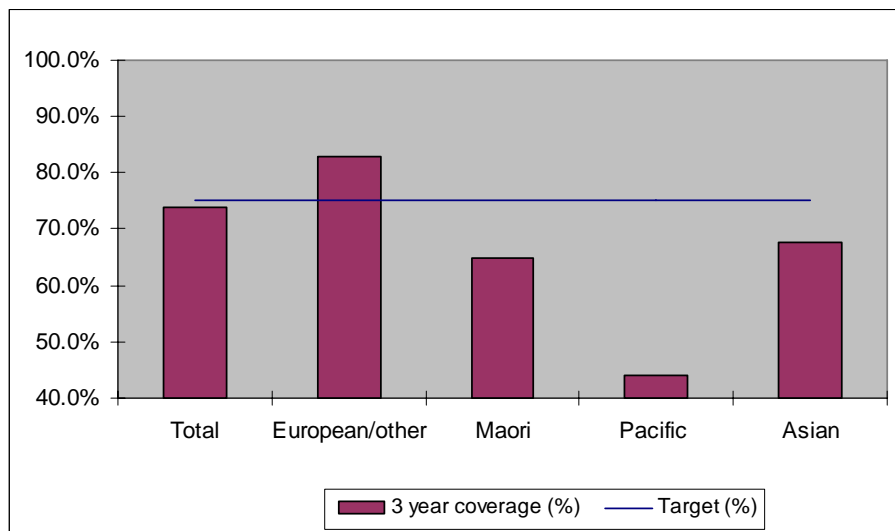
25-69 year old women screened in the three years to 30 June 2010, as a proportion of the hysterectomy adjusted 2006 Census based female population in the Tairawhiti DHB Region.



	Population	3 year coverage (n)	3 year coverage (%)
Total	11,524	8,578	74.4%
European/other	5,946	4,950	83.2%
Maori	5,127	3,370	65.7%
Pacific	211	99	46.9%
Asian	240	159	66.3%

7. NCSP coverage - Tairawhiti DHB Region - 31 March 2010 quarter

25-69 year old women screened in the three years to 31 March 2010, as a proportion of the hysterectomy adjusted 2006 Census based female population in the Tairawhiti0020DHB Region.

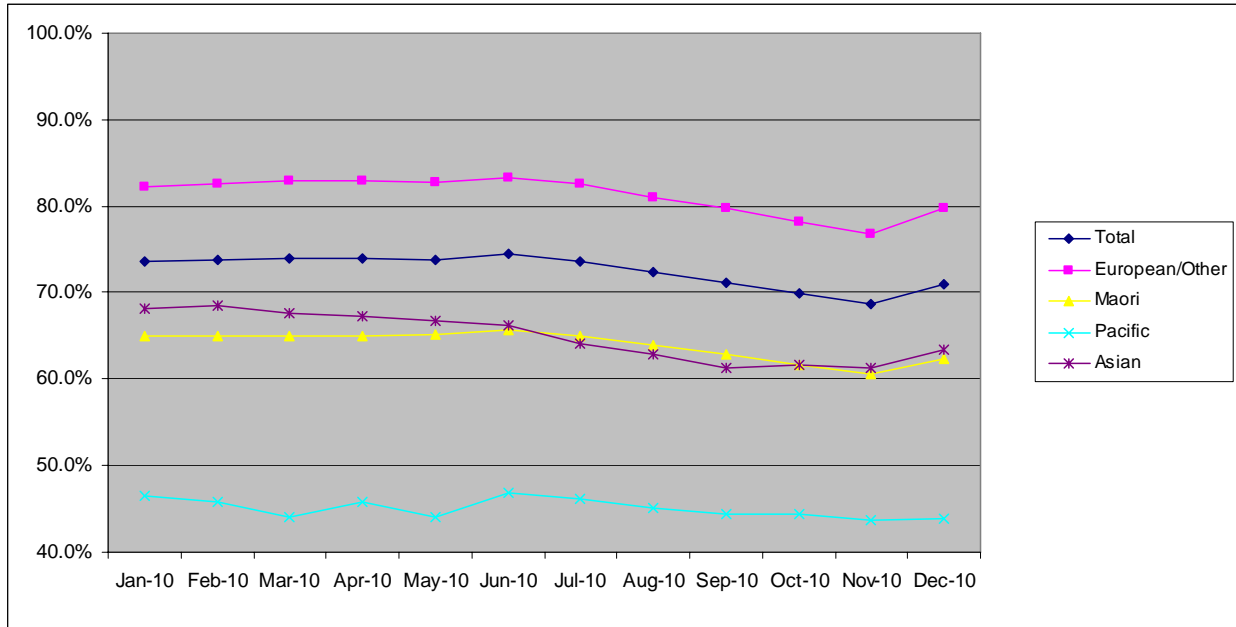


	Population	3 year coverage (n)	3 year coverage (%)
Total	11,517	8,515	73.9%
European/other	5,943	4,929	82.9%
Maori	5,120	3,329	65.0%
Pacific	213	94	44.1%
Asian	241	163	67.6%

8. NCSP summary monthly coverage in the year to 31 December 2010

Tairawhiti DHB

Monthly coverage trends for 25-69 year old women screened in the three years to 2010, as a proportion of the hysterectomy adjusted 2006 Census based female population.



Target: 75% for all population groups

How is your DHB performing as at 31 December 2010?

Rank	DHB	December Quarter Performance	Change from previous quarter
1	Taranaki	83.5%	-0.1%
2	Wairarapa	81.2%	0.5%
3	Nelson Marlborough	79.7%	-0.4%
4	Capital and Coast	79.6%	0.1%
5	Otago*	79.4%	-0.4%
6	Hawke's Bay	78.6%	0.1%
7	Bay of Plenty	78.4%	-0.3%
8	Hutt Valley	77.7%	0.2%
9	South Canterbury	77.1%	-1.2%
10	Lakes	77.0%	0.2%
11	Southland*	76.0%	0.1%
12	Canterbury	75.2%	-0.2%
13	Waikato	74.9%	0.2%
14	Waitemata	74.8%	-0.2%
15	Northland	74.3%	-0.3%
16	Mid Central	73.9%	0.2%
17	Whanganui	73.9%	0.6%
18	Auckland	72.7%	0.2%
19	Tairawhiti	70.9%	-0.3%
20	West Coast	70.0%	-0.3%
21	Counties Manukau	68.2%	-0.5%

* On 1 May 2010 Southland and Otago DHBs merged to create Southern DHB.

9. Summary Comments

3 yearly coverage to:	30 June 2011	30 June 2010	change
Total	74.5%	74.4%	0.1%
European/other	83.1%	83.2%	-0.1%
Maori	65.8%	65.7%	0.1%
Pacific	49.3%	46.9%	-0.6%
Asian	69.2%	66.3%	2.9%
Ranking	14 of 21	14 of 21	0