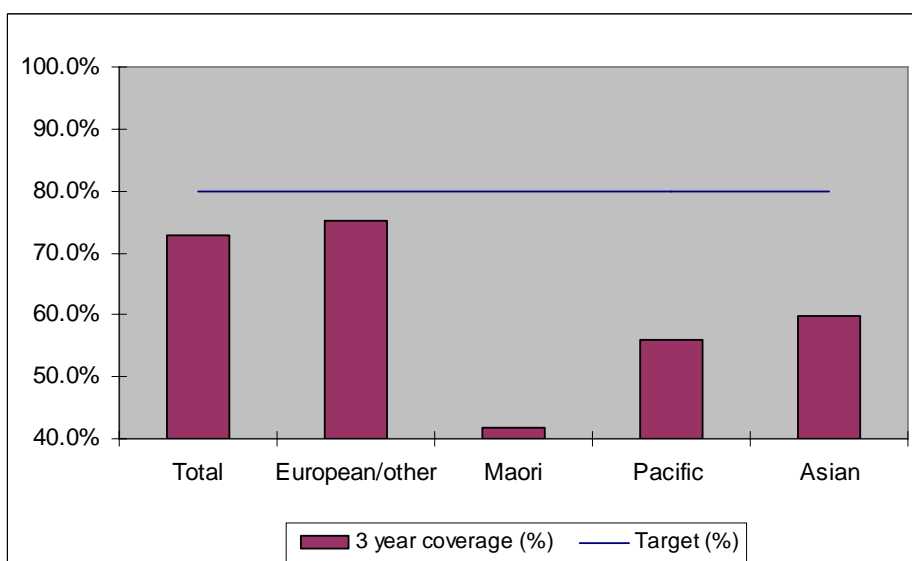


### 1. NCSP coverage - South Canterbury DHB Region - 30 June 2011 quarter

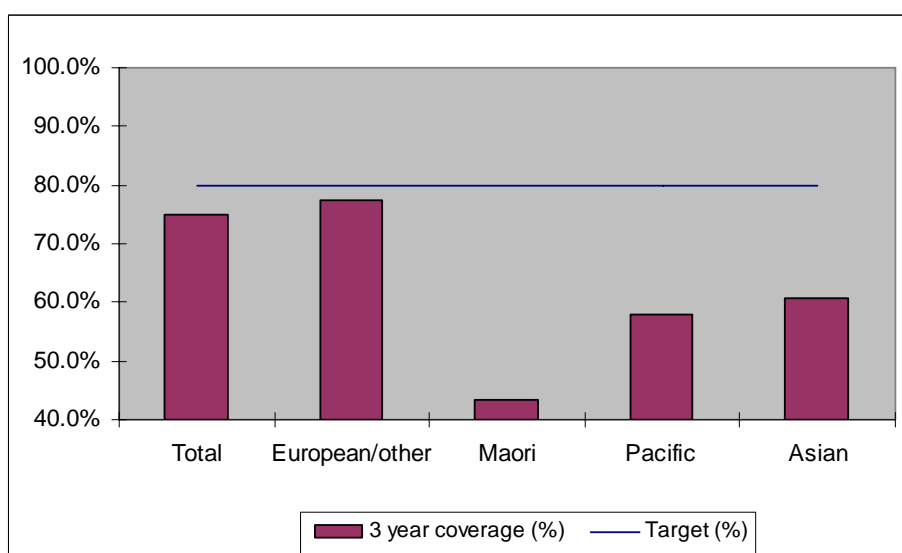
25-69 year old women screened in the three years to 30 June 2011, as a proportion of the hysterectomy adjusted 2006 Census based female population in the South Canterbury DHB Region.



|                       | Population | 3 year coverage (n) | 3 year coverage (%) |
|-----------------------|------------|---------------------|---------------------|
| <b>Total</b>          | 13,697     | 9,987               | 72.9%               |
| <b>European/other</b> | 12,514     | 9,425               | 75.3%               |
| <b>Maori</b>          | 783        | 327                 | 41.8%               |
| <b>Pacific</b>        | 102        | 57                  | 55.9%               |
| <b>Asian</b>          | 298        | 178                 | 59.7%               |

### 2. NCSP coverage - South Canterbury DHB Region - 31 March 2011 quarter

25-69 year old women screened in the three years to 31 March 2011, as a proportion of the hysterectomy adjusted 2006 Census based female population in the South Canterbury DHB Region.

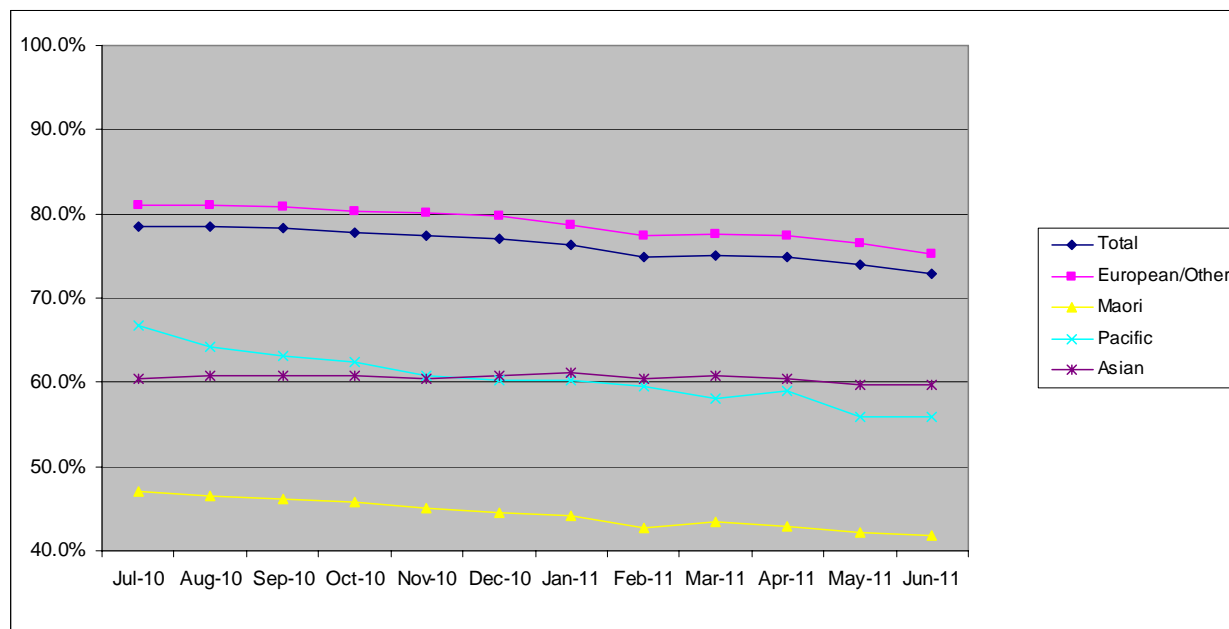


|                       | Population | 3 year coverage (n) | 3 year coverage (%) |
|-----------------------|------------|---------------------|---------------------|
| <b>Total</b>          | 13,712     | 10,298              | 75.1%               |
| <b>European/other</b> | 12,530     | 9,719               | 77.6%               |
| <b>Maori</b>          | 784        | 340                 | 43.4%               |
| <b>Pacific</b>        | 100        | 58                  | 58.0%               |
| <b>Asian</b>          | 298        | 181                 | 60.7%               |

### 3. NCSP summary monthly coverage in the year to 30 June 2011

#### South Canterbury DHB

Monthly coverage trends for 25-69 year old women screened in the three years to 30 June 2011 as a proportion of the hysterectomy adjusted 2006 Census based female population.



Target: 75% for all population groups to 31 December 2010 and 80% for all population groups from 1 January 2011

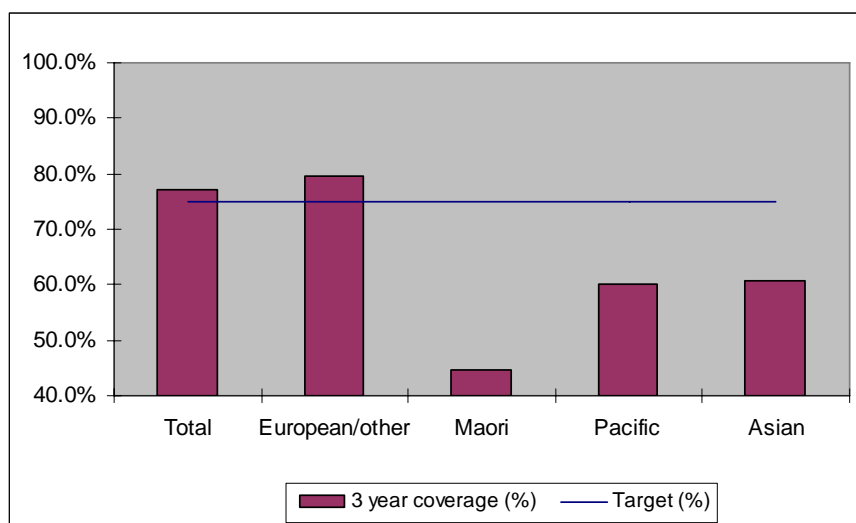
#### How was your DHB performing as at 30 June 2011?

| Rank      | DHB                     | December Quarter Performance | Change from previous quarter |
|-----------|-------------------------|------------------------------|------------------------------|
| 1         | Taranaki                | 82.9%                        | -0.1%                        |
| 2         | Wairarapa               | 81.7%                        | 0.1%                         |
| 3         | Capital and Coast       | 79.3%                        | -0.3%                        |
| 4         | Nelson Marlborough      | 78.7%                        | -0.2%                        |
| 5         | Hawke's Bay             | 78.4%                        | -0.3%                        |
| 6         | Otago*                  | 78.3%                        | -0.5%                        |
| 7         | Bay of Plenty           | 77.3%                        | -0.4%                        |
| 8         | Hutt Valley             | 76.9%                        | -0.4%                        |
| 9         | Lakes                   | 76.9%                        | 0.0%                         |
| 10        | Southland*              | 75.3%                        | -0.4%                        |
| 11        | Northland               | 75.1%                        | 0.7%                         |
| 12        | Waikato                 | 74.9%                        | 0.1%                         |
| 13        | Whanganui               | 74.6%                        | 0.6%                         |
| 14        | Tairāwhiti              | 74.5%                        | 1.0%                         |
| 15        | Mid Central             | 74.3%                        | 0.1%                         |
| 16        | Waitemata               | 74.0%                        | -0.5%                        |
| 17        | Canterbury              | 73.5%                        | -0.4%                        |
| 18        | Auckland                | 73.1%                        | 0.3%                         |
| <b>19</b> | <b>South Canterbury</b> | <b>72.9%</b>                 | <b>-2.2%</b>                 |
| 20        | West Coast              | 68.5%                        | -1.0%                        |
| 21        | Counties Manukau        | 67.3%                        | -0.5%                        |

\* On 1 May 2010 Southland and Otago DHBs merged to create Southern DHB.

#### 4. NCSP coverage – South Canterbury DHB Region - 31 December 2010 quarter

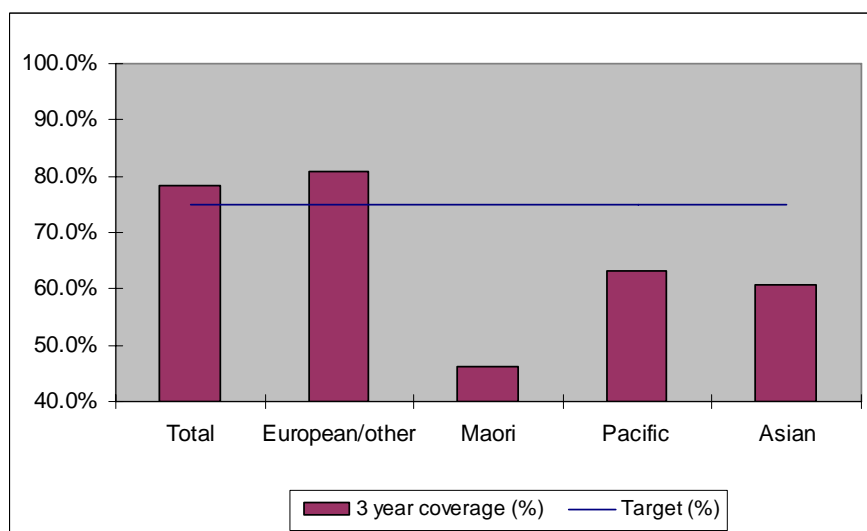
25-69 year old women screened in the three years to 31 December 2010, as a proportion of the hysterectomy adjusted 2006 Census based female population in the South Canterbury DHB Region.



|                       | Population | 3 year coverage (n) | 3 year coverage (%) |
|-----------------------|------------|---------------------|---------------------|
| <b>Total</b>          | 13,728     | 10,589              | 77.1%               |
| <b>European/other</b> | 12,547     | 9,999               | 79.7%               |
| <b>Maori</b>          | 784        | 349                 | 44.5%               |
| <b>Pacific</b>        | 98         | 59                  | 60.2%               |
| <b>Asian</b>          | 299        | 182                 | 60.9%               |

#### 5. NCSP coverage - South Canterbury DHB Region - 30 September 2010 quarter

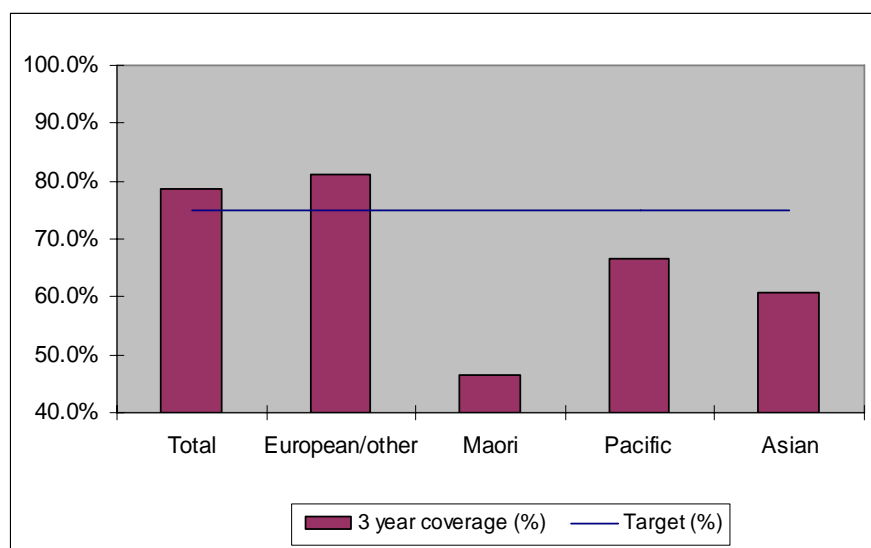
25-69 year old women screened in the three years to 30 September 2010, as a proportion of the hysterectomy adjusted 2006 Census based female population in the South Canterbury DHB Region.



|                       | Population | 3 year coverage (n) | 3 year coverage (%) |
|-----------------------|------------|---------------------|---------------------|
| <b>Total</b>          | 13,738     | 10,756              | 78.3%               |
| <b>European/other</b> | 12,561     | 10,153              | 80.8%               |
| <b>Maori</b>          | 784        | 362                 | 46.2%               |
| <b>Pacific</b>        | 95         | 60                  | 63.2%               |
| <b>Asian</b>          | 298        | 181                 | 60.7%               |

## 6. NCSP coverage - South Canterbury DHB Region - 30 June 2010 quarter

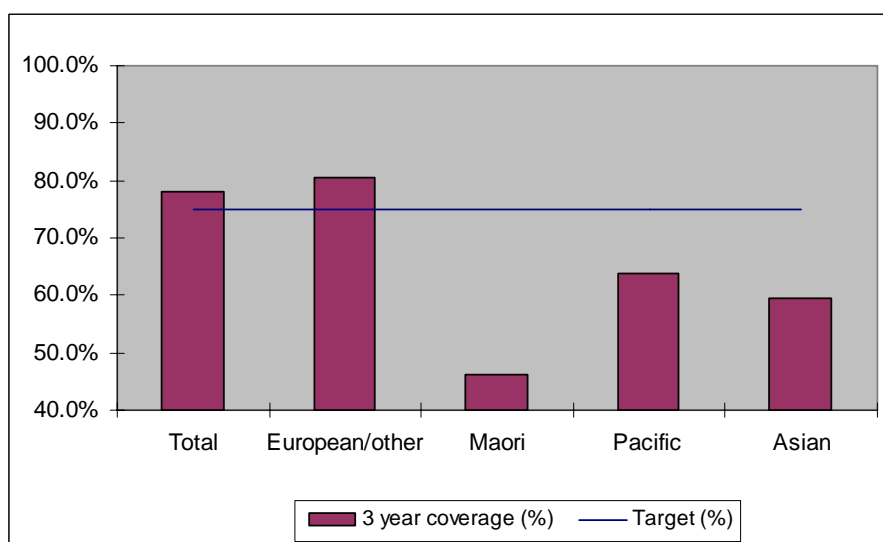
25-69 year old women screened in the three years to 30 June 2010, as a proportion of the hysterectomy adjusted 2006 Census based female population in the South Canterbury DHB Region.



|                       | Population | 3 year coverage (n) | 3 year coverage (%) |
|-----------------------|------------|---------------------|---------------------|
| <b>Total</b>          | 13,749     | 10,796              | 78.5%               |
| <b>European/other</b> | 12,575     | 10,188              | 81.0%               |
| <b>Maori</b>          | 783        | 365                 | 46.6%               |
| <b>Pacific</b>        | 93         | 62                  | 66.7%               |
| <b>Asian</b>          | 298        | 181                 | 60.7%               |

## 7. NCSP coverage - South Canterbury DHB Region - 31 March 2010 quarter

25-69 year old women screened in the three years to 31 March 2010, as a proportion of the hysterectomy adjusted 2006 Census based female population in the South Canterbury DHB Region.

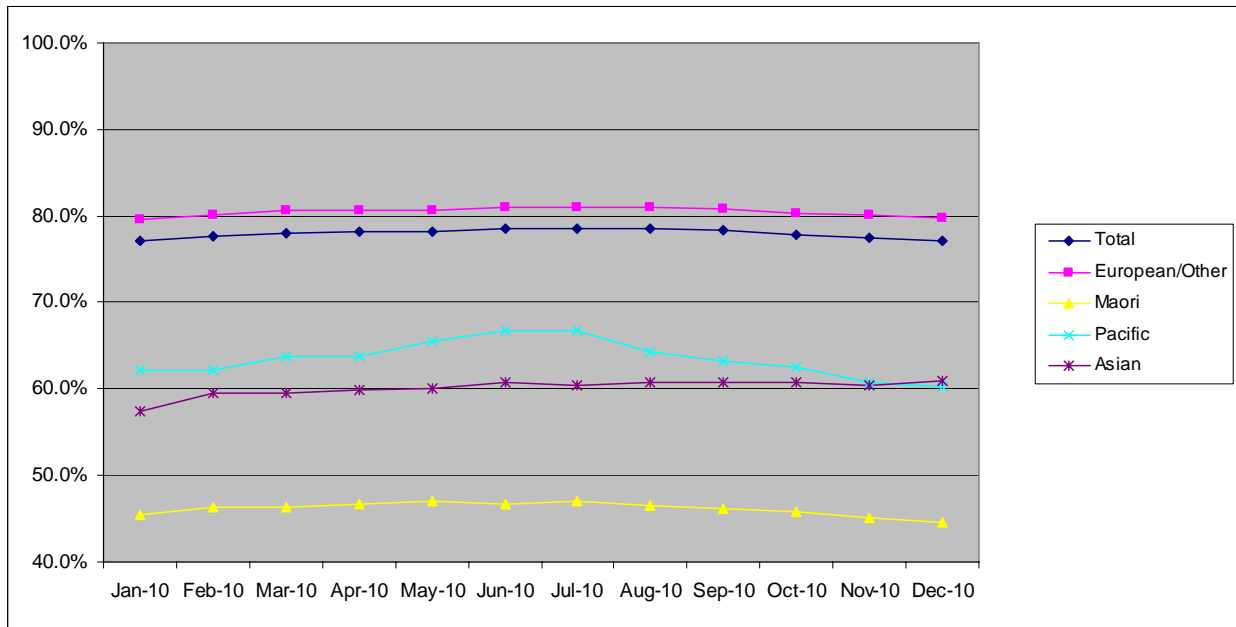


|                       | Population | 3 year coverage (n) | 3 year coverage (%) |
|-----------------------|------------|---------------------|---------------------|
| <b>Total</b>          | 13,767     | 10,747              | 78.1%               |
| <b>European/other</b> | 12,599     | 10,151              | 80.6%               |
| <b>Maori</b>          | 778        | 360                 | 46.3%               |
| <b>Pacific</b>        | 94         | 60                  | 63.8%               |
| <b>Asian</b>          | 296        | 176                 | 59.5%               |

## 8. NCSP summary monthly coverage in the year to 31 December 2010

### South Canterbury DHB

Monthly coverage trends for 25-69 year old women screened in the three years to 2010, as a proportion of the hysterectomy adjusted 2006 Census based female population.



Target: 75% for all population groups

### How is your DHB performing as at 31 December 2010?

| Rank     | DHB                     | December Quarter Performance | Change from previous quarter |
|----------|-------------------------|------------------------------|------------------------------|
| 1        | Taranaki                | 83.5%                        | -0.1%                        |
| 2        | Wairarapa               | 81.2%                        | 0.5%                         |
| 3        | Nelson Marlborough      | 79.7%                        | -0.4%                        |
| 4        | Capital and Coast       | 79.6%                        | 0.1%                         |
| 5        | Otago*                  | 79.4%                        | -0.4%                        |
| 6        | Hawke's Bay             | 78.6%                        | 0.1%                         |
| 7        | Bay of Plenty           | 78.4%                        | -0.3%                        |
| 8        | Hutt Valley             | 77.7%                        | 0.2%                         |
| <b>9</b> | <b>South Canterbury</b> | <b>77.1%</b>                 | <b>-1.2%</b>                 |
| 10       | Lakes                   | 77.0%                        | 0.2%                         |
| 11       | Southland*              | 76.0%                        | 0.1%                         |
| 12       | Canterbury              | 75.2%                        | -0.2%                        |
| 13       | Waikato                 | 74.9%                        | 0.2%                         |
| 14       | Waitemata               | 74.8%                        | -0.2%                        |
| 15       | Northland               | 74.3%                        | -0.3%                        |
| 16       | Mid Central             | 73.9%                        | 0.2%                         |
| 17       | Whanganui               | 73.9%                        | 0.6%                         |
| 18       | Auckland                | 72.7%                        | 0.3%                         |
| 19       | Tairāwhiti              | 70.9%                        | -0.3%                        |
| 20       | West Coast              | 70.0%                        | -0.3%                        |
| 21       | Counties Manukau        | 68.2%                        | -0.5%                        |

\* On 1 May 2010 Southland and Otago DHBs merged to create Southern DHB.

## 9. Summary Comments

| <b>3 yearly coverage to:</b> | <b>30 June 2011</b> | <b>30 June 2010</b> | <b>change</b> |
|------------------------------|---------------------|---------------------|---------------|
| <b>Total</b>                 | 72.9%               | 78.5%               | -5.6%         |
| <b>European/other</b>        | 75.3%               | 81.0%               | -5.7%         |
| <b>Maori</b>                 | 41.8%               | 46.6%               | -4.8%         |
| <b>Pacific</b>               | 55.9%               | 66.7%               | -10.8%        |
| <b>Asian</b>                 | 59.7%               | 60.7%               | -1.0%         |
| <b>Ranking</b>               | 19 of 21            | 7 of 21             | -12           |