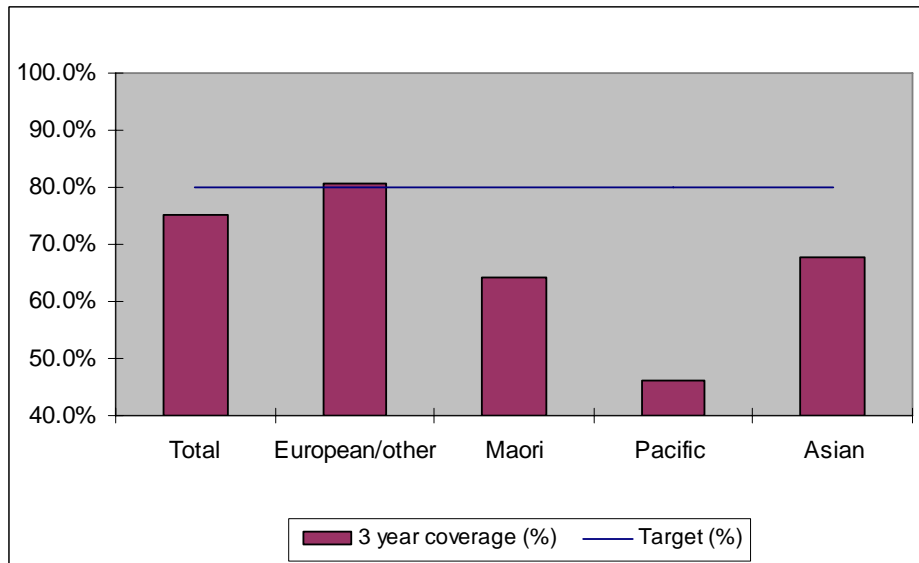


### 1. NCSP coverage - Northland DHB Region - 30 June 2011 quarter

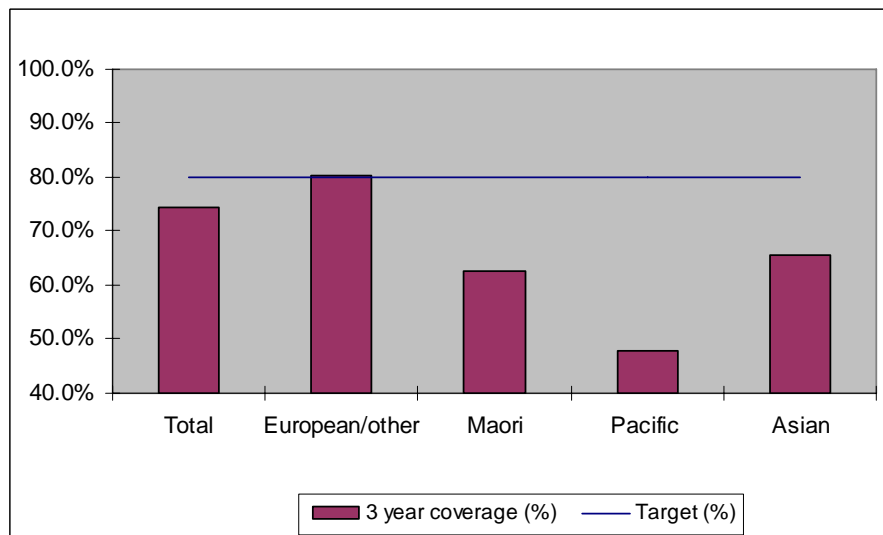
25-69 year old women screened in the three years to 30 June 2011, as a proportion of the hysterectomy adjusted 2006 Census based female population in the Northland DHB Region.



	Population	3 year coverage (n)	3 year coverage (%)
<b>Total</b>	39,458	29,630	75.1%
<b>European/other</b>	26,525	21,423	80.8%
<b>Maori</b>	11,286	7,228	64.0%
<b>Pacific</b>	622	286	46.0%
<b>Asian</b>	1,025	693	67.6%

### 2. NCSP coverage - Northland DHB Region - 31 March 2011 quarter

25-69 year old women screened in the three years to 31 March 2011, as a proportion of the hysterectomy adjusted 2006 Census based female population in the Northland DHB Region.

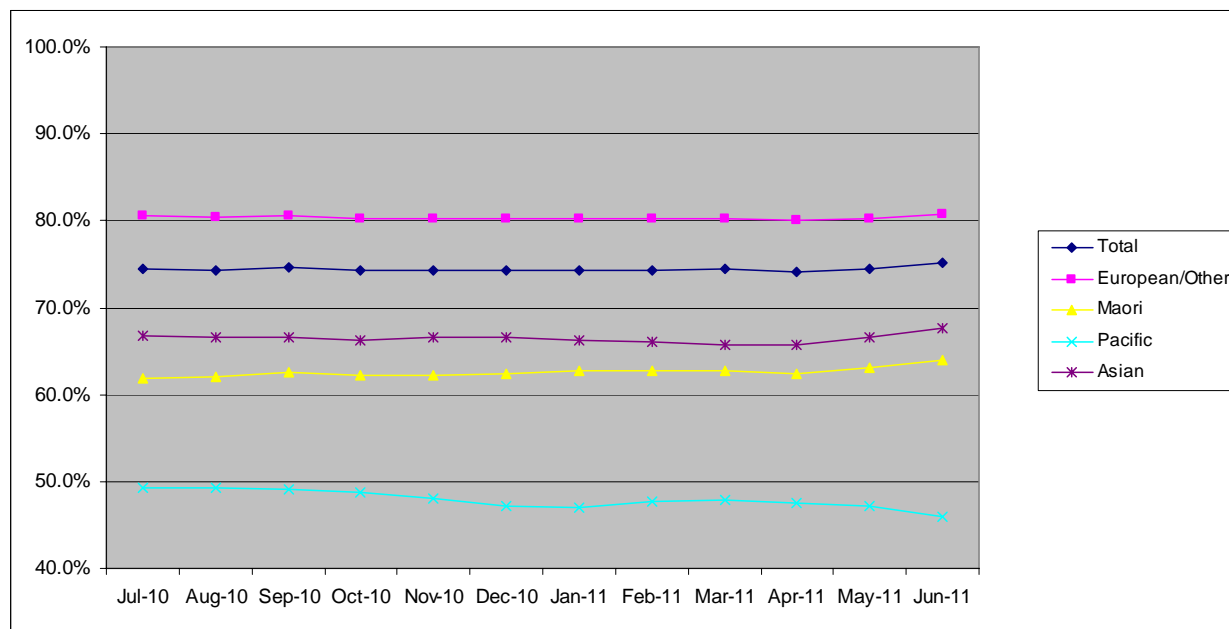


	Population	3 year coverage (n)	3 year coverage (%)
<b>Total</b>	39,409	29,314	74.4%
<b>European/other</b>	26,510	21,290	80.3%
<b>Maori</b>	11,262	7,059	62.7%
<b>Pacific</b>	615	294	47.8%
<b>Asian</b>	1,022	671	65.7%

### 3. NCSP summary monthly coverage in the year to 30 June 2011

#### Northland DHB

Monthly coverage trends for 25-69 year old women screened in the three years to 30 June 2011, as a proportion of the hysterectomy adjusted 2006 Census based female population.



Target: 75% for all population groups to 31 December 2011 and 80% for all population groups from 1 January 2011.

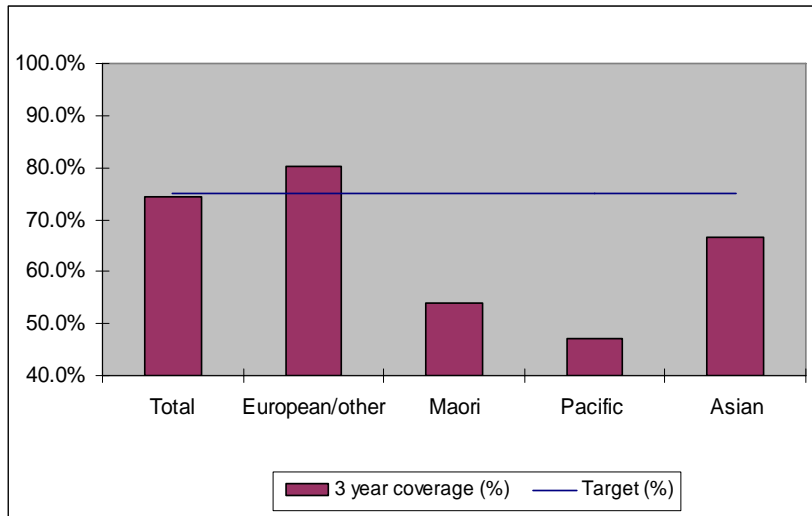
#### How was your DHB performing as at 30 June 2011?

Rank	DHB	December Quarter Performance	Change from previous quarter
1	Taranaki	82.9%	-0.1%
2	Wairarapa	81.7%	0.1%
3	Capital and Coast	79.3%	-0.3%
4	Nelson Marlborough	78.7%	-0.2%
5	Hawke's Bay	78.4%	-0.4%
6	Otago*	78.3%	-0.5%
7	Bay of Plenty	77.3%	-0.4%
8=	Hutt Valley	76.9%	-0.4%
8=	Lakes	76.9%	0.0%
10	Southland*	75.3%	-0.3%
<b>11</b>	<b>Northland</b>	<b>75.1%</b>	<b>0.7%</b>
12	Waikato	74.9%	0.1%
13	Whanganui	74.6%	0.6%
14	Tairāwhiti	74.5%	1.0%
15	Mid Central	74.3%	0.2%
16	Waitemata	74.0%	-0.5%
17	Canterbury	73.5%	-0.4%
18	Auckland	73.1%	0.3%
19	South Canterbury	72.9%	-2.2%
20	West Coast	68.5%	-1.0%
21	Counties Manukau	67.3%	-0.5%

\* On 1 May 2010 Southland and Otago DHBs merged to create Southern DHB.

#### 4. NCSP coverage - Northland DHB Region - 31 December 2010 quarter

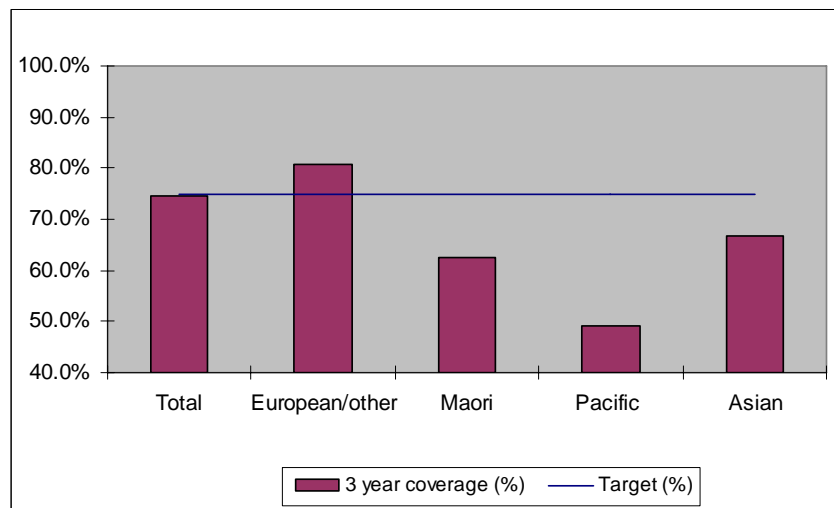
25-69 year old women screened in the three years to 31 December 2010, as a proportion of the hysterectomy adjusted 2006 Census based female population in the Northland DHB Region.



	Population	3 year coverage (n)	3 year coverage (%)
<b>Total</b>	39,352	29,236	74.3%
<b>European/other</b>	26,494	21,267	80.3%
<b>Maori</b>	11,236	7,007	62.4%
<b>Pacific</b>	605	285	47.1%
<b>Asian</b>	1,017	677	66.6%

#### 5. NCSP coverage - Northland DHB Region - 30 September 2010 quarter

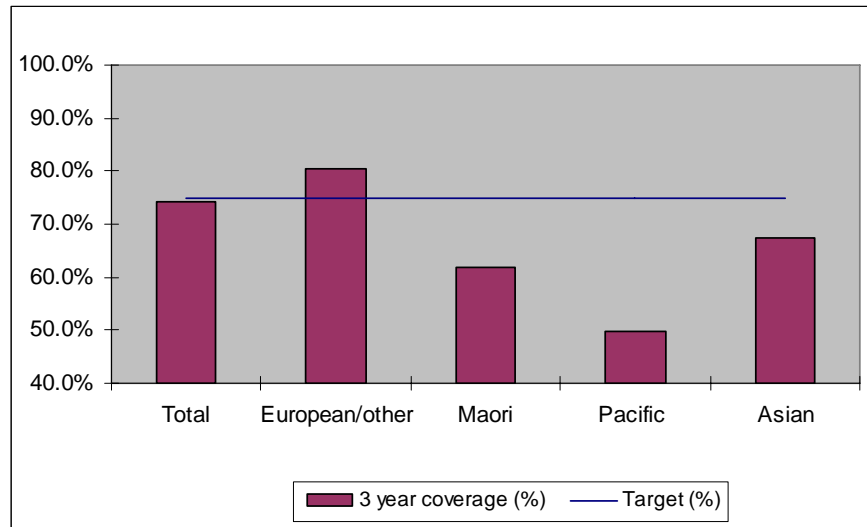
25-69 year old women screened in the three years to 30 September 2010, as a proportion of the hysterectomy adjusted 2006 Census based female population in the Northland DHB Region.



	Population	3 year coverage (n)	3 year coverage (%)
<b>Total</b>	39,298	29,323	74.6%
<b>European/other</b>	26,479	21,351	80.6%
<b>Maori</b>	11,212	7,006	62.5%
<b>Pacific</b>	595	292	49.1%
<b>Asian</b>	1,012	674	66.6%

## 6. NCSP coverage - Northland DHB Region - 30 June 2010 quarter

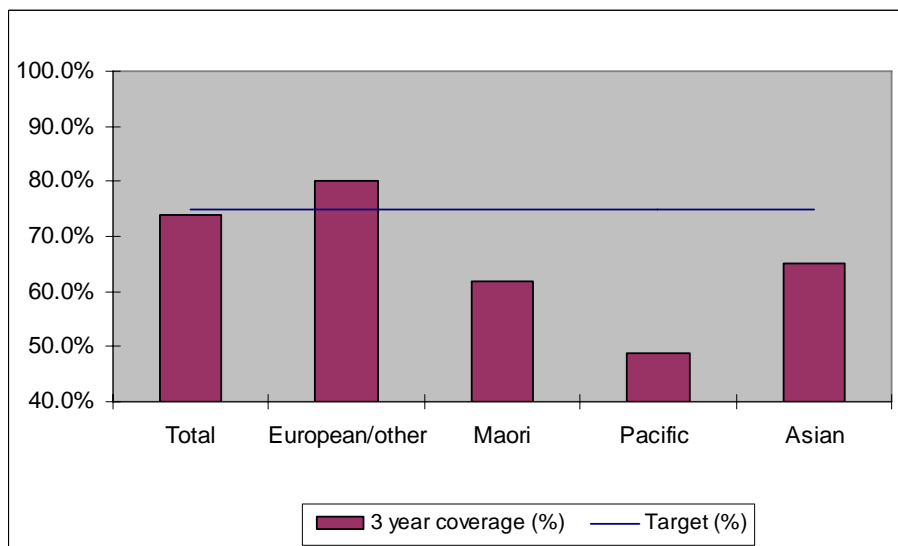
25-69 year old women screened in the three years to 30 June 2010, as a proportion of the hysterectomy adjusted 2006 Census based female population in the Northland DHB Region.



	Population	3 year coverage (n)	3 year coverage (%)
<b>Total</b>	39,239	29,119	74.2%
<b>European/other</b>	26,462	21,243	80.3%
<b>Maori</b>	11,185	6,906	61.7%
<b>Pacific</b>	585	292	49.9%
<b>Asian</b>	1,007	678	67.3%

## 7. NCSP coverage - Northland DHB Region - 31 March 2010 quarter

25-69 year old women screened in the three years to 31 March 2010, as a proportion of the hysterectomy adjusted 2006 Census based female population in the Northland DHB Region.

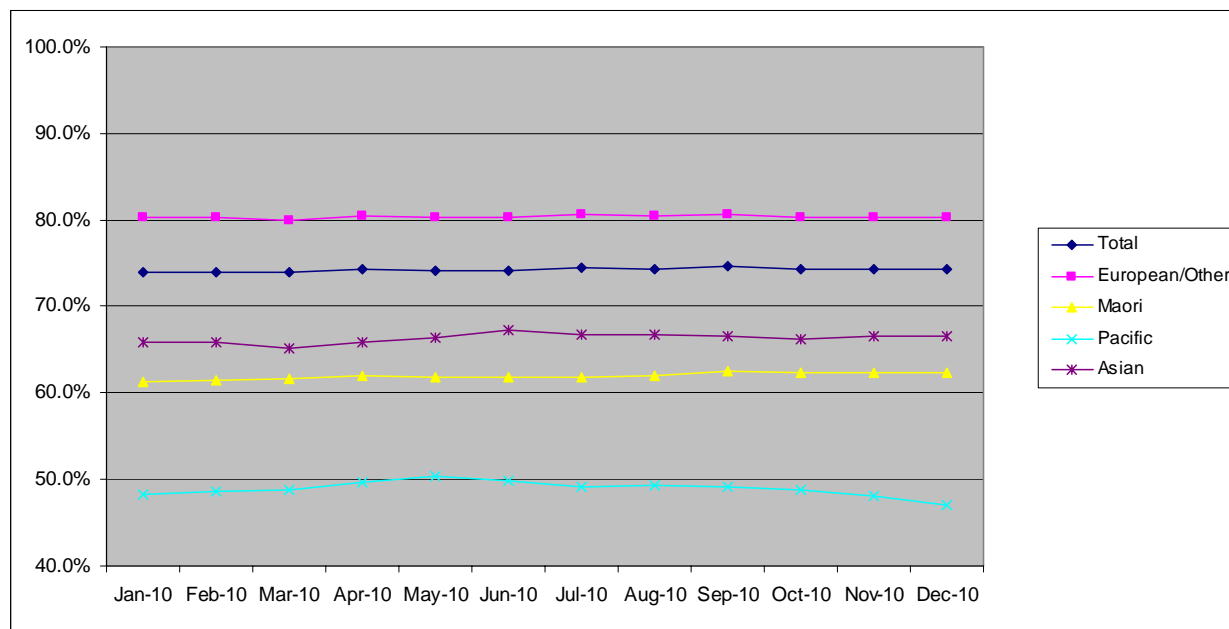


	Population	3 year coverage (n)	3 year coverage (%)
<b>Total</b>	39,172	28,961	73.9%
<b>European/other</b>	26,436	21,145	80.0%
<b>Maori</b>	11,155	6,881	61.7%
<b>Pacific</b>	583	285	48.9%
<b>Asian</b>	998	650	65.1%

## 8. NCSP summary monthly coverage in the year to 31 December 2010

### Northland DHB

Monthly coverage trends for 25-69 year old women screened in the three years to 2010, as a proportion of the hysterectomy adjusted 2006 Census based female population.



Target: 75% for all population groups

### How is your DHB performing as at 31 December 2010?

Rank	DHB	December Quarter Performance	Change from previous quarter
1	Taranaki	83.5%	-0.1%
2	Wairarapa	81.2%	0.5%
3	Nelson Marlborough	79.7%	-0.4%
4	Capital and Coast	79.6%	0.1%
5	Otago*	79.4%	-0.4%
6	Hawke's Bay	78.6%	0.1%
7	Bay of Plenty	78.4%	-0.3%
8	Hutt Valley	77.7%	0.2%
9	South Canterbury	77.1%	-1.2%
10	Lakes	77.0%	0.2%
11	Southland*	76.0%	0.1%
12	Canterbury	75.2%	-0.2%
13	Waikato	74.9%	0.2%
14	Waitemata	74.8%	-0.2%
<b>15</b>	<b>Northland</b>	<b>74.3%</b>	<b>-0.3%</b>
16	Mid Central	73.9%	0.2%
17	Whanganui	73.9%	0.6%
18	Auckland	72.7%	0.2%
19	Tairāwhiti	70.9%	-0.3%
20	West Coast	70.0%	-0.3%
21	Counties Manukau	68.2%	-0.5%

\* On 1 May 2010 Southland and Otago DHBs merged to create Southern DHB.

## 9. Summary Comments

<b>3 yearly coverage to:</b>	<b>30 June 2011</b>	<b>30 June 2010</b>	<b>change</b>
<b>Total</b>	75.1%	74.2%	0.9%
<b>European/other</b>	80.8%	80.3%	0.5%
<b>Maori</b>	64.0%	61.7%	2.3%
<b>Pacific</b>	46.0%	49.9%	-3.9%
<b>Asian</b>	67.6%	67.3%	0.3%
<b>Ranking</b>	11 of 21	15 = of 11	4