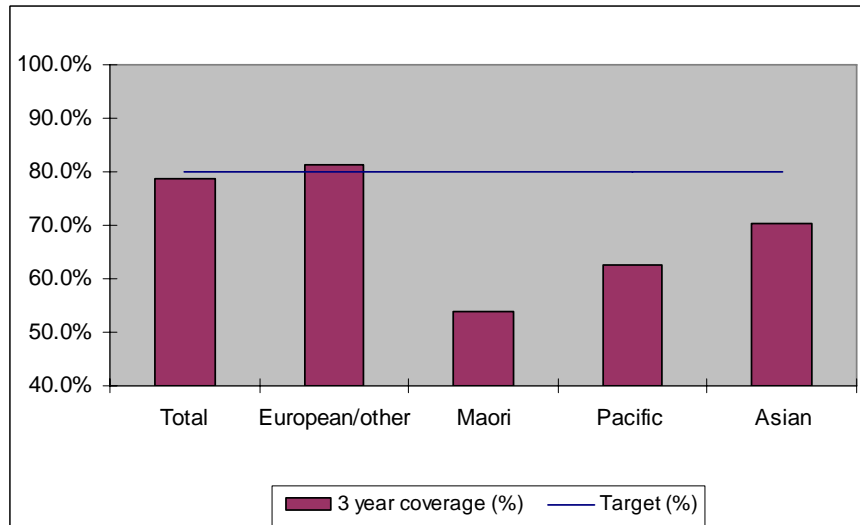


1. NCSP coverage - Nelson Marlborough DHB Region - 30 June 2011 quarter

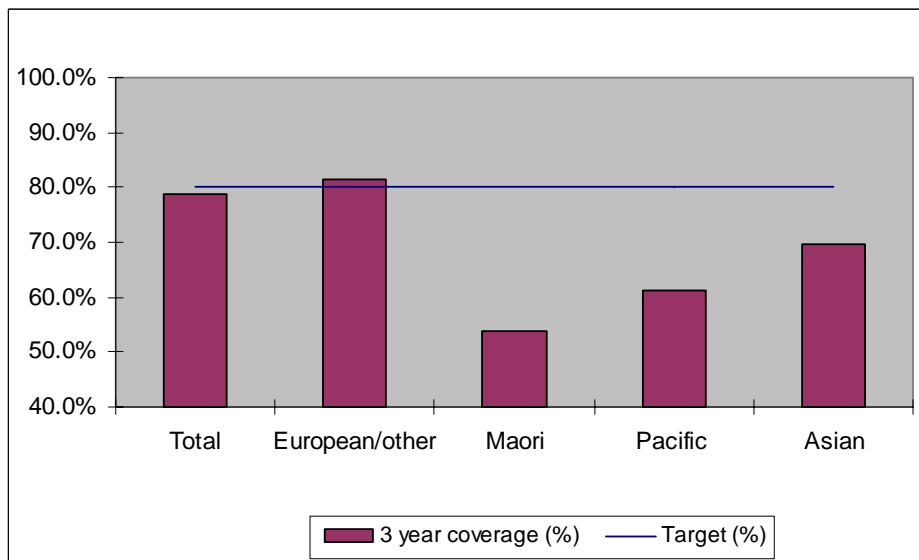
25-69 year old women screened in the three years to 30 June 2011, as a proportion of the hysterectomy adjusted 2006 Census based female population in the Nelson Marlborough DHB Region.



	Population	3 year coverage (n)	3 year coverage (%)
Total	35,890	28,241	78.7%
European/other	31,744	25,813	81.3%
Maori	2,828	1,527	54.0%
Pacific	346	216	62.4%
Asian	972	685	70.5%

2. NCSP coverage - Nelson Marlborough DHB Region -31 March 2011 quarter

25-69 year old women screened in the three years to 31 March 2011, as a proportion of the hysterectomy adjusted 2006 Census based female population in the Nelson Marlborough DHB Region.

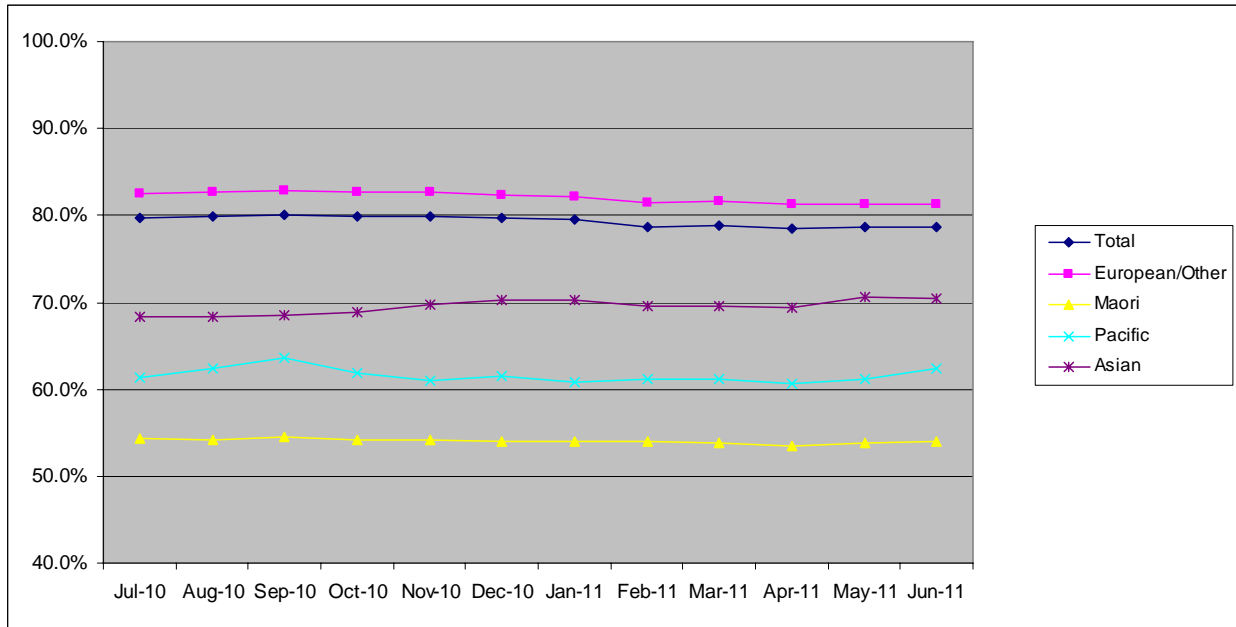


	Population	3 year coverage (n)	3 year coverage (%)
Total	35,855	28,288	78.9%
European/other	31,730	25,891	81.6%
Maori	2,818	1,517	53.8%
Pacific	343	210	61.2%
Asian	964	670	69.5%

3. NCSP summary monthly coverage in the year to 30 June 2011

Nelson Marlborough DHB

Monthly coverage trends for 25-69 year old women screened in the three years to 30 June 2011, as a proportion of the hysterectomy adjusted 2006 Census based female population.



Target: 75% for all population groups to 31 December 2010 and 80% for all population groups from 1 January 2011

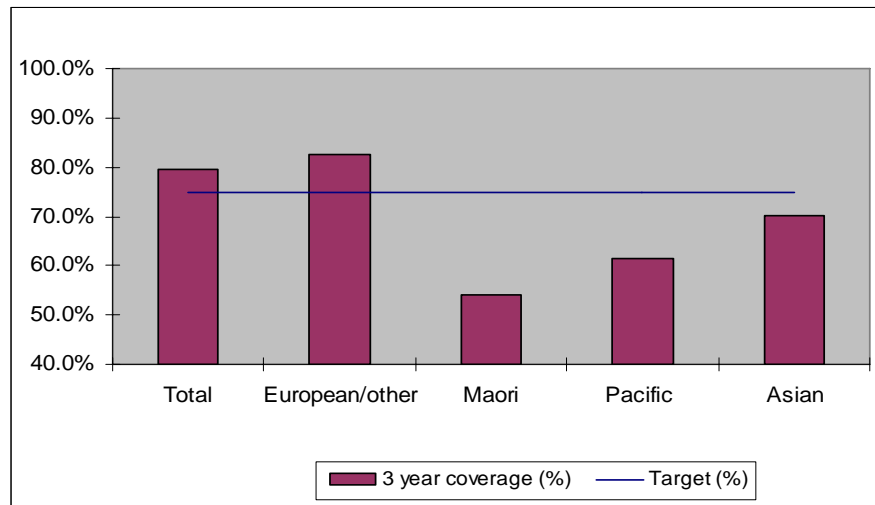
How was your DHB performing as at 30 June 2011?

Rank	DHB	December Quarter Performance	Change from previous quarter
1	Taranaki	82.9%	-0.1%
2	Wairarapa	81.7%	0.1%
3	Capital and Coast	79.3%	-0.3%
4	Nelson Marlborough	78.7%	-0.2%
5	Hawke's Bay	78.4%	-0.4%
6	Otago*	78.3%	-0.5%
7	Bay of Plenty	77.3%	-0.4%
8	Hutt Valley	76.9%	-0.4%
9	Lakes	76.9%	0.0%
10	Southland*	75.3%	-0.3%
11	Northland	75.1%	0.7%
12	Waikato	74.9%	0.1%
13	Whanganui	74.6%	0.6%
14	Tairāwhiti	74.5%	1.0%
15	Mid Central	74.3%	0.2%
16	Waitemata	74.0%	-0.5%
17	Canterbury	73.5%	-0.4%
18	Auckland	73.1%	0.3%
19	South Canterbury	72.9%	-2.2%
20	West Coast	68.5%	-1.0%
21	Counties Manukau	67.3%	-0.5%

* On 1 May 2010 Southland and Otago DHBs merged to create Southern DHB

4. NCSP coverage - Nelson Marlborough DHB Region - 31 December 2010 quarter

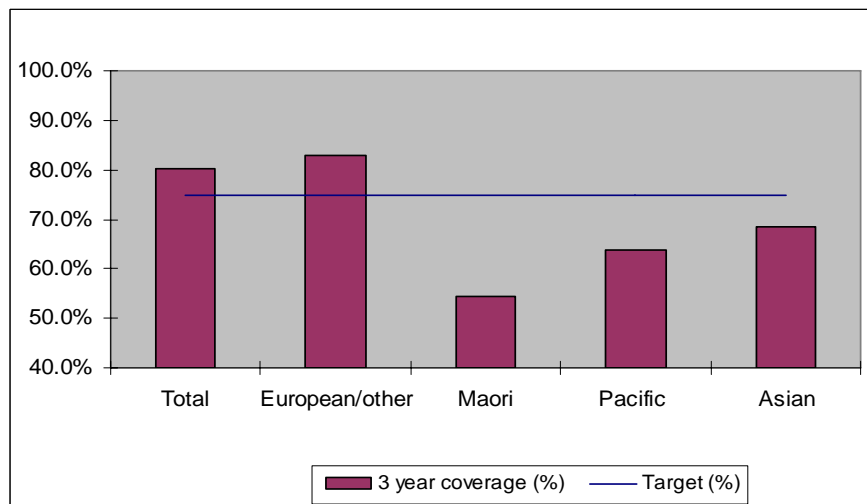
25-69 year old women screened in the three years to 31 December 2010, as a proportion of the hysterectomy adjusted 2006 Census based female population in the Nelson Marlborough DHB Region.



	Population	3 year coverage (n)	3 year coverage (%)
Total	35,814	28,528	79.7%
European/other	31,715	26,134	82.4%
Maori	2,806	1,515	54.0%
Pacific	340	209	61.5%
Asian	953	670	70.3%

5. NCSP coverage - Nelson Marlborough DHB Region - 30 September 2010 quarter

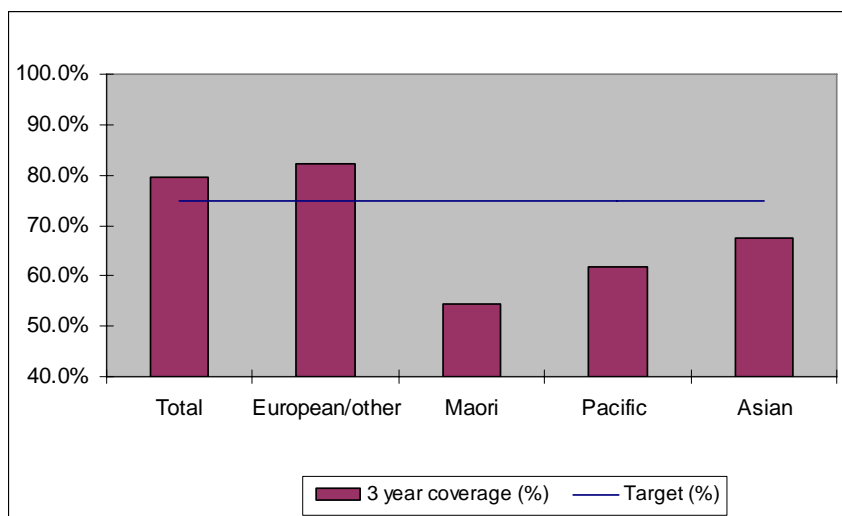
25-69 year old women screened in the three years to 30 September 2010, as a proportion of the hysterectomy adjusted 2006 Census based female population in the Nelson Marlborough DHB Region.



	Population	3 year coverage (n)	3 year coverage (%)
Total	35,775	28,649	80.1%
European/other	31,699	26,267	82.9%
Maori	2,796	1,522	54.4%
Pacific	336	214	63.7%
Asian	944	646	68.4%

6. NCSP coverage - Nelson Marlborough DHB Region - 30 June 2010 quarter

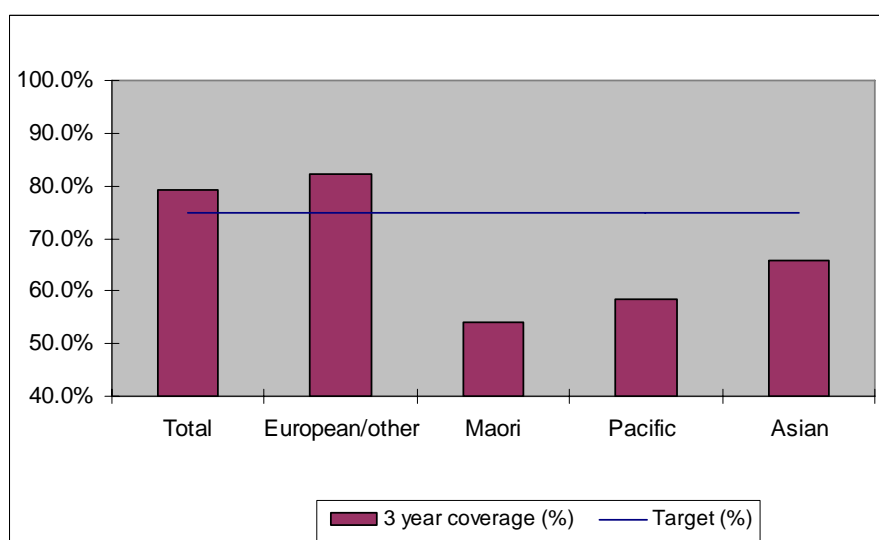
25-69 year old women screened in the three years to 30 June 2010, as a proportion of the hysterectomy adjusted 2006 Census based female population in the Nelson Marlborough DHB Region.



	Population	3 year coverage (n)	3 year coverage (%)
Total	35,730	28,435	79.6%
European/other	31,683	26,088	82.3%
Maori	2,782	1,513	54.4%
Pacific	332	205	61.7%
Asian	933	629	67.4%

7. NCSP coverage - Nelson Marlborough DHB Region - 31 March 2010 quarter

25-69 year old women screened in the three years to 31 March 2010, as a proportion of the hysterectomy adjusted 2006 Census based female population in the Nelson Marlborough DHB Region.

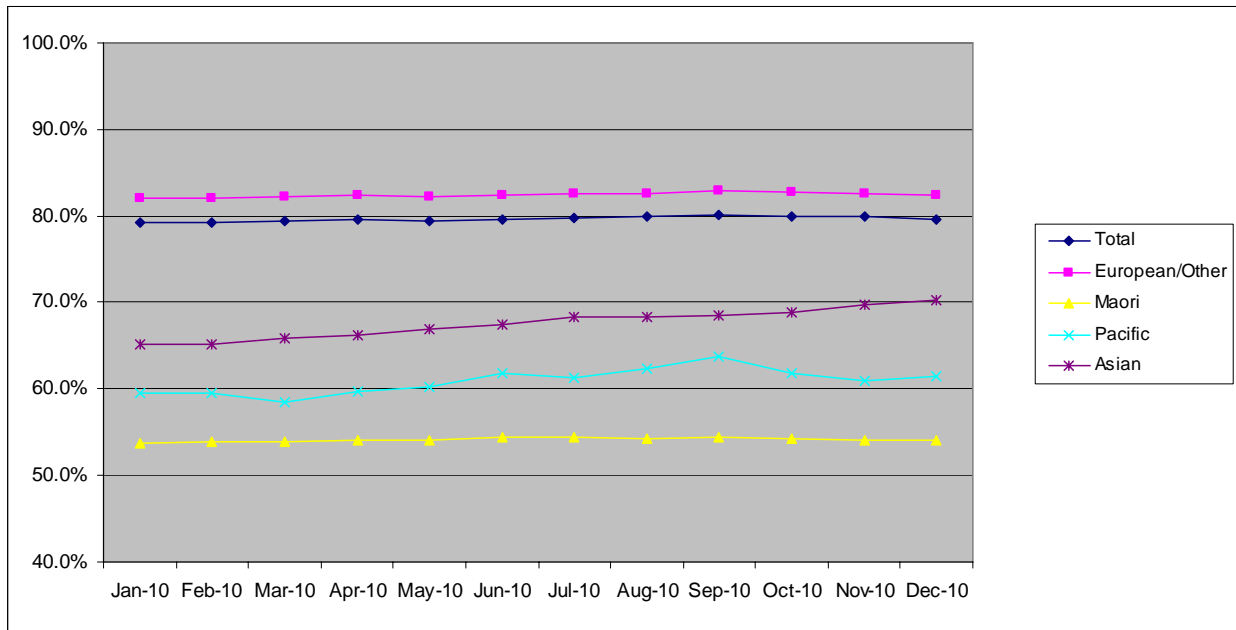


	Population	3 year coverage (n)	3 year coverage (%)
Total	35,688	28,315	79.3%
European/other	31,659	26,016	82.2%
Maori	2,775	1,498	54.0%
Pacific	330	193	58.5%
Asian	924	608	65.8%

8. NCSP summary monthly coverage in the year to 31 December 2010

Nelson Marlborough DHB

Monthly coverage trends for 25-69 year old women screened in the three years to 2010, as a proportion of the hysterectomy adjusted 2006 Census based female population.



Target: 75% for all population groups

How is your DHB performing as at 31 December 2010?

Rank	DHB	December Quarter Performance	Change from previous quarter
1	Taranaki	83.5%	-0.1%
2	Wairarapa	81.2%	0.5%
3	Nelson Marlborough	79.7%	-0.4%
4	Capital and Coast	79.6%	0.1%
5	Otago*	79.4%	-0.4%
6	Hawke's Bay	78.6%	0.1%
7	Bay of Plenty	78.4%	-0.3%
8	Hutt Valley	77.7%	0.2%
9	South Canterbury	77.1%	-1.2%
10	Lakes	77.0%	0.2%
11	Southland*	76.0%	0.1%
12	Canterbury	75.2%	-0.2%
13	Waikato	74.9%	0.2%
14	Waitemata	74.8%	-0.2%
15	Northland	74.3%	-0.3%
16	Mid Central	73.9%	0.2%
17	Whanganui	73.9%	0.6%
18	Auckland	72.7%	0.2%
19	Tairāwhiti	70.9%	-0.3%
20	West Coast	70.0%	-0.3%
21	Counties Manukau	68.2%	-0.5%

* On 1 May 2010 Southland and Otago DHBs merged to create Southern DHB

9. Summary Comments

3 yearly coverage to:	30 June 2011	30 June 2010	change
Total	78.7%	79.6%	-0.9%
European/other	81.3%	82.3%	-1.0%
Maori	54.0%	54.4%	-0.4%
Pacific	62.4%	61.7%	0.7%
Asian	70.5%	67.4%	3.1%
Ranking	4 of 21	3 of 21	-1