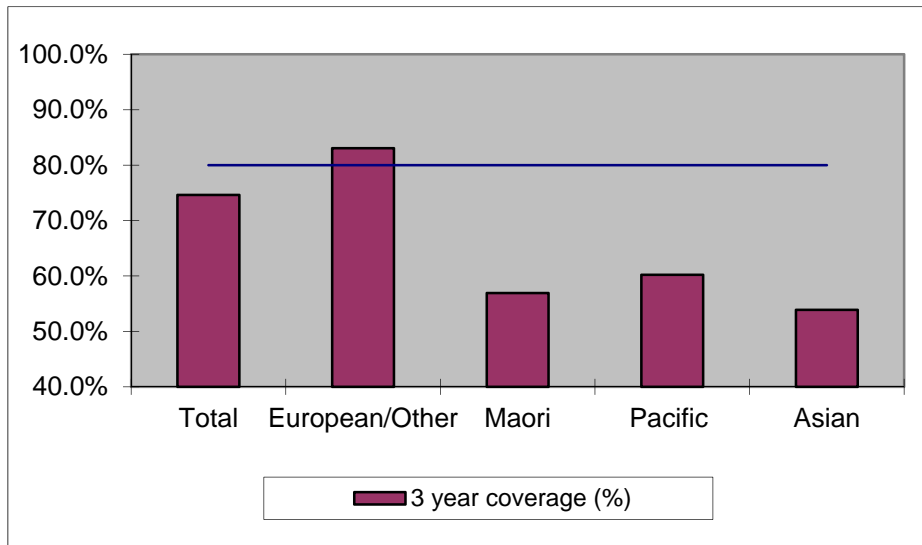


1. NCSP coverage – New Zealand - 30 June 2011 quarter

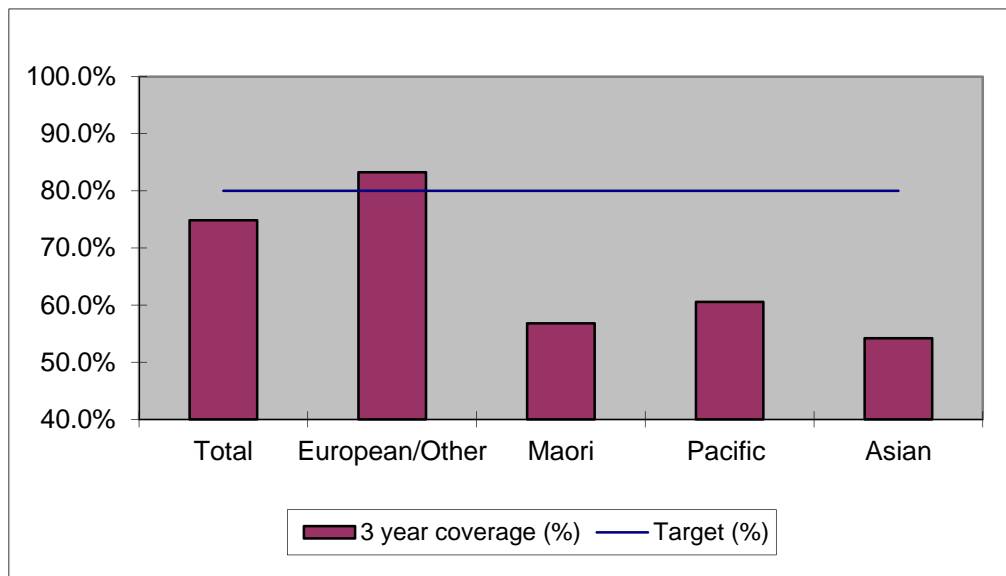
25-69 year old women screened in the three years to 30 June 2011, as a proportion of the hysterectomy adjusted 2006 Census based female population in New Zealand.



	Population	3 year coverage (n)	3 year coverage (%)
Total	1,139,376	850,366	74.6%
European/other	780,228	648,100	83.1%
Maori	148,669	84,641	56.9%
Pacific	66,536	40,065	60.2%
Asian	143,943	77,560	53.9%

2. NCSP coverage – New Zealand –31 March 2011 quarter

25-69 year old women screened in the three years to 31 March 2011, as a proportion of the hysterectomy adjusted 2006 Census based female population in New Zealand.

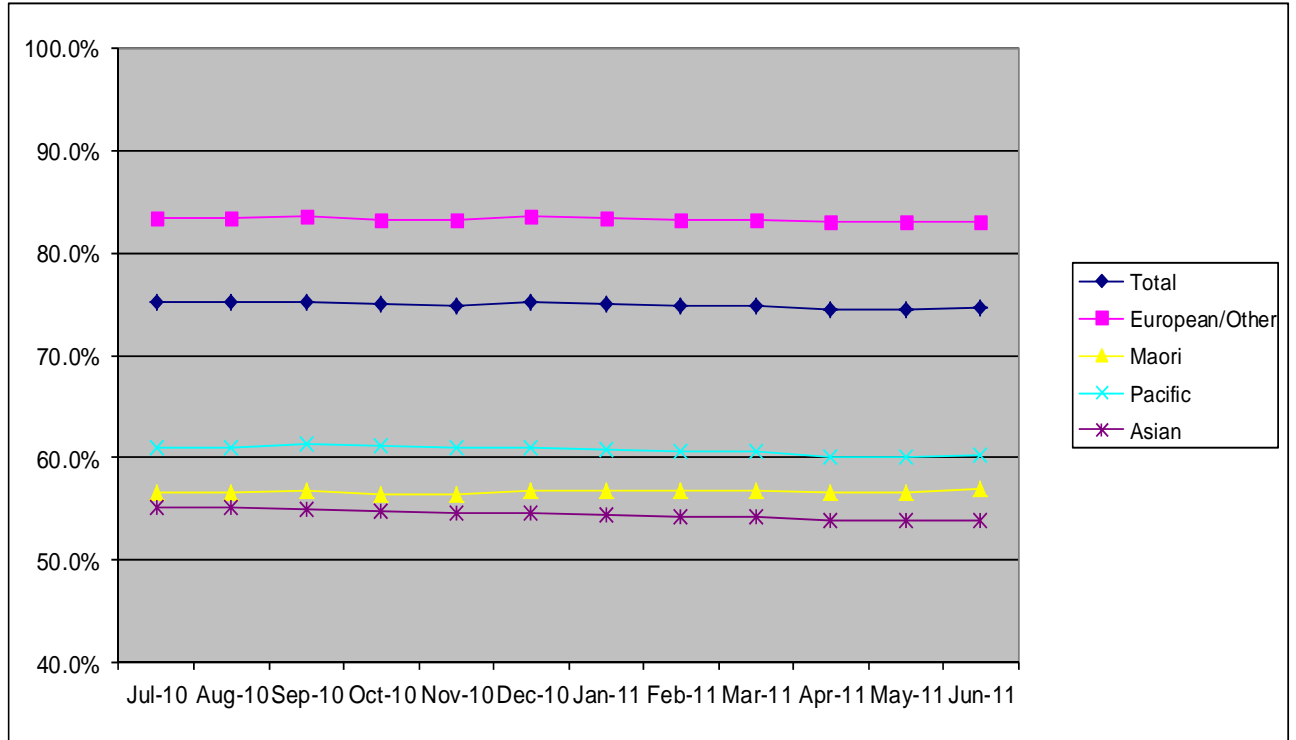


	Population	3 year coverage (n)	3 year coverage (%)
Total	1,136,365	850,492	74.8%
European/other	779,469	648,969	83.3%
Maori	148,188	84,177	56.8%
Pacific	66,201	40,092	60.6%
Asian	142,507	77,254	54.2%

3. NCSP summary monthly coverage in the year to 30 June 2011

New Zealand

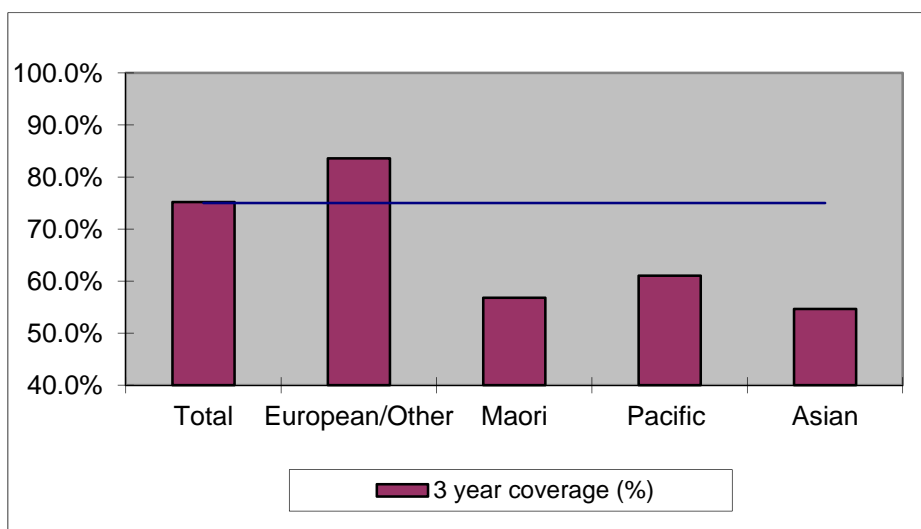
Monthly coverage trends for 25-69 year old women screened in the three years to 30 June 2011, as a proportion of the hysterectomy adjusted 2006 Census based female population.



Target: 75% for all population groups to 31 December 2010 and 80% for all population groups from 1 January 2011.

4. NCSP coverage - New Zealand - 31 December 2010 quarter

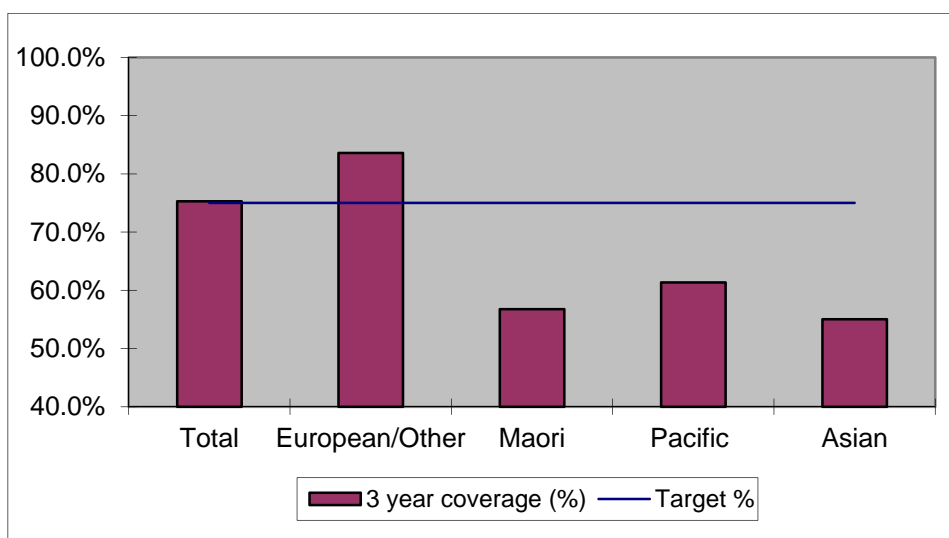
25-69 year old women screened in the three years to 31 December 2010, as a proportion of the hysterectomy adjusted 2006 Census based female population in New Zealand.



	Population	3 year coverage (n)	3 year coverage (%)
Total	1,133,331	851,969	75.2%
European/other	778,706	650,803	83.6%
Maori	147,686	83,874	56.8%
Pacific	65,865	40,205	61.0%
Asian	141,074	77,087	54.6%

5. NCSP coverage – New Zealand - 30 September 2010 quarter

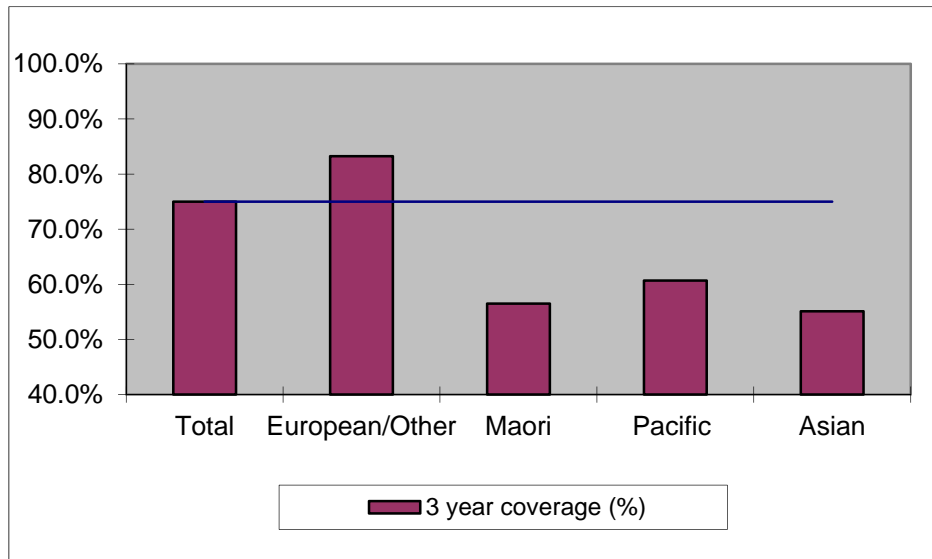
25-69 year old women screened in the three years to 30 September 2010, as a proportion of the hysterectomy adjusted 2006 Census based female population in New Zealand.



	Population	3 year coverage (n)	3 year coverage (%)
Total	1,130,198	850,792	75.3%
European/other	777,908	650,213	83.6%
Maori	147,178	83,551	56.8%
Pacific	65,499	40,190	61.4%
Asian	139,613	76,838	55.0%

6. NCSP coverage - New Zealand - 30 June 2010 quarter

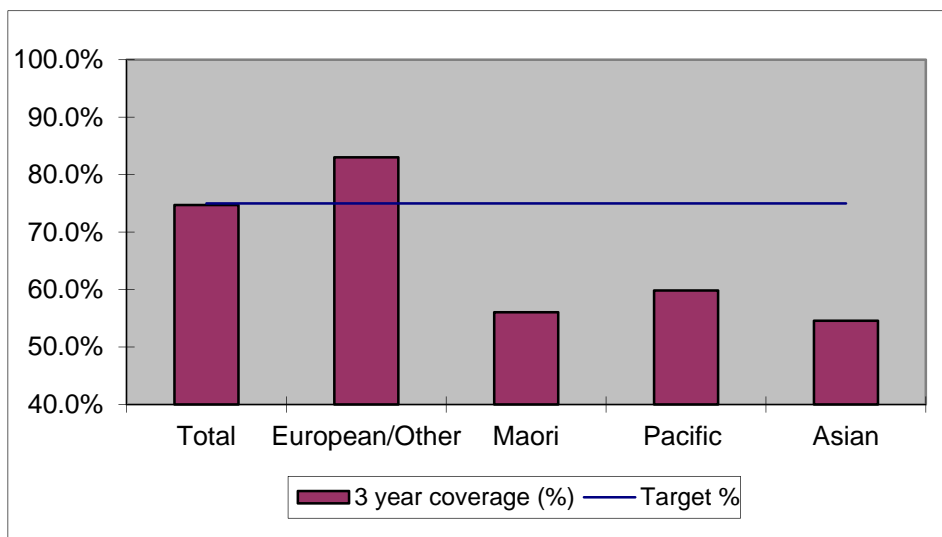
25-69 year old women screened in the three years to 30 June 2010, as a proportion of the hysterectomy adjusted 2006 Census based female population in New Zealand.



	Population	3 year coverage (n)	3 year coverage (%)
Total	1,127,009	845,346	75.0%
European/other	777,103	646,870	83.2%
Maori	146,637	82,838	56.5%
Pacific	65,130	39,523	60.7%
Asian	138,139	76,115	55.1%

7. NCSP coverage - New Zealand - 31 March 2010 quarter

25-69 year old women screened in the three years to 31 March 2010, as a proportion of the hysterectomy adjusted 2006 Census based female population in New Zealand.

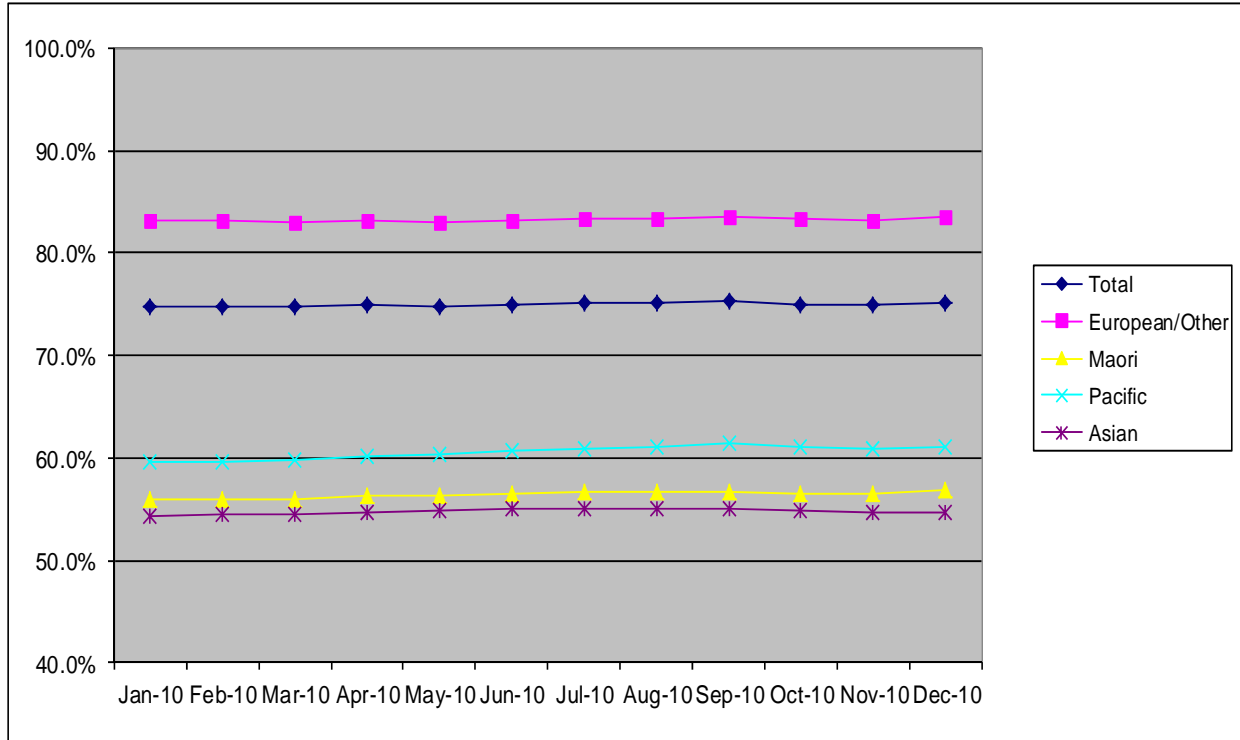


	Population	3 year coverage (n)	3 year coverage (%)
Total	1,123,396	839,231	74.7%
European/other	775,781	643,948	83.0%
Maori	146,165	81,915	56.0%
Pacific	64,826	38,793	59.8%
Asian	136,624	74,575	54.6%

8. NCSP summary monthly coverage in the year to 31 December 2010

New Zealand

Monthly coverage trends for 25-69 year old women screened in the three years to 2010, as a proportion of the hysterectomy adjusted 2006 Census based female population.



Target: 75% for all population groups

9. Summary Comments

3 yearly coverage to:	30 June 2011	30 June 2010	change
Total	74.6%	75.0%	-0.4%
European/other	83.1%	83.2%	-0.1%
Maori	56.9%	56.5%	0.4%
Pacific	60.2%	60.7%	-0.5%
Asian	53.9%	55.1%	-1.2%