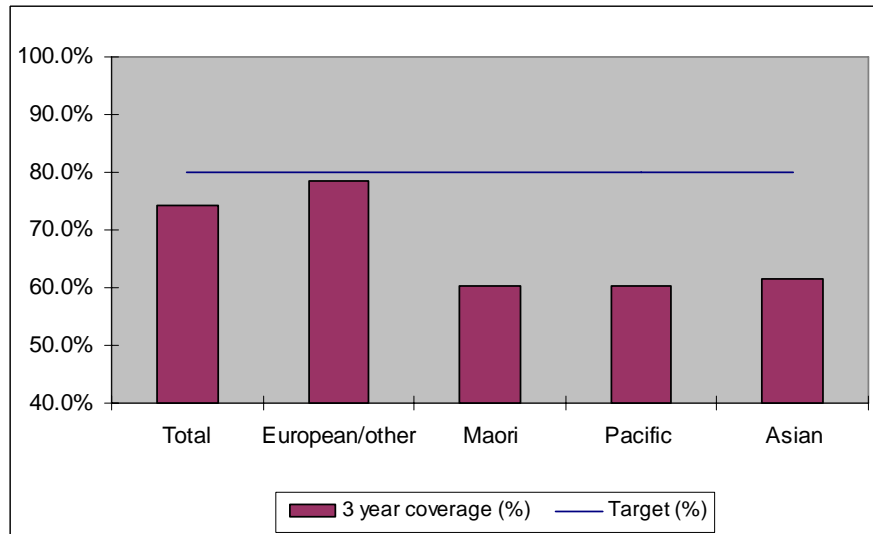


1. NCSP coverage - MidCentral DHB Region - 30 June 2011 quarter

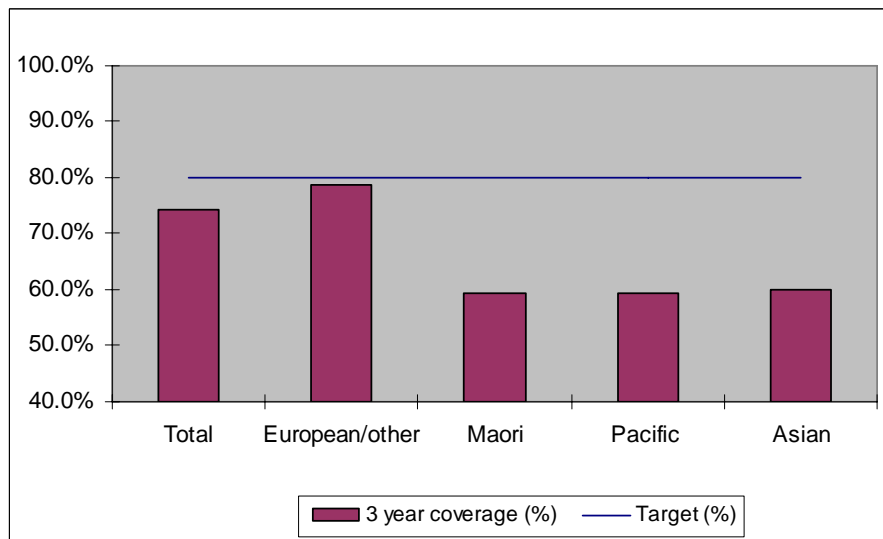
25-69 year old women screened in the three years to 30 June 2011, as a proportion of the hysterectomy adjusted 2006 Census based female population in the MidCentral DHB Region.



	Population	3 year coverage (n)	3 year coverage (%)
Total	41,146	30,551	74.3%
European/other	31,284	24,580	78.6%
Maori	6,648	4,004	60.2%
Pacific	867	522	60.2%
Asian	2,347	1,445	61.6%

2. NCSP coverage - MidCentral DHB Region -31 March 2011 quarter

25-69 year old women screened in the three years to 31 March 2011, as a proportion of the hysterectomy adjusted 2006 Census based female population in the MidCentral DHB Region.

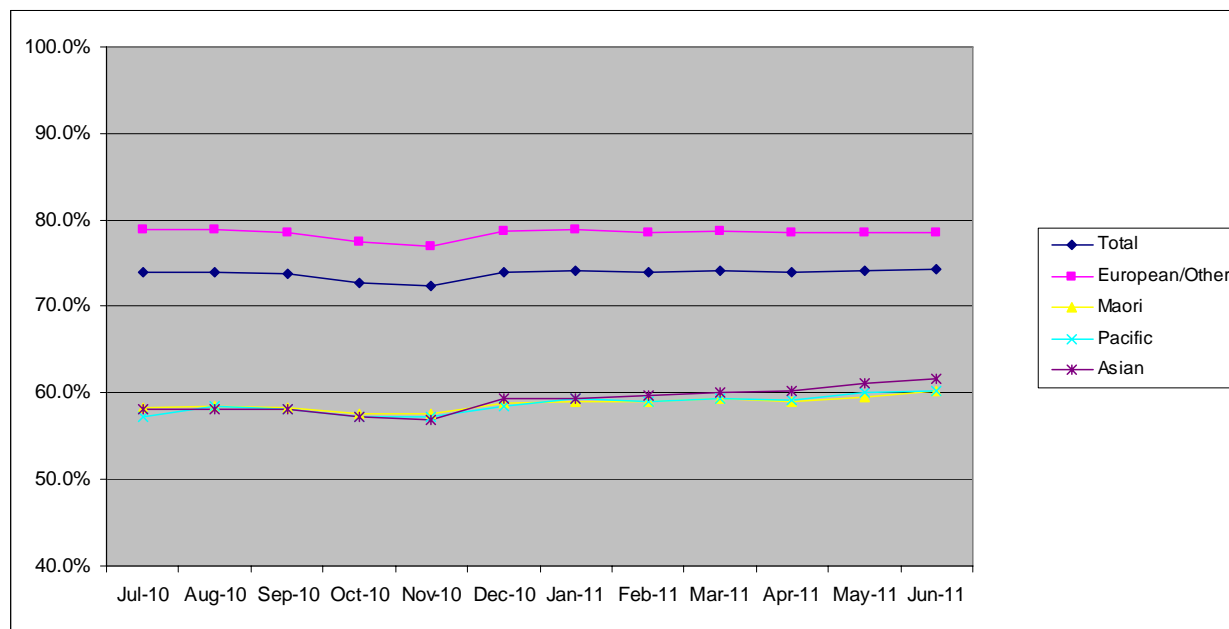


	Population	3 year coverage (n)	3 year coverage (%)
Total	41,123	30,487	74.1%
European/other	31,301	24,639	78.7%
Maori	6,624	3,932	59.4%
Pacific	863	512	59.3%
Asian	2,335	1,404	60.1%

3. NCSP summary monthly coverage in the year to 30 June 2011

MidCentral DHB

Monthly coverage trends for 25-69 year old women screened in the three years to 30 June 2011, as a proportion of the hysterectomy adjusted 2006 Census based female population.



Target: 75% for all population groups to 31 December 2010 and 80% for all population groups from 1 January 2011.

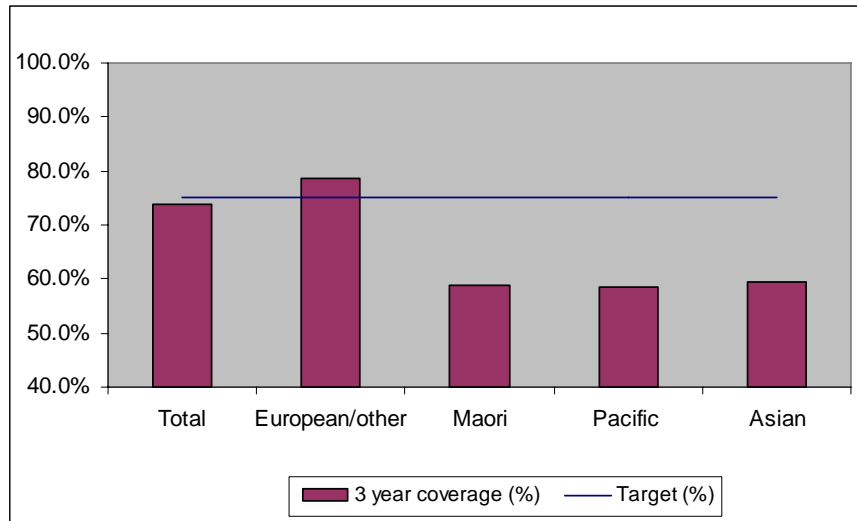
How was your DHB performing as at 30 June 2011?

Rank	DHB	December Quarter Performance	Change from previous quarter
1	Taranaki	82.9%	-0.1%
2	Wairarapa	81.7%	0.1%
3	Capital and Coast	79.3%	-0.3%
4	Nelson Marlborough	78.7%	-0.2%
5	Hawke's Bay	78.4%	-0.4%
6	Otago*	78.3%	-0.5%
7	Bay of Plenty	77.3%	-0.4%
8=	Hutt Valley	76.9%	-0.4%
8=	Lakes	76.9%	0.0%
10	Southland*	75.3%	-0.3%
11	Northland	75.1%	0.7%
12	Waikato	74.9%	0.1%
13	Whanganui	74.6%	0.6%
14	Tairāwhiti	74.5%	1.0%
15	Mid Central	74.3%	0.2%
16	Waitemata	74.0%	-0.5%
17	Canterbury	73.5%	-0.4%
18	Auckland	73.1%	0.3%
19	South Canterbury	72.9%	-2.2%
20	West Coast	68.5%	-1.0%
21	Counties Manukau	67.3%	-0.5%

* On 1 May 2010 Southland and Otago DHBs merged to create Southern DHB.

4. NCSP coverage - MidCentral DHB Region - 31 December 2010 quarter

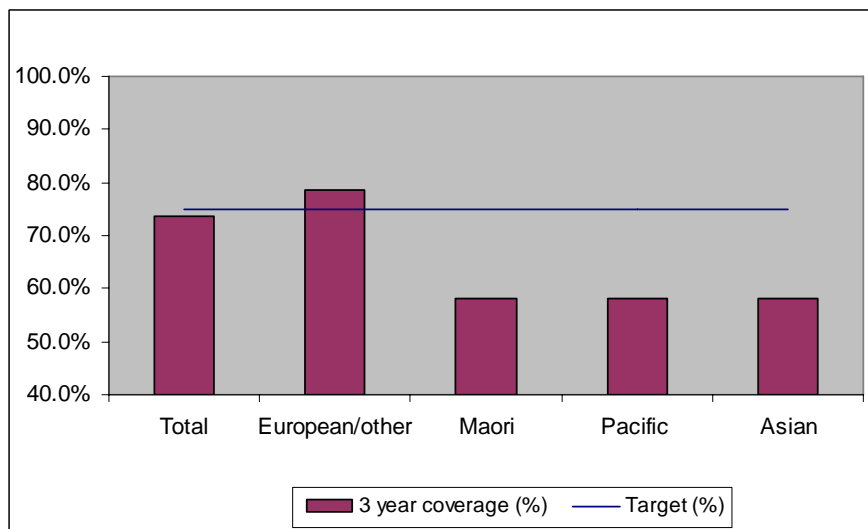
25-69 year old women screened in the three years to 31 December 2010, as a proportion of the hysterectomy adjusted 2006 Census based female population in the MidCentral DHB Region.



	Population	3 year coverage (n)	3 year coverage (%)
Total	41,099	30,381	73.9%
European/other	31,317	24,623	78.6%
Maori	6,601	3,878	58.7%
Pacific	858	501	58.4%
Asian	2,323	1,379	59.4%

5. NCSP coverage - MidCentral DHB Region - 30 September 2010 quarter

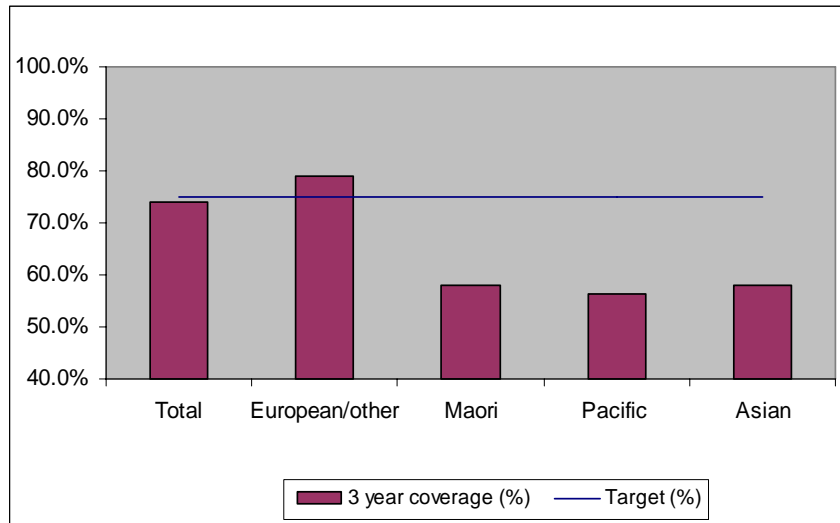
25-69 year old women screened in the three years to 30 September 2010, as a proportion of the hysterectomy adjusted 2006 Census based female population in the MidCentral DHB Region.



	Population	3 year coverage (n)	3 year coverage (%)
Total	41,074	30,278	73.7%
European/other	31,334	24,607	78.5%
Maori	6,577	3,834	58.3%
Pacific	853	496	58.1%
Asian	2,310	1,341	58.1%

6. NCSP coverage - MidCentral DHB Region - 30 June 2010 quarter

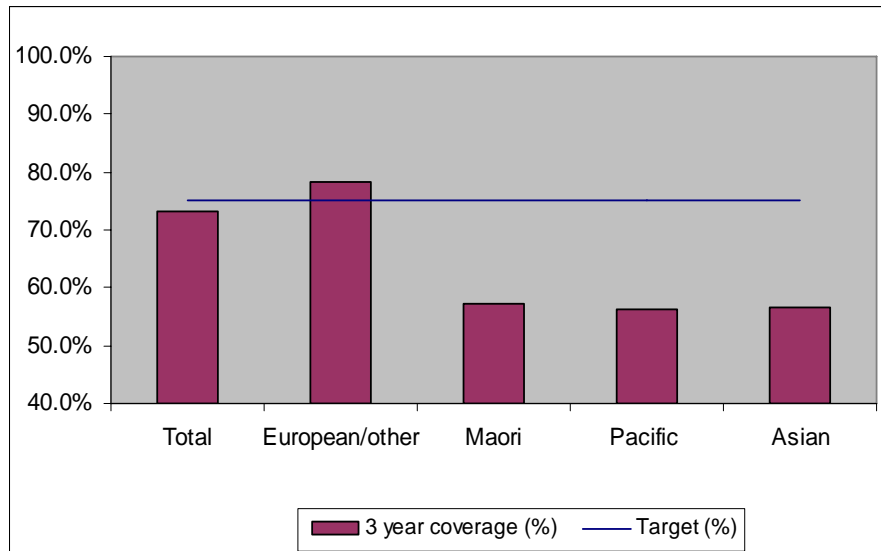
25-69 year old women screened in the three years to 30 June 2010, as a proportion of the hysterectomy adjusted 2006 Census based female population in the MidCentral DHB Region.



	Population	3 year coverage (n)	3 year coverage (%)
Total	41,045	30,328	73.9%
European/other	31,349	24,718	78.8%
Maori	6,551	3,800	58.0%
Pacific	848	478	56.4%
Asian	2,297	1,332	58.0%

7. NCSP coverage - MidCentral DHB Region -31 March 2010 quarter

25-69 year old women screened in the three years to 31 March 2010, as a proportion of the hysterectomy adjusted 2006 Census based female population in the MidCentral DHB Region.

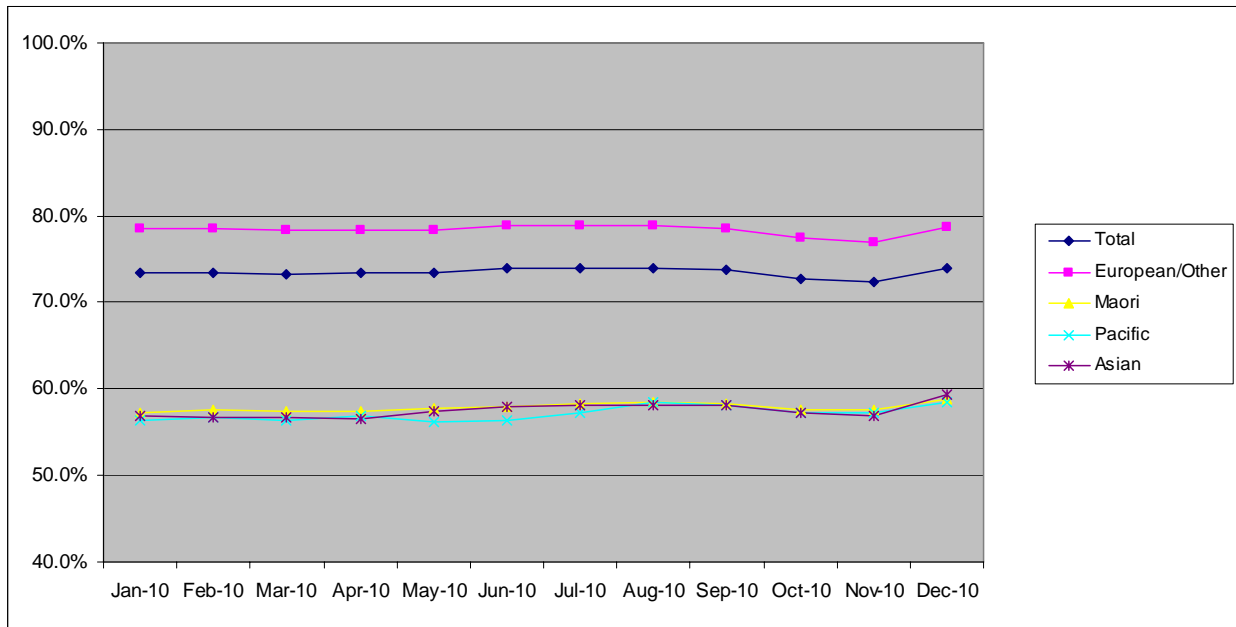


	Population	3 year coverage (n)	3 year coverage (%)
Total	40,995	30,057	73.3%
European/other	31,348	24,545	78.3%
Maori	6,521	3,742	57.4%
Pacific	845	476	56.3%
Asian	2,281	1,294	56.7%

8. NCSP summary monthly coverage in the year to 31 December 2010

MidCentral DHB

Monthly coverage trends for 25-69 year old women screened in the three years to 2010, as a proportion of the hysterectomy adjusted 2006 Census based female population.



Target: 75% for all population groups

How is your DHB performing as at 31 December 2010?

Rank	DHB	December Quarter Performance	Change from previous quarter
1	Taranaki	83.5%	-0.1%
2	Wairarapa	81.2%	0.5%
3	Nelson Marlborough	79.7%	-0.4%
4	Capital and Coast	79.6%	0.1%
5	Otago*	79.4%	-0.4%
6	Hawke's Bay	78.6%	0.1%
7	Bay of Plenty	78.4%	-0.3%
8	Hutt Valley	77.7%	0.2%
9	South Canterbury	77.1%	-1.2%
10	Lakes	77.0%	0.2%
11	Southland*	76.0%	0.1%
12	Canterbury	75.2%	-0.2%
13	Waikato	74.9%	0.2%
14	Waitemata	74.8%	-0.2%
15	Northland	74.3%	-0.3%
16	Mid Central	73.9%	0.2%
17	Whanganui	73.9%	0.6%
18	Auckland	72.7%	0.2%
19	Tairāwhiti	70.9%	-0.3%
20	West Coast	70.0%	-0.3%
21	Counties Manukau	68.2%	-0.5%

* On 1 May 2010 Southland and Otago DHBs merged to create Southern DHB.

9. Summary Comments

3 yearly coverage to:	30 June 2011	30 June 2010	change
Total	74.3%	73.9%	0.4%
European/other	78.6%	78.8%	-0.2%
Maori	60.2%	58.0%	2.2%
Pacific	60.2%	56.4%	3.8%
Asian	61.6%	58.0%	3.6%
Ranking	15 of 21	17 of 21	2