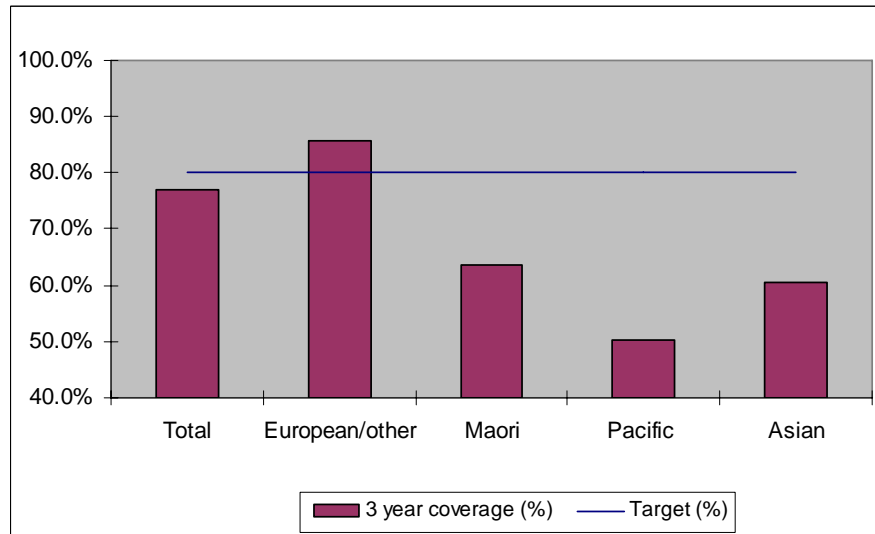


## 1. NCSP coverage - Lakes DHB Region - 30 June 2011 quarter

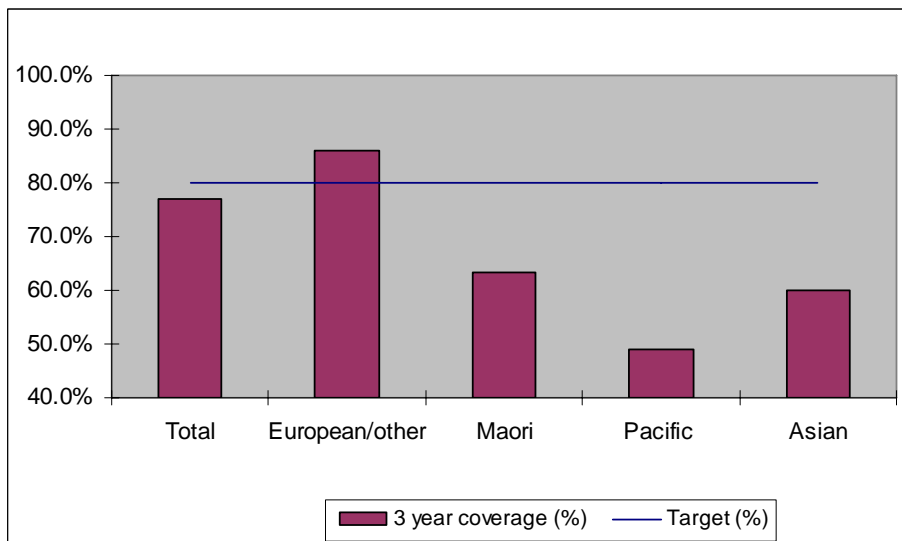
25-69 year old women screened in the three years to 30 June 2011, as a proportion of the hysterectomy adjusted 2006 Census based female population in the Lakes DHB Region.



	Population	3 year coverage (n)	3 year coverage (%)
<b>Total</b>	26,186	20,130	76.9%
<b>European/other</b>	16,211	13,906	85.8%
<b>Maori</b>	8,074	5,136	63.6%
<b>Pacific</b>	604	304	50.3%
<b>Asian</b>	1,297	784	60.4%

## 2. NCSP coverage - Lakes DHB Region -31 March 2011 quarter

25-69 year old women screened in the three years to 31 March 2011, as a proportion of the hysterectomy adjusted 2006 Census based female population in the Lakes DHB Region.

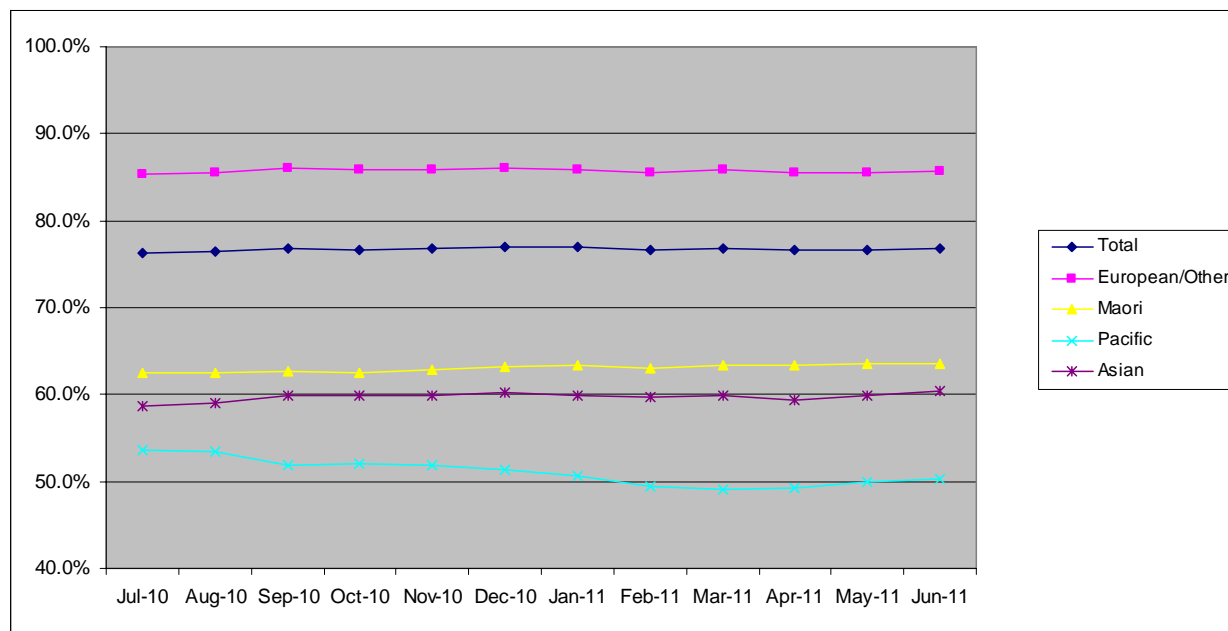


	Population	3 year coverage (n)	3 year coverage (%)
<b>Total</b>	26,172	20,111	76.8%
<b>European/other</b>	16,226	13,938	85.9%
<b>Maori</b>	8,064	5,110	63.4%
<b>Pacific</b>	599	294	49.1%
<b>Asian</b>	1,283	769	59.9%

### 3. NCSP summary monthly coverage in the year to 30 June 2011

#### Lakes DHB

Monthly coverage trends for 25-69 year old women screened in the three years to 30 June 2011, as a proportion of the hysterectomy adjusted 2006 Census based female population.



Target: 75% for all population groups to 31 December and 80% for all population groups from 1 January 2011.

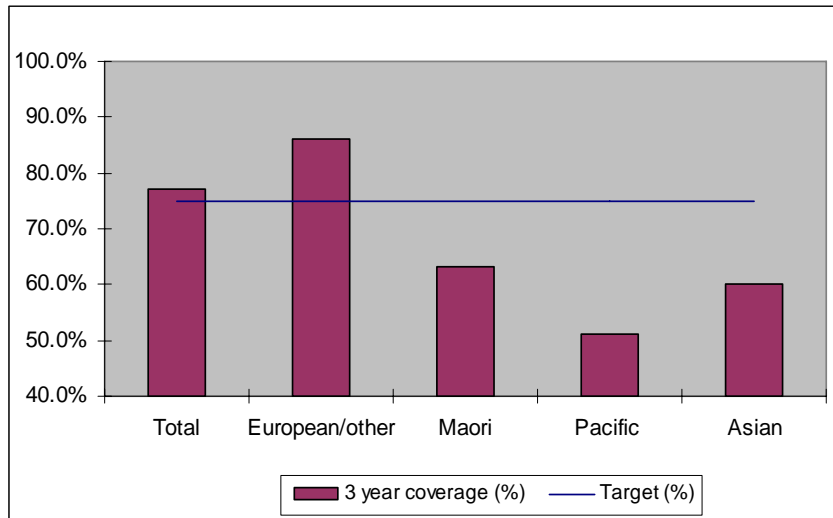
#### How was your DHB performing as at 30 June 2011?

Rank	DHB	December Quarter Performance	Change from previous quarter
1	Taranaki	82.9%	-0.1%
2	Wairarapa	81.7%	0.1%
3	Capital and Coast	79.3%	-0.3%
4	Nelson Marlborough	78.7%	-0.2%
5	Hawke's Bay	78.4%	-0.4%
6	Otago*	78.3%	-0.5%
7	Bay of Plenty	77.3%	-0.4%
8=	Hutt Valley	76.9%	-0.4%
<b>8=</b>	<b>Lakes</b>	<b>76.9%</b>	<b>0.1%</b>
10	Southland*	75.3%	-0.3%
11	Northland	75.1%	0.7%
12	Waikato	74.9%	0.1%
13	Whanganui	74.6%	0.6%
14	Tairāwhiti	74.5%	1.0%
15	Mid Central	74.3%	0.2%
16	Waitemata	74.0%	-0.5%
17	Canterbury	73.5%	-0.4%
18	Auckland	73.1%	0.3%
19	South Canterbury	72.9%	-2.2%
20	West Coast	68.5%	-1.0%
21	Counties Manukau	67.3%	-0.5%

\* On 1 May 2010 Southland and Otago DHBs merged to create Southern DHB.

#### 4. NCSP coverage - Lakes DHB Region - 31 December 2010 quarter

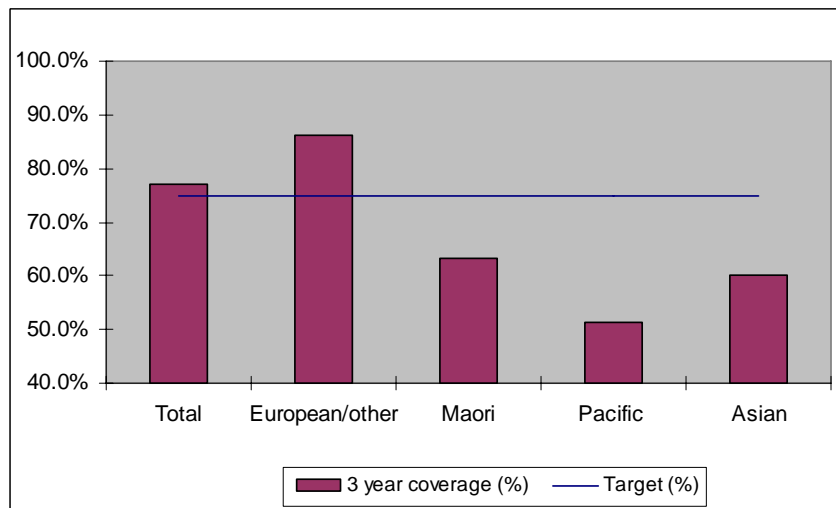
25-69 year old women screened in the three years to 31 December 2010, as a proportion of the hysterectomy adjusted 2006 Census based female population in the Lakes DHB Region.



	Population	3 year coverage (n)	3 year coverage (%)
<b>Total</b>	26,154	20,138	77.0%
<b>European/other</b>	16,243	13,985	86.1%
<b>Maori</b>	8,052	5,086	63.2%
<b>Pacific</b>	591	303	51.3%
<b>Asian</b>	1,268	764	60.3%

#### 5. NCSP coverage - Lakes DHB Region - 30 September 2010 quarter

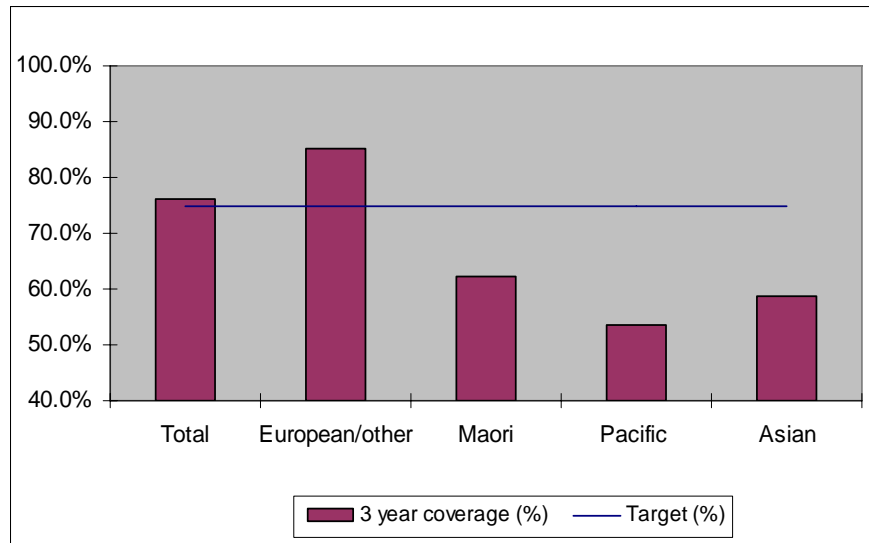
25-69 year old women screened in the three years to 30 September 2010, as a proportion of the hysterectomy adjusted 2006 Census based female population in the Lakes DHB Region.



	Population	3 year coverage (n)	3 year coverage (%)
<b>Total</b>	26,135	20,070	76.8%
<b>European/other</b>	16,256	13,982	86.0%
<b>Maori</b>	8,041	5,035	62.6%
<b>Pacific</b>	584	303	51.9%
<b>Asian</b>	1,254	750	59.8%

## 6. NCSP coverage - Lakes DHB Region - 30 June 2010 quarter

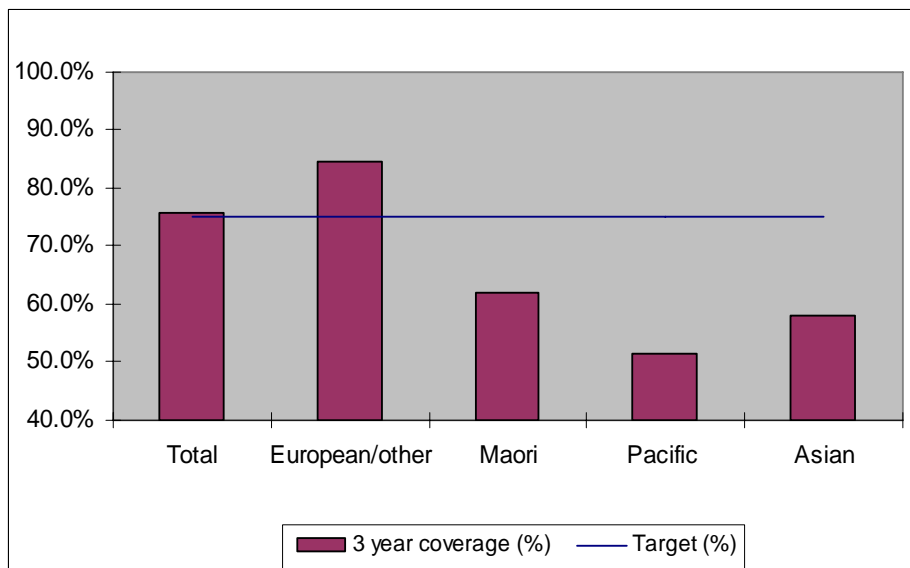
25-69 year old women screened in the three years to 30 June 2010, as a proportion of the hysterectomy adjusted 2006 Census based female population in the Lakes DHB Region.



	Population	3 year coverage (n)	3 year coverage (%)
<b>Total</b>	26,110	19,893	76.2%
<b>European/other</b>	16,270	13,854	85.2%
<b>Maori</b>	8,027	5,005	62.4%
<b>Pacific</b>	576	309	53.6%
<b>Asian</b>	1,237	725	58.6%

## 7. NCSP coverage - Lakes DHB Region - 31 March 2010 quarter

25-69 year old women screened in the three years to 31 March 2010, as a proportion of the hysterectomy adjusted 2006 Census based female population in the Lakes DHB Region.

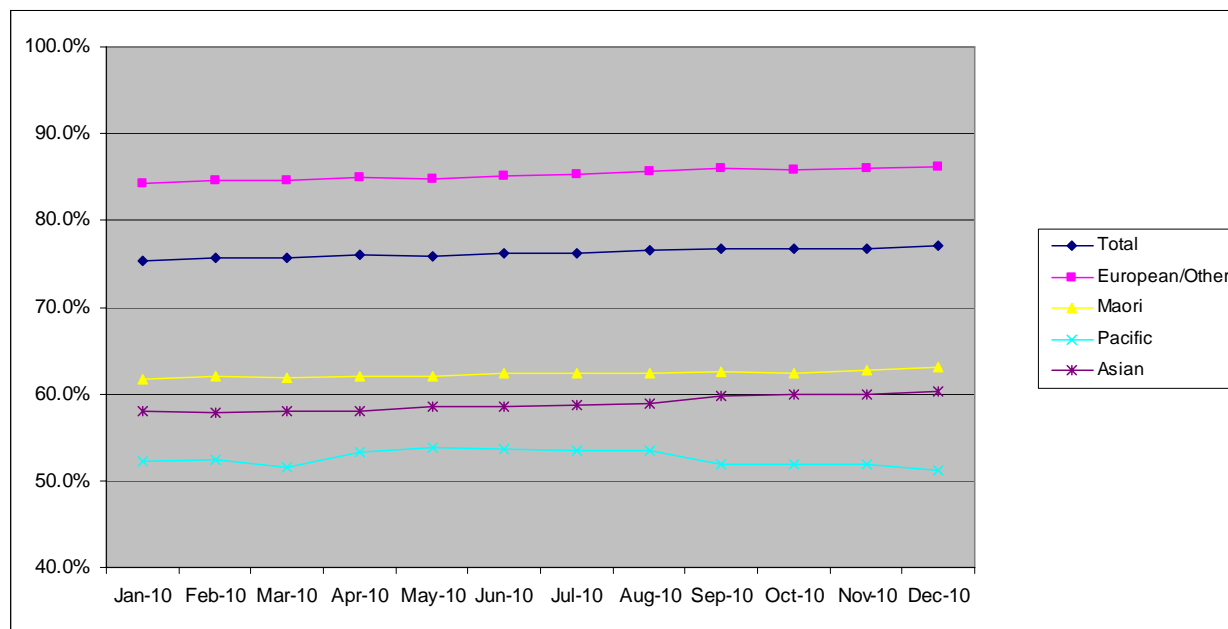


	Population	3 year coverage (n)	3 year coverage (%)
<b>Total</b>	26,117	19,769	75.7%
<b>European/other</b>	16,291	13,796	84.7%
<b>Maori</b>	8,013	4,958	61.9%
<b>Pacific</b>	576	297	51.6%
<b>Asian</b>	1,237	718	58.0%

## 8. NCSP summary monthly coverage in the year to 31 December 2010

### Lakes DHB

Monthly coverage trends for 25-69 year old women screened in the three years to 2010, as a proportion of the hysterectomy adjusted 2006 Census based female population.



Target: 75% for all population groups

### How is your DHB performing as at 31 December 2010?

Rank	DHB	December Quarter Performance	Change from previous quarter
1	Taranaki	83.5%	-0.1%
2	Wairarapa	81.2%	0.5%
3	Nelson Marlborough	79.7%	-0.4%
4	Capital and Coast	79.6%	0.1%
5	Otago*	79.4%	-0.4%
6	Hawke's Bay	78.6%	0.1%
7	Bay of Plenty	78.4%	-0.3%
8	Hutt Valley	77.7%	0.2%
9	South Canterbury	77.1%	-1.2%
<b>10</b>	<b>Lakes</b>	<b>77.0%</b>	<b>0.2%</b>
11	Southland*	76.0%	0.1%
12	Canterbury	75.2%	-0.2%
13	Waikato	74.9%	0.2%
14	Waitemata	74.8%	-0.2%
15	Northland	74.3%	-0.3%
16	Mid Central	73.9%	0.2%
17	Whanganui	73.9%	0.6%
18	Auckland	72.7%	0.2%
19	Tairāwhiti	70.9%	-0.3%
20	West Coast	70.0%	-0.3%
21	Counties Manukau	68.2%	-0.5%

\* On 1 May 2010 Southland and Otago DHBs merged to create Southern DHB.

## 9. Summary Comments

<b>3 yearly coverage to:</b>	<b>30 June 2011</b>	<b>30 June 2010</b>	<b>change</b>
<b>Total</b>	76.9%	76.2%	0.7%
<b>European/other</b>	85.8%	85.2%	0.6%
<b>Maori</b>	63.6%	62.4%	1.2%
<b>Pacific</b>	50.3%	53.6%	-3.3%
<b>Asian</b>	60.4%	58.6%	1.8%
<b>Ranking</b>	8 = of 21	10 of 21	2