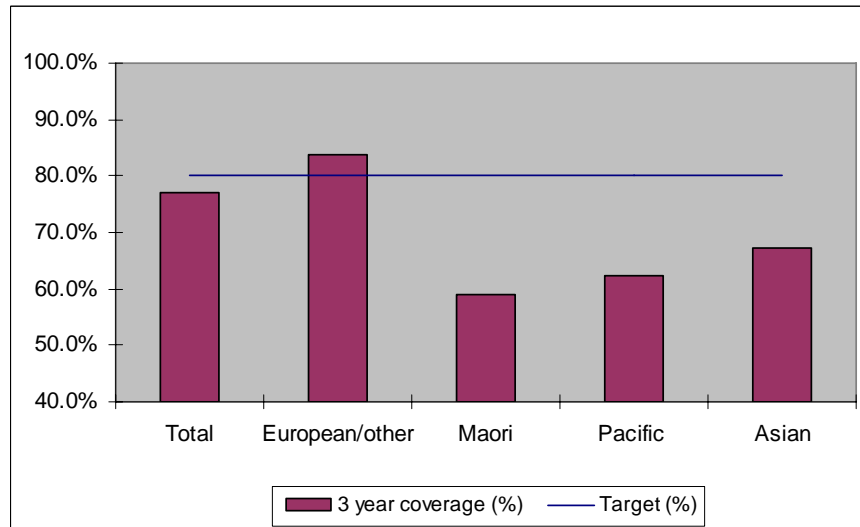


## 1. NCSP coverage - Hutt Valley DHB Region - 30 June 2011 quarter

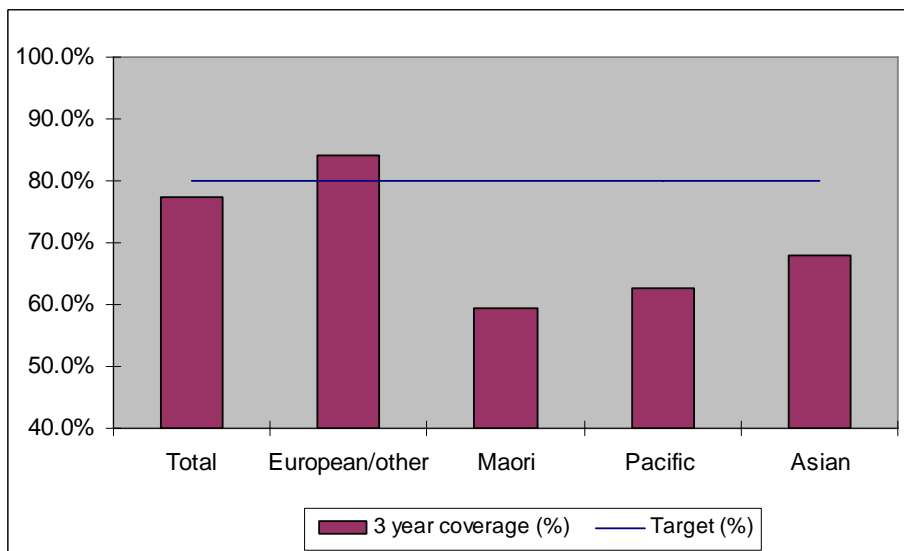
25-69 year old women screened in the three years to 30 June 2011, as a proportion of the hysterectomy adjusted 2006 Census based female population in the Hutt Valley DHB Region.



	Population	3 year coverage (n)	3 year coverage (%)
<b>Total</b>	37,093	28,520	76.9%
<b>European/other</b>	25,243	21,153	83.8%
<b>Maori</b>	5,605	3,301	58.9%
<b>Pacific</b>	2,799	1,745	62.3%
<b>Asian</b>	3,446	2,321	67.4%

## 2. NCSP coverage - Hutt Valley DHB Region - 31 March 2011 quarter

25-69 year old women screened in the three years to 31 March 2011, as a proportion of the hysterectomy adjusted 2006 Census based female population in the Hutt Valley DHB Region.

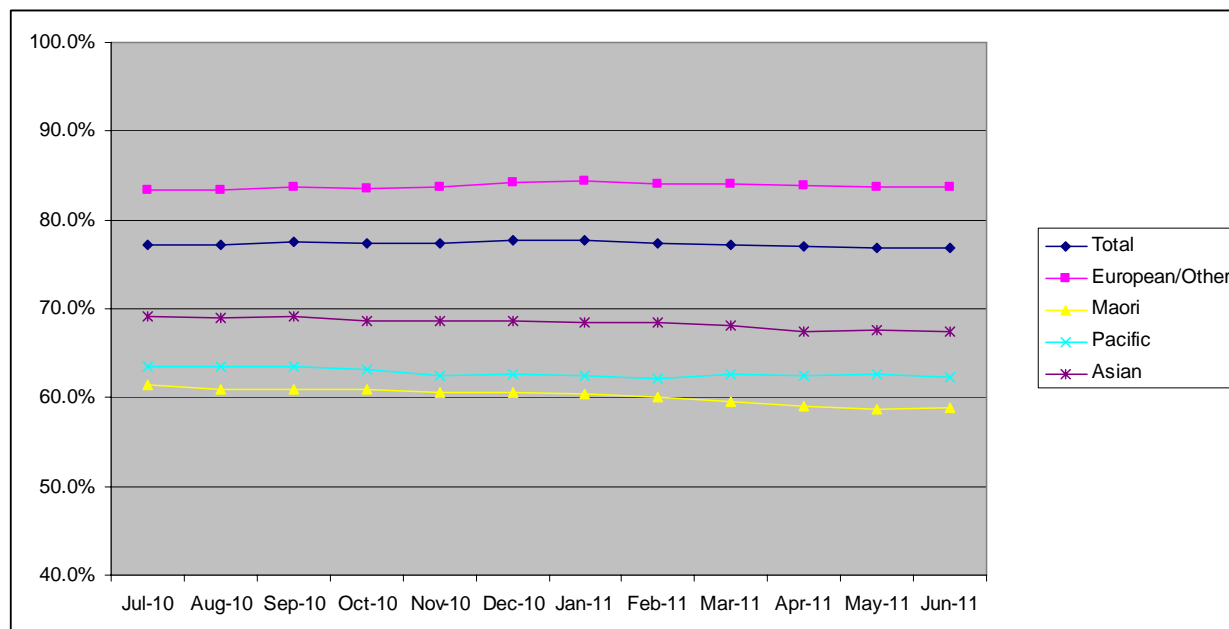


	Population	3 year coverage (n)	3 year coverage (%)
<b>Total</b>	37,085	28,661	77.3%
<b>European/other</b>	25,286	21,259	84.1%
<b>Maori</b>	5,585	3,325	59.5%
<b>Pacific</b>	2,788	1,745	62.6%
<b>Asian</b>	3,426	2,332	68.1%

### 3. NCSP summary monthly coverage in the year to 30 June 2011

#### Hutt Valley DHB

Monthly coverage trends for 25-69 year old women screened in the three years to 30 June 2011, as a proportion of the hysterectomy adjusted 2006 Census based female population.



Target: 75% for all population groups to 31 December 2010 and 80% for all population groups from 1 January 2011.

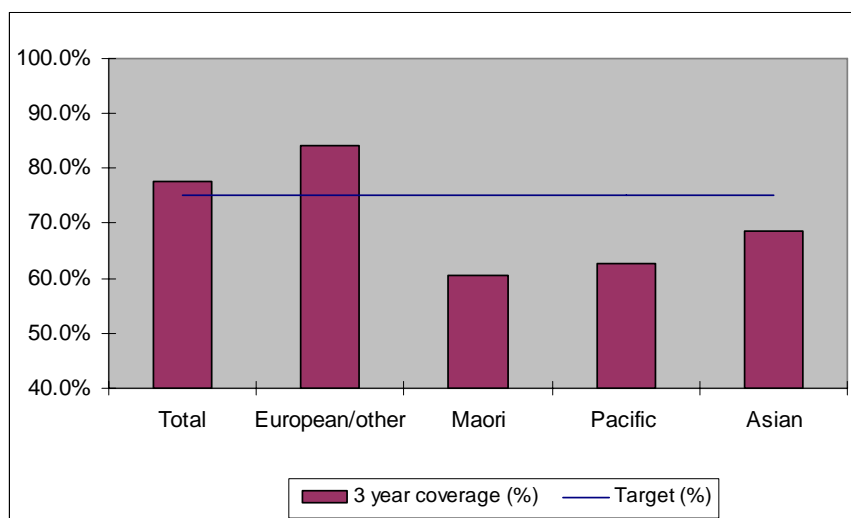
#### How was your DHB performing as at 30 June 2011?

Rank	DHB	December Quarter Performance	Change from previous quarter
1	Taranaki	82.9%	-0.1%
2	Wairarapa	81.7%	0.1%
3	Capital and Coast	79.3%	-0.3%
4	Nelson Marlborough	78.7%	-0.2%
5	Hawke's Bay	78.4%	-0.4%
6	Otago*	78.3%	-0.5%
7	Bay of Plenty	77.3%	-0.4%
<b>8=</b>	<b>Hutt Valley</b>	<b>76.9%</b>	<b>-0.4%</b>
8=	Lakes	76.9%	0.0%
10	Southland*	75.3%	-0.3%
11	Northland	75.1%	0.7%
12	Waikato	74.9%	0.1%
13	Whanganui	74.6%	0.6%
14	Tairāwhiti	74.5%	1.0%
15	Mid Central	74.3%	0.2%
16	Waitemata	74.0%	-0.5%
17	Canterbury	73.5%	-0.4%
18	Auckland	73.1%	0.3%
19	South Canterbury	72.9%	-2.2%
20	West Coast	68.5%	-1.0%
21	Counties Manukau	67.3%	-0.5%

\* On 1 May 2010 Southland and Otago DHBs merged to create Southern DHB.

#### 4. NCSP coverage - Hutt Valley DHB Region - 31 December 2010 quarter

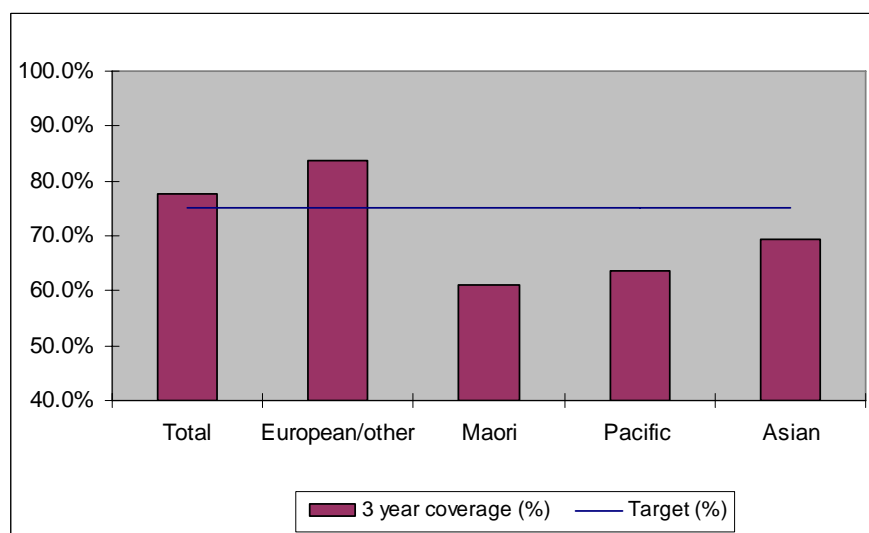
25-69 year old women screened in the three years to 31 December 2010, as a proportion of the hysterectomy adjusted 2006 Census based female population in the Hutt Valley DHB Region.



	Population	3 year coverage (n)	3 year coverage (%)
<b>Total</b>	37,074	28,793	77.7%
<b>European/other</b>	25,326	21,343	84.3%
<b>Maori</b>	5,564	3,374	60.6%
<b>Pacific</b>	2,775	1,738	62.6%
<b>Asian</b>	3,409	2,338	68.6%

#### 5. NCSP coverage - Hutt Valley DHB Region - 30 September 2010 quarter

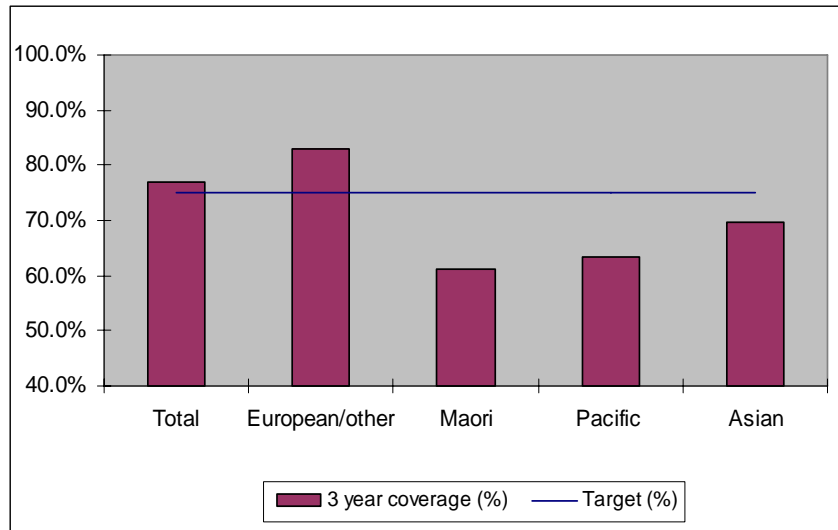
25-69 year old women screened in the three years to 30 September 2010, as a proportion of the hysterectomy adjusted 2006 Census based female population in the Hutt Valley DHB Region.



	Population	3 year coverage (n)	3 year coverage (%)
<b>Total</b>	37,060	28,724	77.5%
<b>European/other</b>	25,365	21,244	83.8%
<b>Maori</b>	5,543	3,380	61.0%
<b>Pacific</b>	2,764	1,755	63.5%
<b>Asian</b>	3,388	2,345	69.2%

### 6. NCSP coverage - Hutt Valley DHB Region - 30 June 2010 quarter

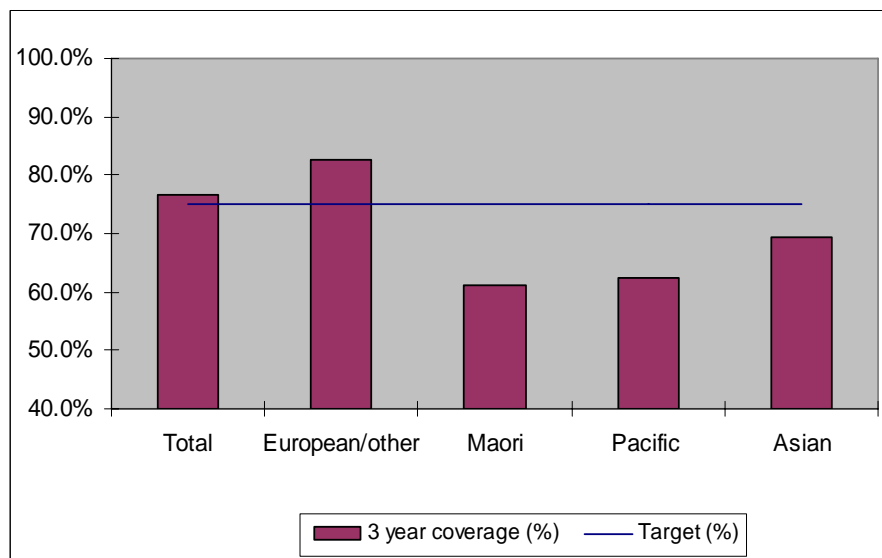
25-69 year old women screened in the three years to 30 June 2010, as a proportion of the hysterectomy adjusted 2006 Census based female population in the Hutt Valley DHB Region.



	Population	3 year coverage (n)	3 year coverage (%)
<b>Total</b>	37,041	28,514	77.0%
<b>European/other</b>	25,404	21,047	82.8%
<b>Maori</b>	5,520	3,375	61.1%
<b>Pacific</b>	2,749	1,746	63.5%
<b>Asian</b>	3,368	2,346	69.7%

### 7. NCSP coverage - Hutt Valley DHB Region - 31 March 2010 quarter

25-69 year old women screened in the three years to 31 March 2010, as a proportion of the hysterectomy adjusted 2006 Census based female population in the Hutt Valley DHB Region.

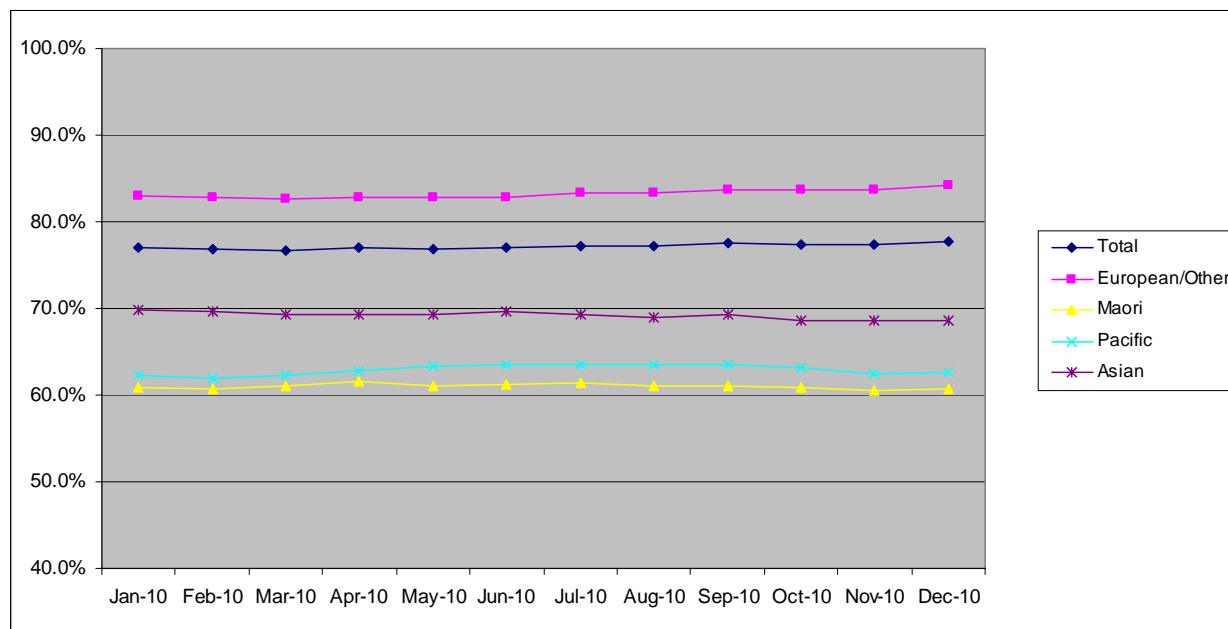


	Population	3 year coverage (n)	3 year coverage (%)
<b>Total</b>	37,031	28,416	76.7%
<b>European/other</b>	25,447	21,027	82.6%
<b>Maori</b>	5,499	3,361	61.1%
<b>Pacific</b>	2,735	1,705	62.3%
<b>Asian</b>	3,350	2,323	69.3%

## 8. NCSP summary monthly coverage in the year to 31 December 2010

### Hutt Valley DHB

Monthly coverage trends for 25-69 year old women screened in the three years to 2010, as a proportion of the hysterectomy adjusted 2006 Census based female population.



Target: 75% for all population groups

### How is your DHB performing as at 31 December 2010?

Rank	DHB	December Quarter Performance	Change from previous quarter
1	Taranaki	83.5%	-0.1%
2	Wairarapa	81.2%	0.5%
3	Nelson Marlborough	79.7%	-0.4%
4	Capital and Coast	79.6%	0.1%
5	Otago*	79.4%	-0.4%
6	Hawke's Bay	78.6%	0.1%
7	Bay of Plenty	78.4%	-0.3%
<b>8</b>	<b>Hutt Valley</b>	<b>77.7%</b>	<b>0.2%</b>
9	South Canterbury	77.1%	-1.2%
10	Lakes	77.0%	0.2%
11	Southland*	76.0%	0.1%
12	Canterbury	75.2%	-0.2%
13	Waikato	74.9%	0.2%
14	Waitemata	74.8%	-0.2%
15	Northland	74.3%	-0.3%
16	Mid Central	73.9%	0.2%
17	Whanganui	73.9%	0.6%
18	Auckland	72.7%	0.4%
19	Tairāwhiti	70.9%	-0.3%
20	West Coast	70.0%	-0.3%
21	Counties Manukau	68.2%	-0.5%

\* On 1 May 2010 Southland and Otago DHBs merged to create Southern DHB.

## 9. Summary Comments

<b>3 yearly coverage to:</b>	<b>30 June 2011</b>	<b>30 June 2010</b>	<b>change</b>
<b>Total</b>	76.9%	77.0%	-0.1%
<b>European/other</b>	83.8%	82.8%	1.0%
<b>Maori</b>	58.9%	61.1%	-2.2%
<b>Pacific</b>	62.3%	63.5%	-1.2%
<b>Asian</b>	67.4%	69.7%	-2.3%
<b>Ranking</b>	8 = of 21	9 of 21	1