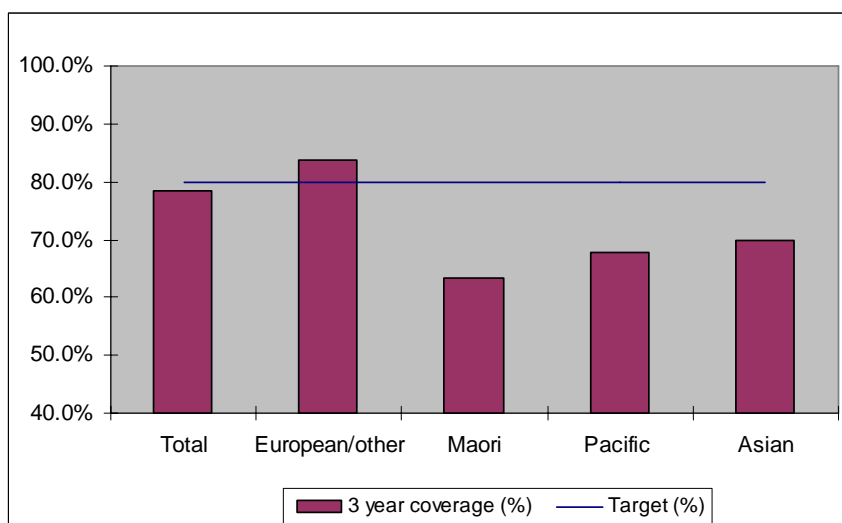


1. NCSP coverage - Hawkes Bay DHB Region - 30 June 2011 quarter

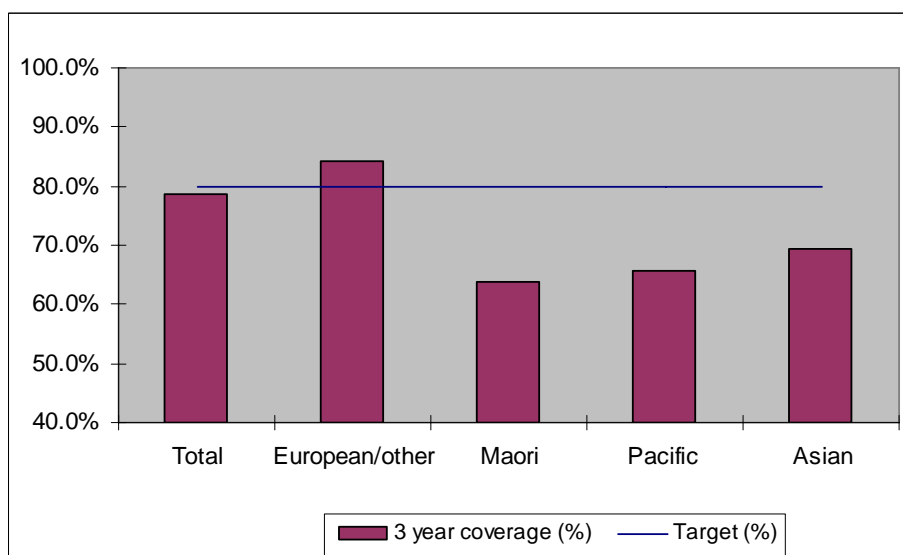
25-69 year old women screened in the three years to 30 June 2011, as a proportion of the hysterectomy adjusted 2006 Census based female population in the Hawkes Bay DHB Region.



	Population	3 year coverage (n)	3 year coverage (%)
Total	38,729	29,960	77.4%
European/other	28,033	23,388	83.4%
Maori	8,537	5,236	61.3%
Pacific	1,024	623	60.8%
Asian	1,135	713	62.8%

2. NCSP coverage - Hawkes Bay DHB Region - 31 March 2011 quarter

25-69 year old women screened in the three years to 31 March 2011, as a proportion of the hysterectomy adjusted 2006 Census based female population in the Hawkes Bay DHB Region.

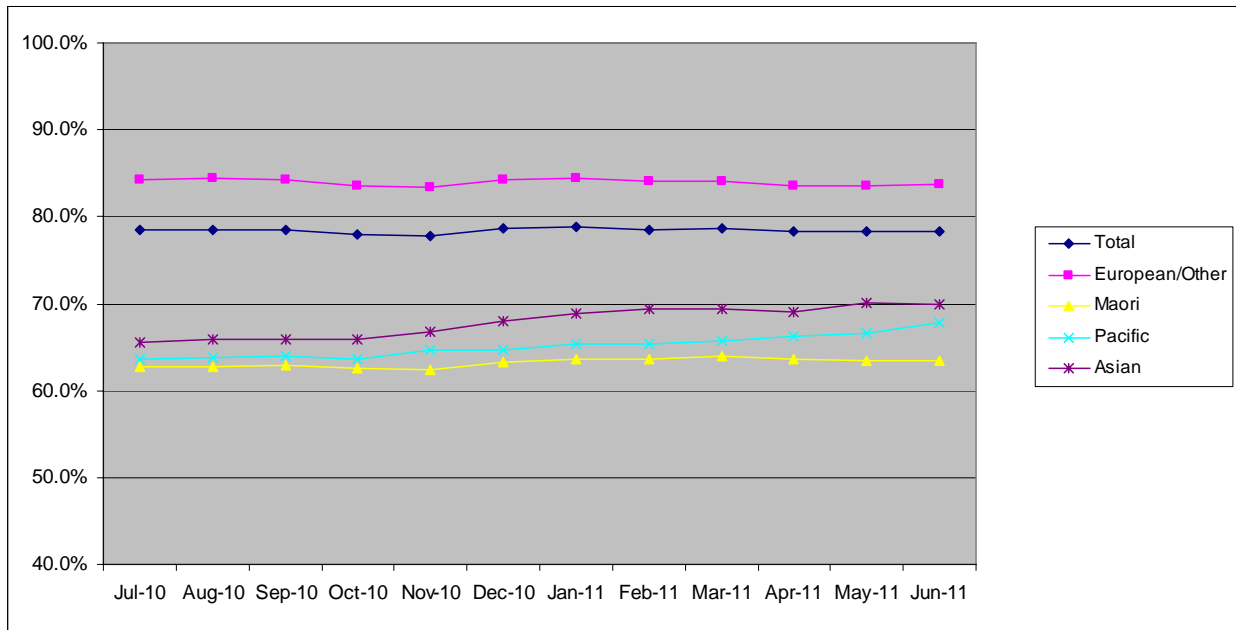


	Population	3 year coverage (n)	3 year coverage (%)
Total	38,716	30,344	78.4%
European/other	27,901	23,365	83.7%
Maori	8,625	5,471	63.4%
Pacific	1,026	695	67.7%
Asian	1,164	813	69.8%

3. NCSP summary monthly coverage in year to 30 June 2011

Hawkes Bay DHB

Monthly coverage trends for 25-69 year old women screened in the three years to 30 June 2011, as a proportion of the hysterectomy adjusted 2006 Census based female population.



Target: 75% for all population groups to 31 December 2010 and 80% for all population groups from 1 January 2011.

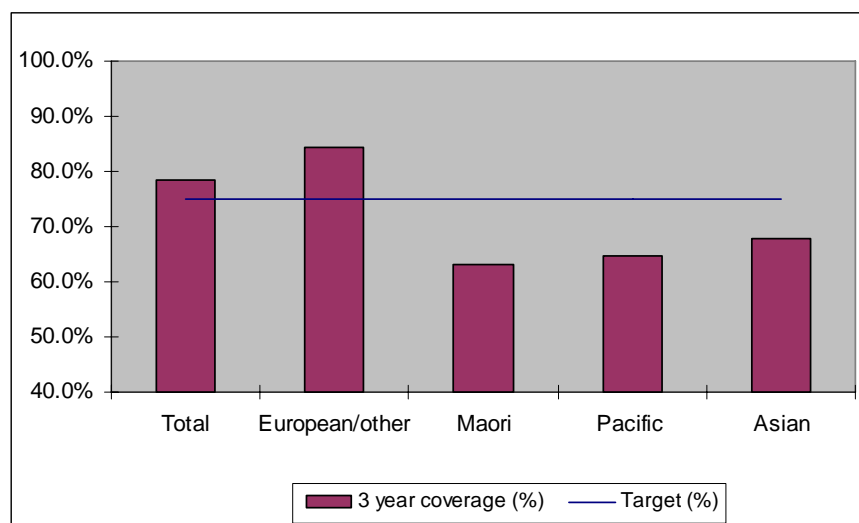
How was your DHB performing as at 30 June 2011?

Rank	DHB	December Quarter Performance	Change from previous quarter
1	Taranaki	82.9%	-0.1%
2	Wairarapa	81.7%	0.1%
3	Capital and Coast	79.3%	-0.3%
4	Nelson Marlborough	78.7%	-0.2%
5	Hawke's Bay	78.4%	-0.4%
6	Otago*	78.3%	-0.5%
7	Bay of Plenty	77.3%	-0.4%
8=	Hutt Valley	76.9%	-0.4%
8=	Lakes	76.9%	0.0%
10	Southland*	75.3%	-0.3%
11	Northland	75.1%	0.7%
12	Waikato	74.9%	0.1%
13	Whanganui	74.6%	0.6%
14	Tairāwhiti	74.5%	1.0%
15	Mid Central	74.3%	0.2%
16	Waitemata	74.0%	-0.5%
17	Canterbury	73.5%	-0.4%
18	Auckland	73.1%	0.3%
19	South Canterbury	72.9%	-2.2%
20	West Coast	68.5%	-1.0%
21	Counties Manukau	67.3%	-0.5%

* On 1 May 2010 Southland and Otago DHBs merged to create Southern DHB.

4. NCSP coverage - Hawkes Bay DHB Region - 31 December 2010 quarter

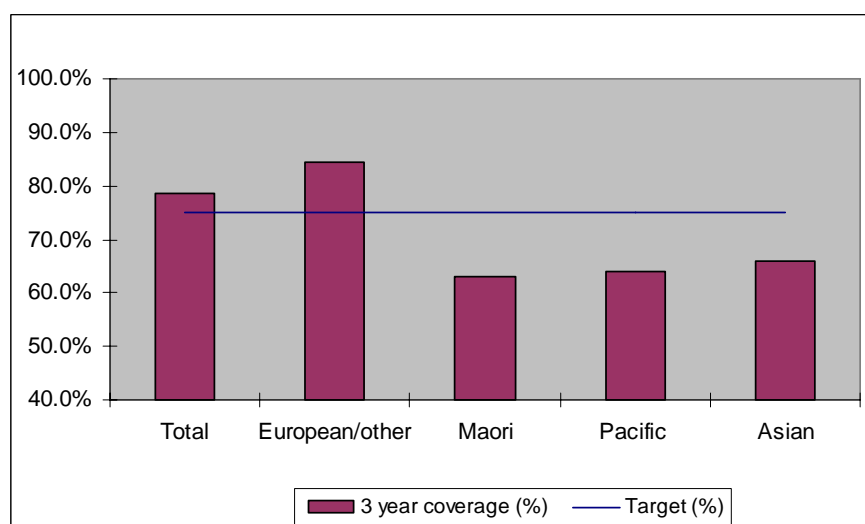
25-69 year old women screened in the three years to 31 December 2010, as a proportion of the hysterectomy adjusted 2006 Census based female population in the Hawkes Bay DHB Region.



	Population	3 year coverage (n)	3 year coverage (%)
Total	38,728	30,431	78.6%
European/other	27,953	23,546	84.2%
Maori	8,591	5,435	63.3%
Pacific	1,032	667	64.6%
Asian	1,152	783	68.0%

5. NCSP coverage - Hawkes Bay DHB Region - 30 September 2010 quarter

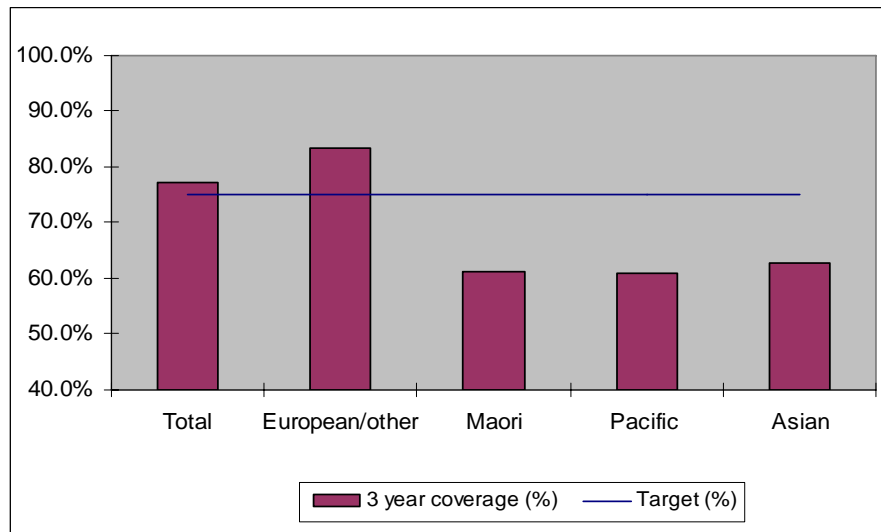
25-69 year old women screened in the three years to 30 September 2010, as a proportion of the hysterectomy adjusted 2006 Census based female population in the Hawkes Bay DHB Region.



	Population	3 year coverage (n)	3 year coverage (%)
Total	38,729	30,393	78.5%
European/other	27,977	23,581	84.3%
Maori	8,573	5,396	62.9%
Pacific	1,035	662	64.0%
Asian	1,144	754	65.9%

6. NCSP coverage - Hawkes Bay DHB Region - 30 June 2010 quarter

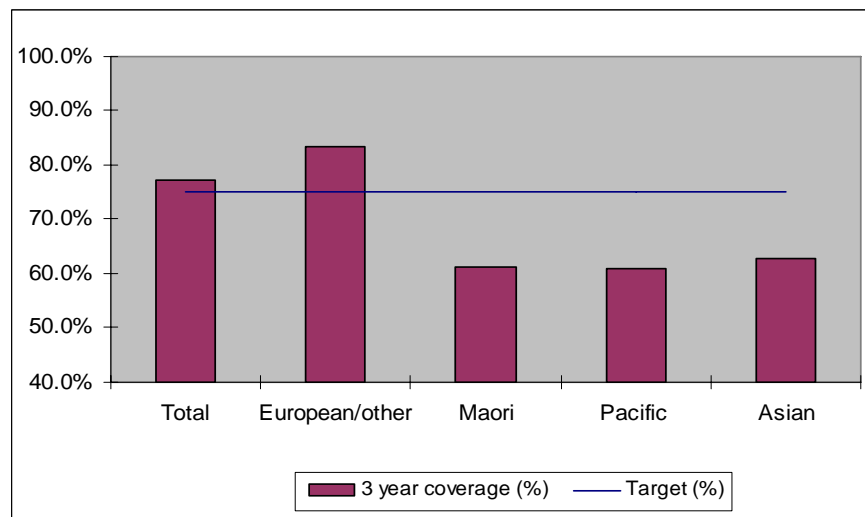
25-69 year old women screened in the three years to 30 June 2010, as a proportion of the hysterectomy adjusted 2006 Census based female population in the Hawkes Bay DHB Region.



	Population	3 year coverage (n)	3 year coverage (%)
Total	38,725	30,267	78.2%
European/other	28,001	23,552	84.1%
Maori	8,553	5,323	62.2%
Pacific	1,035	656	63.4%
Asian	1,136	736	64.8%

7. NCSP coverage - Hawkes Bay DHB Region - 31 March 2010 quarter

25-69 year old women screened in the three years to 31 March 2010, as a proportion of the hysterectomy adjusted 2006 Census based female population in the Hawkes Bay DHB Region.

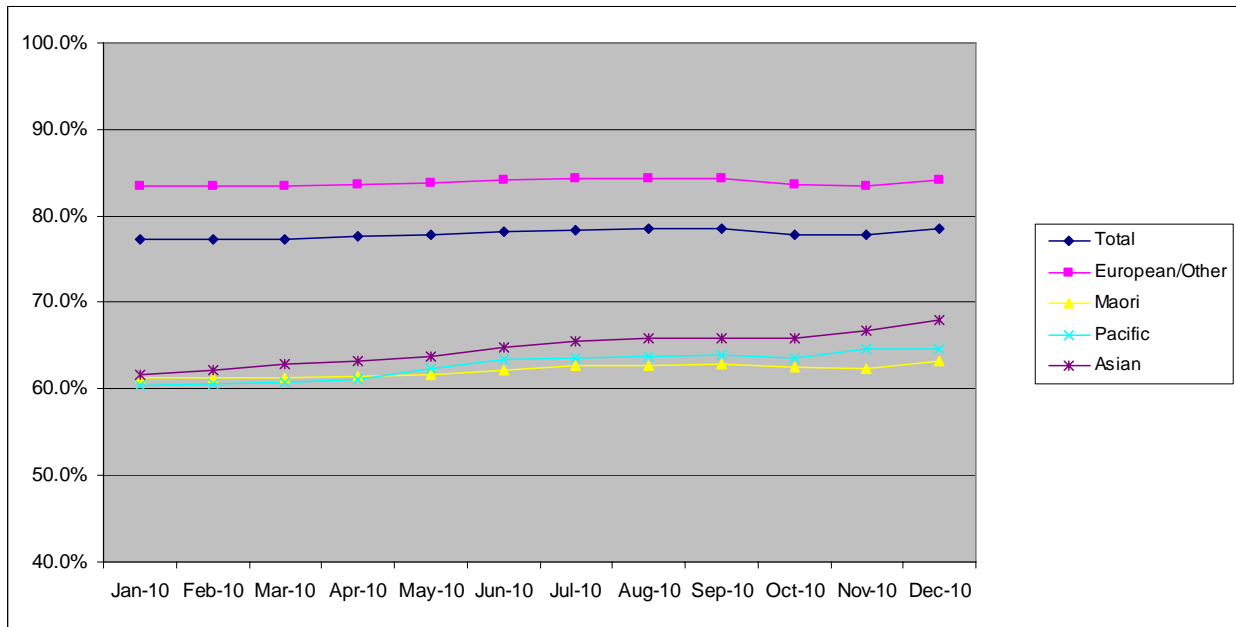


	Population	3 year coverage (n)	3 year coverage (%)
Total	38,729	29,960	77.4%
European/other	28,033	23,388	83.4%
Maori	8,537	5,236	61.3%
Pacific	1,024	623	60.8%
Asian	1,135	713	62.8%

8. NCSP summary monthly coverage in year to 31 December 2010

Hawkes Bay DHB

Monthly coverage trends for 25-69 year old women screened in the three years to 2010, as a proportion of the hysterectomy adjusted 2006 Census based female population.



Target: 75% for all population groups

How is your DHB performing as at 31 December 2010?

Rank	DHB	December Quarter Performance	Change from previous quarter
1	Taranaki	83.5%	-0.1%
2	Wairarapa	81.2%	0.5%
3	Nelson Marlborough	79.7%	-0.4%
4	Capital and Coast	79.6%	0.1%
5	Otago*	79.4%	-0.4%
6	Hawke's Bay	78.6%	0.1%
7	Bay of Plenty	78.4%	-0.3%
8	Hutt Valley	77.7%	0.2%
9	South Canterbury	77.1%	-1.2%
10	Lakes	77.0%	0.2%
11	Southland*	76.0%	0.1%
12	Canterbury	75.2%	-0.2%
13	Waikato	74.9%	0.2%
14	Waitemata	74.8%	-0.2%
15	Northland	74.3%	-0.3%
16	Mid Central	73.9%	0.2%
17	Whanganui	73.9%	0.6%
18	Auckland	72.7%	0.2%
19	Tairāwhiti	70.9%	-0.3%
20	West Coast	70.0%	-0.3%
21	Counties Manukau	68.2%	-0.5%

* On 1 May 2010 Southland and Otago DHBs merged to create Southern DHB.

9. Summary Comments

3 yearly coverage to:	30 June 2011	30 June 2010	change
Total	78.4%	78.2%	0.2%
European/other	83.7%	84.1%	-0.4%
Maori	63.4%	62.2%	1.2%
Pacific	67.7%	63.4%	4.3%
Asian	69.8%	64.8%	5.0%
Ranking	5 of 21	8 of 21	3