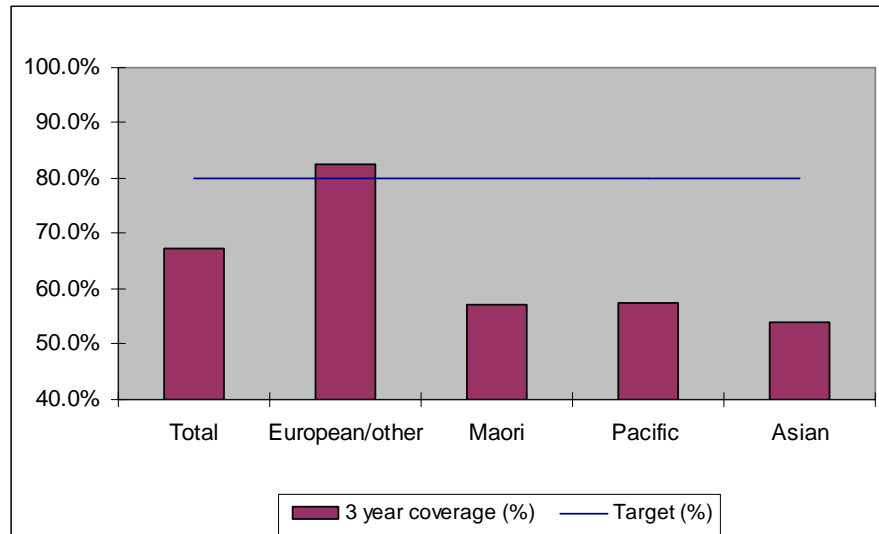


### 1. NCSP coverage - Counties Manakau DHB Region - 30 June 2011 quarter

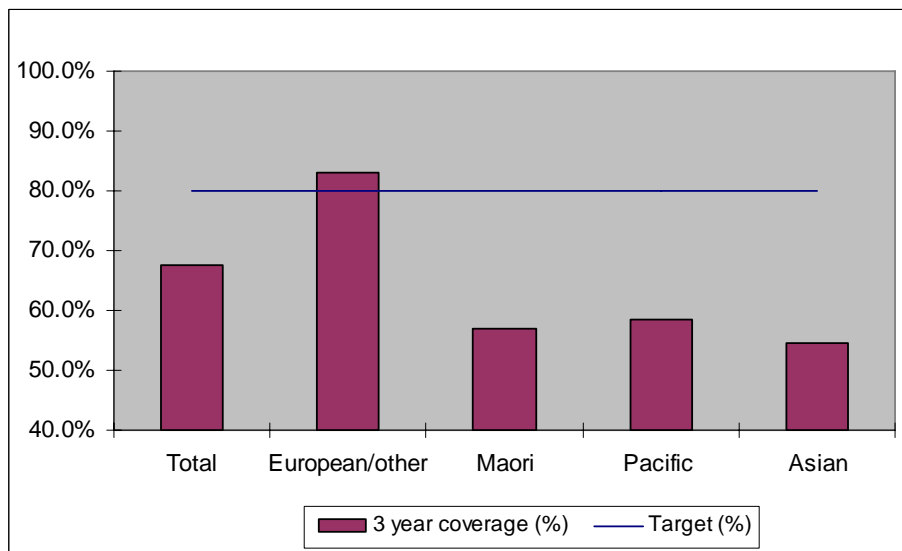
25-69 year old women screened in the three years to 30 June 2011, as a proportion of the hysterectomy adjusted 2006 Census based female population in the Counties Manakau DHB Region.



	Population	3 year coverage (n)	3 year coverage (%)
<b>Total</b>	127,551	85,810	67.3%
<b>European/other</b>	53,806	44,483	82.7%
<b>Maori</b>	18,194	10,377	57.0%
<b>Pacific</b>	26,017	14,981	57.6%
<b>Asian</b>	29,534	15,969	54.1%

### 2. NCSP coverage - Counties Manakau DHB Region -31 March 2011 quarter

25-69 year old women screened in the three years to 31 March 2011, as a proportion of the hysterectomy adjusted 2006 Census based female population in the Counties Manakau DHB Region.

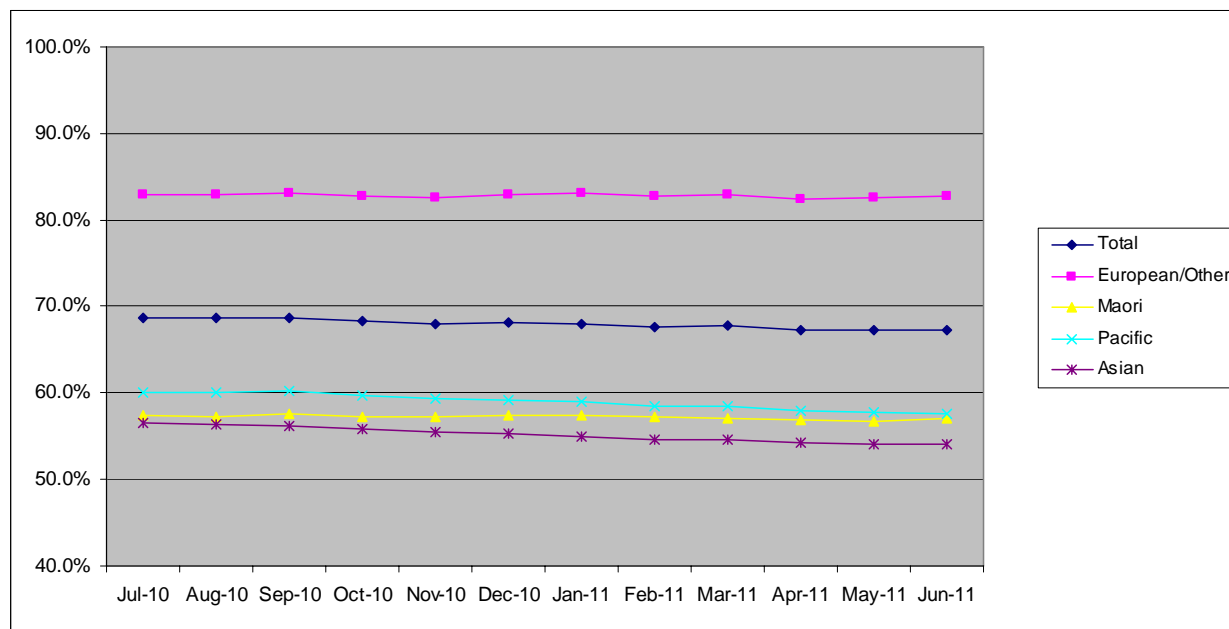


	Population	3 year coverage (n)	3 year coverage (%)
<b>Total</b>	126,845	85,906	67.7%
<b>European/other</b>	53,706	44,546	82.9%
<b>Maori</b>	18,126	10,350	57.1%
<b>Pacific</b>	25,808	15,073	58.4%
<b>Asian</b>	29,205	15,937	54.6%

### 3. NCSP summary monthly coverage in the year to 30 June 2011

#### Counties Manakau DHB

Monthly coverage trends for 25-69 year old women screened in the three years to 30 June 2011, as a proportion of the hysterectomy adjusted 2006 Census based female population.



Target: 75% for all population groups to 31 December 2010 and 80% for all population groups from 1 January 2011.

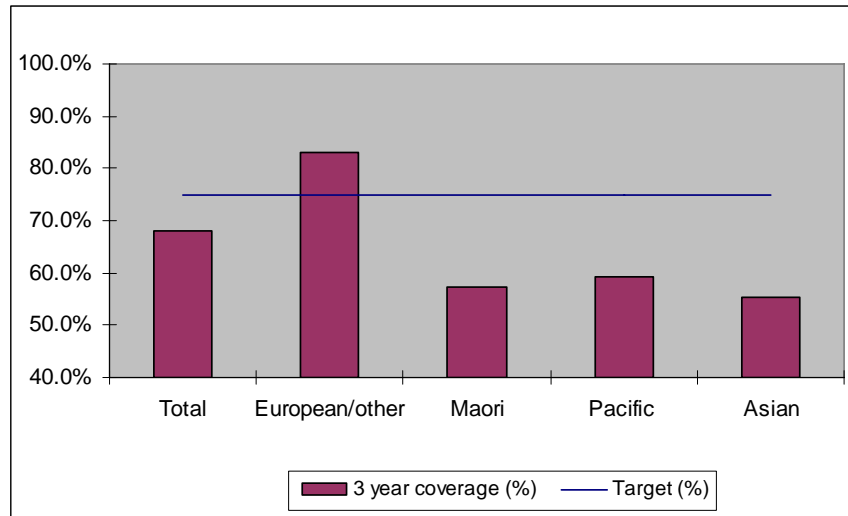
#### How was your DHB performing as at 30 June 2011?

Rank	DHB	December Quarter Performance	Change from previous quarter
1	Taranaki	82.9%	-0.1%
2	Wairarapa	81.7%	0.1%
3	Capital and Coast	79.3%	-0.3%
4	Nelson Marlborough	78.7%	-0.2%
5	Hawke's Bay	78.4%	-0.4%
6	Otago*	78.3%	-0.5%
7	Bay of Plenty	77.3%	-0.4%
8=	Hutt Valley	76.9%	-0.4%
8=	Lakes	76.9%	0.0%
10	Southland*	75.3%	-0.43%
11	Northland	75.1%	0.7%
12	Waikato	74.9%	0.1%
13	Whanganui	74.6%	0.6%
14	Tairāwhiti	74.5%	1.0%
15	Mid Central	74.3%	0.2%
16	Waitemata	74.0%	-0.5%
17	Canterbury	73.5%	-0.4%
18	Auckland	73.1%	0.3%
19	South Canterbury	72.9%	-2.2%
20	West Coast	68.5%	-1.0%
<b>21</b>	<b>Counties Manukau</b>	<b>67.3%</b>	<b>-0.4%</b>

\* On 1 May 2010 Southland and Otago DHBs merged to create Southern DHB

#### 4. NCSP coverage - Counties Manakau DHB Region - 31 December 2010 quarter

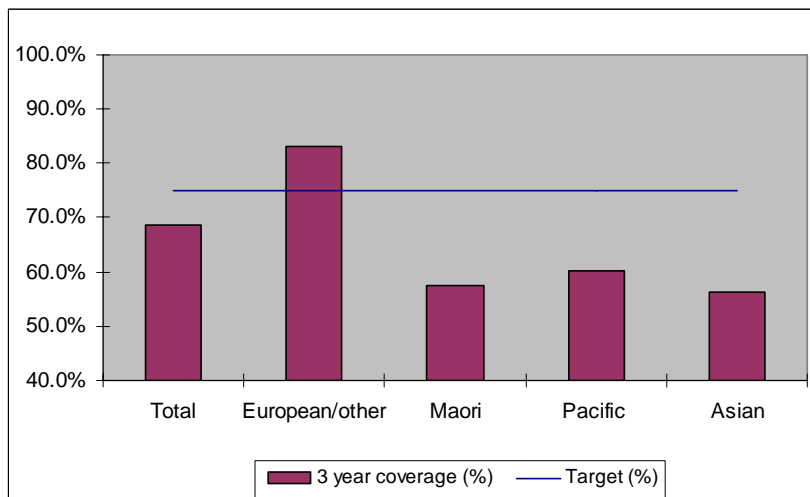
25-69 year old women screened in the three years to 31 December 2010, as a proportion of the hysterectomy adjusted 2006 Census based female population in the Counties Manakau DHB Region.



	Population	3 year coverage (n)	3 year coverage (%)
<b>Total</b>	126,145	85,983	68.2%
<b>European/other</b>	53,604	44,482	83.0%
<b>Maori</b>	18,063	10,360	57.4%
<b>Pacific</b>	25,601	15,172	59.3%
<b>Asian</b>	28,877	15,969	55.3%

#### 5. NCSP coverage - Counties Manakau DHB Region - 30 September 2010 quarter

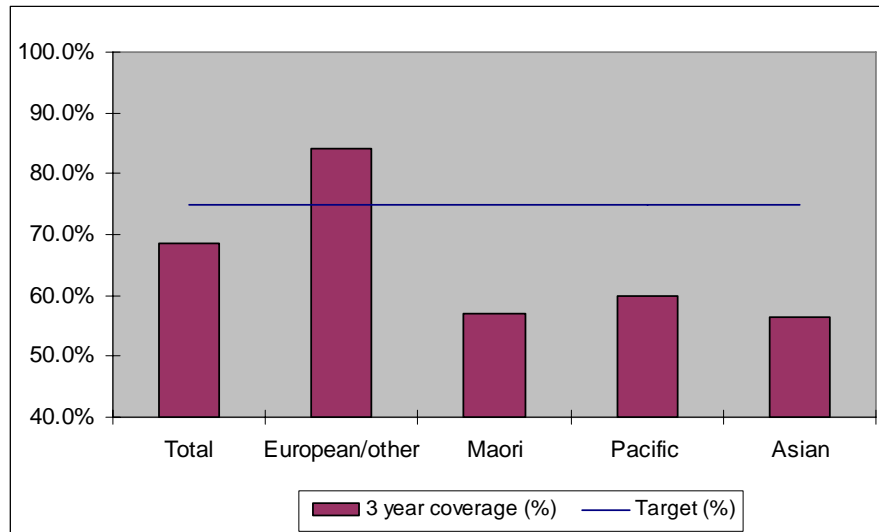
25-69 year old women screened in the three years to 30 September 2010, as a proportion of the hysterectomy adjusted 2006 Census based female population in the Counties Manakau DHB Region.



	Population	3 year coverage (n)	3 year coverage (%)
<b>Total</b>	125,431	86,150	68.7%
<b>European/other</b>	53,501	44,479	83.1%
<b>Maori</b>	17,994	10,359	57.6%
<b>Pacific</b>	25,390	15,275	60.2%
<b>Asian</b>	28,546	16,037	56.2%

## 6. NCSP coverage - Counties Manakau DHB Region - 30 June 2010 quarter

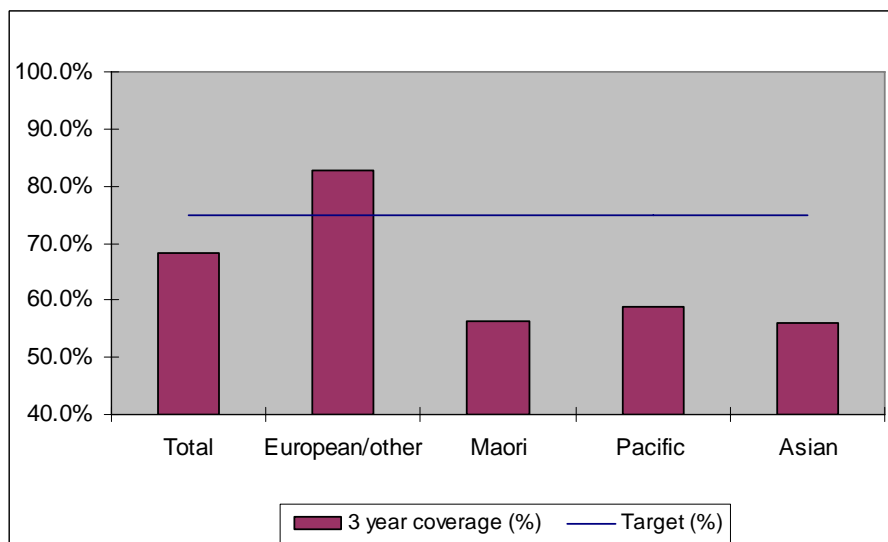
25-69 year old women screened in the three years to 30 June 2010, as a proportion of the hysterectomy adjusted 2006 Census based female population in the Counties Manakau DHB Region.



	Population	3 year coverage (n)	3 year coverage (%)
<b>Total</b>	124,719	85,504	68.6%
<b>European/other</b>	53,397	44,238	82.8%
<b>Maori</b>	17,926	10,231	57.1%
<b>Pacific</b>	25,180	15,070	59.8%
<b>Asian</b>	28,216	15,965	56.6%

## 7. NCSP coverage - Counties Manakau DHB Region - 31 March 2010 quarter

25-69 year old women screened in the three years to 31 March 2010, as a proportion of the hysterectomy adjusted 2006 Census based female population in the Counties Manakau DHB Region.

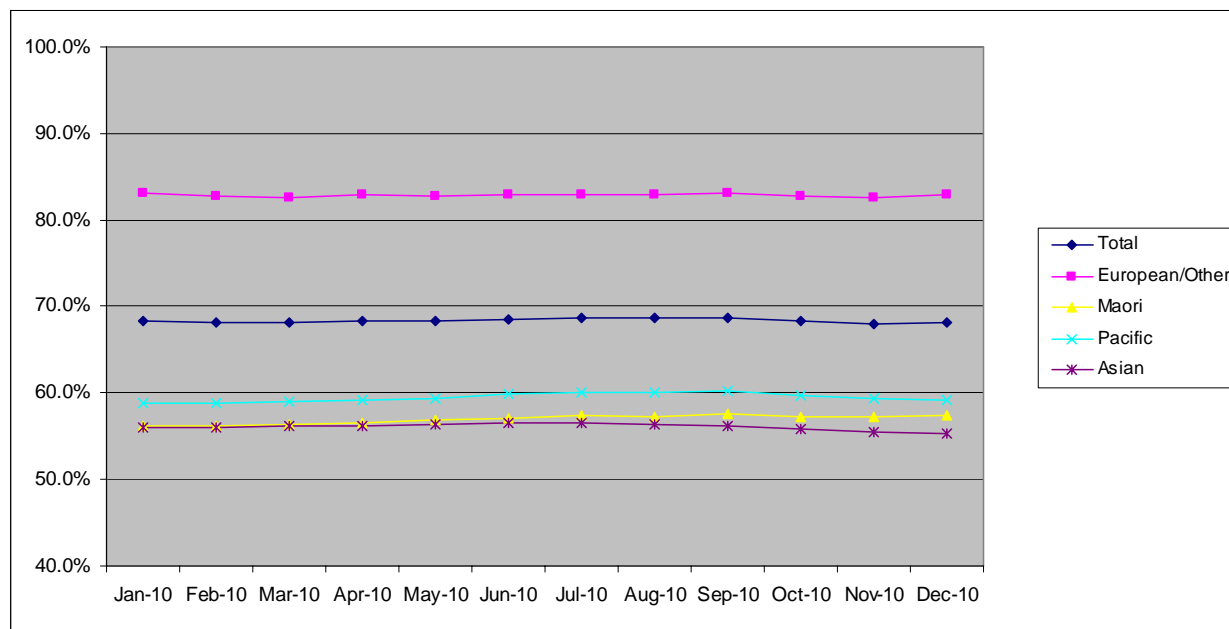


	Population	3 year coverage (n)	3 year coverage (%)
<b>Total</b>	123,978	84,456	68.1%
<b>European/other</b>	53,241	44,003	82.6%
<b>Maori</b>	17,869	10,071	56.4%
<b>Pacific</b>	24,989	14,738	59.0%
<b>Asian</b>	27,879	15,644	56.1%

## 8. NCSP summary monthly coverage in the year to 31 December 2010

### Counties Manakau DHB

Monthly coverage trends for 25-69 year old women screened in the three years to 2010, as a proportion of the hysterectomy adjusted 2006 Census based female population.



Target: 75% for all population groups

### How is your DHB performing as at 31 December 2010?

Rank	DHB	December Quarter Performance	Change from previous quarter
1	Taranaki	83.5%	-0.1%
2	Wairarapa	81.2%	0.5%
3	Nelson Marlborough	79.7%	-0.4%
4	Capital and Coast	79.6%	0.1%
5	Otago	79.4%	-0.4%
6	Hawke's Bay	78.6%	0.1%
7	Bay of Plenty	78.4%	-0.3%
8	Hutt Valley	77.7%	0.2%
9	South Canterbury	77.1%	-1.2%
10	Lakes	77.0%	0.2%
11	Southland	76.0%	0.1%
12	Canterbury	75.2%	-0.2%
13	Waikato	74.9%	0.2%
14	Waitemata	74.8%	-0.2%
15	Northland	74.3%	-0.3%
16	Mid Central	73.9%	0.2%
17	Whanganui	73.9%	0.6%
18	Auckland	72.7%	0.2%
19	Tairāwhiti	70.9%	-0.3%
20	West Coast	70.0%	-0.3%
<b>21</b>	<b>Counties Manukau</b>	<b>68.2%</b>	<b>-0.5%</b>

\* On 1 May 2010 Southland and Otago DHBs merged to create Southern DHB

## 9. Summary Comments

<b>3 yearly coverage to:</b>	<b>30 June 2011</b>	<b>30 June 2010</b>	<b>change</b>
<b>Total</b>	67.3%	68.6%	-1.3%
<b>European/other</b>	82.7%	82.8%	-0.1%
<b>Maori</b>	57.0%	57.1%	-0.1%
<b>Pacific</b>	57.6%	59.8%	-2.2%
<b>Asian</b>	54.1%	56.6%	-2.5%
<b>Ranking</b>	21 of 21	21 of 21	0