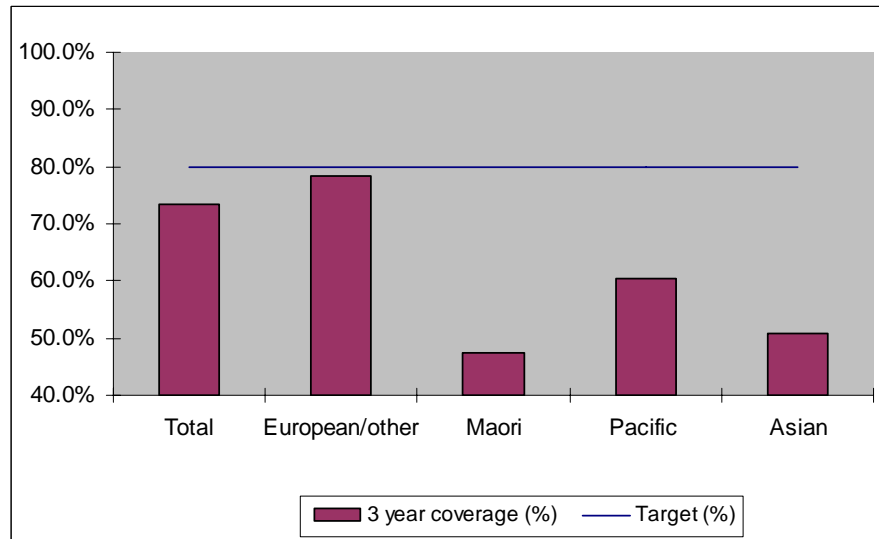


### 1. NCSP coverage - Canterbury DHB Region - 30 June 2011 quarter

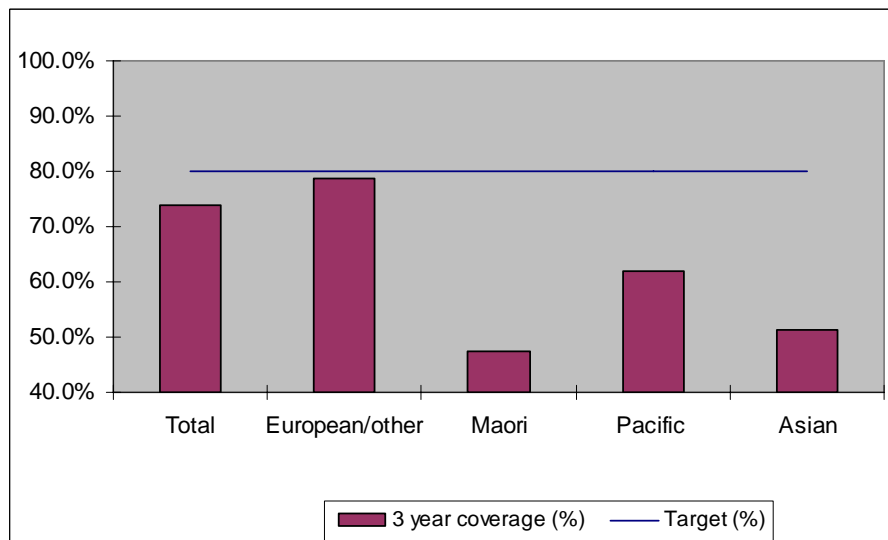
25-69 year old women screened in the three years to 30 June 2011, as a proportion of the hysterectomy adjusted 2006 Census based female population in the Canterbury DHB Region.



	Population	3 year coverage (n)	3 year coverage (%)
<b>Total</b>	131,210	96,410	73.5%
<b>European/other</b>	108,493	84,938	78.3%
<b>Maori</b>	8,480	4,007	47.3%
<b>Pacific</b>	2,488	1,501	60.3%
<b>Asian</b>	11,749	5,964	50.8%

### 2. NCSP coverage - Canterbury DHB Region - 31 March 2011 quarter

25-69 year old women screened in the three years to 31 March 2011, as a proportion of the hysterectomy adjusted 2006 Census based female population in the Canterbury DHB Region.

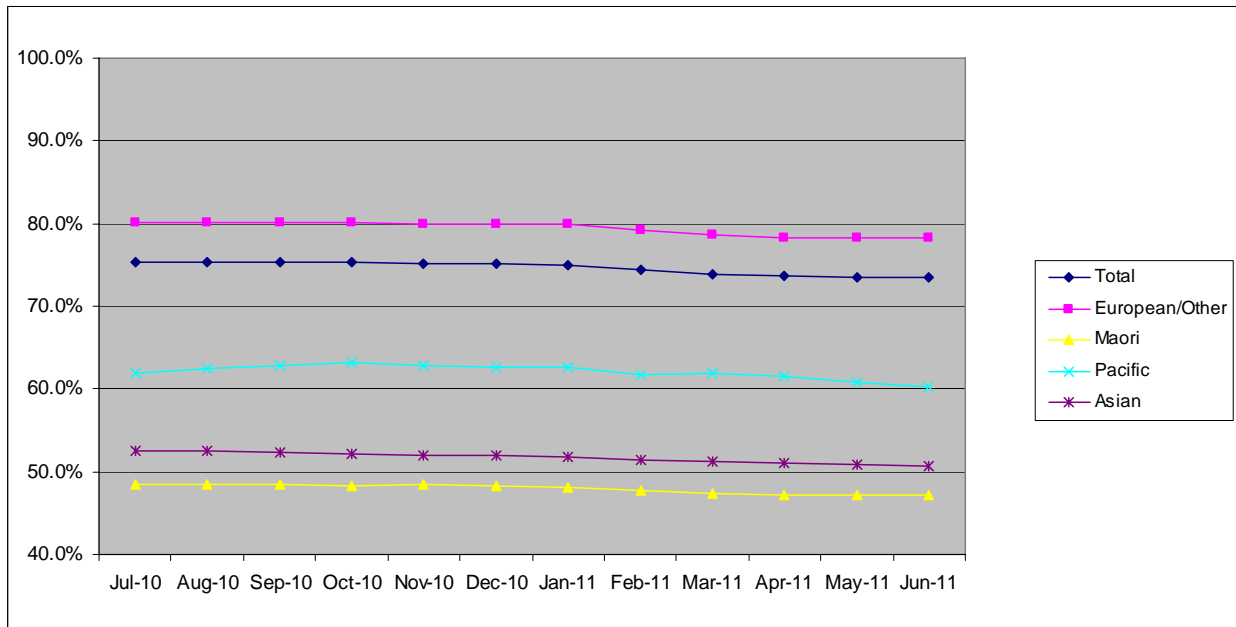


	Population	3 year coverage (n)	3 year coverage (%)
<b>Total</b>	130,891	96,693	73.9%
<b>European/other</b>	108,354	85,214	78.6%
<b>Maori</b>	8,426	3,987	47.3%
<b>Pacific</b>	2,466	1,528	62.0%
<b>Asian</b>	11,645	5,964	51.2%

### 3. NCSP summary monthly coverage in the year to 30 June 2011

#### Canterbury DHB

Monthly coverage trends for 25-69 year old women screened in the three years to 30 June 2011, as a proportion of the hysterectomy adjusted 2006 Census based female population.



Target: 75% for all population groups to 31 December 2010 and 80% for all population groups from 1 January 2011

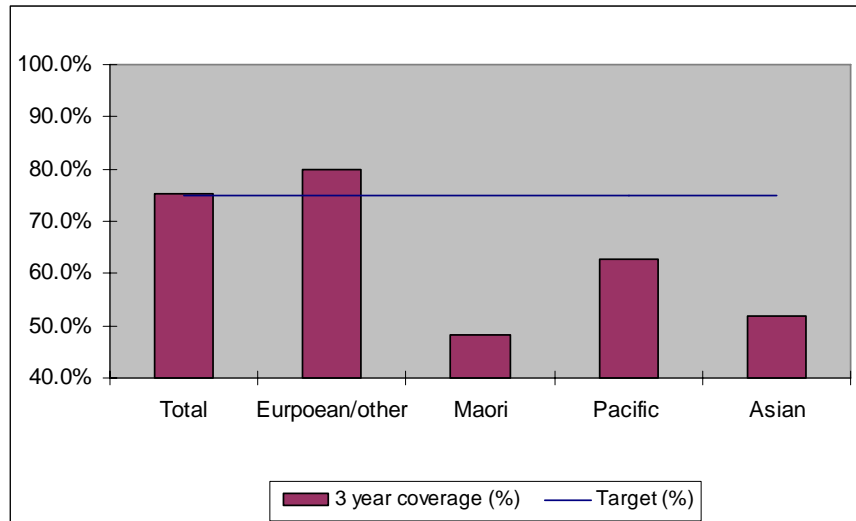
#### How was your DHB performing as at 30 June 2011?

Rank	DHB	June 2011 quarter performance	Change from previous quarter
1	Taranaki	82.9%	-0.1%
2	Wairarapa	81.7%	0.1%
3	Capital and Coast	79.3%	-0.3%
4	Nelson Marlborough	78.7%	-0.2%
5	Hawke's Bay	78.4%	-0.3%
6	Otago*	78.3%	-0.5%
7	Bay of Plenty	77.3%	-0.4%
8=	Hutt Valley	76.9%	-0.4%
8=	Lakes	76.9%	0.0%
10	Southland*	75.3%	-0.3%
11	Northland	75.1%	0.7%
12	Waikato	74.9%	0.1%
13	Whanganui	74.6%	0.6%
14	Tairāwhiti	74.5%	1.0%
15	Mid Central	74.3%	0.2%
16	Waitemata	74.0%	-0.5%
<b>17</b>	<b>Canterbury</b>	<b>73.5%</b>	<b>-0.4%</b>
18	Auckland	73.1%	0.2%
19	South Canterbury	72.9%	-2.2%
20	West Coast	68.5%	-1.0%
21	Counties Manukau	67.3%	-0.5%

\* On 1 May 2010 Southland and Otago DHBs merged to create Southern DHB.

#### 4. NCSP coverage - Canterbury DHB Region - 31 December 2010 quarter

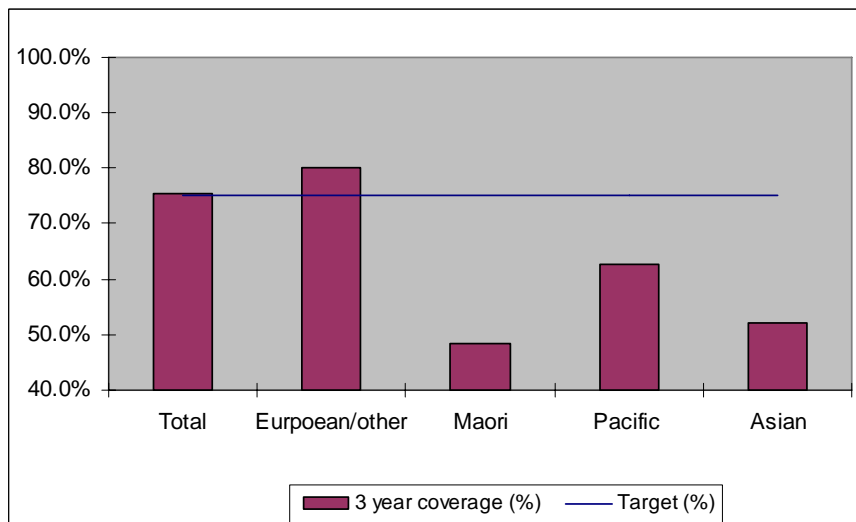
25-69 year old women screened in the three years to 31 December 2010, as a proportion of the hysterectomy adjusted 2006 Census based female population in the Canterbury DHB Region.



	Population	3 year coverage (n)	3 year coverage (%)
<b>Total</b>	130,578	98,132	75.2%
<b>European/other</b>	108,215	86,564	80.0%
<b>Maori</b>	8,372	4,046	48.3%
<b>Pacific</b>	2,446	1,532	62.6%
<b>Asian</b>	11,545	5,990	51.9%

#### 5. NCSP coverage - Canterbury DHB Region - 30 September 2010 quarter

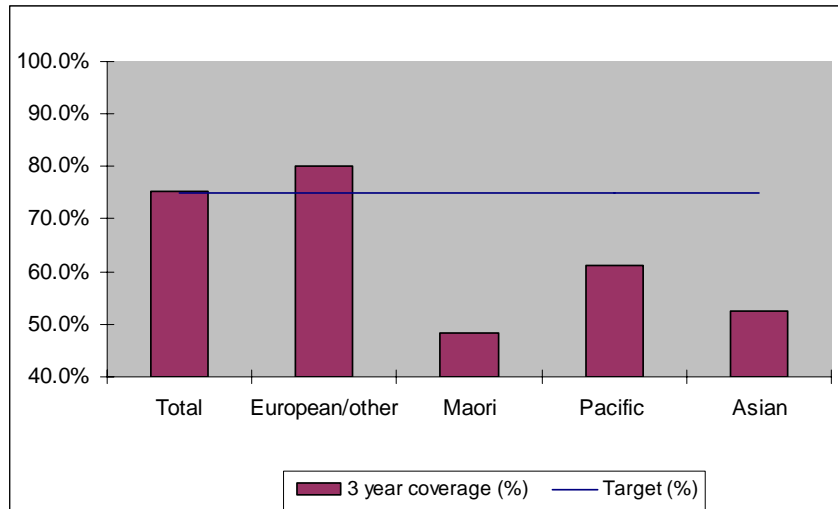
25-69 year old women screened in the three years to 30 September 2010, as a proportion of the hysterectomy adjusted 2006 Census based female population in the Canterbury DHB Region.



	Population	3 year coverage (n)	3 year coverage (%)
<b>Total</b>	130,252	98,196	75.4%
<b>European/other</b>	108,073	86,664	80.2%
<b>Maori</b>	8,315	4,034	48.5%
<b>Pacific</b>	2,423	1,520	62.7%
<b>Asian</b>	11,441	5,978	52.3%

### 6. NCSP coverage - Canterbury DHB Region - 30 June 2010 quarter

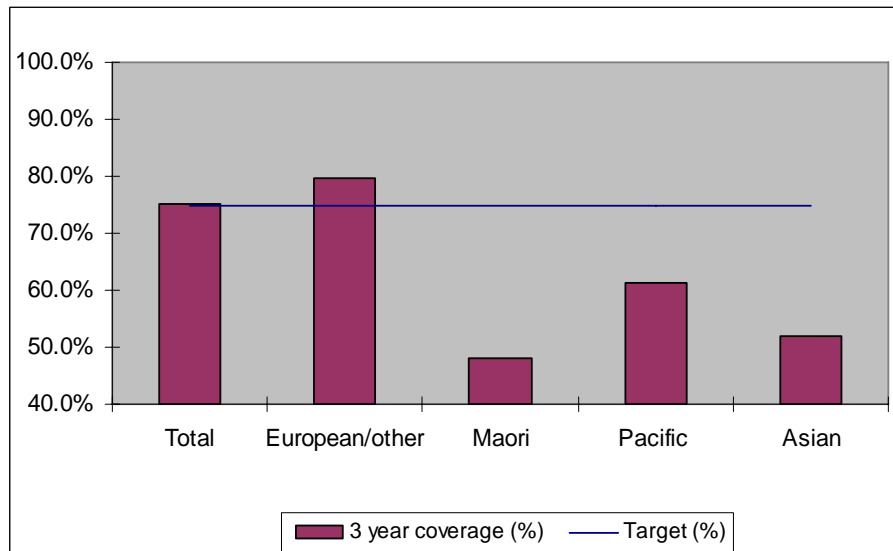
25-69 year old women screened in the three years to 30 June 2010, as a proportion of the hysterectomy adjusted 2006 Census based female population in the Canterbury DHB Region.



	Population	3 year coverage (n)	3 year coverage (%)
<b>Total</b>	129,928	97,871	75.3%
<b>European/other</b>	107,932	86,450	80.1%
<b>Maori</b>	8,259	3,995	48.4%
<b>Pacific</b>	2,401	1,472	61.3%
<b>Asian</b>	11,336	5,954	52.5%

### 7. NCSP coverage - Canterbury DHB Region - 31 March 2010 quarter

25-69 year old women screened in the three years to 31 March 2010, as a proportion of the hysterectomy adjusted 2006 Census based female population in the Canterbury DHB Region.

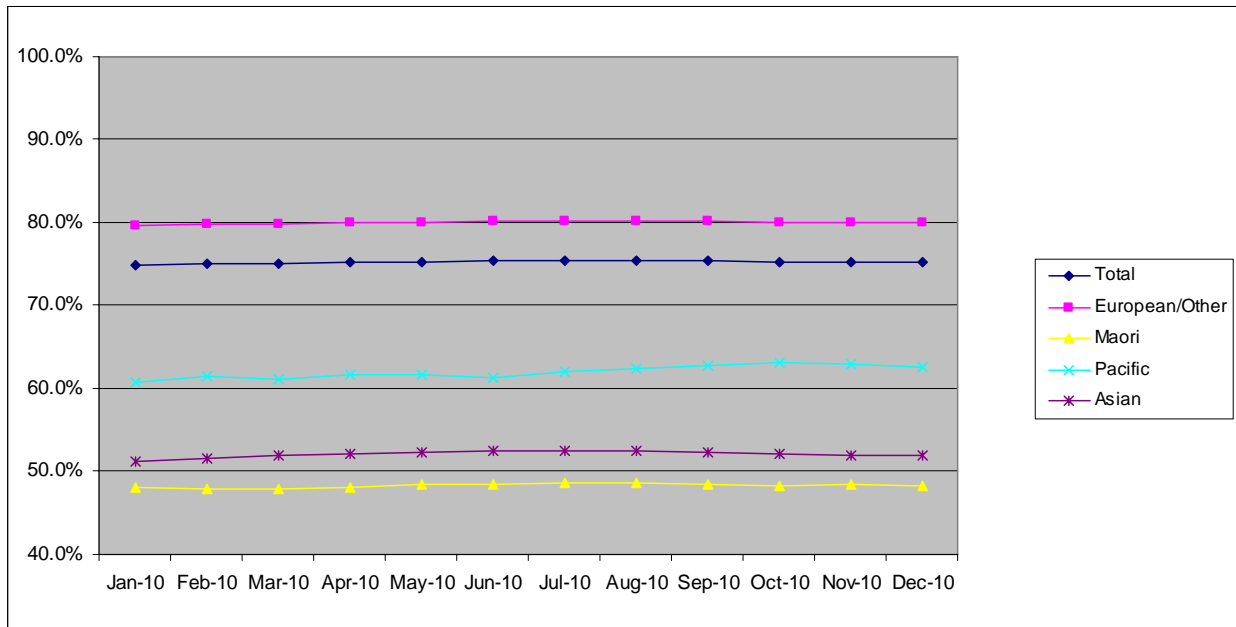


	Population	3 year coverage (n)	3 year coverage (%)
<b>Total</b>	129,498	97,158	75.0%
<b>European/other</b>	107,701	85,943	79.8%
<b>Maori</b>	8,212	3,938	48.0%
<b>Pacific</b>	2,385	1,458	61.1%
<b>Asian</b>	11,200	5,819	52.0%

## 8. NCSP summary monthly coverage in the year to 31 December 2010

### Canterbury DHB

Monthly coverage trends for 25-69 year old women screened in the three years to 2010, as a proportion of the hysterectomy adjusted 2006 Census based female population.



Target: 75% for all population groups

### How is your DHB performing as at 31 December 2010?

Rank	DHB	December Quarter Performance	Change from previous quarter
1	Taranaki	83.5%	-0.1%
2	Wairarapa	81.2%	0.5%
3	Nelson Marlborough	79.7%	-0.4%
4	Capital and Coast	79.6%	0.1%
5	Otago*	79.4%	-0.4%
6	Hawke's Bay	78.6%	0.1%
7	Bay of Plenty	78.4%	-0.3%
8	Hutt Valley	77.7%	0.2%
9	South Canterbury	77.1%	-1.2%
10	Lakes	77.0%	0.2%
11	Southland*	76.0%	0.1%
<b>12</b>	<b>Canterbury</b>	<b>75.2%</b>	<b>-0.2%</b>
13	Waikato	74.9%	0.2%
14	Waitemata	74.8%	-0.2%
15	Northland	74.3%	-0.3%
16	Mid Central	73.9%	0.2%
17	Whanganui	73.9%	0.6%
18	Auckland	72.7%	0.2%
19	Tairāwhiti	70.9%	-0.3%
20	West Coast	70.0%	-0.3%
21	Counties Manukau	68.2%	-0.5%

\* On 1 May 2010 Southland and Otago DHBs merged to create Southern DHB.

## 9. Summary Comments

<b>3 yearly coverage to:</b>	<b>30 June 2011</b>	<b>30 June 2010</b>	<b>change</b>
<b>Total</b>	73.5%	75.3%	-1.8%
<b>European/other</b>	78.3%	80.1%	-1.8%
<b>Maori</b>	47.3%	48.4%	-1.1%
<b>Pacific</b>	60.3%	61.3%	-1.0%
<b>Asian</b>	50.8%	52.5%	-1.7%
<b>Ranking</b>	17 of 21	12 of 21	-5