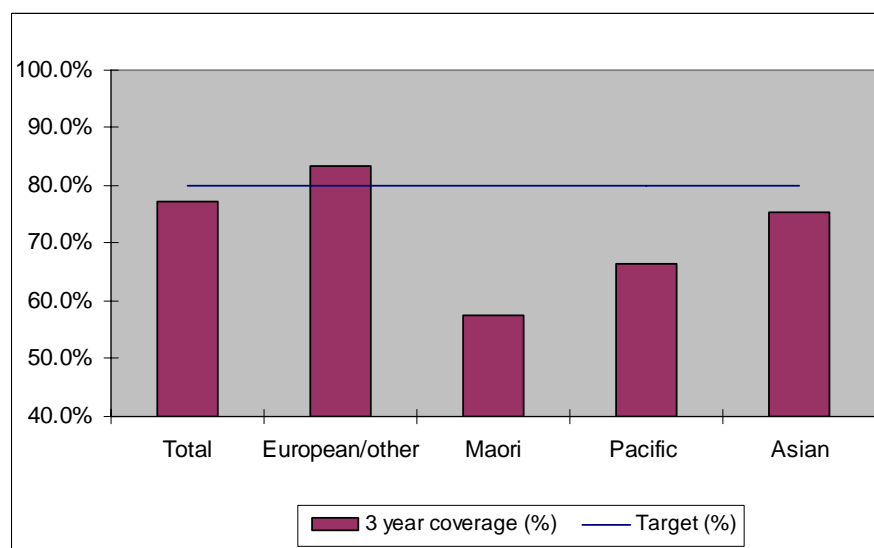


### 1. NCSP coverage - Bay of Plenty DHB Region - 30 June 2011 quarter

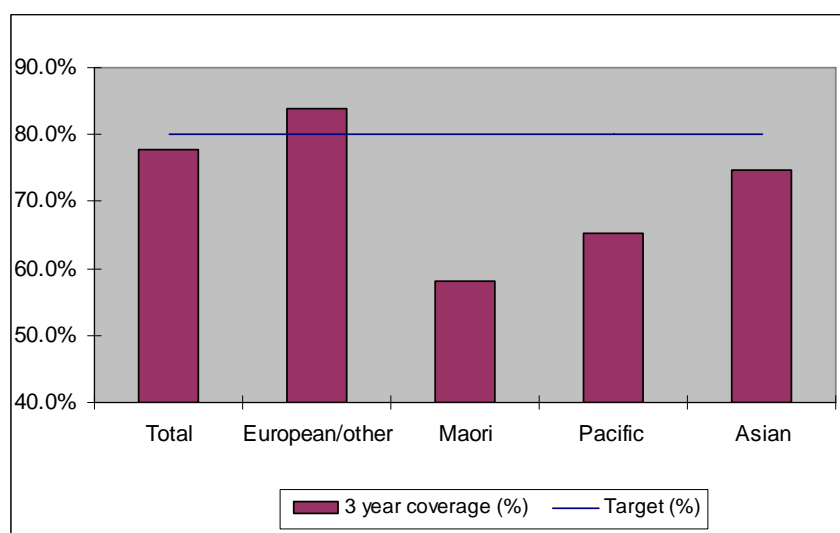
25-69 year old women screened in the three years to 30 June 2011, as a proportion of the hysterectomy adjusted 2006 Census based female population in the Bay of Plenty DHB Region.



	Population	3 year coverage (n)	3 year coverage (%)
<b>Total</b>	53,361	41,251	77.3%
<b>European/other</b>	39,024	32,585	83.5%
<b>Maori</b>	11,751	6,770	57.6%
<b>Pacific</b>	625	415	66.4%
<b>Asian</b>	1,961	1,481	75.5%

### 2. NCSP coverage - Bay of Plenty DHB Region - 31 March 2011 quarter

25-69 year old women screened in the three years to 31 March 2011, as a proportion of the hysterectomy adjusted 2006 Census based female population in the Bay of Plenty DHB Region.

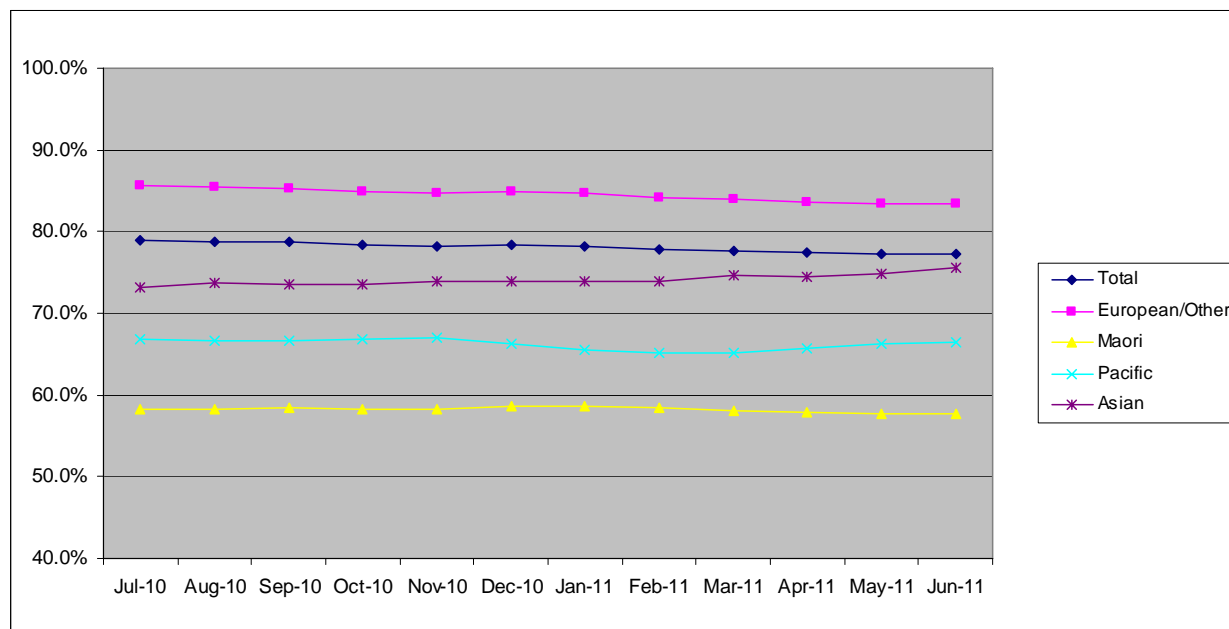


	Population	3 year coverage (n)	3 year coverage (%)
<b>Total</b>	53,232	41,360	77.7%
<b>European/other</b>	38,937	32,685	83.9%
<b>Maori</b>	11,734	6,821	58.1%
<b>Pacific</b>	620	404	65.2%
<b>Asian</b>	1,941	1,450	74.7%

### 3. NCSP summary monthly coverage in the year to 30 June 2011

#### Bay of Plenty DHB

Monthly coverage trends for 25-69 year old women screened in the three years to 30 June 2011, as a proportion of the hysterectomy adjusted 2006 Census based female population.



Target: 75% for all population groups to 31 December 2011 and 80% for all population groups from 1 January 2011

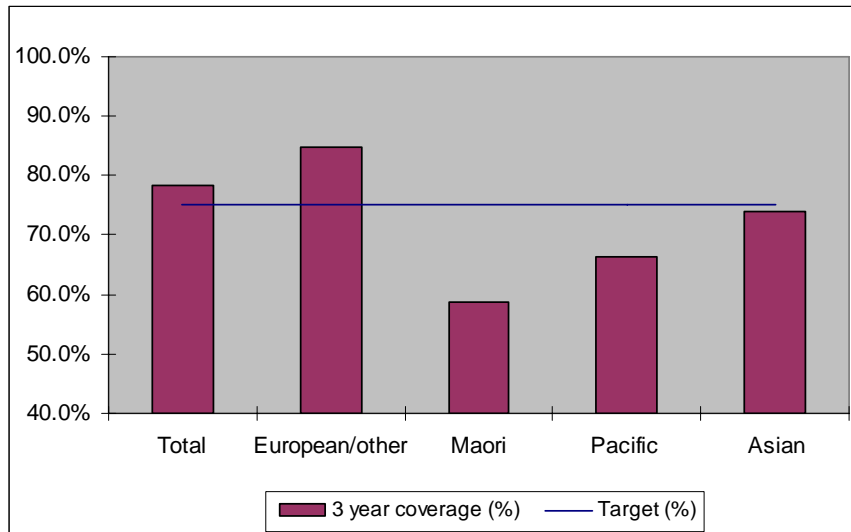
#### How was your DHB performing as at 30 June 2011?

Rank	DHB	June 2011 quarter performance	Change from previous quarter
1	Taranaki	82.9%	-0.1%
2	Wairarapa	81.7%	0.1%
3	Capital and Coast	79.3%	-0.3%
4	Nelson Marlborough	78.7%	-0.2%
5	Hawke's Bay	78.4%	-0.4%
6	Otago*	78.3%	-0.5%
<b>7</b>	<b>Bay of Plenty</b>	<b>77.3%</b>	<b>-0.4%</b>
8=	Hutt Valley	76.9%	-0.4%
8=	Lakes	76.9%	0.0%
10	Southland*	75.3%	-0.3%
11	Northland	75.1%	0.7%
12	Waikato	74.9%	0.1%
13	Whanganui	74.6%	0.6%
14	Tairāwhiti	74.5%	1.0%
15	Mid Central	74.3%	0.2%
16	Waitemata	74.0%	-0.5%
17	Canterbury	73.5%	-0.4%
18	Auckland	73.1%	0.3%
19	South Canterbury	72.9%	-2.2%
20	West Coast	68.5%	-1.0%
21	Counties Manukau	67.3%	-0.5%

\* On 1 May 2010 Southland and Otago DHBs merged to create Southern DHB.

#### 4. NCSP coverage - Bay of Plenty DHB Region - 31 December 2010 quarter

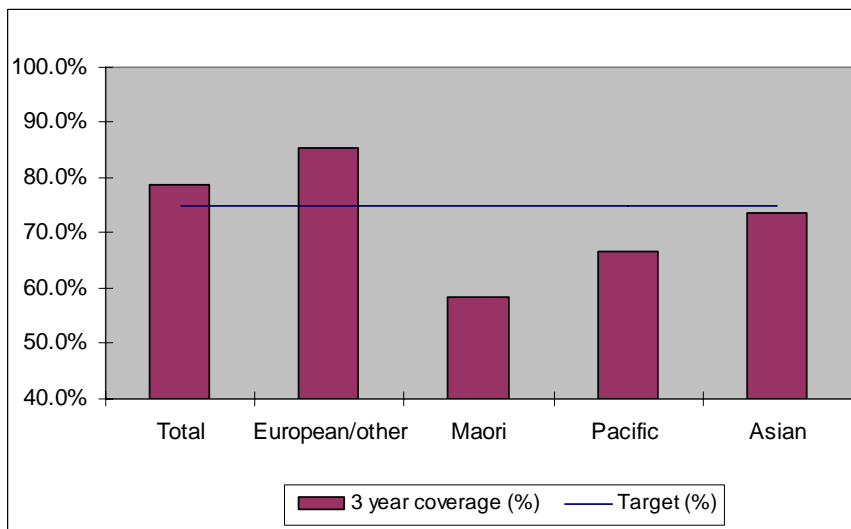
25-69 year old women screened in the three years to 31 December 2010, as a proportion of the hysterectomy adjusted 2006 Census based female population in the Bay of Plenty DHB Region.



	Population	3 year coverage (n)	3 year coverage (%)
<b>Total</b>	53,101	41,656	78.4%
<b>European/other</b>	38,852	32,954	84.8%
<b>Maori</b>	11,717	6,878	58.7%
<b>Pacific</b>	611	405	66.3%
<b>Asian</b>	1,921	1,419	73.9%

#### 5. NCSP coverage - Bay of Plenty DHB Region - 30 September 2010 quarter

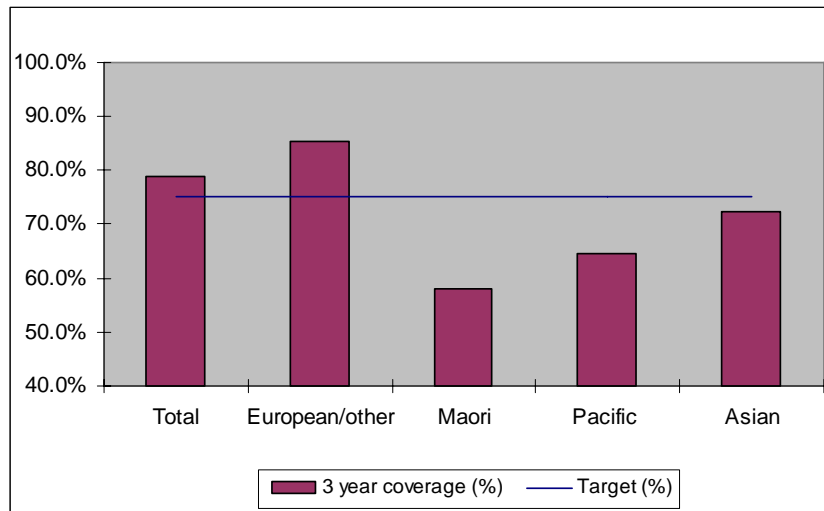
25-69 year old women screened in the three years to 30 September 2010, as a proportion of the hysterectomy adjusted 2006 Census based female population in the Bay of Plenty DHB Region.



	Population	3 year coverage (n)	3 year coverage (%)
<b>Total</b>	52,969	41,732	78.8%
<b>European/other</b>	38,764	33,090	85.4%
<b>Maori</b>	11,700	6,840	58.5%
<b>Pacific</b>	606	404	66.7%
<b>Asian</b>	1,899	1,398	73.6%

### 6. NCSP coverage - Bay of Plenty DHB Region - 30 June 2010 quarter

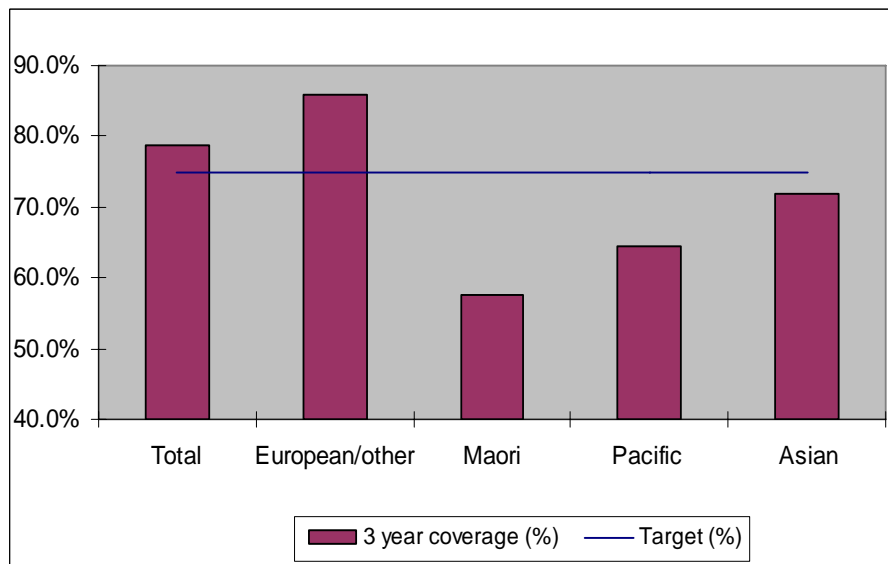
25-69 year old women screened in the three years to 30 June 2010, as a proportion of the hysterectomy adjusted 2006 Census based female population in the Bay of Plenty DHB Region.



	Population	3 year coverage (n)	3 year coverage (%)
<b>Total</b>	52,827	41,586	78.7%
<b>European/other</b>	38,676	33,057	85.5%
<b>Maori</b>	11,679	6,780	58.1%
<b>Pacific</b>	596	394	64.4%
<b>Asian</b>	1,876	1,355	72.2%

### 7. NCSP coverage - Bay of Plenty DHB Region - 31 March 2010 quarter

25-69 year old women screened in the three years to 31 March 2010, as a proportion of the hysterectomy adjusted 2006 Census based female population in the Bay of Plenty DHB Region.

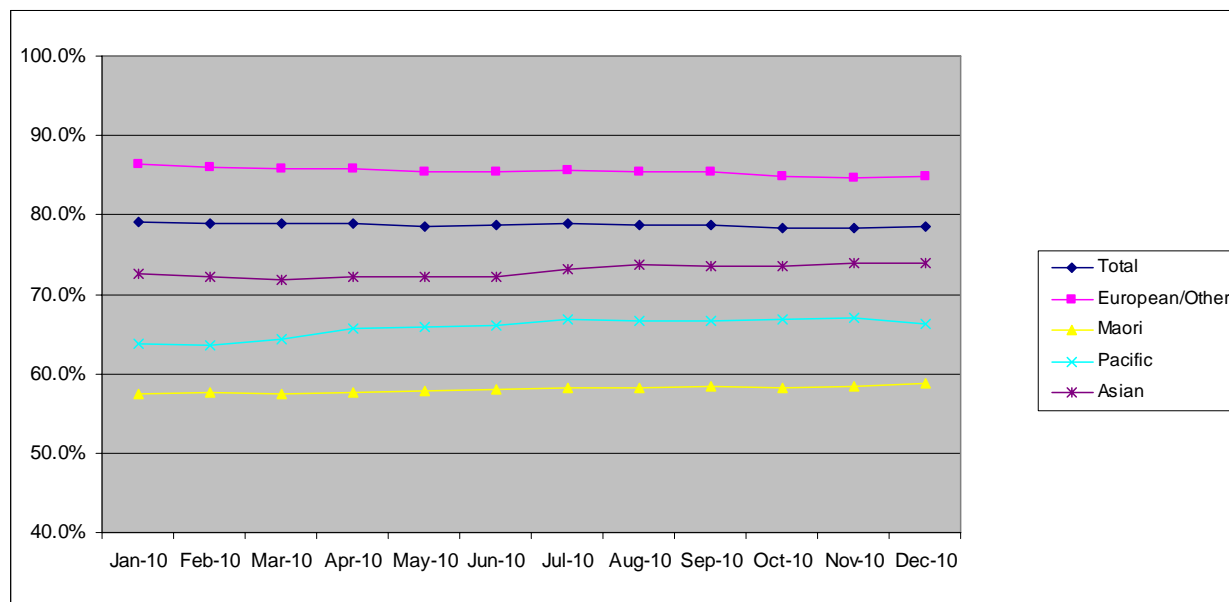


	Population	3 year coverage (n)	3 year coverage (%)
<b>Total</b>	52,656	41,516	78.8%
<b>European/other</b>	38,549	33,104	85.9%
<b>Maori</b>	11,656	6,696	57.4%
<b>Pacific</b>	593	382	64.4%
<b>Asian</b>	1,858	1,334	71.8%

## 8. NCSP summary monthly coverage in the year to 31 December 2010

### Bay of Plenty DHB

Monthly coverage trends for 25-69 year old women screened in the three years to 2010, as a proportion of the hysterectomy adjusted 2006 Census based female population.



Target: 75% for all population groups

### How is your DHB performing as at 31 December 2010?

Rank	DHB	December Quarter Performance	Change from previous quarter
1	Taranaki	83.5%	-0.1%
2	Wairarapa	81.2%	0.5%
3	Nelson Marlborough	79.7%	-0.4%
4	Capital and Coast	79.6%	0.1%
5	Otago*	79.4%	-0.4%
6	Hawke's Bay	78.6%	0.1%
<b>7</b>	<b>Bay of Plenty</b>	<b>78.4%</b>	<b>-0.4%</b>
8	Hutt Valley	77.7%	0.2%
9	South Canterbury	77.1%	-1.2%
10	Lakes	77.0%	0.2%
11	Southland*	76.0%	0.1%
12	Canterbury	75.2%	-0.2%
13	Waikato	74.9%	0.2%
14	Waitemata	74.8%	-0.2%
15	Northland	74.3%	-0.3%
16	Mid Central	73.9%	0.2%
17	Whanganui	73.9%	0.6%
18	Auckland	72.7%	0.2%
19	Tairāwhiti	70.9%	-0.3%
20	West Coast	70.0%	-0.3%
21	Counties Manukau	68.2%	-0.5%

\* On 1 May 2010 Southland and Otago DHBs merged to create Southern DHB.

## 9. Summary Comments

<b>3 yearly coverage to:</b>	<b>30 June 2011</b>	<b>30 June 2010</b>	<b>change</b>
<b>Total</b>	77.3%	78.7%	-1.4%
<b>European/other</b>	83.5%	85.5%	-2.0%
<b>Maori</b>	57.6%	58.1%	-0.5%
<b>Pacific</b>	66.4%	64.4%	2%
<b>Asian</b>	75.5%	72.2%	3.3%
<b>Ranking</b>	7 of 21	6 of 21	-1