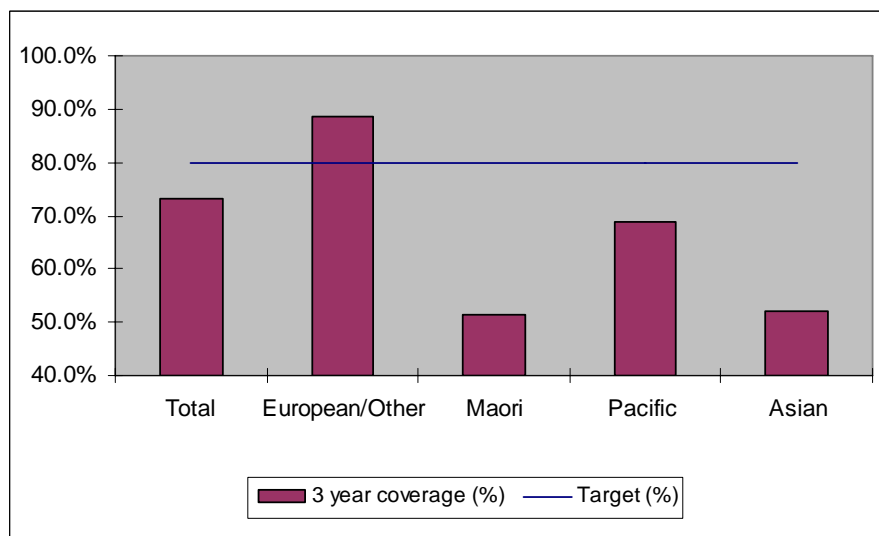


1. NCSP coverage - Auckland DHB Region - 30 June 2011 quarter

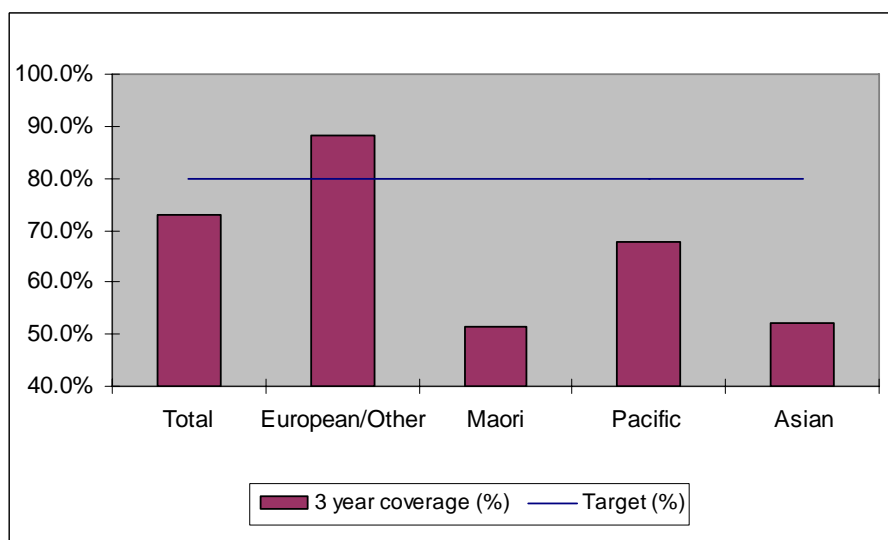
25-69 year old women screened in the three years to 30 June 2011, as a proportion of the hysterectomy adjusted 2006 Census based female population in the Auckland DHB Region.



	Population	3 year coverage (n)	3 year coverage (%)
Total	131,123	95,847	73.1%
European/other	69,727	61,786	88.6%
Maori	9,220	4,747	51.5%
Pacific	12,370	8,522	68.9%
Asian	39,806	20,792	52.2%

2. NCSP coverage - Auckland DHB Region - 31 March 2011 quarter

25-69 year old women screened in the three years to 31 March 2011, as a proportion of the hysterectomy adjusted 2006 Census based female population in the Auckland DHB Region.

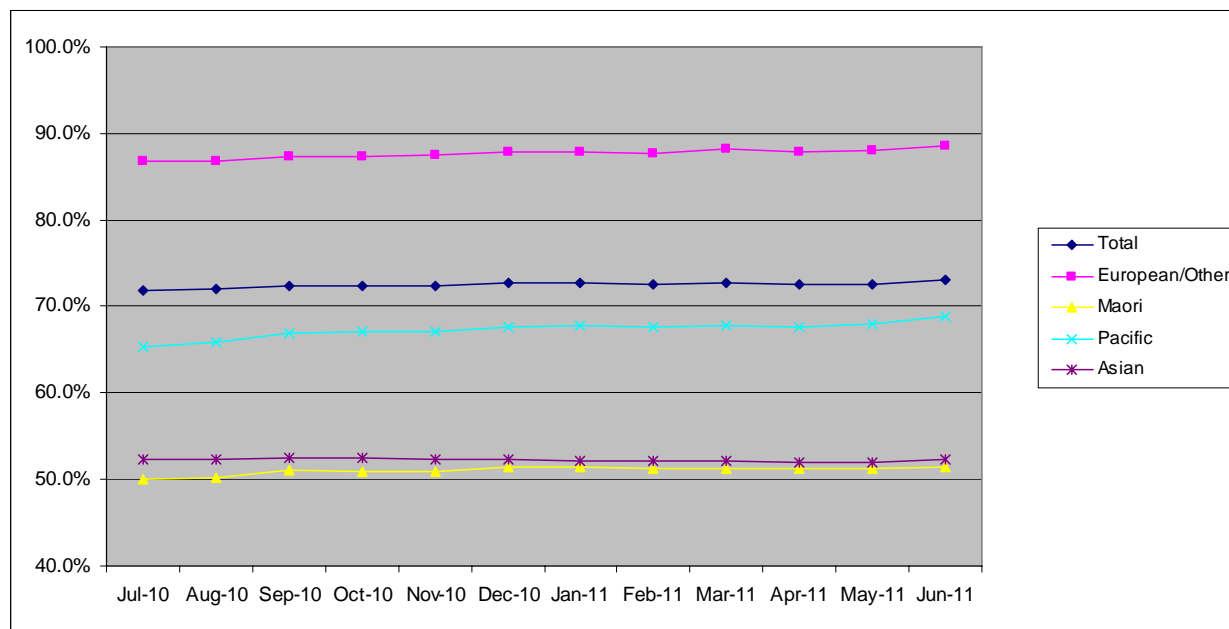


	Population	3 year coverage (n)	3 year coverage (%)
Total	130,472	94,951	72.8%
European/other	69,533	61,295	88.2%
Maori	9,188	4,717	51.3%
Pacific	12,383	8,397	67.8%
Asian	39,368	20,542	52.2%

3. NCSP summary monthly coverage in the year to 30 June 2011

Auckland DHB

Monthly coverage trends for 25-69 year old women screened in the three years to 30 June 2011, as a proportion of the hysterectomy adjusted 2006 Census based female population.



Target: 75% for all population groups to 31 December 2010 and 80% for all population groups from 1 January 2011.

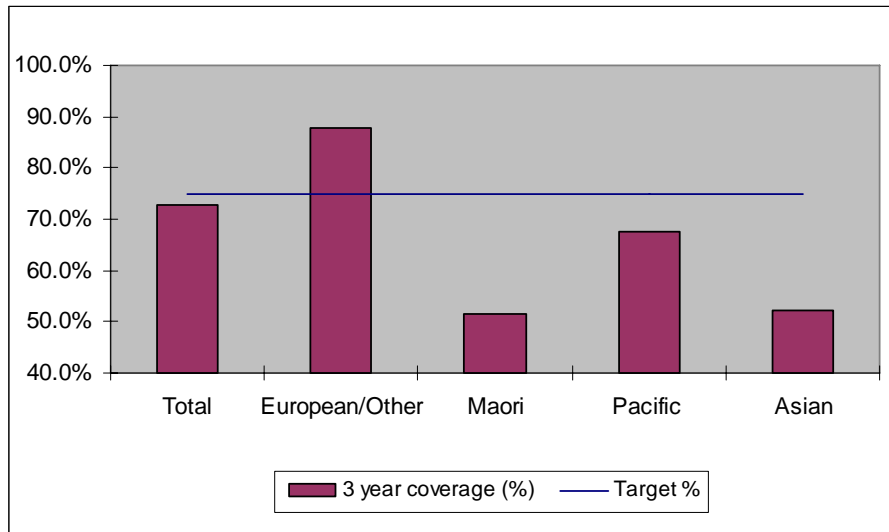
How was your DHB performing as at 30 June 2011?

Rank	DHB	June 2011 quarter performance	Change from previous quarter
1	Taranaki	82.9%	-0.1%
2	Wairarapa	81.7%	0.1%
3	Capital and Coast	79.3%	-0.3%
4	Nelson Marlborough	78.7%	-0.2%
5	Hawke's Bay	78.4%	-0.4%
6	Otago*	78.3%	-0.5%
7	Bay of Plenty	77.3%	-0.4%
8=	Hutt Valley	76.9%	-0.4%
8=	Lakes	76.9%	0.0%
10	Southland*	75.3%	-0.3%
11	Northland	75.1%	0.7%
12	Waikato	74.9%	0.1%
13	Whanganui	74.6%	0.6%
14	Tairāwhiti	74.5%	1.0%
15	Mid Central	74.3%	0.2%
16	Waitemata	74.0%	-0.5%
17	Canterbury	73.5%	-0.4%
18	Auckland	73.1%	0.3%
19	South Canterbury	72.9%	-2.2%
20	West Coast	68.5%	-1.0%
21	Counties Manukau	67.3%	-0.5%

* On 1 May 2010 Southland and Otago DHBs merged to create Southern DHB.

4. NCSP coverage - Auckland DHB Region - 31 December 2010 quarter

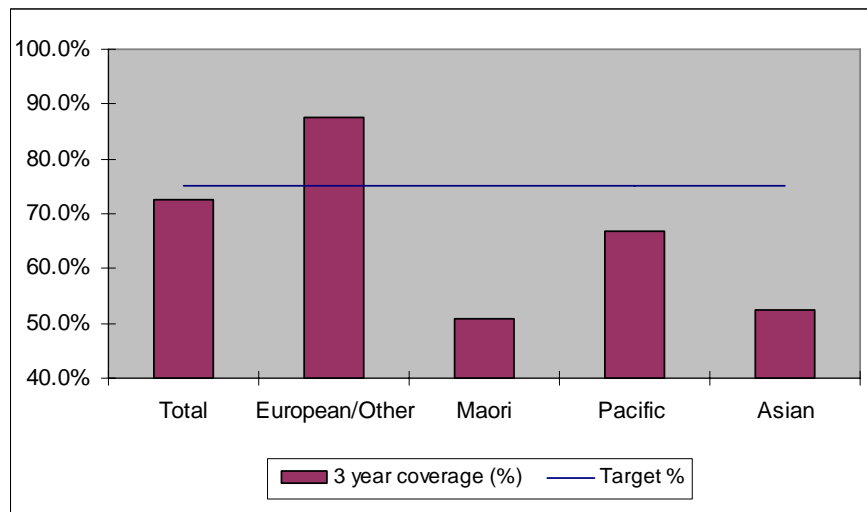
25-69 year old women screened in the three years to 31 December 2010, as a proportion of the hysterectomy adjusted 2006 Census based female population in the Auckland DHB Region.



	Population	3 year coverage (n)	3 year coverage (%)
Total	129,817	94,425	72.7%
European/other	69,336	60,970	87.9%
Maori	9,158	4,703	51.4%
Pacific	12,394	8,372	67.5%
Asian	38,929	20,380	52.4%

5. NCSP coverage - Auckland DHB Region - 30 September 2010 quarter

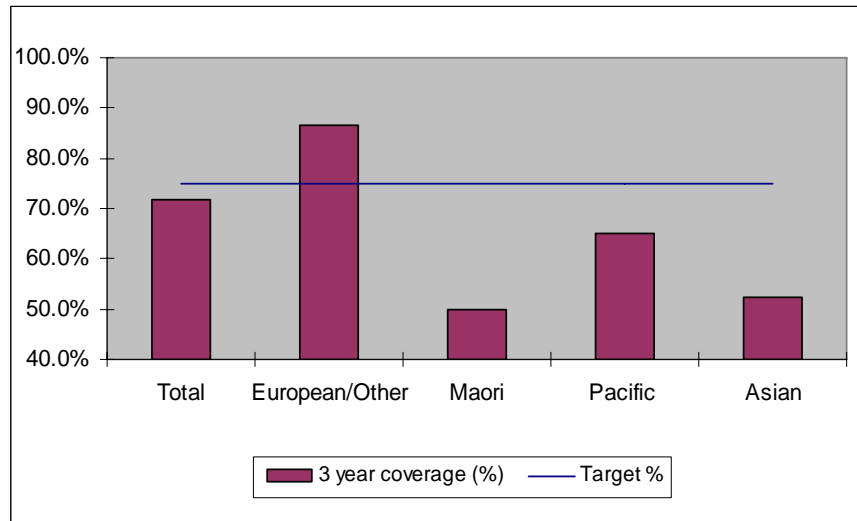
25-69 year old women screened in the three years to 30 September 2010, as a proportion of the hysterectomy adjusted 2006 Census based female population in the Auckland DHB Region.



	Population	3 year coverage (n)	3 year coverage (%)
Total	129,158	93,583	72.5%
European/other	69,141	60,438	87.4%
Maori	9,124	4,653	51.0%
Pacific	12,404	8,293	66.9%
Asian	38,489	20,199	52.5%

6. NCSP coverage - Auckland DHB Region - 30 June 2010 quarter

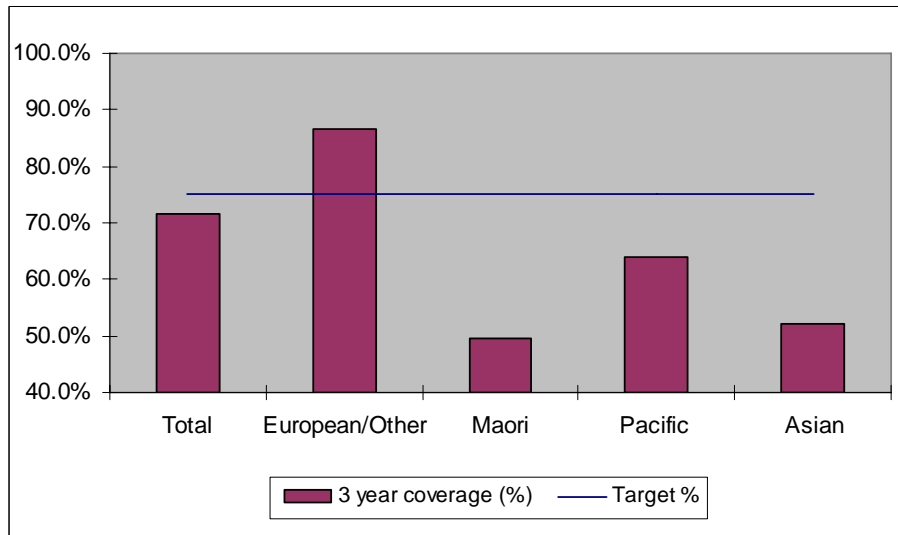
25-69 year old women screened in the three years to 30 June 2010, as a proportion of the hysterectomy adjusted 2006 Census based female population in the Auckland DHB Region.



	Population	3 year coverage (n)	3 year coverage (%)
Total	128,496	92,116	71.7%
European/other	68,944	59,604	86.5%
Maori	9,091	4,539	49.9%
Pacific	12,414	8,069	65.0%
Asian	38,047	19,904	52.3%

7. NCSP coverage - Auckland DHB Region - 31 March 2010 quarter

25-69 year old women screened in the three years to 31 March 2010, as a proportion of the hysterectomy adjusted 2006 Census based female population in the Auckland DHB Region.

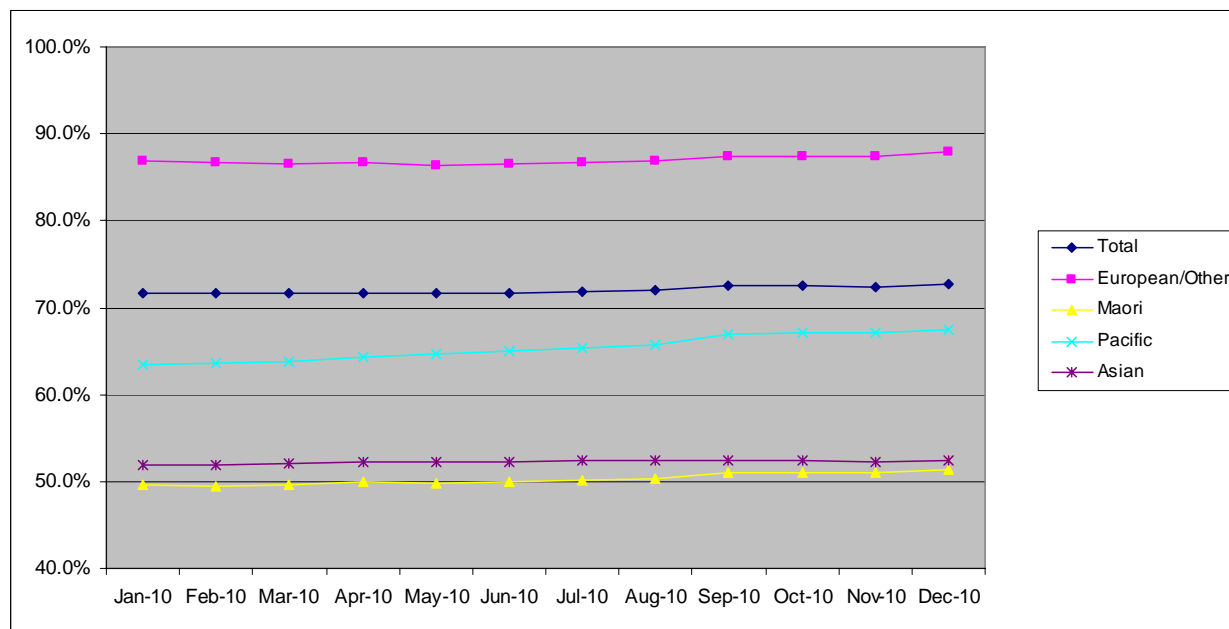


	Population	3 year coverage (n)	3 year coverage (%)
Total	127,698	91,410	71.6%
European/other	68,612	59,390	86.6%
Maori	9,061	4,500	49.7%
Pacific	12,418	7,925	63.8%
Asian	37,607	19,595	52.1%

8. NCSP summary monthly coverage in the year to 31 December 2010

Auckland DHB

Monthly coverage trends for 25-69 year old women screened in the three years to 2010, as a proportion of the hysterectomy adjusted 2006 Census based female population.



Target: 75% for all population groups

How was your DHB performing as at 31 December 2010?

Rank	DHB	December Quarter Performance	Change from previous quarter
1	Taranaki	83.5%	-0.1%
2	Wairarapa	81.2%	0.5%
3	Nelson Marlborough	79.7%	-0.4%
4	Capital and Coast	79.6%	0.1%
5	Otago*	79.4%	-0.4%
6	Hawke's Bay	78.6%	0.1%
7	Bay of Plenty	78.4%	-0.3%
8	Hutt Valley	77.7%	0.2%
9	South Canterbury	77.1%	-1.2%
10	Lakes	77.0%	0.2%
11	Southland*	76.0%	0.1%
12	Canterbury	75.2%	-0.2%
13	Waikato	74.9%	0.2%
14	Waitemata	74.8%	-0.2%
15	Northland	74.3%	-0.3%
16	Mid Central	73.9%	0.2%
17	Whanganui	73.9%	0.6%
18	Auckland	72.7%	0.2%
19	Tairāwhiti	70.9%	-0.3%
20	West Coast	70.0%	-0.3%
21	Counties Manukau	68.2%	-0.5%

* On 1 May 2010 Southland and Otago DHBs merged to create Southern DHB.

9. Summary Comments

3 yearly coverage to:	30 June 2011	30 June 2010	change
Total	73.1%	71.7%	1.4%
European/other	88.6%	86.5%	2.1%
Maori	51.5%	49.9%	1.6%
Pacific	68.9%	65.0%	3.9%
Asian	52.2%	52.3%	-0.1%
Ranking	18 of 21	19 of 21	1