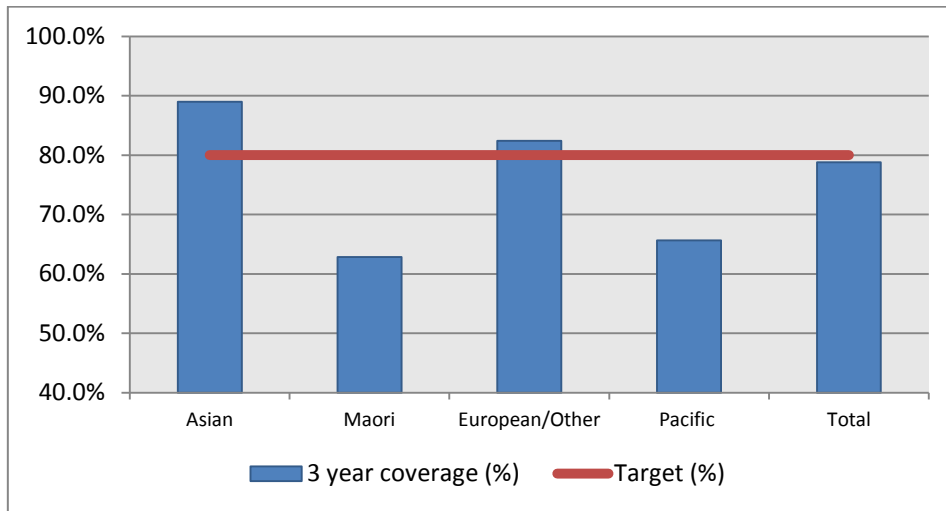


1. NCSP coverage – Hutt Valley DHB Region – 30 September 2013 quarter

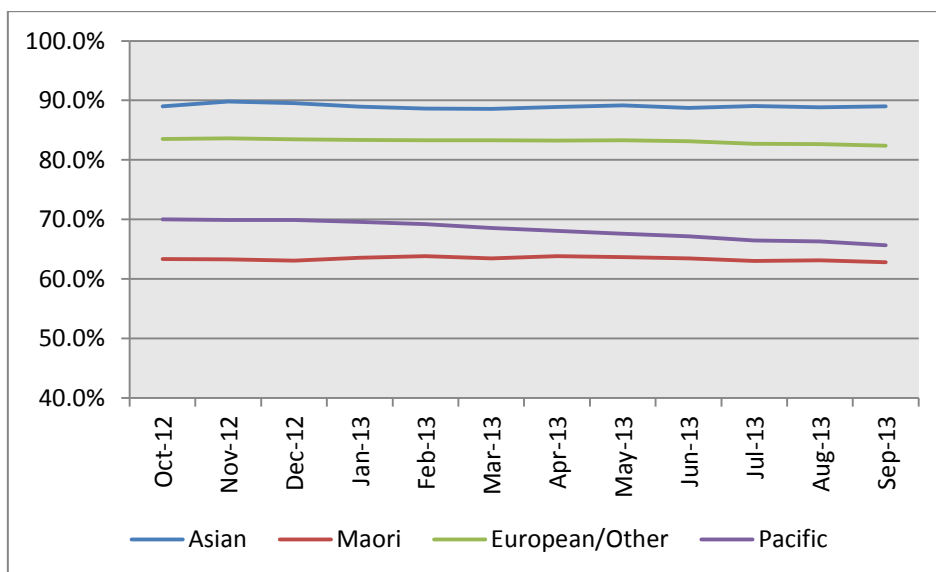
25-69 year old women screened in the three years to 30 September 2013, as a proportion of the hysterectomy adjusted 2006 Census based female population in the Hutt Valley DHB Region.



| | Population | 3 year coverage (n) | 3 year coverage (%) |
|----------------|------------|---------------------|---------------------|
| Asian | 3,326 | 2,960 | 89.0% |
| Maori | 5,538 | 3,479 | 62.8% |
| European/Other | 24,779 | 20,414 | 82.4% |
| Pacific | 2,694 | 1,769 | 65.7% |
| Total | 36,337 | 28,622 | 78.8% |

2. NCSP summary monthly coverage to 30 September 2013 – Hutt Valley DHB

Monthly coverage trends for 25-69 year old women screened in the three years to 30 September 2013 by ethnicity, as a proportion of the hysterectomy adjusted 2006 Census based female population in the Hutt Valley DHB region.



Target: 80% for all population groups by 31 December 2014.

3. How was your DHB performing as at 30 September 2013?

| Rank | DHB | Sep-13 | % change from Sep 2012 | Sep-12 |
|------|--------------------|--------|------------------------|--------|
| 1 | Taranaki | 85.6% | 0.4% | 85.2% |
| 2 | Hawkes Bay | 81.4% | 0.2% | 81.2% |
| 3 | Wairarapa | 81.4% | 0.0% | 81.4% |
| 4 | Nelson Marlborough | 81.1% | 0.1% | 81.0% |
| 5 | Bay of Plenty | 79.9% | 0.1% | 79.8% |
| 6 | Capital&Coast | 79.8% | -1.3% | 81.1% |
| 7 | Lakes | 79.3% | -1.1% | 80.4% |
| 8 | Southern | 79.0% | 0.2% | 78.8% |
| 9 | Hutt Valley | 78.8% | -1.1% | 79.9% |
| 10 | Tairāwhiti | 78.4% | -1.5% | 79.9% |
| 11 | West Coast | 77.7% | 1.4% | 76.3% |
| 12 | Waikato | 77.5% | 0.2% | 77.3% |
| 13 | Auckland | 77.1% | -0.1% | 77.2% |
| 14 | National | 76.9% | -0.1% | 77.0% |
| 15 | South Canterbury | 76.5% | 0.3% | 76.2% |
| 16 | Whanganui | 76.2% | -1.0% | 77.1% |
| 17 | Northland | 75.8% | -0.6% | 76.4% |
| 18 | Mid Central | 75.8% | 0.4% | 75.4% |
| 19 | Waitemata | 75.8% | 0.3% | 75.5% |
| 20 | Canterbury | 75.4% | -0.2% | 75.6% |
| 21 | Counties Manukau | 69.6% | 0.0% | 69.6% |

4. NCSP summary monthly coverage to 30 September 2013 – DHB vs National

Monthly coverage trends for 25-69 year old women screened in the three years to 30 September 2013, as a proportion of the hysterectomy adjusted 2006 Census based female population in New Zealand.

