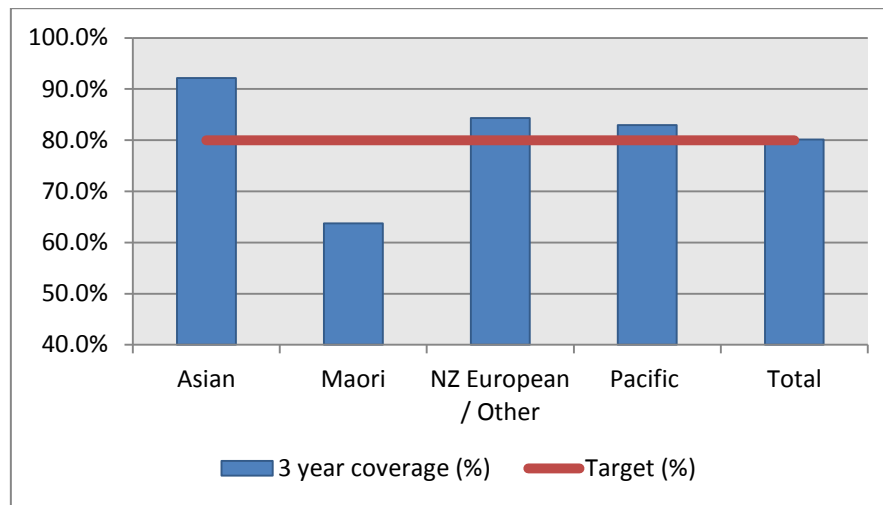


1. NCSP coverage – Bay of Plenty DHB Region – 31 Mar 2013 quarter

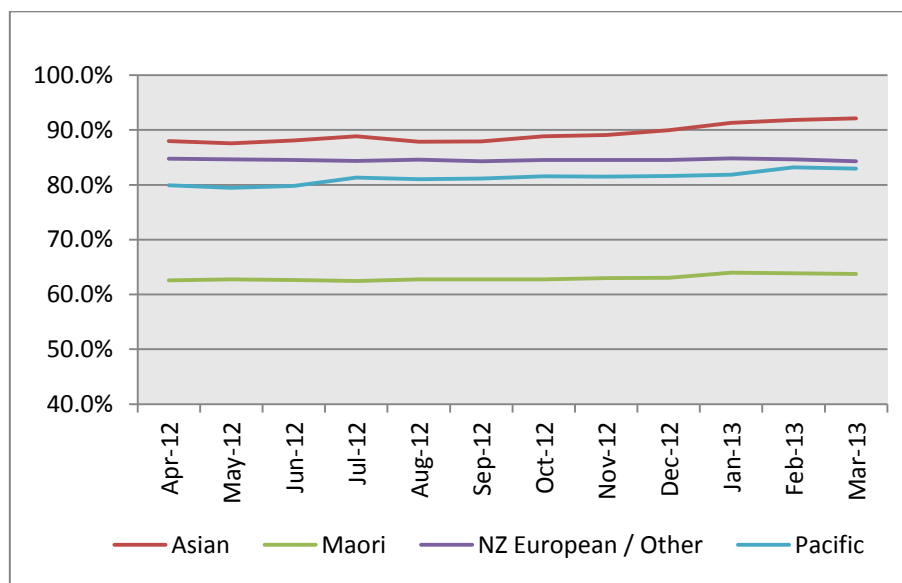
25-69 year old women screened in the three years to 31 March 2013, as a proportion of the hysterectomy adjusted 2006 Census based female population in the Bay of Plenty DHB Region.



	Population	3 year coverage (n)	3 year coverage (%)
Asian	1,965	1,810	92.1%
Maori	11,386	7,257	63.7%
NZ European / Other	39,081	32,948	84.3%
Pacific	574	476	82.9%
Total	53,006	42,491	80.2%

2. NCSP summary monthly coverage to 31 Mar 2013 – Bay of Plenty DHB

Monthly coverage trends for 25-69 year old women screened in the three years to 31 March 2013 by Ethnicity, as a proportion of the hysterectomy adjusted 2006 Census based female population in the Bay of Plenty DHB region.



Target: 80% for all population groups by 31 December 2014.

3. How was your DHB performing as at 31 March 2013?

Rank	DHB	Mar-13	% change from Mar 2012	Mar-12
1	Taranaki	85.7%	1.1%	84.6%
2	Wairarapa	81.9%	-0.2%	82.1%
3	Hawkes Bay	81.7%	1.8%	79.9%
4	Nelson Marlborough	80.8%	1.1%	79.7%
5	Capital&Coast	80.6%	-1.1%	81.7%
6	Bay of Plenty	80.2%	0.5%	79.7%
7	Lakes	80.1%	0.4%	79.7%
8	Hutt Valley	79.7%	-0.3%	80.0%
9	Tairāwhiti	79.0%	1.6%	77.4%
10	Southern	78.8%	0.6%	78.2%
11	West Coast	77.7%	5.5%	72.2%
12=	Waikato	77.3%	0.4%	76.9%
12=	Auckland	77.3%	1.1%	76.2%
14	Whanganui	76.5%	-0.6%	77.1%
15	South Canterbury	76.1%	0.8%	75.3%
16	Northland	76.0%	-0.8%	76.8%
17	Waitemata	75.6%	0.2%	75.4%
18	Mid Central	75.4%	-0.2%	75.6%
19	Canterbury	75.1%	-0.6%	75.7%
20	Counties Manukau	69.4%	0.1%	69.3%

4. NCSP summary monthly coverage to 31 Mar 2013 – National

Monthly coverage trends for 25-69 year old women screened in the three years to 31 March 2013, as a proportion of the hysterectomy adjusted 2006 Census based female population in New Zealand.

