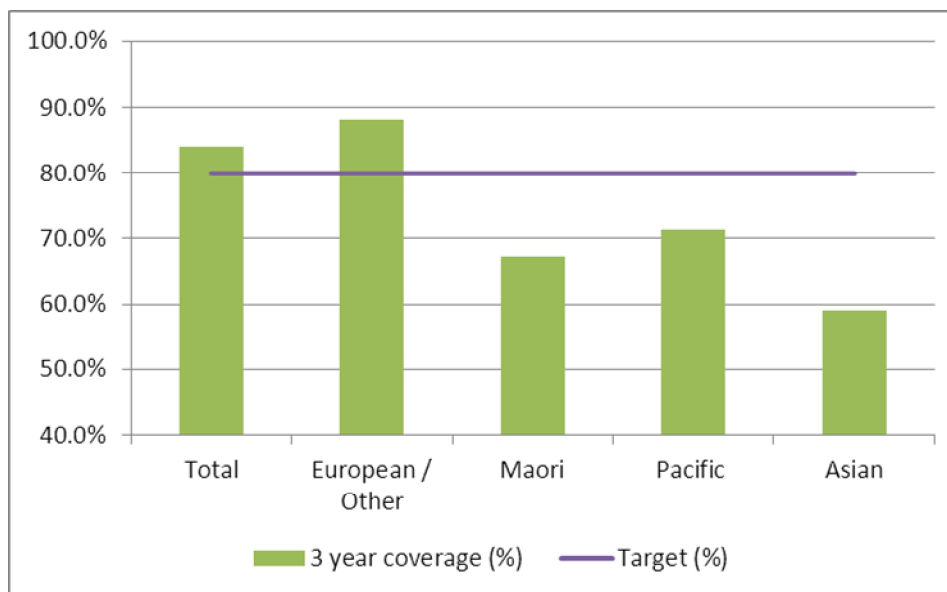


### 1. NCSP coverage – Taranaki DHB Region – 31 March 2012 quarter

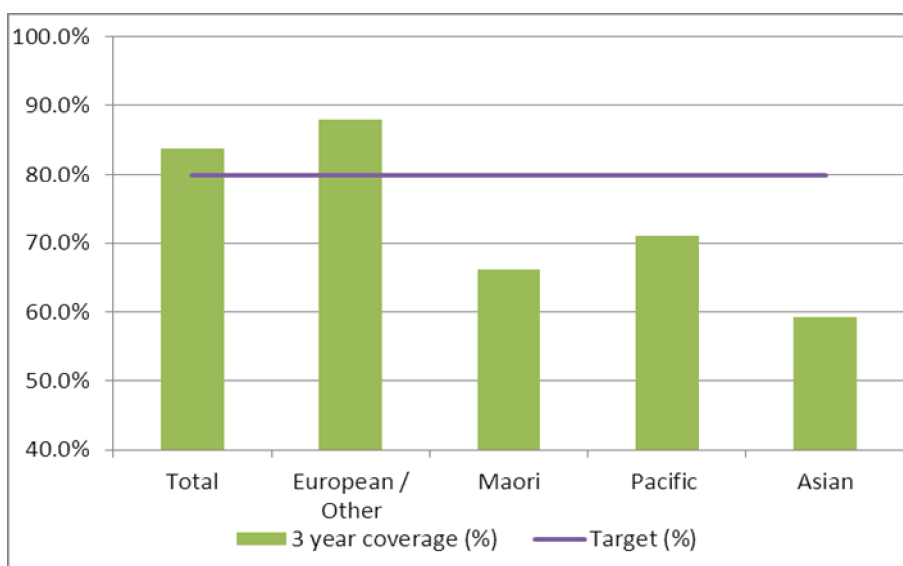
25-69 year old women screened in the three years to 31 March 2012, as a proportion of the hysterectomy adjusted 2006 Census based female population in the Taranaki DHB Region.



	Population	3 year coverage (n)	3 year coverage (%)
<b>Total</b>	27,022	22,701	84.0%
<b>European/other</b>	22,030	19,414	88.1%
<b>Maori</b>	3,831	2,573	67.2%
<b>Pacific</b>	234	167	71.4%
<b>Asian</b>	927	547	59.0%

### 2. NCSP coverage – Taranaki DHB Region – 31 December 2011 quarter

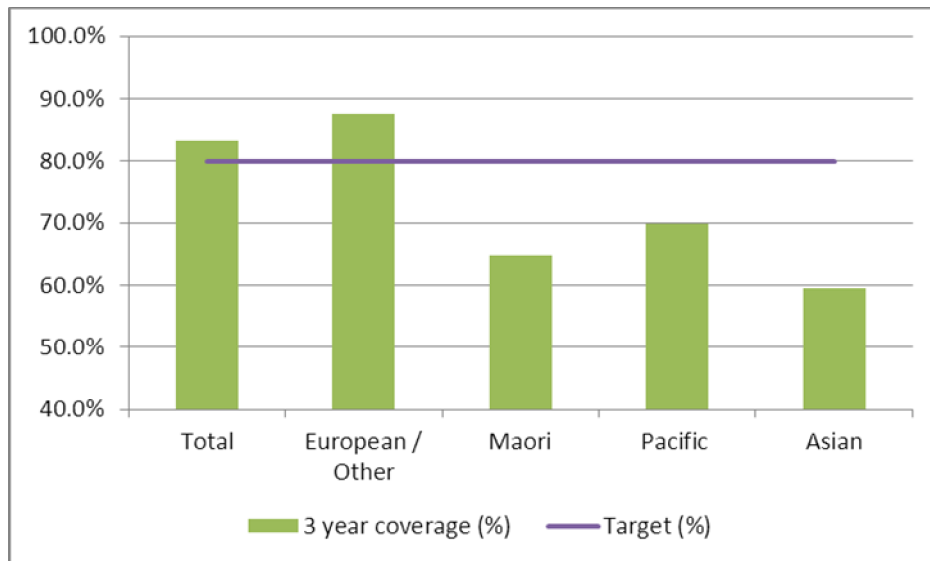
25-69 year old women screened in the three years to 31 December 2011, as a proportion of the hysterectomy adjusted 2006 Census based female population in the Taranaki DHB Region.



	Population	3 year coverage (n)	3 year coverage (%)
<b>Total</b>	27,011	22,649	83.9%
<b>European/other</b>	22,050	19,414	88.0%
<b>Maori</b>	3,818	2,530	66.3%
<b>Pacific</b>	231	164	71.0%
<b>Asian</b>	912	541	59.3%

### 3. NCSP coverage – Taranaki DHB Region – 30 September 2011 quarter

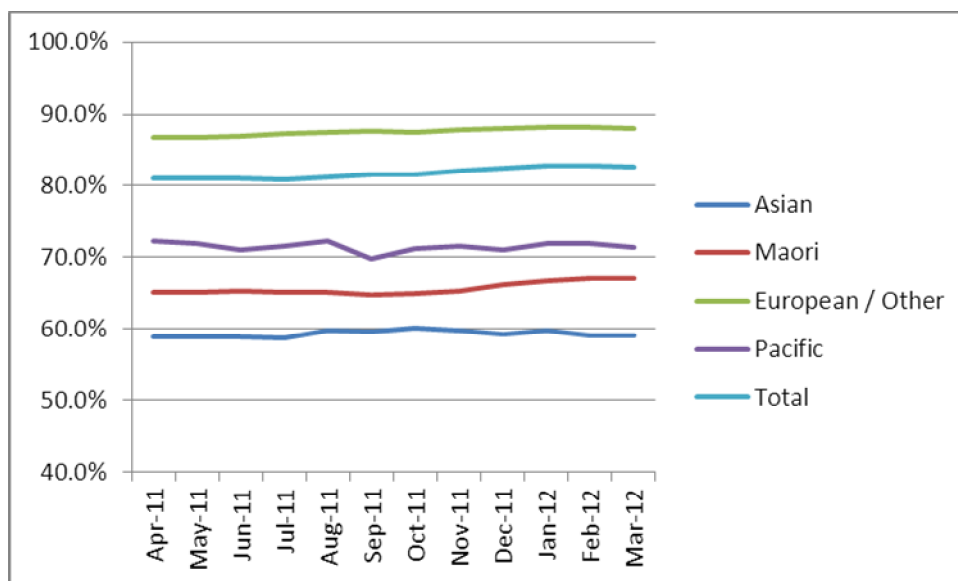
25-69 year old women screened in the three years to 30 September 2011, as a proportion of the hysterectomy adjusted 2006 Census based female population in the Taranaki DHB Region.



	Population	3 year coverage (n)	3 year coverage (%)
<b>Total</b>	26,994	22,493	83.3%
<b>European/other</b>	22,068	19,339	87.6%
<b>Maori</b>	3,804	2,463	64.7%
<b>Pacific</b>	228	159	69.7%
<b>Asian</b>	894	532	59.5%

### 4. NCSP summary monthly coverage to 31 March 2012 – Taranaki DHB

Monthly coverage trends for 25-69 year old women screened in the three years to 31 March 2012, as a proportion of the hysterectomy adjusted 2006 Census based female population in the Taranaki DHB region.



Target: 80% for all population groups by 31 December 2014.

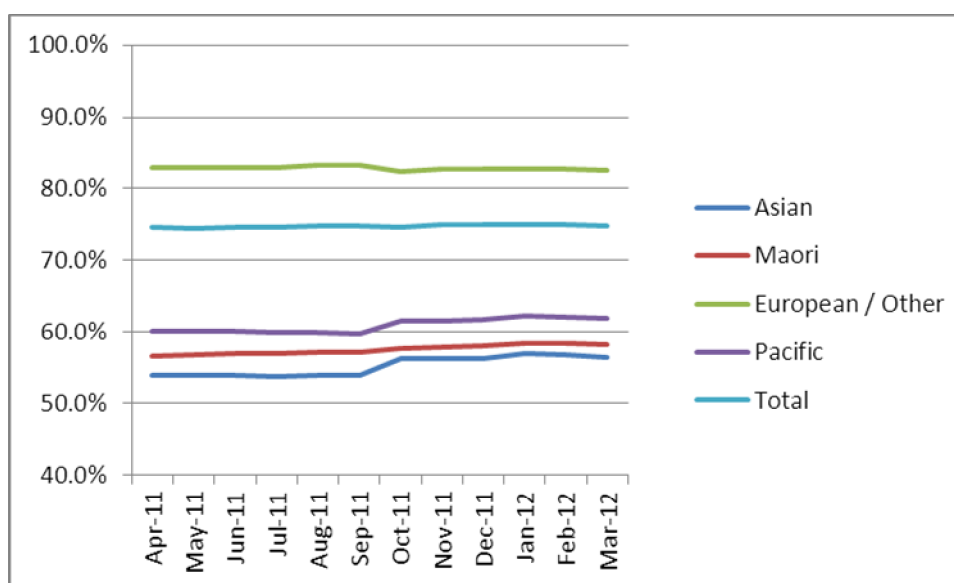
## 5. How was your DHB performing as at 31 March 2012?

Rank	DHB	March 12 quarter performance (%)	% change from April 2011
<b>1</b>	<b>Taranaki</b>	<b>84.0%</b>	<b>1.2%</b>
2	Wairarapa	82.3%	1.1%
3	Capital and Coast	79.8%	0.6%
4	Nelson Marlborough	79.4%	0.9%
5	Southern (Otago)	79.0%	0.7%
6	Hawke's Bay	78.7%	0.5%
7	Hutt Valley	77.9%	0.9%
8	Bay of Plenty	77.5%	0.1%
9	Lakes	77.3%	0.7%
10	Southern (Southland)	76.8%	1.5%
11	Whanganui	75.6%	1.7%
12	Waikato	75.4%	0.7%
13	South Canterbury	75.2%	0.2%
14	Tairāwhiti	74.9%	1.4%
15	Northland	74.8%	0.6%
16	Mid Central	74.1%	0.2%
17	Auckland	73.7%	1.2%
18	Canterbury	73.4%	-0.2%
19	Waitemata	73.3%	-0.9%
20	West Coast	70.8%	1.6%
21	Counties Manukau	66.5%	-0.8%

On 1 May 2010 Southland and Otago DHBs merged to create Southern DHB.

## 6. NCSP summary monthly coverage to 31 March 2012 – National

Monthly coverage trends for 25-69 year old women screened in the three years to 31 March 2012, as a proportion of the hysterectomy adjusted 2006 Census based female population in New Zealand.



Target: 80% for all population groups by 31 December 2014.