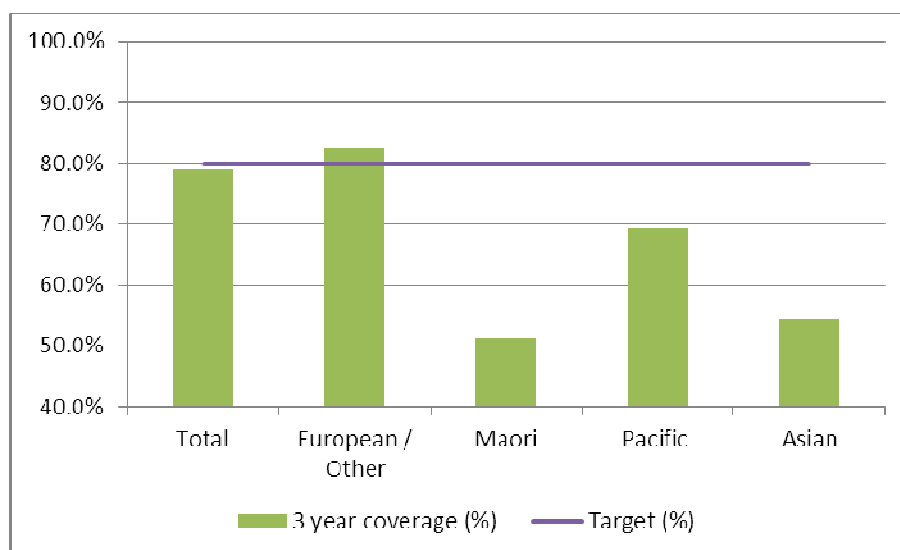


1. NCSP coverage – Southern DHB Otago Region – 31 March 2012 quarter

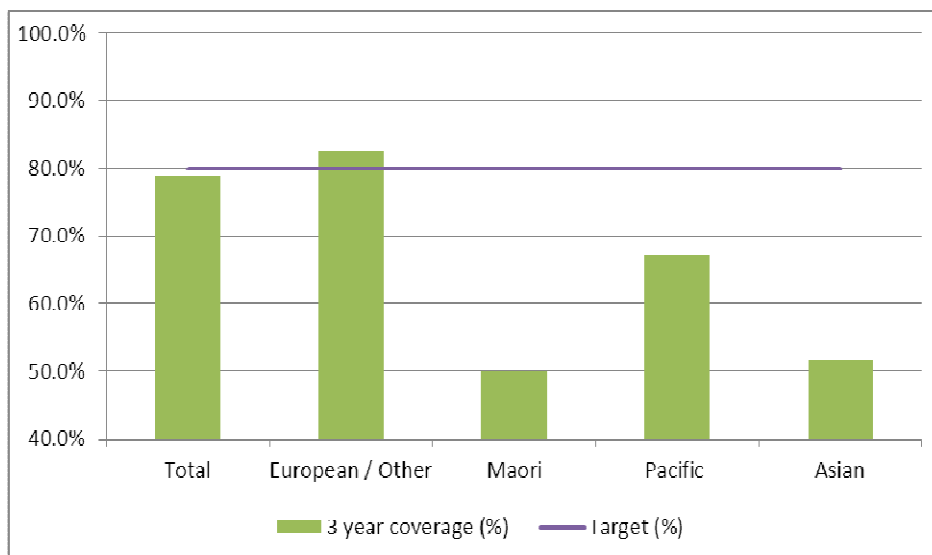
25-69 year old women screened in the three years to 31 March 2012, as a proportion of the hysterectomy adjusted 2006 Census based female population in the Southern DHB Otago Region.



	Population	3 year coverage (n)	3 year coverage (%)
Total	46,950	37,110	79.0%
European/other	41,179	33,969	82.5%
Maori	2,889	1,481	51.3%
Pacific	630	437	69.4%
Asian	2,252	1,223	54.3%

2. NCSP coverage – Southern DHB Otago Region – 31 December 2011 quarter

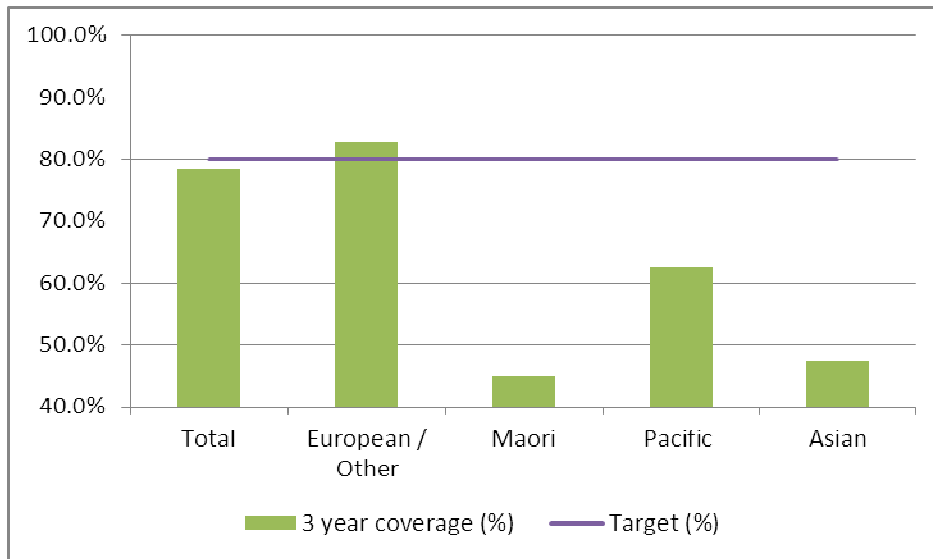
25-69 year old women screened in the three years to 31 December 2011, as a proportion of the hysterectomy adjusted 2006 Census based female population in the Southern DHB Otago Region.



	Population	3 year coverage (n)	3 year coverage (%)
Total	46,913	37,048	79.0%
European/other	41,188	34,022	82.6%
Maori	2,875	1,442	50.2%
Pacific	622	423	68.0%
Asian	2,228	1,161	52.1%

3. NCSP coverage – Southern DHB Otago Region – 30 September 2011 quarter

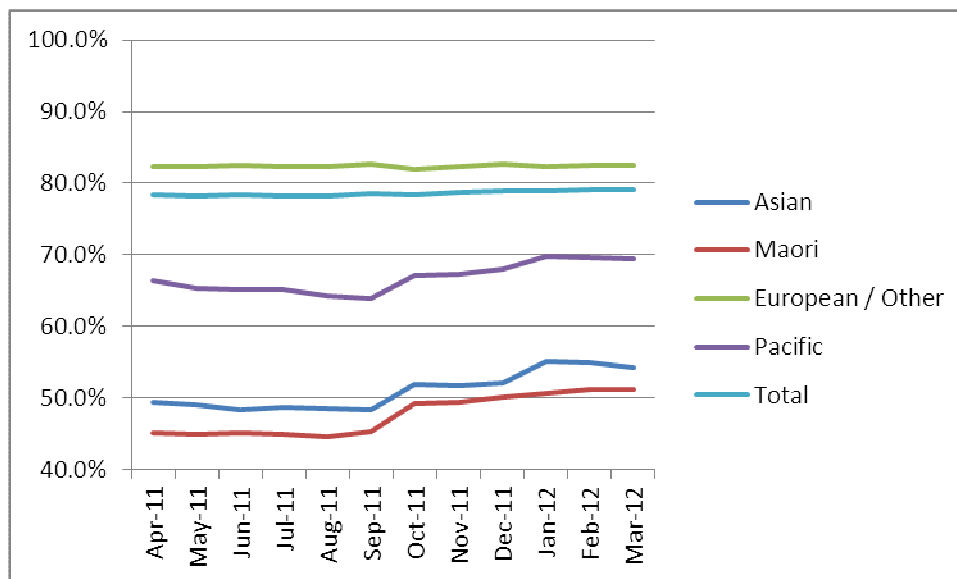
25-69 year old women screened in the three years to 30 September 2011, as a proportion of the hysterectomy adjusted 2006 Census based female population in the Southern DHB Otago Region.



	Population	3 year coverage (n)	3 year coverage (%)
Total	46,878	36,784	78.5%
European/other	41,196	34,030	82.6%
Maori	2,865	1,295	45.2%
Pacific	615	393	63.9%
Asian	2,202	1,066	48.4%

4. NCSP summary monthly coverage to 31 March 2012 – Southern DHB (Otago)

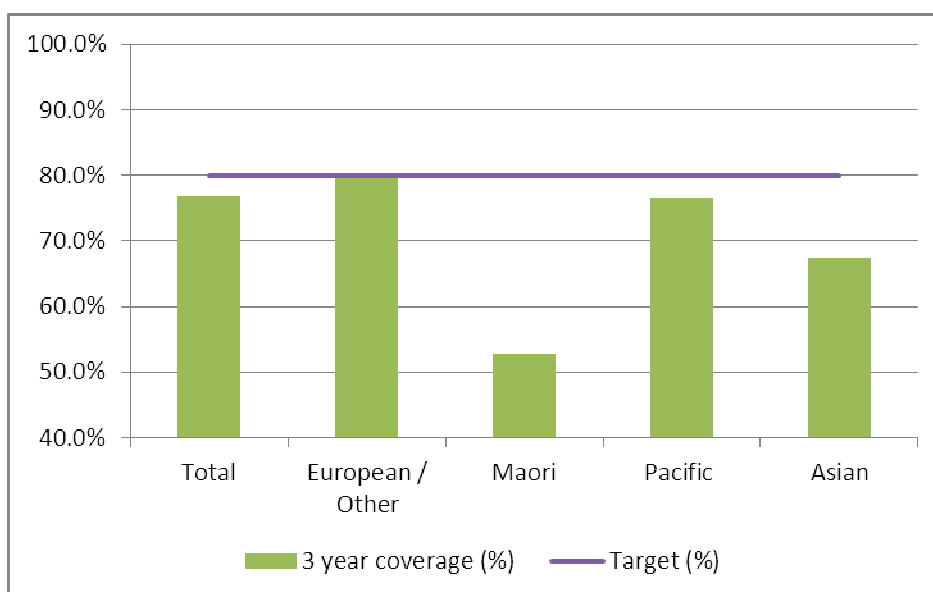
Monthly coverage trends for 25-69 year old women screened in the three years to 31 March 2012, as a proportion of the hysterectomy adjusted 2006 Census based female population in the Southern DHB Otago Region.



Target: 80% for all population groups by 31 December 2014.

5. NCSP coverage – Southern DHB Southland Region – 31 March 2012 quarter

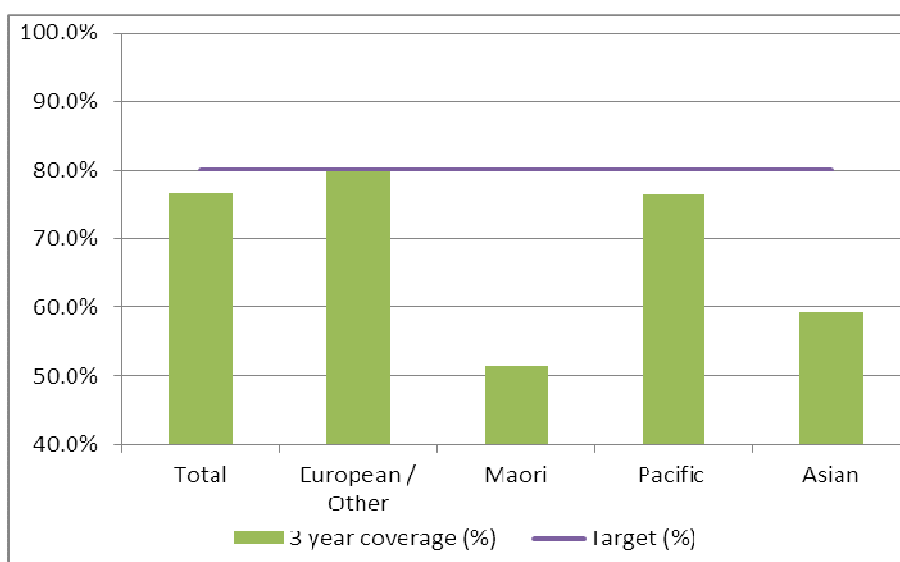
25-69 year old women screened in the three years to 31 March 2012, as a proportion of the hysterectomy adjusted 2006 Census based female population in the Southern DHB Southland Region.



	Population	3 year coverage (n)	3 year coverage (%)
Total	29,074	22,326	76.8%
European/other	24,936	19,926	79.9%
Maori	2,845	1,500	52.7%
Pacific	304	233	76.6%
Asian	989	667	67.4%

6. NCSP coverage – Southern DHB Southland Region – 31 December 2011 quarter

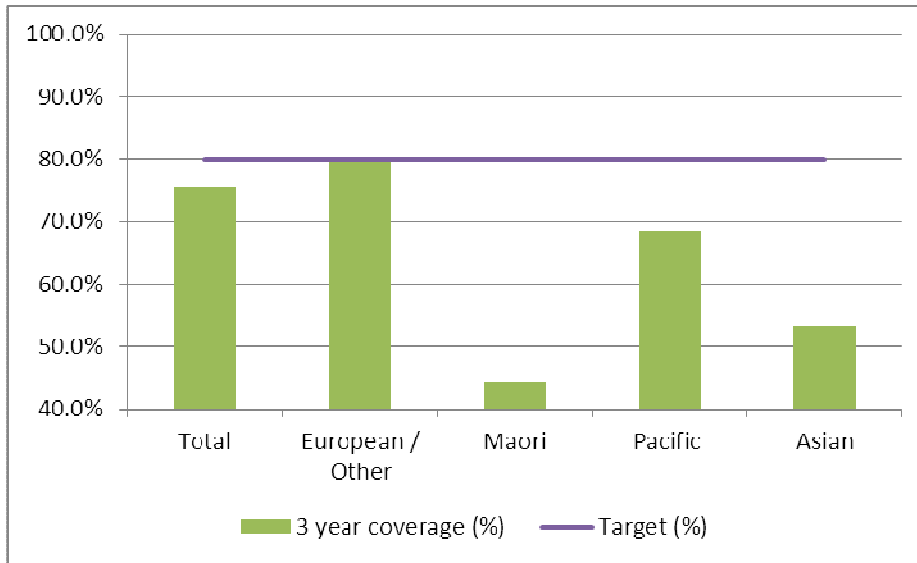
25-69 year old women screened in the three years to 31 December 2011, as a proportion of the hysterectomy adjusted 2006 Census based female population in the Southern DHB Southland Region.



	Population	3 year coverage (n)	3 year coverage (%)
Total	29,071	22,261	76.6%
European/other	24,943	19,986	80.1%
Maori	2,836	1,456	51.3%
Pacific	306	234	76.5%
Asian	986	585	59.3%

7. NCSP coverage – Southern DHB Southland Region – 30 September 2011 quarter

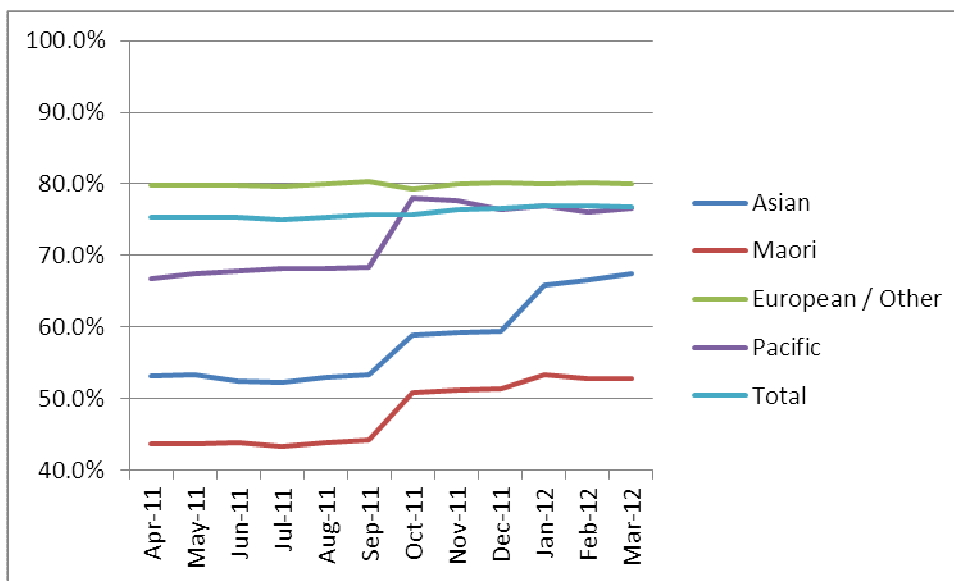
25-69 year old women screened in the three years to 30 September 2011, as a proportion of the hysterectomy adjusted 2006 Census based female population in the Southern DHB Southland Region.



	Population	3 year coverage (n)	3 year coverage (%)
Total	29,062	22,011	75.7%
European/other	24,947	20,027	80.3%
Maori	2,827	1,252	44.3%
Pacific	304	208	68.4%
Asian	984	524	53.3%

8. NCSP summary monthly coverage to 31 March 2012 – Southern DHB (Southland)

Monthly coverage trends for 25-69 year old women screened in the three years to 31 March 2012, as a proportion of the hysterectomy adjusted 2006 Census based female population in the Southern DHB Southland region.



Target: 80% for all population groups by 31 December 2014.

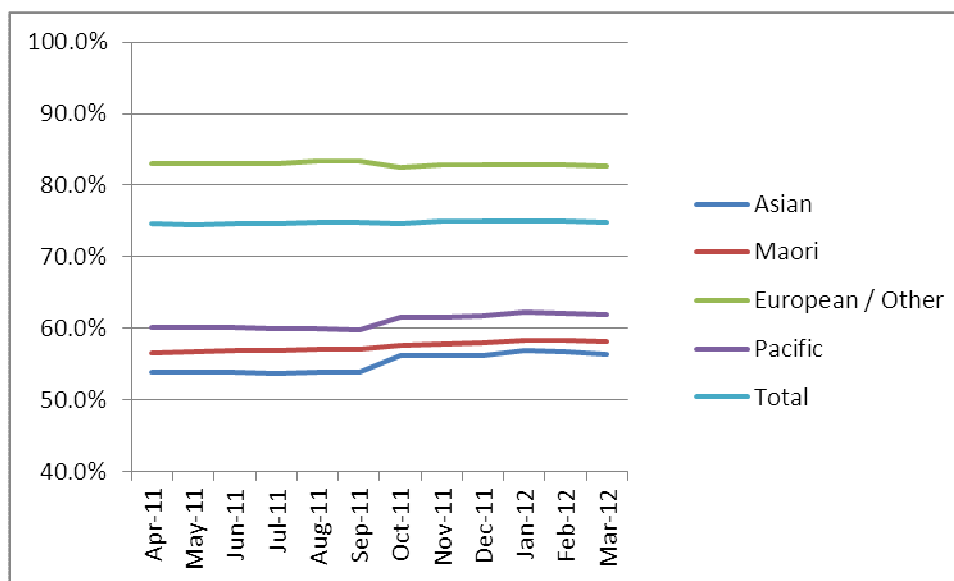
9. How was your DHB performing as at 31 March 2012?

Rank	DHB	March 12 quarter performance (%)	% change from April 2011
1	Taranaki	84.0%	1.2%
2	Wairarapa	82.3%	1.1%
3	Capital and Coast	79.8%	0.6%
4	Nelson Marlborough	79.4%	0.9%
5	Southern (Otago)	79.0%	0.7%
6	Hawke's Bay	78.7%	0.5%
7	Hutt Valley	77.9%	0.9%
8	Bay of Plenty	77.5%	0.1%
9	Lakes	77.3%	0.7%
10	Southern (Southland)	76.8%	1.5%
11	Whanganui	75.6%	1.7%
12	Waikato	75.4%	0.7%
13	South Canterbury	75.2%	0.2%
14	Tairāwhiti	74.9%	1.4%
15	Northland	74.8%	0.6%
16	Mid Central	74.1%	0.2%
17	Auckland	73.7%	1.2%
18	Canterbury	73.4%	-0.2%
19	Waitemata	73.3%	-0.9%
20	West Coast	70.8%	1.6%
21	Counties Manukau	66.5%	-0.8%

On 1 May 2010 Southland and Otago DHBs merged to create Southern DHB.

10. NCSP summary monthly coverage to 31 March 2012 – National

Monthly coverage trends for 25-69 year old women screened in the three years to 31 March 2012, as a proportion of the hysterectomy adjusted 2006 Census based female population in New Zealand.



Target: 80% for all population groups by 31 December 2014.