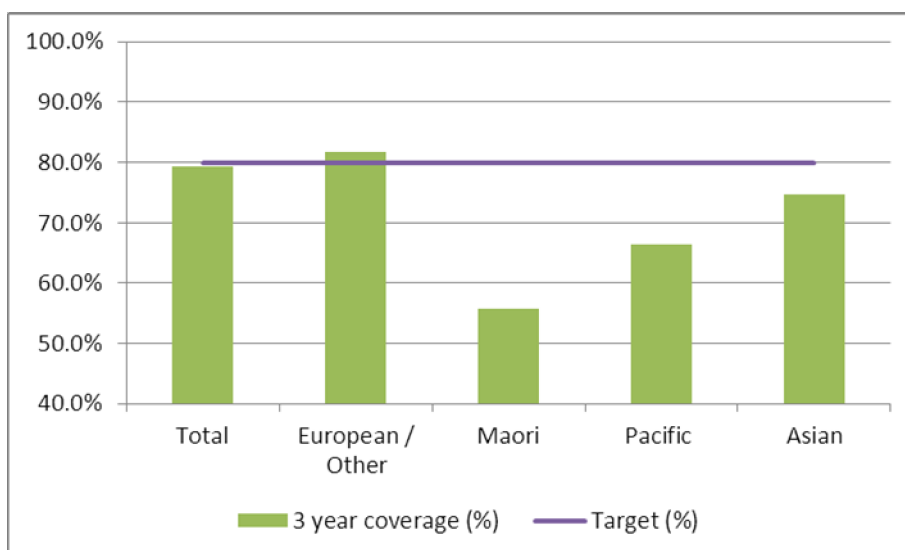


## 1. NCSP coverage – Nelson Marlborough DHB Region – 31 March 2012 quarter

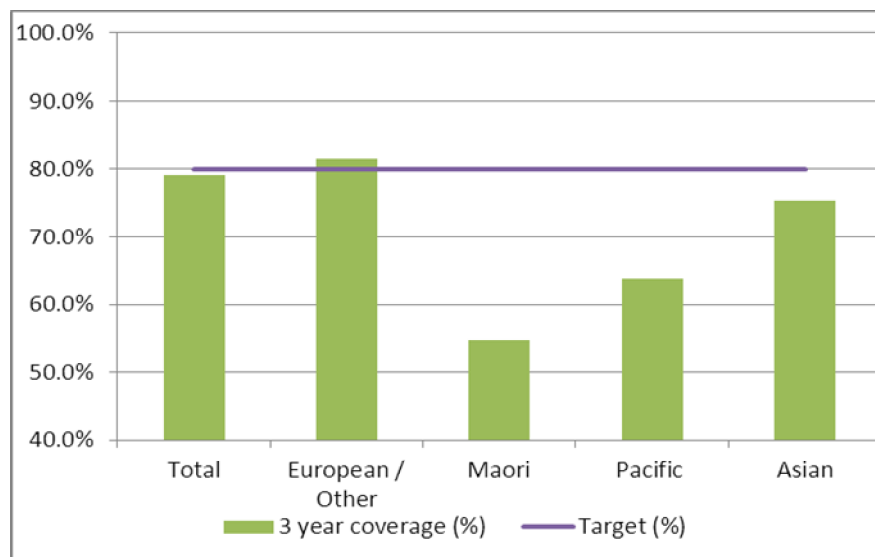
25-69 year old women screened in the three years to 31 March 2012, as a proportion of the hysterectomy adjusted 2006 Census based female population in the Nelson Marlborough DHB Region.



	Population	3 year coverage (n)	3 year coverage (%)
<b>Total</b>	35,903	28,515	79.4%
<b>European/other</b>	31,714	25,958	81.9%
<b>Maori</b>	2,873	1,602	55.8%
<b>Pacific</b>	345	229	66.4%
<b>Asian</b>	971	726	74.8%

## 2. NCSP coverage – Nelson Marlborough DHB Region – 31 December 2011 quarter

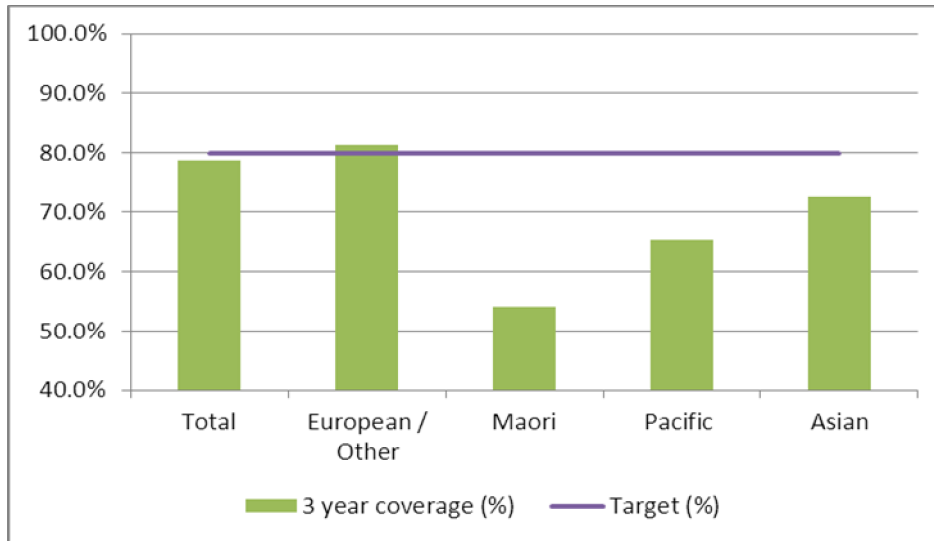
25-69 year old women screened in the three years to 31 December 2011, as a proportion of the hysterectomy adjusted 2006 Census based female population in the Nelson Marlborough DHB Region.



	Population	3 year coverage (n)	3 year coverage (%)
<b>Total</b>	35,903	28,407	79.1%
<b>European/other</b>	31,726	25,892	81.6%
<b>Maori</b>	2,857	1,561	54.6%
<b>Pacific</b>	347	221	63.7%
<b>Asian</b>	973	733	75.3%

### 3. NCSP coverage – Nelson Marlborough DHB Region – 30 September 2011 quarter

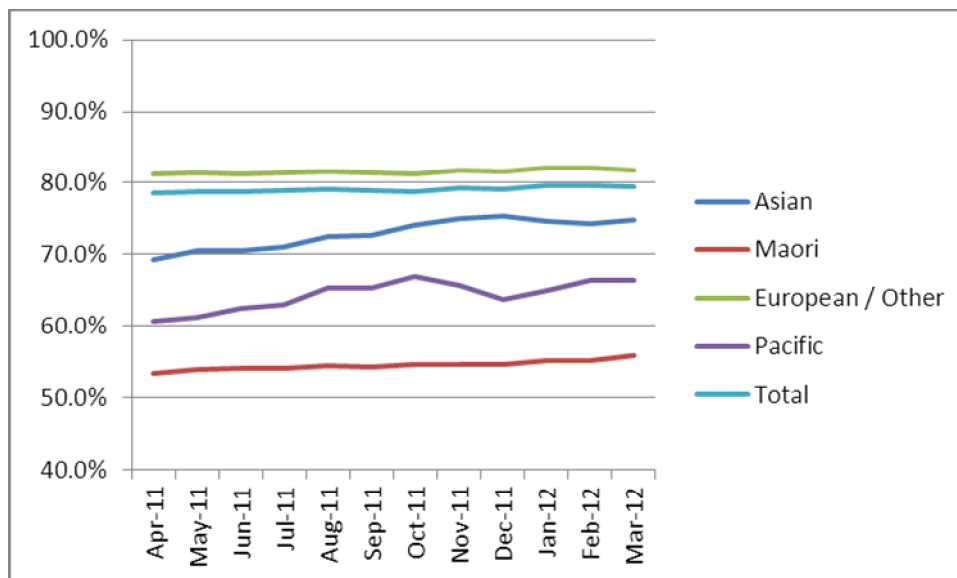
25-69 year old women screened in the three years to 30 September 2011, as a proportion of the hysterectomy adjusted 2006 Census based female population in the Nelson Marlborough DHB Region.



	Population	3 year coverage (n)	3 year coverage (%)
<b>Total</b>	35,897	28,296	78.8%
<b>European/other</b>	31,735	25,824	81.4%
<b>Maori</b>	2,844	1,540	54.1%
<b>Pacific</b>	346	226	65.3%
<b>Asian</b>	972	706	72.6%

### 4. NCSP summary monthly coverage to 31 March 2012 – Nelson Marlborough DHB

Monthly coverage trends for 25-69 year old women screened in the three years to 31 March 2012, as a proportion of the hysterectomy adjusted 2006 Census based female population in the Nelson Marlborough DHB region.



Target: 80% for all population groups by 31 December 2014.

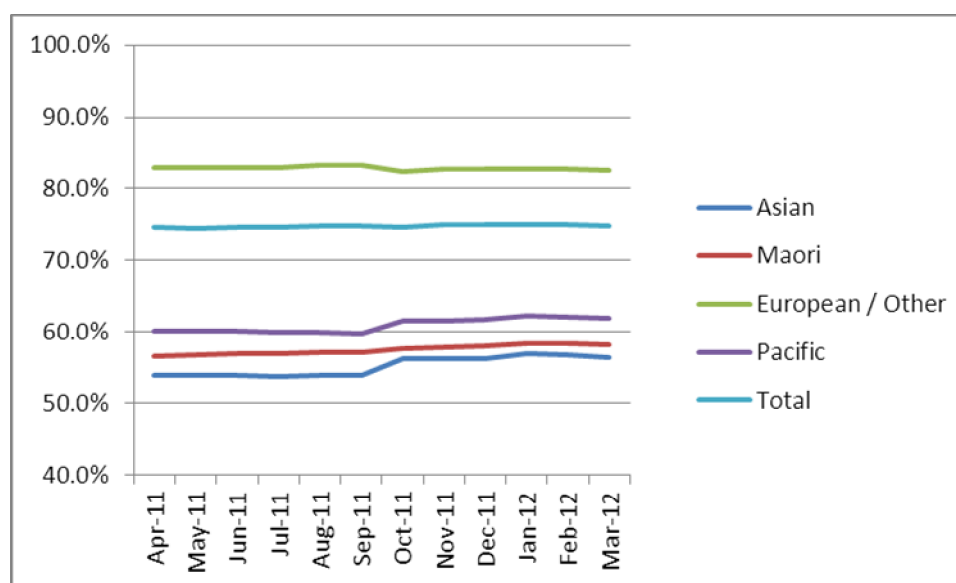
## 5. How was your DHB performing as at 31 March 2012?

Rank	DHB	March 12 quarter performance (%)	% change from April 2011
1	Taranaki	84.0%	1.2%
2	Wairarapa	82.3%	1.1%
3	Capital and Coast	79.8%	0.6%
<b>4</b>	<b>Nelson Marlborough</b>	<b>79.4%</b>	<b>0.9%</b>
5	Southern (Otago)	79.0%	0.7%
6	Hawke's Bay	78.7%	0.5%
7	Hutt Valley	77.9%	0.9%
8	Bay of Plenty	77.5%	0.1%
9	Lakes	77.3%	0.7%
10	Southern (Southland)	76.8%	1.5%
11	Whanganui	75.6%	1.7%
12	Waikato	75.4%	0.7%
13	South Canterbury	75.2%	0.2%
14	Tairāwhiti	74.9%	1.4%
15	Northland	74.8%	0.6%
16	Mid Central	74.1%	0.2%
17	Auckland	73.7%	1.2%
18	Canterbury	73.4%	-0.2%
19	Waitemata	73.3%	-0.9%
20	West Coast	70.8%	1.6%
21	Counties Manukau	66.5%	-0.8%

On 1 May 2010 Southland and Otago DHBs merged to create Southern DHB.

## 6. NCSP summary monthly coverage to 31 March 2012 – National

Monthly coverage trends for 25-69 year old women screened in the three years to 31 March 2012, as a proportion of the hysterectomy adjusted 2006 Census based female population in New Zealand.



Target: 80% for all population groups by 31 December 2014.