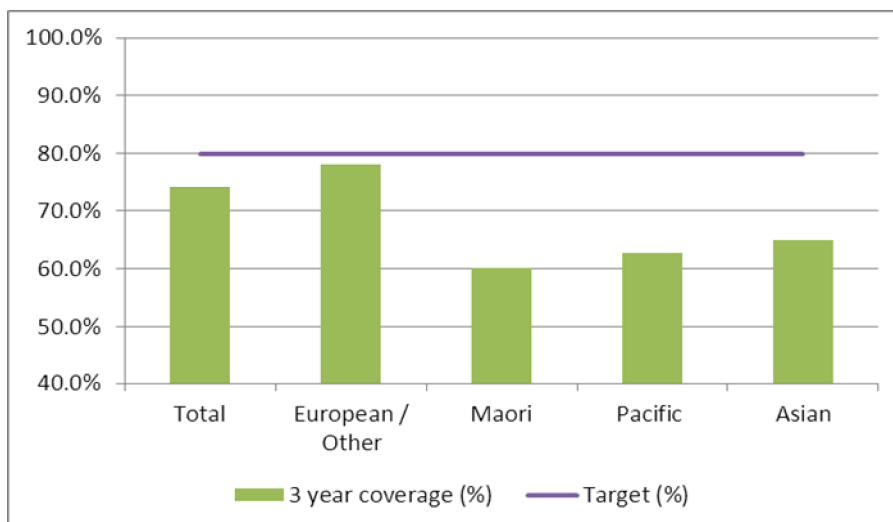


### 1. NCSP coverage – MidCentral DHB Region – 31 March 2012 quarter

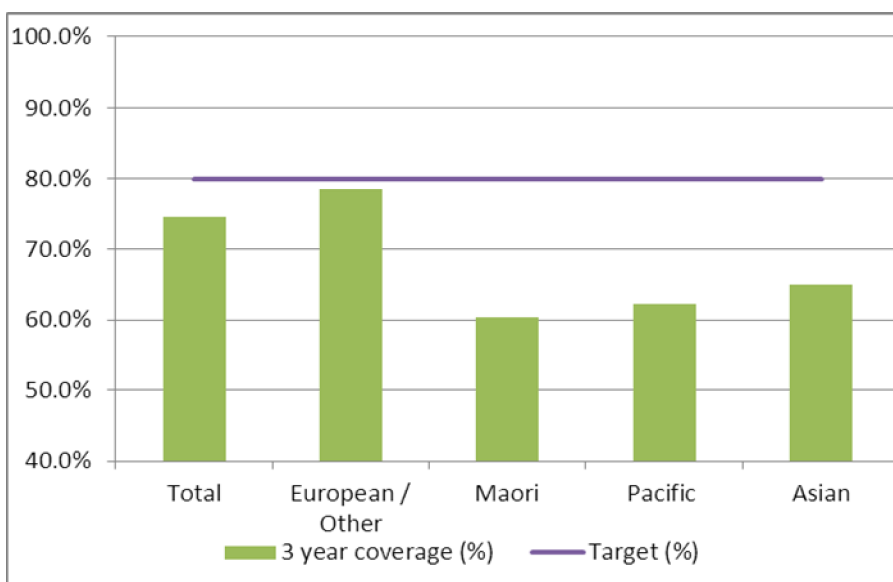
25-69 year old women screened in the three years to 31 March 2012, as a proportion of the hysterectomy adjusted 2006 Census based female population in the MidCentral DHB Region.



|                       | Population | 3 year coverage (n) | 3 year coverage (%) |
|-----------------------|------------|---------------------|---------------------|
| <b>Total</b>          | 41,213     | 30,534              | 74.1%               |
| <b>European/other</b> | 31,171     | 24,354              | 78.1%               |
| <b>Maori</b>          | 6,768      | 4,072               | 60.2%               |
| <b>Pacific</b>        | 883        | 554                 | 62.7%               |
| <b>Asian</b>          | 2,391      | 1,554               | 65.0%               |

### 2. NCSP coverage – MidCentral DHB Region – 31 December 2011 quarter

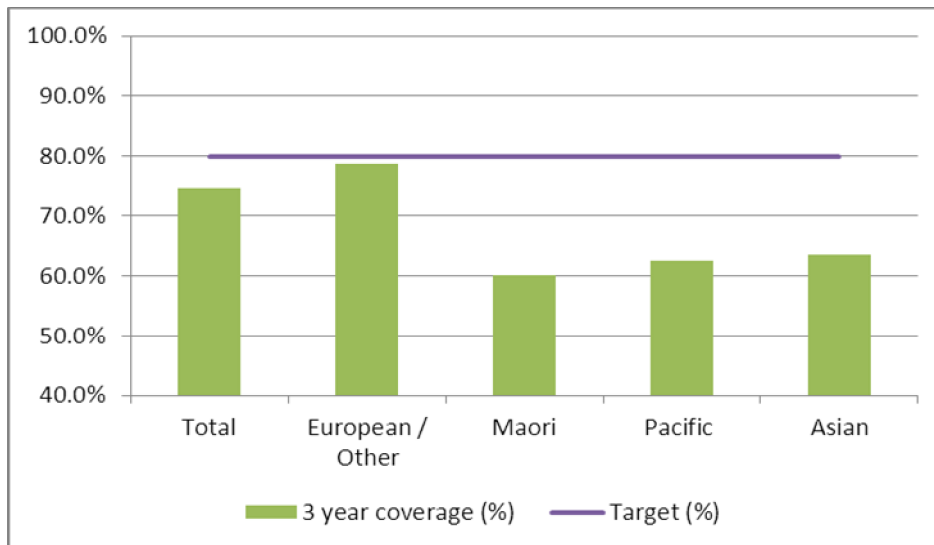
25-69 year old women screened in the three years to 31 December 2011, as a proportion of the hysterectomy adjusted 2006 Census based female population in the MidCentral DHB Region.



|                       | Population | 3 year coverage (n) | 3 year coverage (%) |
|-----------------------|------------|---------------------|---------------------|
| <b>Total</b>          | 41,192     | 30,665              | 74.4%               |
| <b>European/other</b> | 31,209     | 24,511              | 78.5%               |
| <b>Maori</b>          | 6,729      | 4,066               | 60.4%               |
| <b>Pacific</b>        | 877        | 545                 | 62.1%               |
| <b>Asian</b>          | 2,377      | 1,543               | 64.9%               |

### 3. NCSP coverage – MidCentral DHB Region – 30 September 2011 quarter

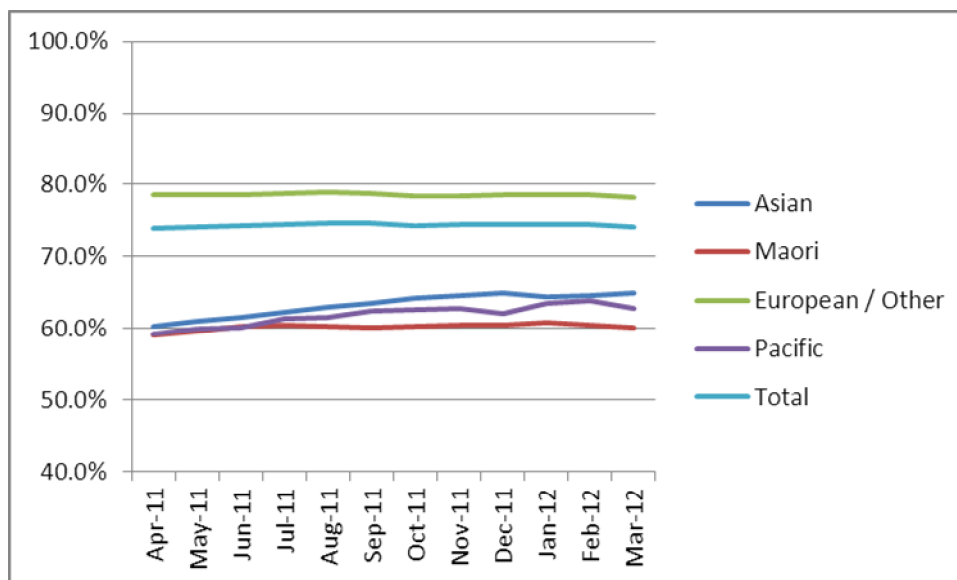
25-69 year old women screened in the three years to 30 September 2011, as a proportion of the hysterectomy adjusted 2006 Census based female population in the MidCentral DHB Region.



|                       | Population | 3 year coverage (n) | 3 year coverage (%) |
|-----------------------|------------|---------------------|---------------------|
| <b>Total</b>          | 41,172     | 30,687              | 74.5%               |
| <b>European/other</b> | 31,247     | 24,616              | 78.8%               |
| <b>Maori</b>          | 6,689      | 4,023               | 60.1%               |
| <b>Pacific</b>        | 873        | 545                 | 62.4%               |
| <b>Asian</b>          | 2,363      | 1,503               | 63.6%               |

### 4. NCSP summary monthly coverage to 31 March 2012 – MidCentral DHB

Monthly coverage trends for 25-69 year old women screened in the three years to 31 March 2012, as a proportion of the hysterectomy adjusted 2006 Census based female population in the MidCentral DHB region.



Target: 80% for all population groups by 31 December 2014.

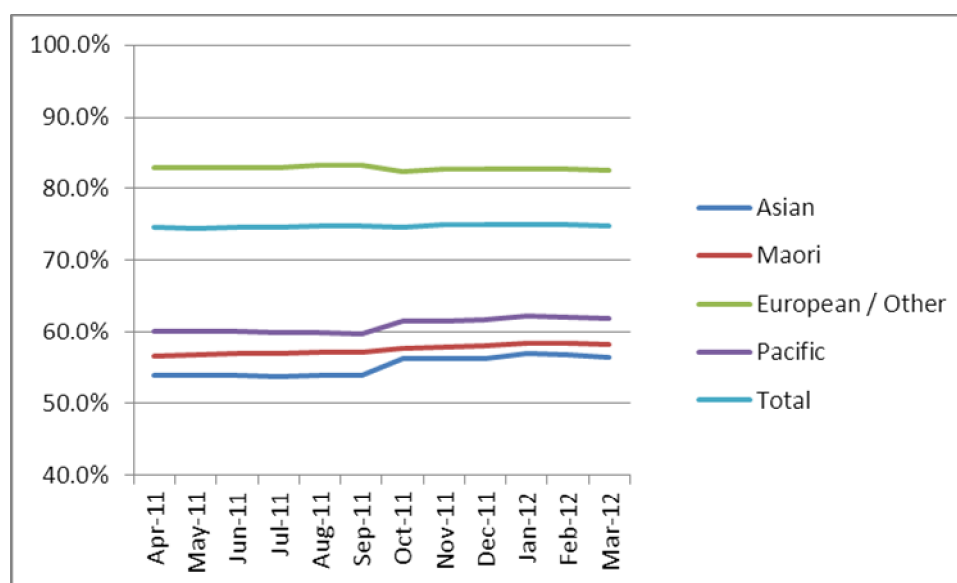
## 5. How was your DHB performing as at 31 March 2012?

| Rank      | DHB                  | March 12 quarter performance (%) | % change from April 2011 |
|-----------|----------------------|----------------------------------|--------------------------|
| 1         | Taranaki             | 84.0%                            | 1.2%                     |
| 2         | Wairarapa            | 82.3%                            | 1.1%                     |
| 3         | Capital and Coast    | 79.8%                            | 0.6%                     |
| 4         | Nelson Marlborough   | 79.4%                            | 0.9%                     |
| 5         | Southern (Otago)     | 79.0%                            | 0.7%                     |
| 6         | Hawke's Bay          | 78.7%                            | 0.5%                     |
| 7         | Hutt Valley          | 77.9%                            | 0.9%                     |
| 8         | Bay of Plenty        | 77.5%                            | 0.1%                     |
| 9         | Lakes                | 77.3%                            | 0.7%                     |
| 10        | Southern (Southland) | 76.8%                            | 1.5%                     |
| 11        | Whanganui            | 75.6%                            | 1.7%                     |
| 12        | Waikato              | 75.4%                            | 0.7%                     |
| 13        | South Canterbury     | 75.2%                            | 0.2%                     |
| 14        | Tairāwhiti           | 74.9%                            | 1.4%                     |
| 15        | Northland            | 74.8%                            | 0.6%                     |
| <b>16</b> | <b>Mid Central</b>   | <b>74.1%</b>                     | <b>0.2%</b>              |
| 17        | Auckland             | 73.7%                            | 1.2%                     |
| 18        | Canterbury           | 73.4%                            | -0.2%                    |
| 19        | Waitemata            | 73.3%                            | -0.9%                    |
| 20        | West Coast           | 70.8%                            | 1.6%                     |
| 21        | Counties Manukau     | 66.5%                            | -0.8%                    |

On 1 May 2010 Southland and Otago DHBs merged to create Southern DHB.

## 6. NCSP summary monthly coverage to 31 March 2012 – National

Monthly coverage trends for 25-69 year old women screened in the three years to 31 March 2012, as a proportion of the hysterectomy adjusted 2006 Census based female population in New Zealand.



Target: 80% for all population groups by 31 December 2014.