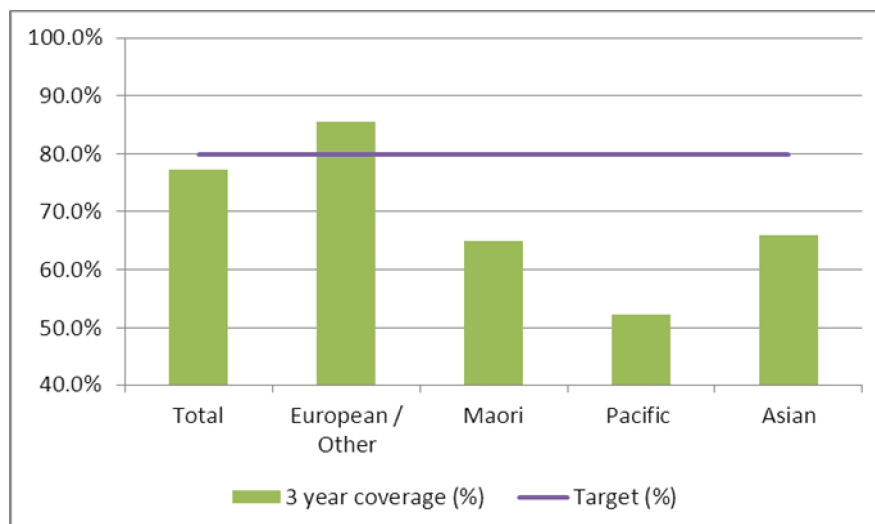


### 1. NCSP coverage – Lakes DHB Region – 31 March 2012 quarter

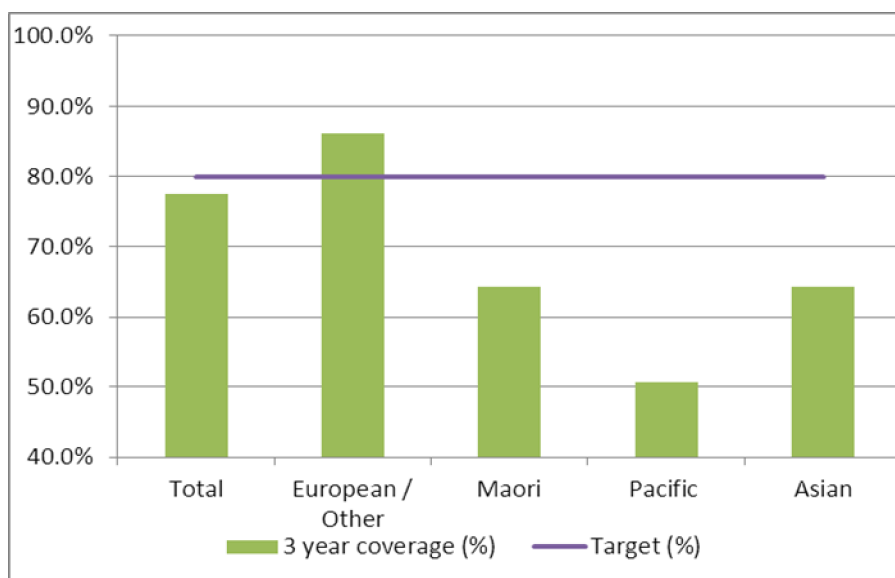
25-69 year old women screened in the three years to 31 March 2012, as a proportion of the hysterectomy adjusted 2006 Census based female population in the Lakes DHB Region.



	Population	3 year coverage (n)	3 year coverage (%)
<b>Total</b>	26,213	20,274	77.3%
<b>European/other</b>	16,159	13,813	85.5%
<b>Maori</b>	8,143	5,284	64.9%
<b>Pacific</b>	606	317	52.3%
<b>Asian</b>	1,305	860	65.9%

### 2. NCSP coverage – Lakes DHB Region – 31 December 2011 quarter

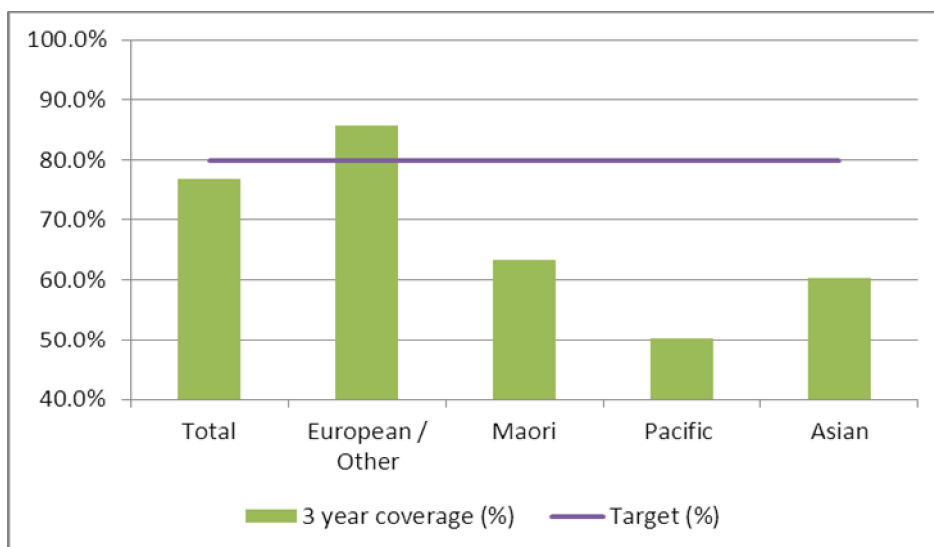
25-69 year old women screened in the three years to 31 December 2011, as a proportion of the hysterectomy adjusted 2006 Census based female population in the Lakes DHB Region.



	Population	3 year coverage (n)	3 year coverage (%)
<b>Total</b>	26,203	20,286	77.4%
<b>European/other</b>	16,176	13,926	86.1%
<b>Maori</b>	8,120	5,218	64.3%
<b>Pacific</b>	605	306	50.6%
<b>Asian</b>	1,302	836	64.2%

### 3. NCSP coverage – Lakes DHB Region – 30 September 2011 quarter

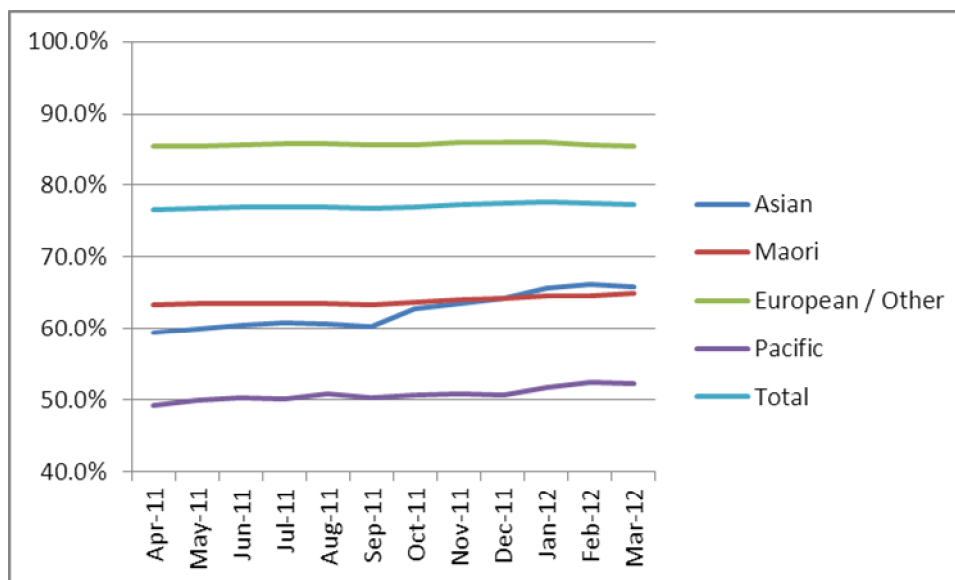
25-69 year old women screened in the three years to 30 September 2011, as a proportion of the hysterectomy adjusted 2006 Census based female population in the Lakes DHB Region.



	Population	3 year coverage (n)	3 year coverage (%)
<b>Total</b>	26,199	20,114	76.8%
<b>European/other</b>	16,195	13,889	85.8%
<b>Maori</b>	8,098	5,135	63.4%
<b>Pacific</b>	606	305	50.3%
<b>Asian</b>	1,300	785	60.4%

### 4. NCSP summary monthly coverage to 31 March 2012 – Lakes DHB

Monthly coverage trends for 25-69 year old women screened in the three years to 31 March 2012, as a proportion of the hysterectomy adjusted 2006 Census based female population in the Lakes DHB region.



Target: 80% for all population groups by 31 December 2014.

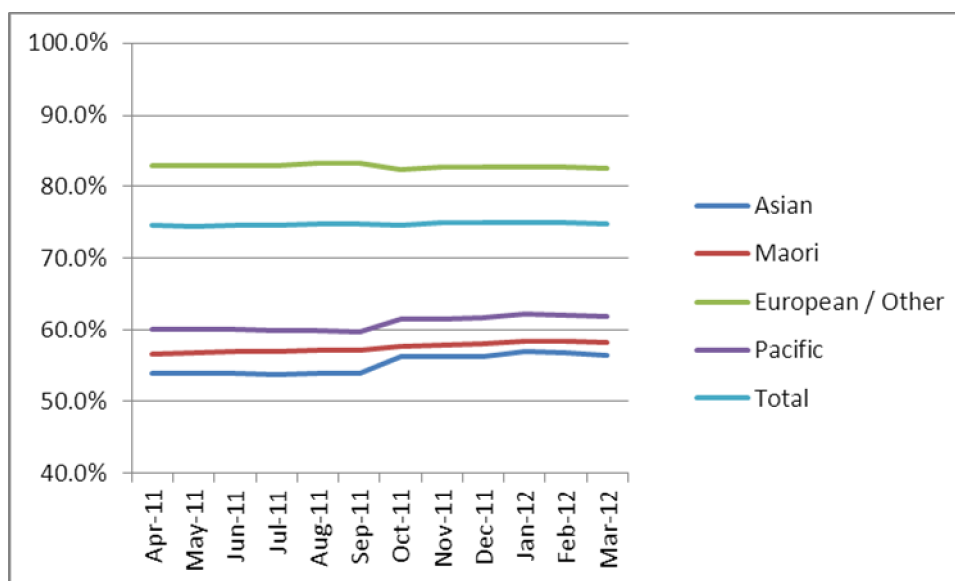
## 5. How was your DHB performing as at 31 March 2012?

Rank	DHB	March 12 quarter performance (%)	% change from April 2011
1	Taranaki	84.0%	1.2%
2	Wairarapa	82.3%	1.1%
3	Capital and Coast	79.8%	0.6%
4	Nelson Marlborough	79.4%	0.9%
5	Southern (Otago)	79.0%	0.7%
6	Hawke's Bay	78.7%	0.5%
7	Hutt Valley	77.9%	0.9%
8	Bay of Plenty	77.5%	0.1%
<b>9</b>	<b>Lakes</b>	<b>77.3%</b>	<b>0.7%</b>
10	Southern (Southland)	76.8%	1.5%
11	Whanganui	75.6%	1.7%
12	Waikato	75.4%	0.7%
13	South Canterbury	75.2%	0.2%
14	Tairāwhiti	74.9%	1.4%
15	Northland	74.8%	0.6%
16	Mid Central	74.1%	0.2%
17	Auckland	73.7%	1.2%
18	Canterbury	73.4%	-0.2%
19	Waitemata	73.3%	-0.9%
20	West Coast	70.8%	1.6%
21	Counties Manukau	66.5%	-0.8%

On 1 May 2010 Southland and Otago DHBs merged to create Southern DHB.

## 6. NCSP summary monthly coverage to 31 March 2012 – National

Monthly coverage trends for 25-69 year old women screened in the three years to 31 March 2012, as a proportion of the hysterectomy adjusted 2006 Census based female population in New Zealand.



Target: 80% for all population groups by 31 December 2014.