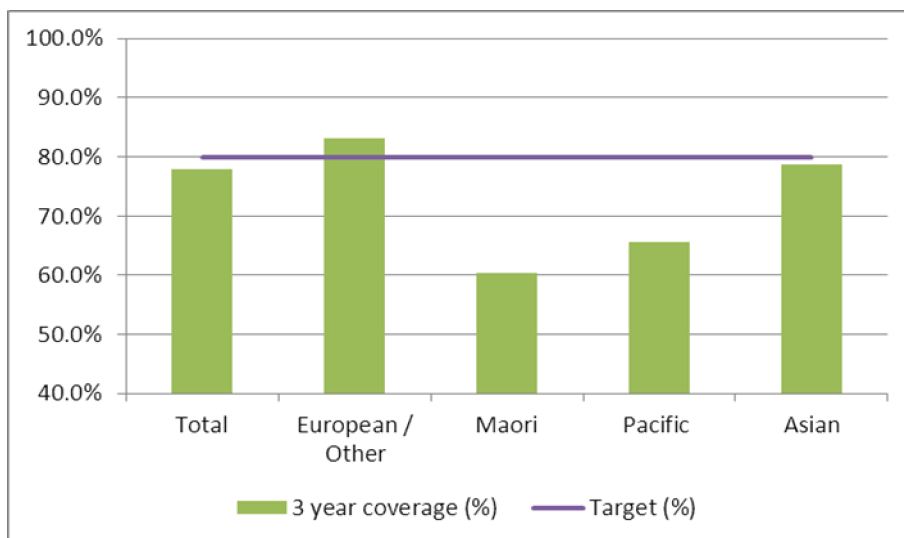


1. NCSP coverage – Hutt Valley DHB Region – 31 March 2012 quarter

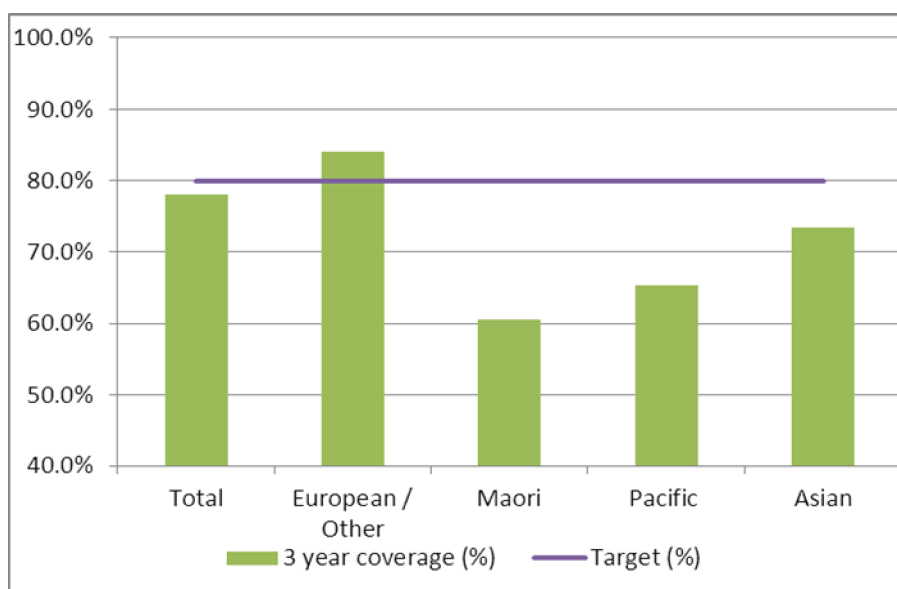
25-69 year old women screened in the three years to 31 March 2012, as a proportion of the hysterectomy adjusted 2006 Census based female population in the Hutt Valley DHB Region.



	Population	3 year coverage (n)	3 year coverage (%)
Total	37,090	28,909	77.9%
European/other	25,096	20,884	83.2%
Maori	5,654	3,406	60.2%
Pacific	2,850	1,869	65.6%
Asian	3,490	2,750	78.8%

2. NCSP coverage – Hutt Valley DHB Region – 31 December 2011 quarter

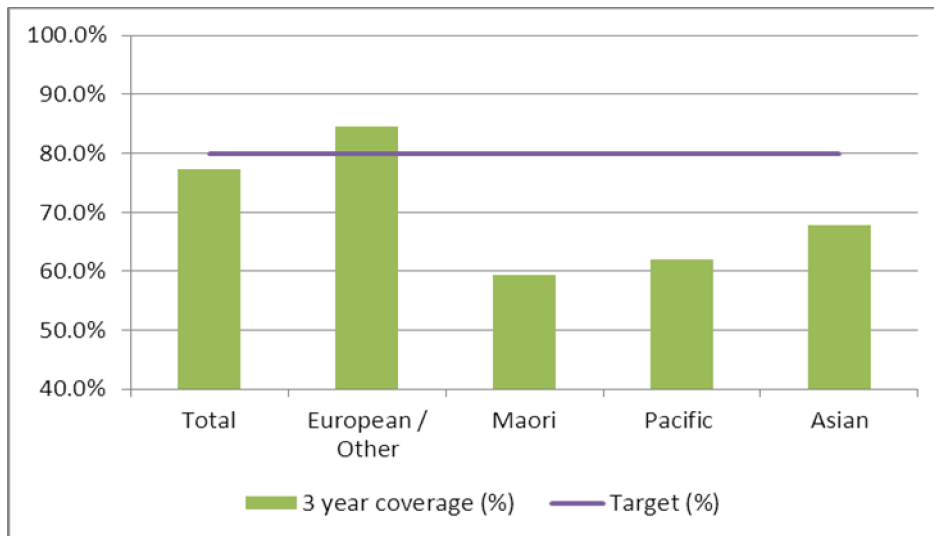
25-69 year old women screened in the three years to 31 December 2011, as a proportion of the hysterectomy adjusted 2006 Census based female population in the Hutt Valley DHB Region.



	Population	3 year coverage (n)	3 year coverage (%)
Total	37,093	28,974	78.1%
European/other	25,146	21,157	84.1%
Maori	5,637	3,412	60.5%
Pacific	2,834	1,849	65.2%
Asian	3,476	2,556	73.5%

3. NCSP coverage – Hutt Valley DHB Region – 30 September 2011 quarter

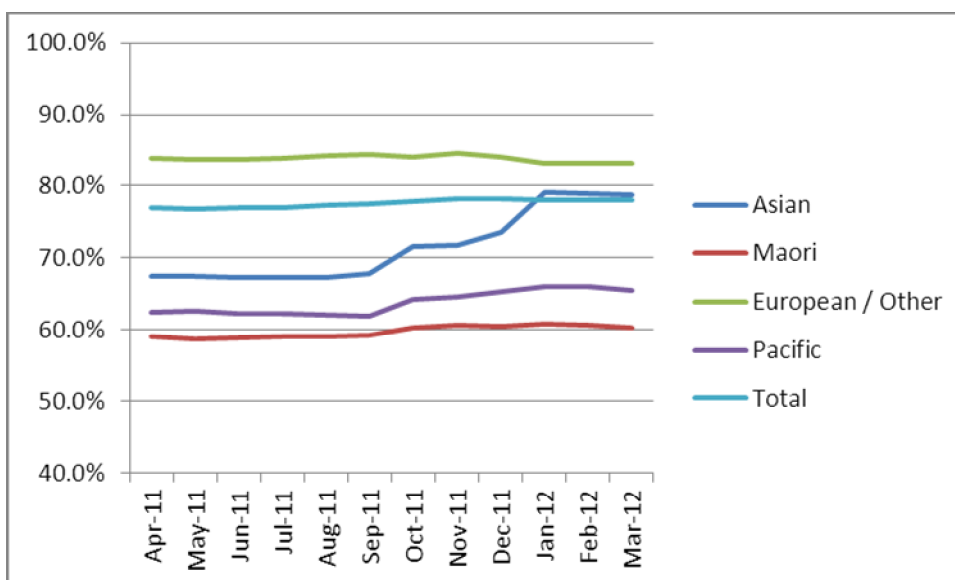
25-69 year old women screened in the three years to 30 September 2011, as a proportion of the hysterectomy adjusted 2006 Census based female population in the Hutt Valley DHB Region.



	Population	3 year coverage (n)	3 year coverage (%)
Total	37,094	28,724	77.4%
European/other	25,194	21,301	84.5%
Maori	5,623	3,334	59.3%
Pacific	2,816	1,743	61.9%
Asian	3,461	2,346	67.8%

4. NCSP summary monthly coverage to 31 March 2012 – Hutt Valley DHB

Monthly coverage trends for 25-69 year old women screened in the three years to 31 March 2012, as a proportion of the hysterectomy adjusted 2006 Census based female population in the Hutt Valley DHB region.



Target: 80% for all population groups by 31 December 2014.

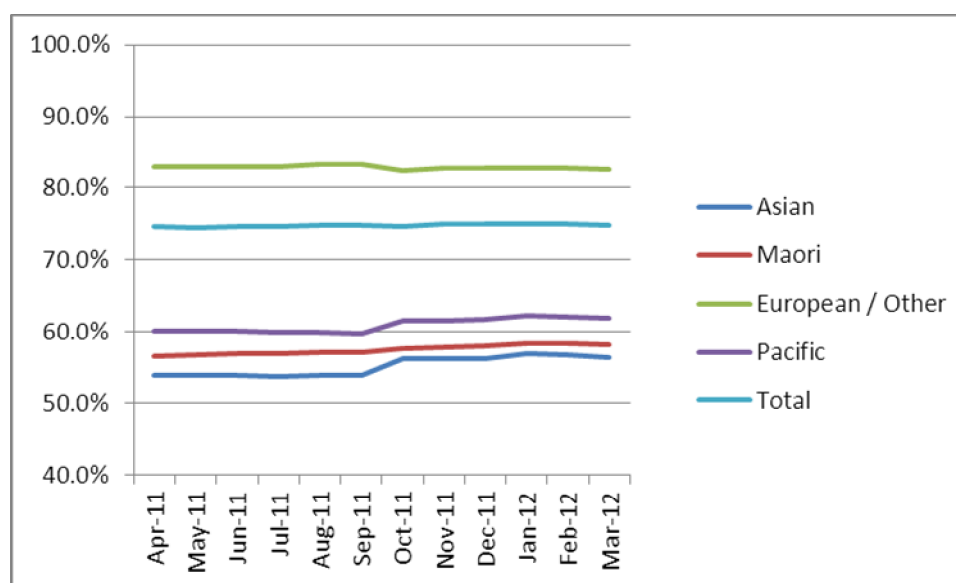
5. How was your DHB performing as at 31 March 2012?

Rank	DHB	March 12 quarter performance (%)	% change from April 2011
1	Taranaki	84.0%	1.2%
2	Wairarapa	82.3%	1.1%
3	Capital and Coast	79.8%	0.6%
4	Nelson Marlborough	79.4%	0.9%
5	Southern (Otago)	79.0%	0.7%
6	Hawke's Bay	78.7%	0.5%
7	Hutt Valley	77.9%	0.9%
8	Bay of Plenty	77.5%	0.1%
9	Lakes	77.3%	0.7%
10	Southern (Southland)	76.8%	1.5%
11	Whanganui	75.6%	1.7%
12	Waikato	75.4%	0.7%
13	South Canterbury	75.2%	0.2%
14	Tairāwhiti	74.9%	1.4%
15	Northland	74.8%	0.6%
16	Mid Central	74.1%	0.2%
17	Auckland	73.7%	1.2%
18	Canterbury	73.4%	-0.2%
19	Waitemata	73.3%	-0.9%
20	West Coast	70.8%	1.6%
21	Counties Manukau	66.5%	-0.8%

On 1 May 2010 Southland and Otago DHBs merged to create Southern DHB.

6. NCSP summary monthly coverage to 31 March 2012 – National

Monthly coverage trends for 25-69 year old women screened in the three years to 31 March 2012, as a proportion of the hysterectomy adjusted 2006 Census based female population in New Zealand.



Target: 80% for all population groups by 31 December 2014.