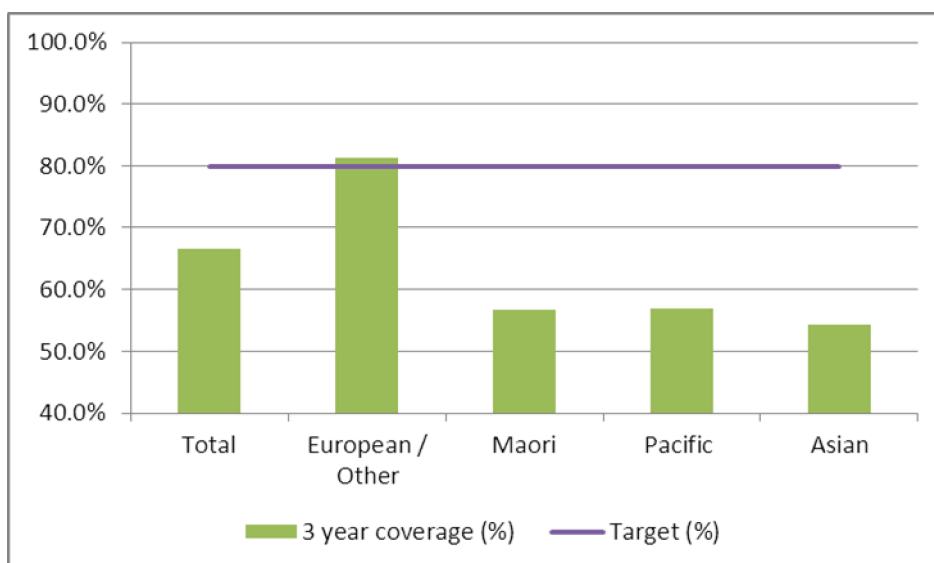


### 1. NCSP coverage – Counties Manakau DHB Region – 31 March 2012 quarter

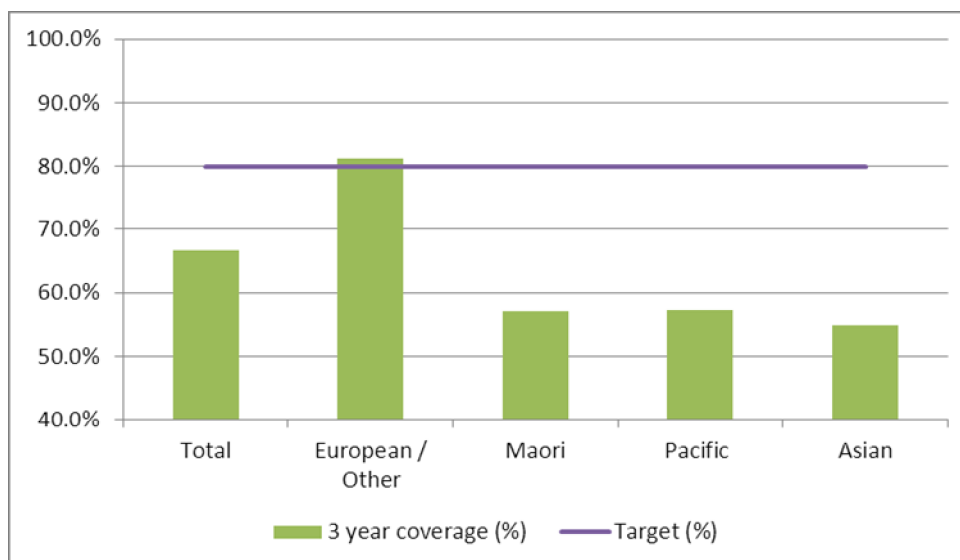
25-69 year old women screened in the three years to 31 March 2012, as a proportion of the hysterectomy adjusted 2006 Census based female population in the Counties Mankau DHB Region.



	Population	3 year coverage (n)	3 year coverage (%)
<b>Total</b>	129,473	86,053	66.5%
<b>European/other</b>	54,006	43,948	81.4%
<b>Maori</b>	18,414	10,430	56.6%
<b>Pacific</b>	26,611	15,157	57.0%
<b>Asian</b>	30,442	16,518	54.3%

### 2. NCSP coverage – Counties Manakau DHB Region – 31 December 2011 quarter

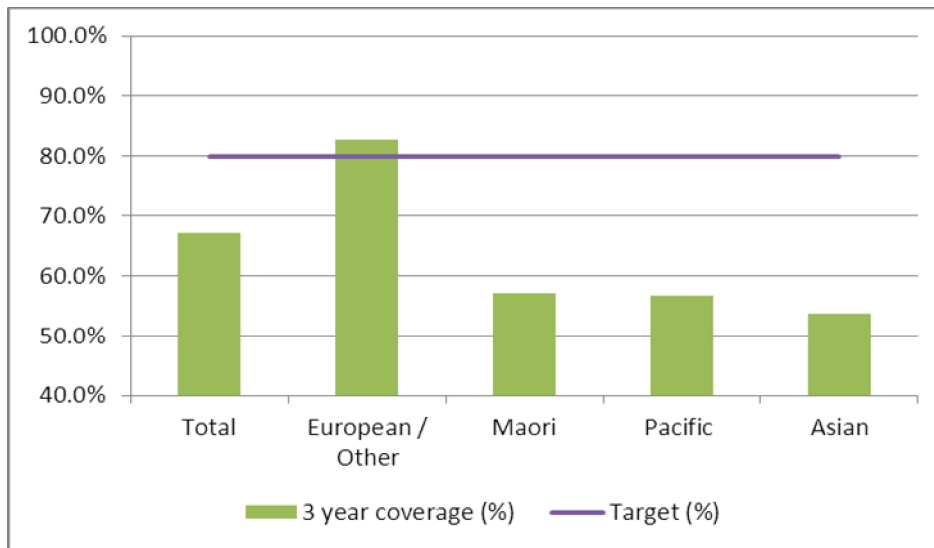
25-69 year old women screened in the three years to 31 December 2011, as a proportion of the hysterectomy adjusted 2006 Census based female population in the Counties Manakau DHB Region.



	Population	3 year coverage (n)	3 year coverage (%)
<b>Total</b>	128,838	85,977	66.7%
<b>European/other</b>	53,941	43,847	81.3%
<b>Maori</b>	18,342	10,462	57.0%
<b>Pacific</b>	26,413	15,148	57.4%
<b>Asian</b>	30,142	16,520	54.8%

### 3. NCSP coverage – Counties Manakau DHB Region – 30 September 2011 quarter

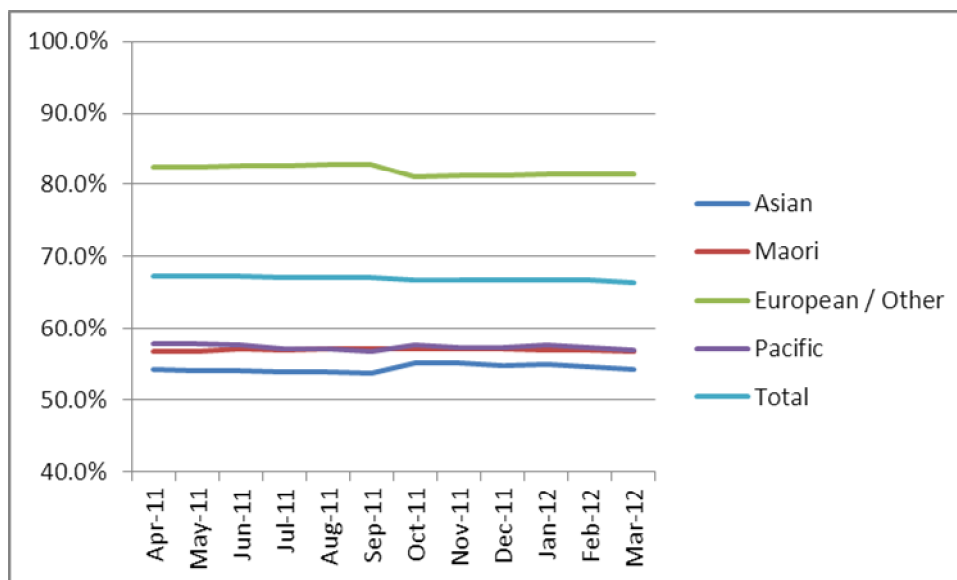
25-69 year old women screened in the three years to 30 September 2011, as a proportion of the hysterectomy adjusted 2006 Census based female population in the Counties Manakau DHB Region.



	Population	3 year coverage (n)	3 year coverage (%)
<b>Total</b>	128,192	85,966	67.1%
<b>European/other</b>	53,872	44,621	82.8%
<b>Maori</b>	18,268	10,426	57.1%
<b>Pacific</b>	26,215	14,882	56.8%
<b>Asian</b>	29,837	16,037	53.7%

### 4. NCSP summary monthly coverage to 31 March 2012 – Counties Manakau DHB

Monthly coverage trends for 25-69 year old women screened in the three years to 31 March 2012, as a proportion of the hysterectomy adjusted 2006 Census based female population in the Counties Manakau DHB region.



Target: 80% for all population groups by 31 December 2014.

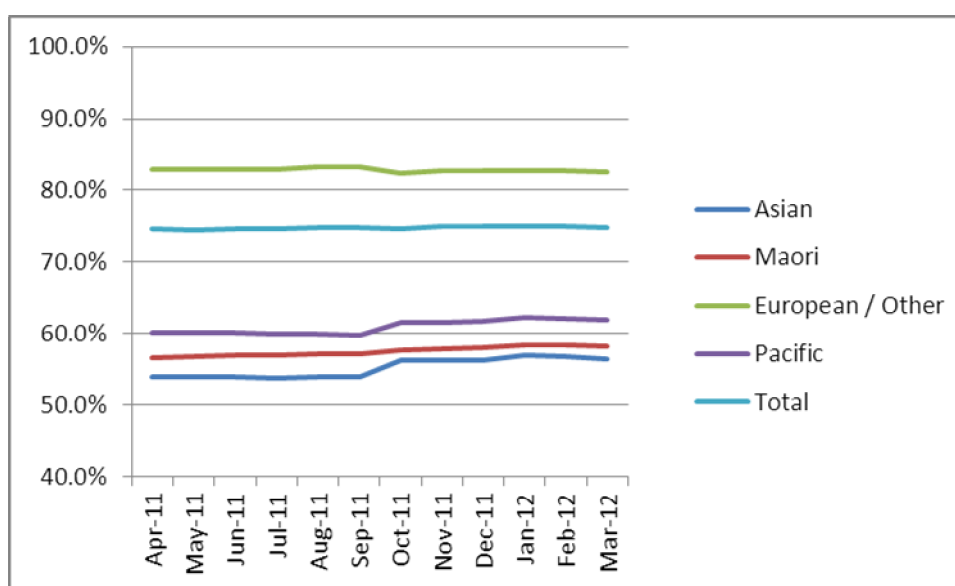
## 5. How was your DHB performing as at 31 March 2012?

Rank	DHB	March 12 quarter performance (%)	% change from April 2011
1	Taranaki	84.0%	1.2%
2	Wairarapa	82.3%	1.1%
3	Capital and Coast	79.8%	0.6%
4	Nelson Marlborough	79.4%	0.9%
5	Southern (Otago)	79.0%	0.7%
6	Hawke's Bay	78.7%	0.5%
7	Hutt Valley	77.9%	0.9%
8	Bay of Plenty	77.5%	0.1%
9	Lakes	77.3%	0.7%
10	Southern (Southland)	76.8%	1.5%
11	Whanganui	75.6%	1.7%
12	Waikato	75.4%	0.7%
13	South Canterbury	75.2%	0.2%
14	Tairāwhiti	74.9%	1.4%
15	Northland	74.8%	0.6%
16	Mid Central	74.1%	0.2%
17	Auckland	73.7%	1.2%
18	Canterbury	73.4%	-0.2%
19	Waitemata	73.3%	-0.9%
20	West Coast	70.8%	1.6%
<b>21</b>	<b>Counties Manukau</b>	<b>66.5%</b>	<b>-0.8%</b>

On 1 May 2010 Southland and Otago DHBs merged to create Southern DHB.

## 6. NCSP summary monthly coverage to 31 March 2012 – National

Monthly coverage trends for 25-69 year old women screened in the three years to 31 March 2012, as a proportion of the hysterectomy adjusted 2006 Census based female population in New Zealand.



Target: 80% for all population groups by 31 December 2014.