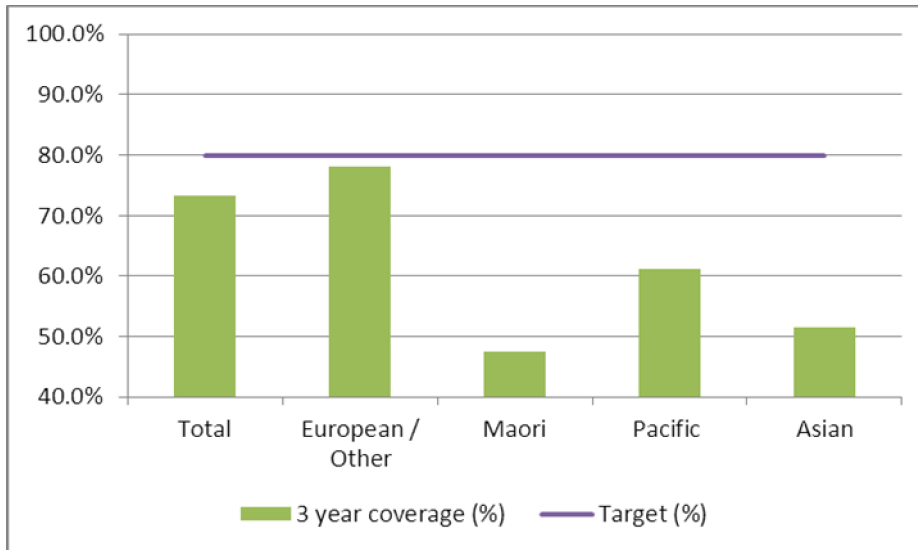


1. NCSP coverage – Canterbury DHB Region – 31 March 2012 quarter

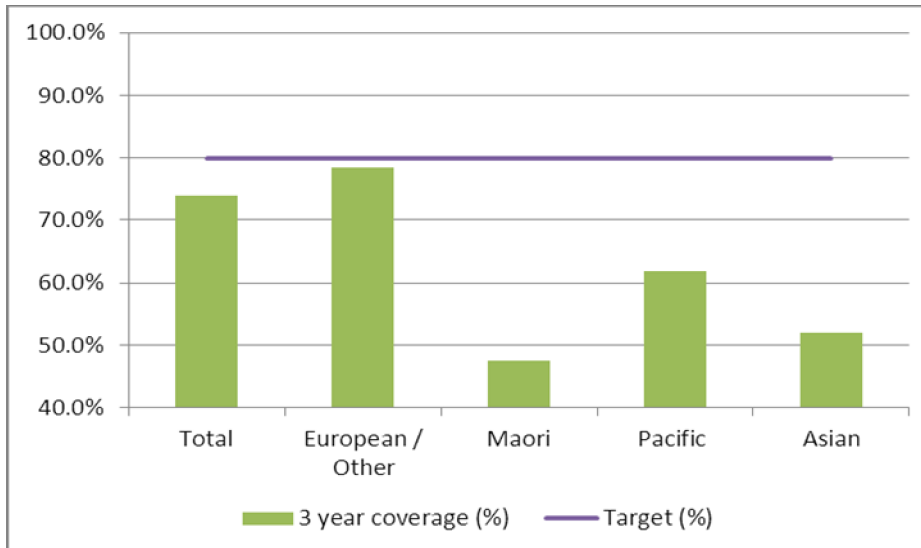
25-69 year old women screened in the three years to 31 March 2012, as a proportion of the hysterectomy adjusted 2006 Census based female population in the Canterbury DHB Region.



	Population	3 year coverage (n)	3 year coverage (%)
Total	131,850	96,799	73.4%
European/other	108,572	84,929	78.2%
Maori	8,654	4,104	47.4%
Pacific	2,565	1,565	61.0%
Asian	12,059	6,201	51.4%

2. NCSP coverage – Canterbury DHB Region – 31 December 2011 quarter

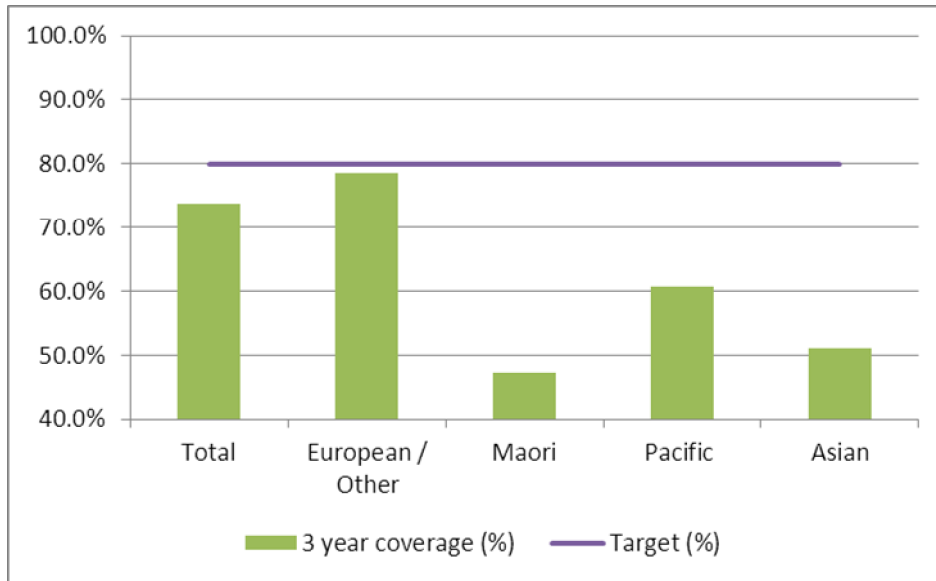
25-69 year old women screened in the three years to 31 December 2011, as a proportion of the hysterectomy adjusted 2006 Census based female population in the Canterbury DHB Region.



	Population	3 year coverage (n)	3 year coverage (%)
Total	131,636	97,123	73.8%
European/other	108,545	85,240	78.5%
Maori	8,596	4,091	47.6%
Pacific	2,538	1,569	61.8%
Asian	11,957	6,223	52.0%

3. NCSP coverage – Canterbury DHB Region – 30 September 2011 quarter

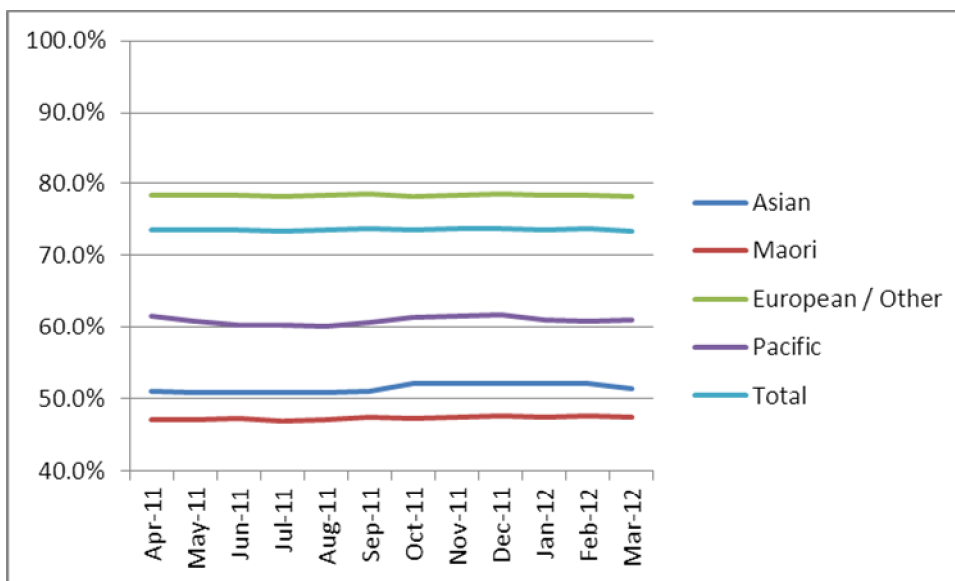
25-69 year old women screened in the three years to 30 September 2011, as a proportion of the hysterectomy adjusted 2006 Census based female population in the Canterbury DHB Region.



	Population	3 year coverage (n)	3 year coverage (%)
Total	131,426	96,943	73.8%
European/other	108,520	85,326	78.6%
Maori	8,539	4,044	47.4%
Pacific	2,515	1,527	60.7%
Asian	11,852	6,046	51.0%

4. NCSP summary monthly coverage to 31 March 2012 – Canterbury DHB

Monthly coverage trends for 25-69 year old women screened in the three years to 31 March 2012, as a proportion of the hysterectomy adjusted 2006 Census based female population in the Canterbury DHB region.



Target: 80% for all population groups by 31 December 2014.

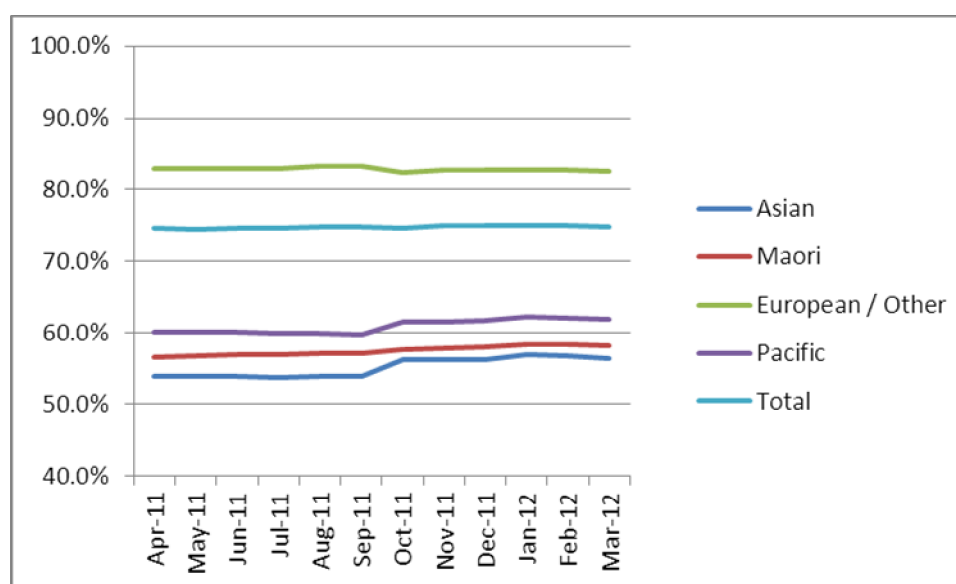
5. How was your DHB performing as at 31 March 2012?

Rank	DHB	March 12 quarter performance (%)	% change from April 2011
1	Taranaki	84.0%	1.2%
2	Wairarapa	82.3%	1.1%
3	Capital and Coast	79.8%	0.6%
4	Nelson Marlborough	79.4%	0.9%
5	Southern (Otago)	79.0%	0.7%
6	Hawke's Bay	78.7%	0.5%
7	Hutt Valley	77.9%	0.9%
8	Bay of Plenty	77.5%	0.1%
9	Lakes	77.3%	0.7%
10	Southern (Southland)	76.8%	1.5%
11	Whanganui	75.6%	1.7%
12	Waikato	75.4%	0.7%
13	South Canterbury	75.2%	0.2%
14	Tairāwhiti	74.9%	1.4%
15	Northland	74.8%	0.6%
16	Mid Central	74.1%	0.2%
17	Auckland	73.7%	1.2%
18	Canterbury	73.4%	-0.2%
19	Waitemata	73.3%	-0.9%
20	West Coast	70.8%	1.6%
21	Counties Manukau	66.5%	-0.8%

On 1 May 2010 Southland and Otago DHBs merged to create Southern DHB.

6. NCSP summary monthly coverage to 31 March 2012 – National

Monthly coverage trends for 25-69 year old women screened in the three years to 31 March 2012, as a proportion of the hysterectomy adjusted 2006 Census based female population in New Zealand.



Target: 80% for all population groups by 31 December 2014.