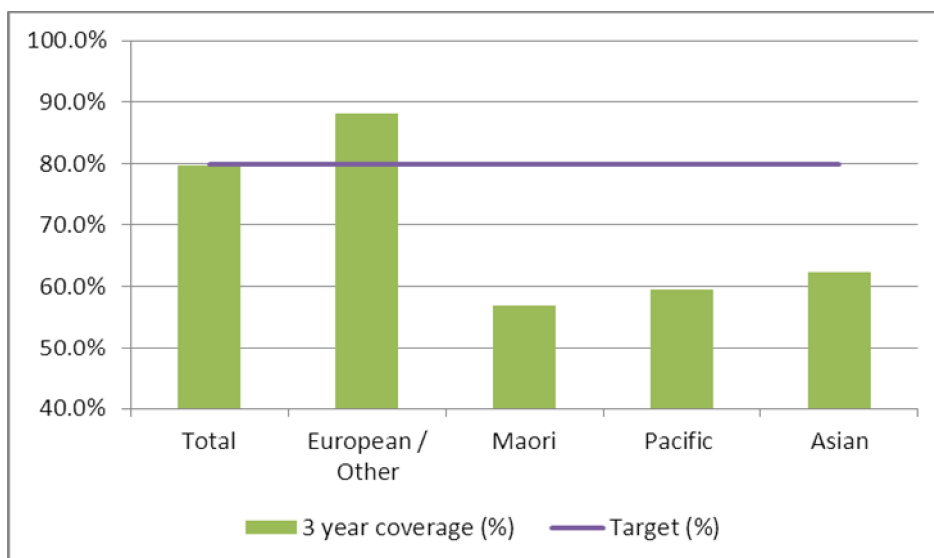


1. NCSP coverage – Capital and Coast DHB Region – 31 March 2012 quarter

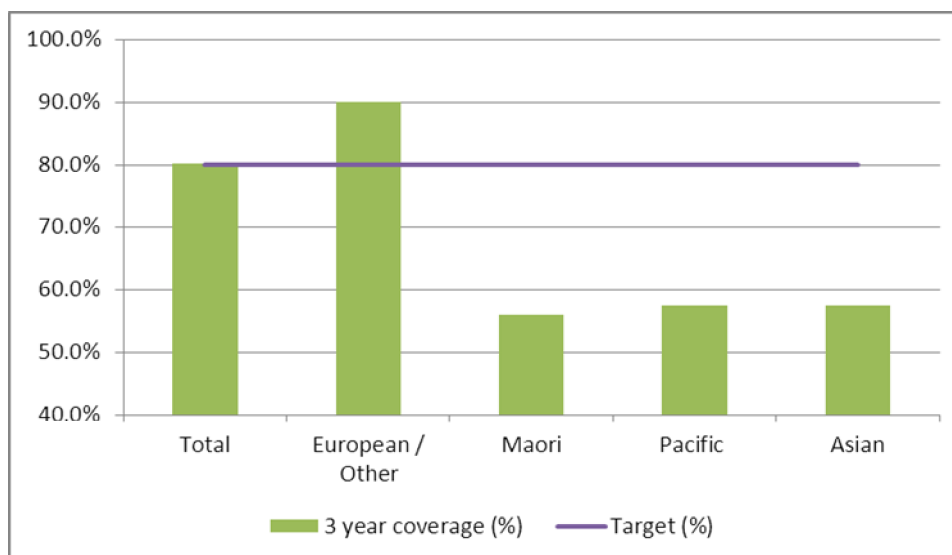
25-69 year old women screened in the three years to 31 March 2012, as a proportion of the hysterectomy adjusted 2006 Census based female population in the Capital and Coast DHB Region.



	Population	3 year coverage (n)	3 year coverage (%)
Total	81,636	65,165	79.8%
European/other	57,496	50,712	88.2%
Maori	7,972	4,534	56.9%
Pacific	5,621	3,342	59.5%
Asian	10,547	6,577	62.4%

2. NCSP coverage – Capital and Coast DHB Region – 31 December 2011 quarter

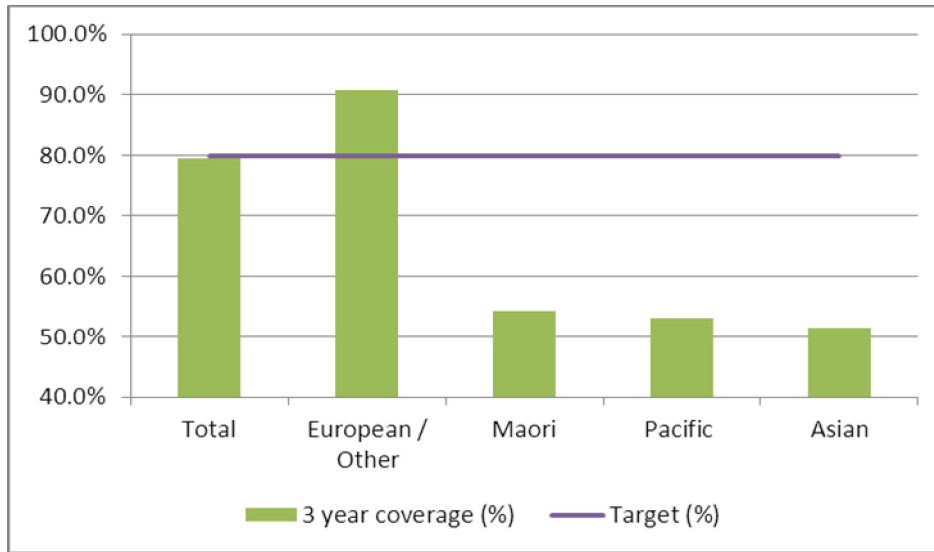
25-69 year old women screened in the three years to 31 December 2011, as a proportion of the hysterectomy adjusted 2006 Census based female population in the Capital and Coast DHB Region.



	Population	3 year coverage (n)	3 year coverage (%)
Total	81,373	65,296	80.2%
European/other	57,382	51,632	90.0%
Maori	7,923	4,433	56.0%
Pacific	5,608	3,222	57.5%
Asian	10,460	6,009	57.4%

3. NCSP coverage – Capital and Coast DHB Region – 30 September 2011 quarter

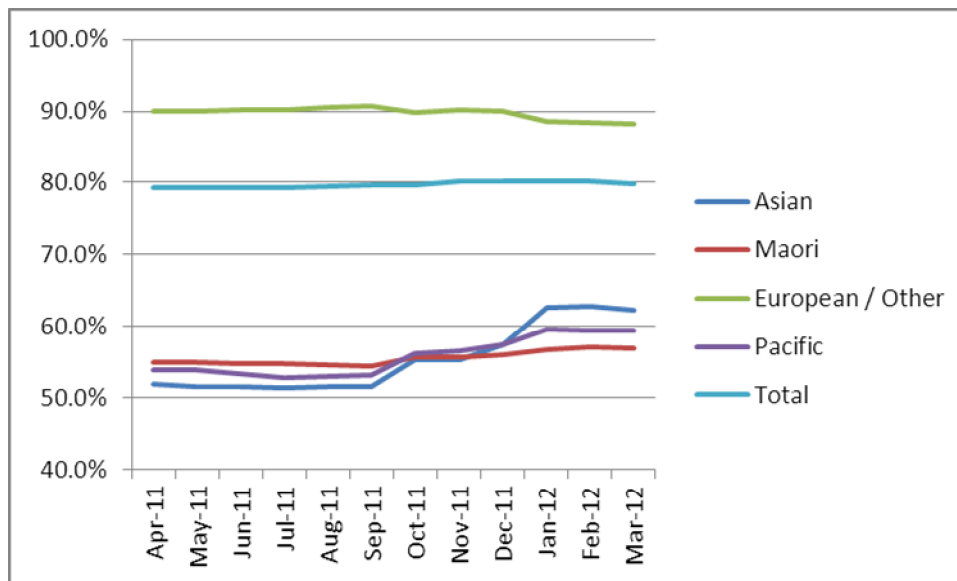
25-69 year old women screened in the three years to 30 September 2011, as a proportion of the hysterectomy adjusted 2006 Census based female population in the Capital and Coast DHB Region.



	Population	3 year coverage (n)	3 year coverage (%)
Total	81,103	64,573	79.6%
European/other	57,266	51,978	90.8%
Maori	7,874	4,281	54.4%
Pacific	5,593	2,970	53.1%
Asian	10,370	5,344	51.5%

4. NCSP summary monthly coverage to 31 March 2012 – Capital and Coast DHB

Monthly coverage trends for 25-69 year old women screened in the three years to 31 March 2012, as a proportion of the hysterectomy adjusted 2006 Census based female population in the Capital and Coast DHB region.



Target: 80% for all population groups by 31 December 2014.

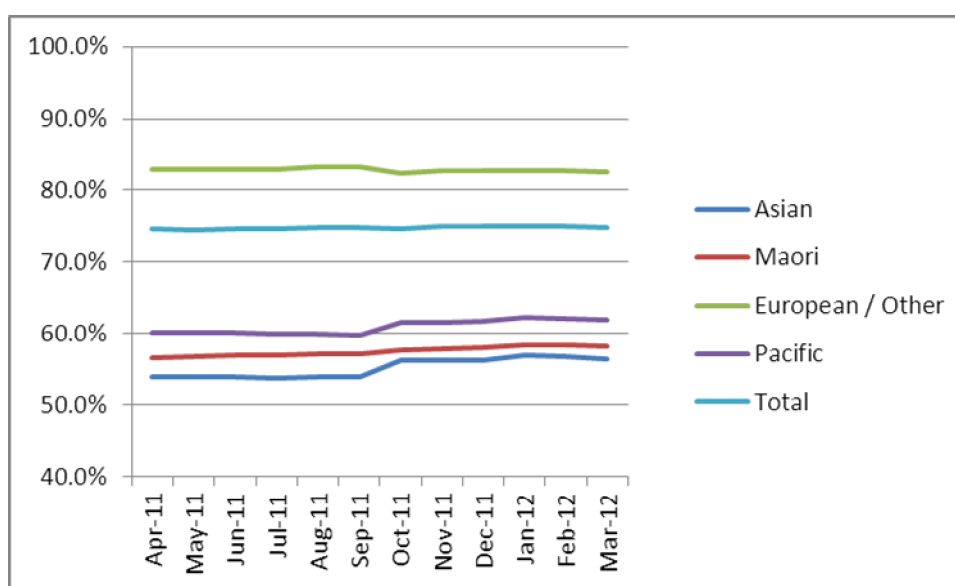
5. How was your DHB performing as at 31 March 2012?

Rank	DHB	March 12 quarter performance (%)	% change from April 2011
1	Taranaki	84.0%	1.2%
2	Wairarapa	82.3%	1.1%
3	Capital and Coast	79.8%	0.6%
4	Nelson Marlborough	79.4%	0.9%
5	Southern (Otago)	79.0%	0.7%
6	Hawke's Bay	78.7%	0.5%
7	Hutt Valley	77.9%	0.9%
8	Bay of Plenty	77.5%	0.1%
9	Lakes	77.3%	0.7%
10	Southern (Southland)	76.8%	1.5%
11	Whanganui	75.6%	1.7%
12	Waikato	75.4%	0.7%
13	South Canterbury	75.2%	0.2%
14	Tairāwhiti	74.9%	1.4%
15	Northland	74.8%	0.6%
16	Mid Central	74.1%	0.2%
17	Auckland	73.7%	1.2%
18	Canterbury	73.4%	-0.2%
19	Waitemata	73.3%	-0.9%
20	West Coast	70.8%	1.6%
21	Counties Manukau	66.5%	-0.8%

On 1 May 2010 Southland and Otago DHBs merged to create Southern DHB.

6. NCSP summary monthly coverage to 31 March 2012 – National

Monthly coverage trends for 25-69 year old women screened in the three years to 31 March 2012, as a proportion of the hysterectomy adjusted 2006 Census based female population in New Zealand.



Target: 80% for all population groups by 31 December 2014.