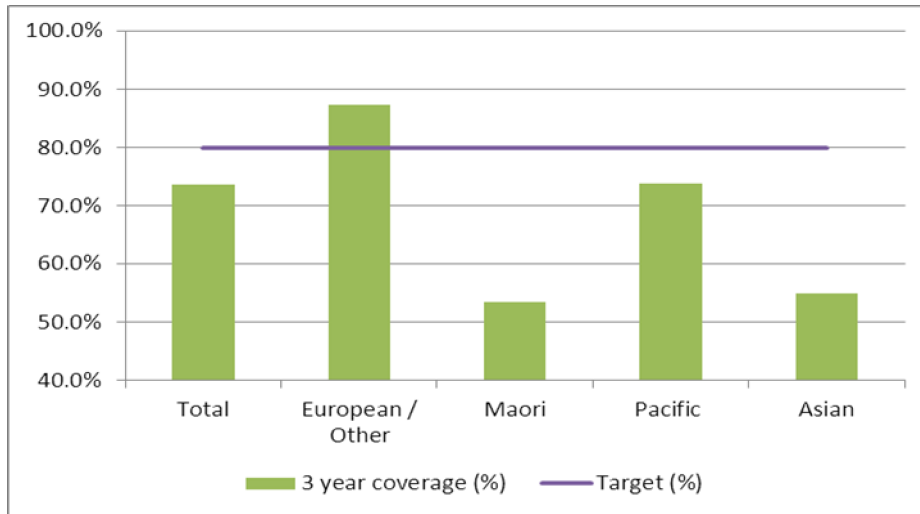


## 1. NCSP coverage – Auckland DHB Region – 31 March 2012 quarter

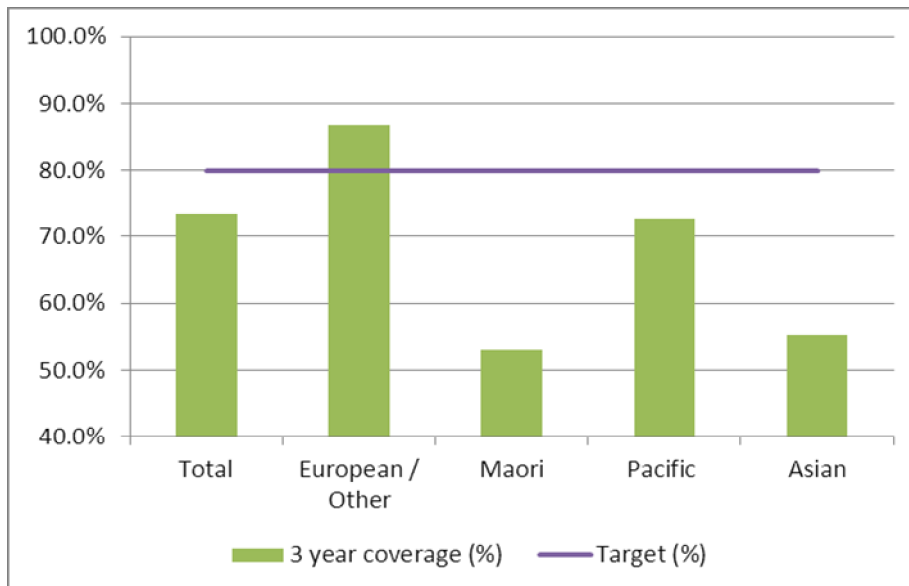
25-69 year old women screened in the three years to 31 March 2012, as a proportion of the hysterectomy adjusted 2006 Census based female population in the Auckland DHB Region.



	Population	3 year coverage (n)	3 year coverage (%)
<b>Total</b>	132,830	97,846	73.7%
<b>European/other</b>	70,159	61,282	87.3%
<b>Maori</b>	9,315	4,968	53.3%
<b>Pacific</b>	12,360	9,127	73.8%
<b>Asian</b>	40,996	22,469	54.8%

## 2. NCSP coverage – Auckland DHB Region – 31 December 2011 quarter

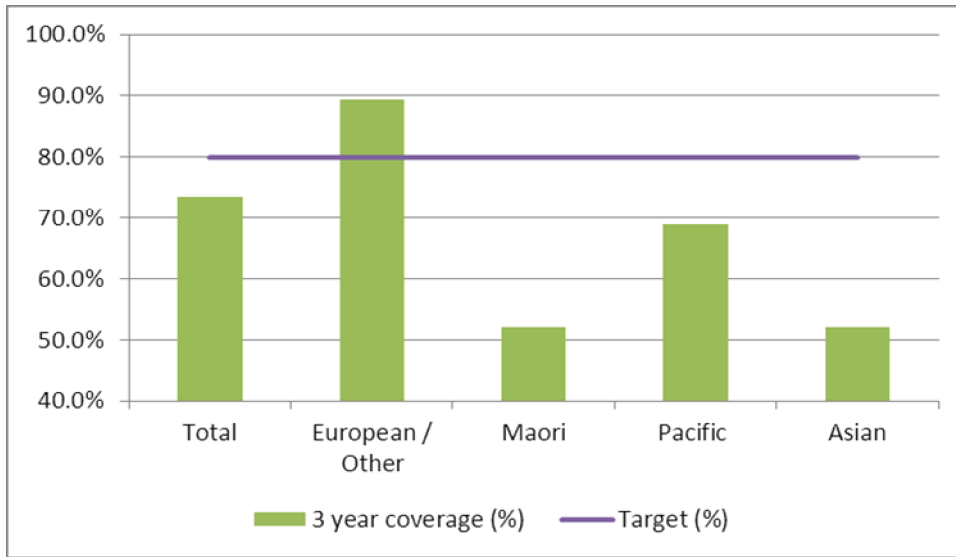
25-69 year old women screened in the three years to 31 December 2011, as a proportion of the hysterectomy adjusted 2006 Census based female population in the Auckland DHB Region.



	Population	3 year coverage (n)	3 year coverage (%)
<b>Total</b>	132,267	97,136	73.4%
<b>European/other</b>	70,014	60,782	86.8%
<b>Maori</b>	9,285	4,927	53.1%
<b>Pacific</b>	12,365	9,000	72.8%
<b>Asian</b>	40,603	22,427	55.2%

### 3. NCSP coverage – Auckland DHB Region – 30 September 2011 quarter

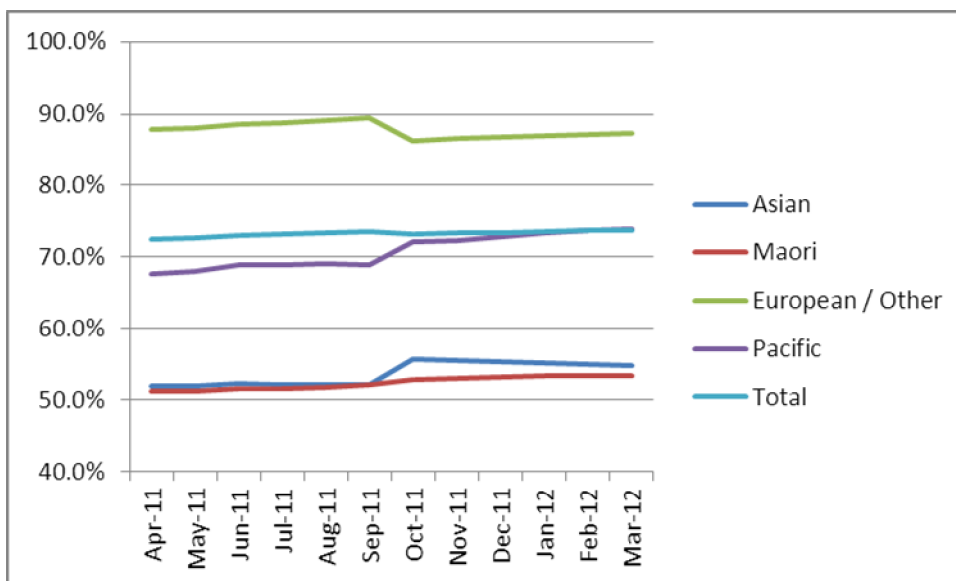
25-69 year old women screened in the three years to 30 September 2011, as a proportion of the hysterectomy adjusted 2006 Census based female population in the Auckland DHB Region.



	Population	3 year coverage (n)	3 year coverage (%)
<b>Total</b>	131,696	96,774	73.5%
<b>European/other</b>	69,872	62,510	89.5%
<b>Maori</b>	9,253	4,812	52.0%
<b>Pacific</b>	12,368	8,522	68.9%
<b>Asian</b>	40,203	20,930	52.1%

### 4. NCSP summary monthly coverage to 31 March 2012 – Auckland DHB

Monthly coverage trends for 25-69 year old women screened in the three years to 31 March 2012, as a proportion of the hysterectomy adjusted 2006 Census based female population in the Auckland DHB region.



Target: 80% for all population groups by 31 December 2014.

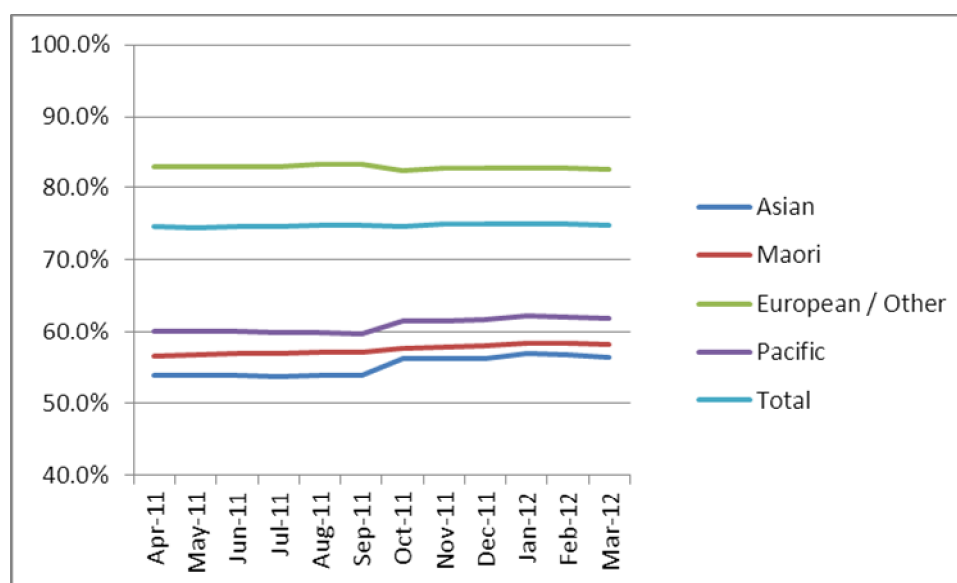
## 5. How was your DHB performing as at 31 March 2012?

Rank	DHB	March 12 quarter performance (%)	% change from April 2011
1	Taranaki	84.0%	1.2%
2	Wairarapa	82.3%	1.1%
3	Capital and Coast	79.8%	0.6%
4	Nelson Marlborough	79.4%	0.9%
5	Southern (Otago)	79.0%	0.7%
6	Hawke's Bay	78.7%	0.5%
7	Hutt Valley	77.9%	0.9%
8	Bay of Plenty	77.5%	0.1%
9	Lakes	77.3%	0.7%
10	Southern (Southland)	76.8%	1.5%
11	Whanganui	75.6%	1.7%
12	Waikato	75.4%	0.7%
13	South Canterbury	75.2%	0.2%
14	Tairāwhiti	74.9%	1.4%
15	Northland	74.8%	0.6%
16	Mid Central	74.1%	0.2%
<b>17</b>	<b>Auckland</b>	<b>73.7%</b>	<b>1.2%</b>
18	Canterbury	73.4%	-0.2%
19	Waitemata	73.3%	-0.9%
20	West Coast	70.8%	1.6%
21	Counties Manukau	66.5%	-0.8%

On 1 May 2010 Southland and Otago DHBs merged to create Southern DHB.

## 6. NCSP summary monthly coverage to 31 March 2012 – National

Monthly coverage trends for 25-69 year old women screened in the three years to 31 March 2012, as a proportion of the hysterectomy adjusted 2006 Census based female population in New Zealand.



Target: 80% for all population groups by 31 December 2014.