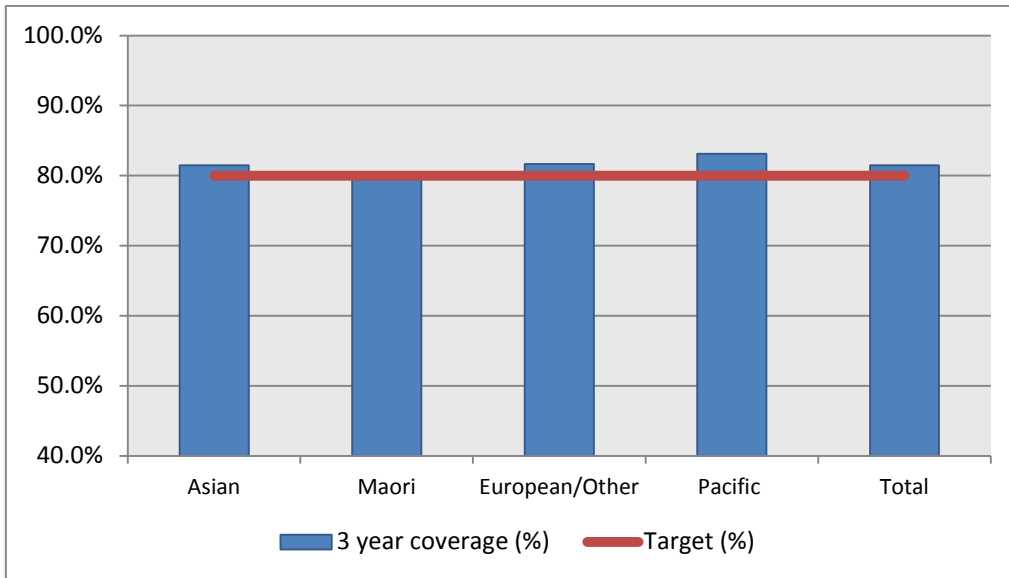


1. NCSP coverage – Wairarapa DHB Region – 30 June 2013 quarter

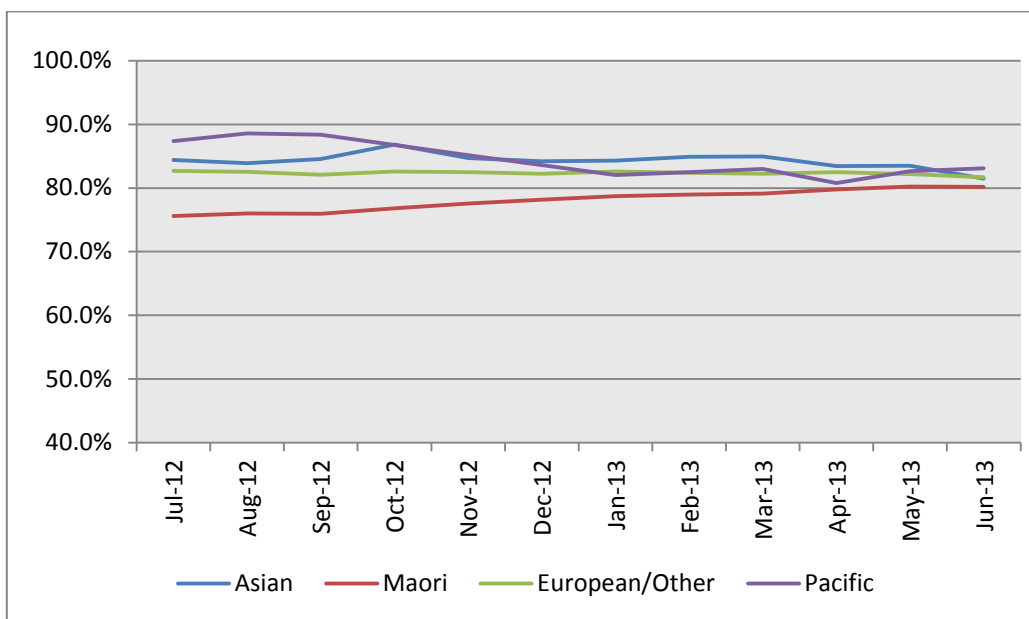
25-69 year old women screened in the three years to 30 June 2013, as a proportion of the hysterectomy adjusted 2006 Census based female population in the Wairarapa DHB Region.



| | Population | 3 year coverage (n) | 3 year coverage (%) |
|----------------|------------|---------------------|---------------------|
| Asian | 189 | 154 | 81.5% |
| Maori | 1,256 | 1,007 | 80.2% |
| European/Other | 8,354 | 6,822 | 81.7% |
| Pacific | 147 | 122 | 83.1% |
| Total | 9,946 | 8,105 | 81.5% |

2. NCSP summary monthly coverage to 30 June 2013 – Wairarapa DHB

Monthly coverage trends for 25-69 year old women screened in the three years to 30 June 2013 by Ethnicity, as a proportion of the hysterectomy adjusted 2006 Census based female population in the Wairarapa DHB region.



Target: 80% for all population groups by 31 December 2014.

3. How was your DHB performing as at 30 June 2013?

| Rank | | Jun-13 | % change from June 2012 | Jun-12 |
|------|--------------------|--------------|-------------------------|--------------|
| 1 | Taranaki | 85.2% | 0.4% | 84.8% |
| 2 | Wairarapa | 81.5% | -0.9% | 82.4% |
| 3 | Hawkes Bay | 81.3% | 0.9% | 80.4% |
| 4 | Nelson Marlborough | 80.8% | -0.2% | 81.0% |
| 5 | Bay of Plenty | 80.2% | 0.3% | 79.9% |
| 6 | Capital&Coast | 80.0% | -1.4% | 81.4% |
| 7 | Lakes | 79.9% | -0.8% | 80.7% |
| 8 | Hutt Valley | 79.5% | -0.5% | 79.9% |
| 9 | Tairāwhiti | 78.9% | -1.0% | 79.8% |
| 10 | Southern | 78.5% | 0.1% | 78.4% |
| 11 | West Coast | 77.9% | 3.4% | 74.5% |
| 12 | Auckland | 77.5% | 0.8% | 76.7% |
| 13 | Waikato | 77.4% | 0.2% | 77.2% |
| 14 | National | 76.8% | -0.1% | 77.0% |
| 15 | Whanganui | 76.4% | -1.1% | 77.5% |
| 16 | South Canterbury | 76.1% | 0.3% | 75.8% |
| 17 | Northland | 75.7% | -0.7% | 76.4% |
| 18 | Waitemata | 75.5% | -0.1% | 75.7% |
| 19 | Mid Central | 75.4% | -0.3% | 75.7% |
| 20 | Canterbury | 74.8% | -0.6% | 75.4% |
| 21 | Counties Manukau | 69.3% | -0.4% | 69.7% |

4. NCSP summary monthly coverage to 30 June 2013 – DHB vs National

Monthly coverage trends for 25-69 year old women screened in the three years to 30 June 2013 as a proportion of the hysterectomy adjusted 2006 Census based female population in New Zealand.

