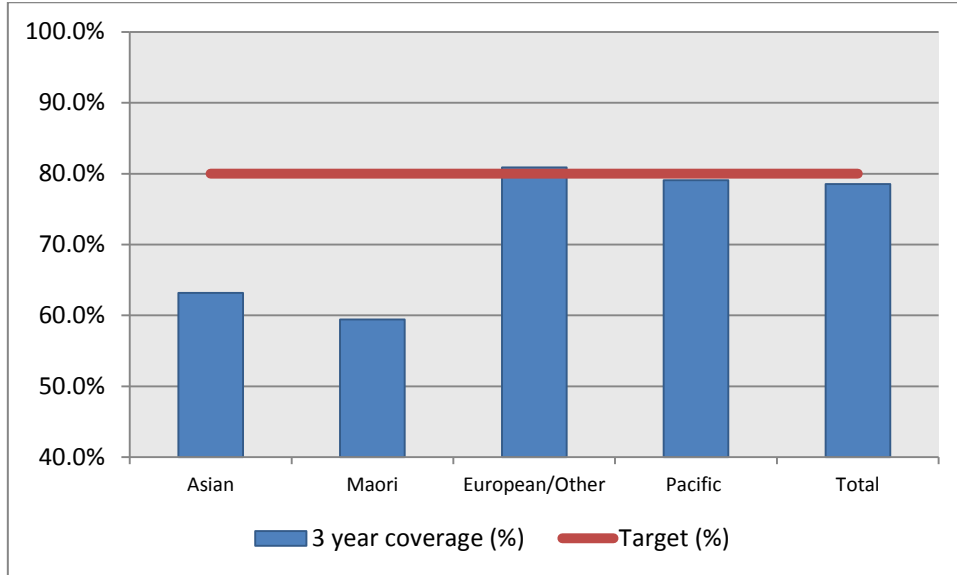


1. NCSP coverage – Southern DHB Region – 30 June 2013 quarter

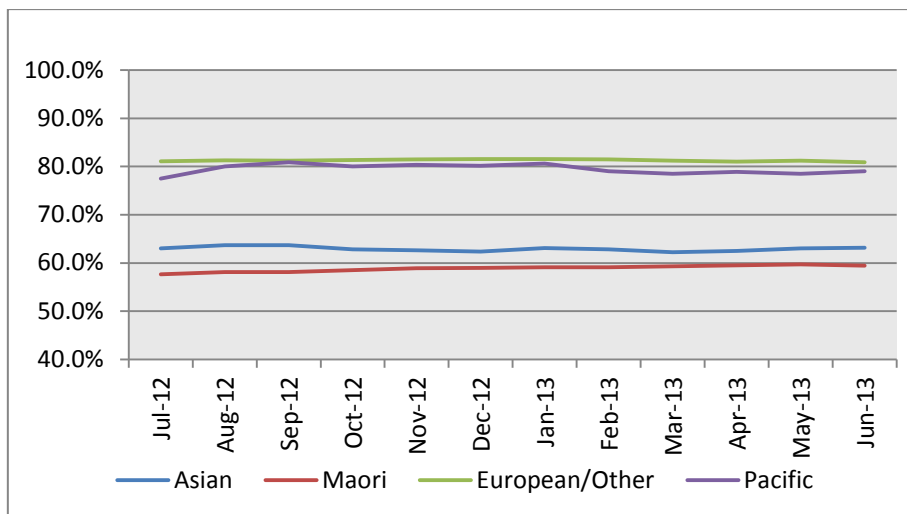
25-69 year old women screened in the three years to 30 June 2013, as a proportion of the hysterectomy adjusted 2006 Census based female population in the Southern DHB Region.



	Population	3 year coverage (n)	3 year coverage (%)
Asian	3,240	2,047	63.2%
Maori	5,581	3,316	59.4%
European/Other	66,871	54,071	80.9%
Pacific	925	731	79.1%
Total	76,616	60,165	78.5%

2. NCSP summary monthly coverage to 30 June 2013 – Southern DHB

Monthly coverage trends for 25-69 year old women screened in the three years to 30 June 2013 by Ethnicity, as a proportion of the hysterectomy adjusted 2006 Census based female population in the Southern DHB region.



Target: 80% for all population groups by 31 December 2014.

3. How was your DHB performing as at 30 June 2013?

Rank		Jun-13	% change from June 2012	Jun-12
1	Taranaki	85.2%	0.4%	84.8%
2	Wairarapa	81.5%	-0.9%	82.4%
3	Hawkes Bay	81.3%	0.9%	80.4%
4	Nelson Marlborough	80.8%	-0.2%	81.0%
5	Bay of Plenty	80.2%	0.3%	79.9%
6	Capital&Coast	80.0%	-1.4%	81.4%
7	Lakes	79.9%	-0.8%	80.7%
8	Hutt Valley	79.5%	-0.5%	79.9%
9	Tairāwhiti	78.9%	-1.0%	79.8%
10	Southern	78.5%	0.1%	78.4%
11	West Coast	77.9%	3.4%	74.5%
12	Auckland	77.5%	0.8%	76.7%
13	Waikato	77.4%	0.2%	77.2%
14	National	76.8%	-0.1%	77.0%
15	Whanganui	76.4%	-1.1%	77.5%
16	South Canterbury	76.1%	0.3%	75.8%
17	Northland	75.7%	-0.7%	76.4%
18	Waitemata	75.5%	-0.1%	75.7%
19	MidCentral	75.4%	-0.3%	75.7%
20	Canterbury	74.8%	-0.6%	75.4%
21	Counties Manukau	69.3%	-0.4%	69.7%

4. NCSP summary monthly coverage to 30 June 2013 – DHB vs National

Monthly coverage trends for 25-69 year old women screened in the three years to 30 June 2013, as a proportion of the hysterectomy adjusted 2006 Census based female population in New Zealand.

