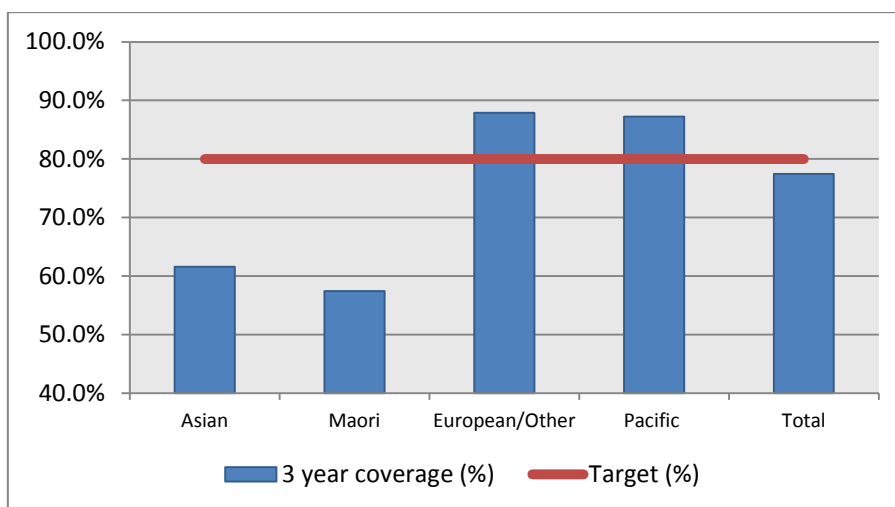


## 1. NCSP coverage – Auckland DHB Region – 30 June 2013 quarter

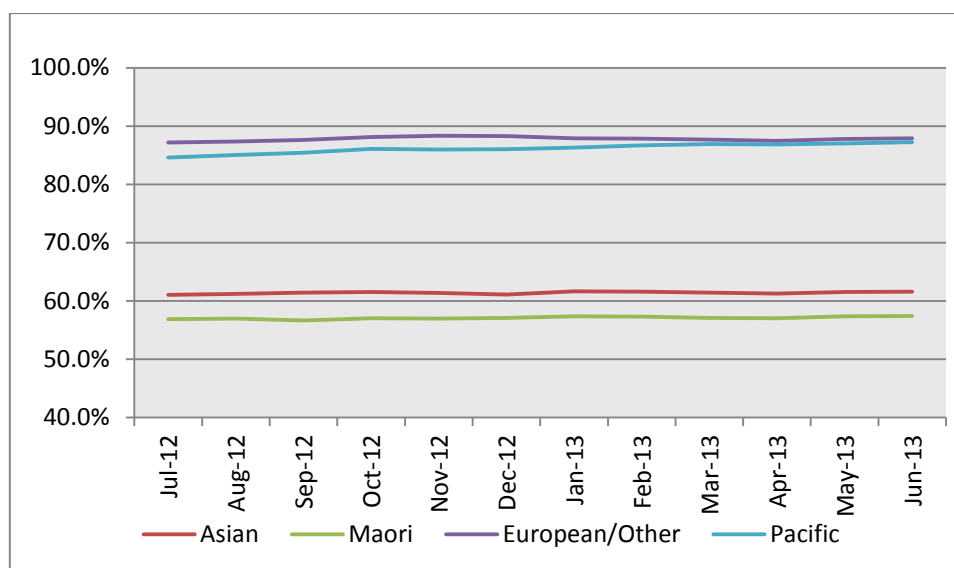
25-69 year old women screened in the three years to 30 June 2013, as a proportion of the hysterectomy adjusted 2006 Census based female population in the Auckland DHB Region.



	Population	3 year coverage (n)	3 year coverage (%)
Asian	41,168	25,363	61.6%
Maori	9,133	5,246	57.4%
European/Other	69,457	61,051	87.9%
Pacific	11,514	10,045	87.2%
Total	131,272	101,705	77.5%

## 2. NCSP summary monthly coverage to 30 June 2013 – Auckland DHB

Monthly coverage trends for 25-69 year old women screened in the three years to 30 June 2013 by Ethnicity, as a proportion of the hysterectomy adjusted 2006 Census based female population in the Auckland DHB region.



Target: 80% for all population groups by 31 December 2014.

### 3. How was your DHB performing as at 30 June 2013?

Rank		Jun-13	% change from June 2012	Jun-12
1	Taranaki	85.2%	0.4%	84.8%
2	Wairarapa	81.5%	-0.9%	82.4%
3	Hawkes Bay	81.3%	0.9%	80.4%
4	Nelson Marlborough	80.8%	-0.2%	81.0%
5	Bay of Plenty	80.2%	0.3%	79.9%
6	Capital&Coast	80.0%	-1.4%	81.4%
7	Lakes	79.9%	-0.8%	80.7%
8	Hutt Valley	79.5%	-0.5%	79.9%
9	Tairāwhiti	78.9%	-1.0%	79.8%
10	Southern	78.5%	0.1%	78.4%
11	West Coast	77.9%	3.4%	74.5%
<b>12</b>	<b>Auckland</b>	<b>77.5%</b>	<b>0.8%</b>	<b>76.7%</b>
13	Waikato	77.4%	0.2%	77.2%
14	National	76.8%	-0.1%	77.0%
15	Whanganui	76.4%	-1.1%	77.5%
16	South Canterbury	76.1%	0.3%	75.8%
17	Northland	75.7%	-0.7%	76.4%
18	Waitemata	75.5%	-0.1%	75.7%
19	MidCentral	75.4%	-0.3%	75.7%
20	Canterbury	74.8%	-0.6%	75.4%
21	Counties Manukau	69.3%	-0.4%	69.7%

### 4. NCSP summary monthly coverage to 30 June 2013 – DHB vs National

Monthly coverage trends for 25-69 year old women screened in the three years to 30 June 2013, as a proportion of the hysterectomy adjusted 2006 Census based female population in New Zealand.

