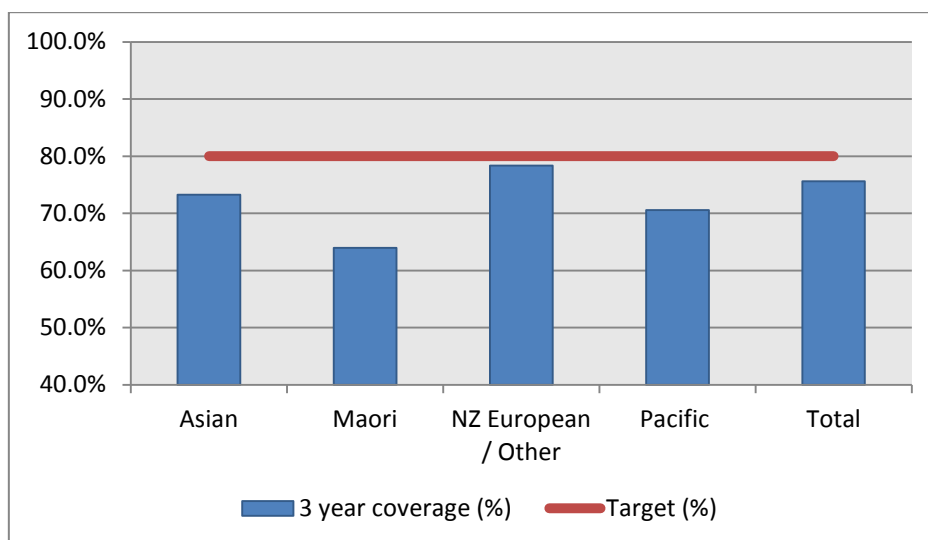


### 1. NCSP coverage – MidCentral DHB Region – 31 Dec 2012 quarter

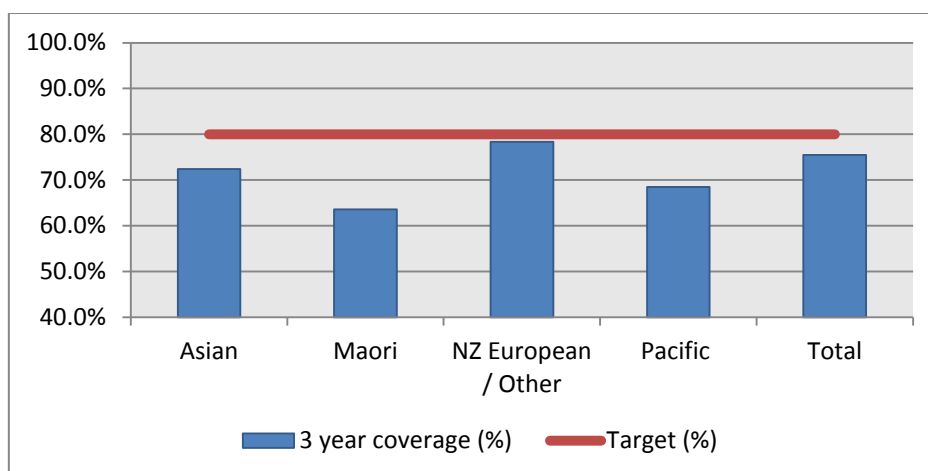
25-69 year old women screened in the three years to 31 December 2012, as a proportion of the hysterectomy adjusted 2006 Census based female population in the MidCentral DHB Region.



	Population	3 year coverage (n)	3 year coverage (%)
Asian	2,265	1,659	73.3%
Maori	6,541	4,184	64.0%
NZ European / Other	30,920	24,233	78.4%
Pacific	843	595	70.6%
Total	40,568	30,671	75.6%

### 2. NCSP coverage – MidCentral DHB Region – 30 Sep 2012 quarter

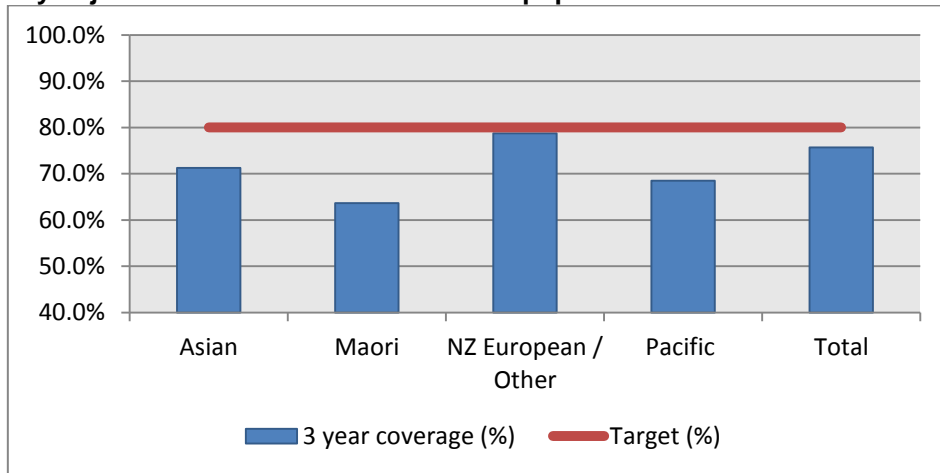
25-69 year old women screened in the three years to 30 September 2012, as a proportion of the hysterectomy adjusted 2006 Census based female population in the MidCentral DHB Region.



	Population	3 year coverage (n)	3 year coverage (%)
Asian	2,252	1,630	72.4%
Maori	6,511	4,140	63.6%
NZ European / Other	30,886	24,202	78.4%
Pacific	834	571	68.5%
Total	40,484	30,543	75.4%

**3. NCSP coverage – MidCentral DHB Region – 30 June 2012 quarter**

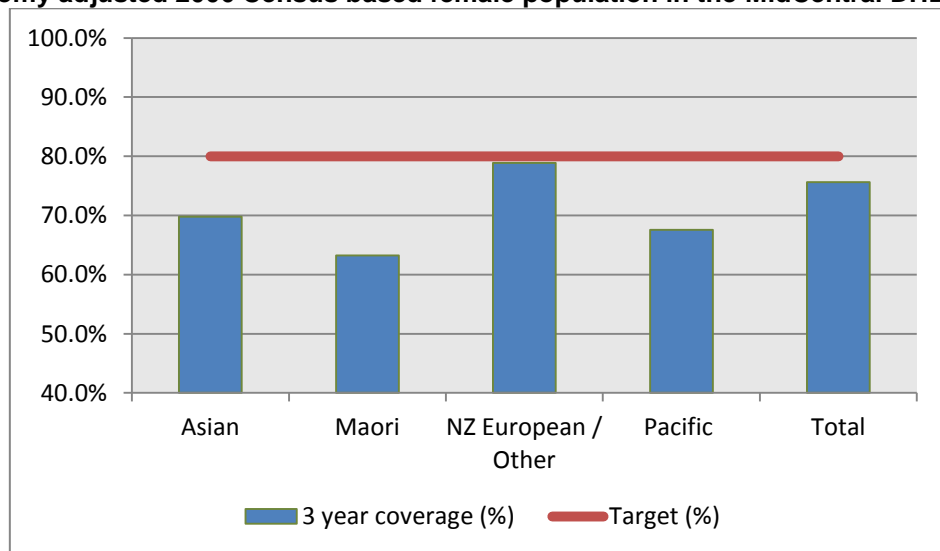
25-69 year old women screened in the three years to 30 June 2012, as a proportion of the hysterectomy adjusted 2006 Census based female population in the MidCentral DHB Region.



	Population	3 year coverage (n)	3 year coverage (%)
Asian	2,240	1,596	71.2%
Maori	6,482	4,125	63.6%
NZ European / Other	30,853	24,286	78.7%
Pacific	825	565	68.5%
Total	40,400	30,572	75.7%

**4. NCSP coverage – MidCentral DHB Region – 31 March 2012 quarter**

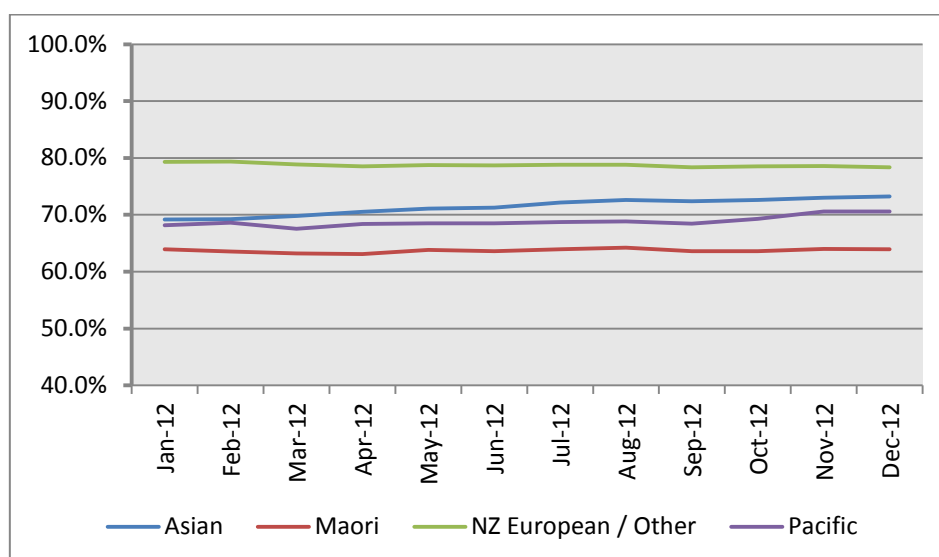
25-69 year old women screened in the three years to 31 March 2012, as a proportion of the hysterectomy adjusted 2006 Census based female population in the MidCentral DHB Region.



	Population	3 year coverage (n)	3 year coverage (%)
Asian	2,227	1,554	69.8%
Maori	6,441	4,072	63.2%
NZ European / Other	30,875	24,354	78.9%
Pacific	820	554	67.5%
Total	40,364	30,534	75.6%

## 5. NCSP summary monthly coverage to 31 Dec 2012 – MidCentral DHB

Monthly coverage trends for 25-69 year old women screened in the three years to 31 December 2012 by Ethnicity, as a proportion of the hysterectomy adjusted 2006 Census based female population in the MidCentral DHB region.



Target: 80% for all population groups by 31 December 2014.

## 6. How was your DHB performing as at 31 December 2012?

Rank	DHB	Dec 2012 Coverage	% change from Jan 2012	Jan 2012 Coverage
1	Taranaki	85.6%	2.2%	83.4%
2	Hawkes Bay	82.0%	1.7%	80.3%
3	Wairarapa	81.8%	-0.8%	82.6%
4	Nelson Marlborough	81.1%	1.3%	79.9%
5	Capital&Coast	81.1%	-0.8%	81.9%
6	Lakes	80.5%	0.5%	80.0%
7	Bay of Plenty	80.1%	0.1%	80.0%
8	Hutt Valley	79.9%	-0.2%	80.1%
9	Tairāwhiti	79.9%	2.3%	77.5%
10	Southern	79.1%	0.9%	78.2%
11	West Coast	78.1%	6.0%	72.1%
12	Waikato	77.6%	0.5%	77.0%
13	Auckland	77.5%	1.3%	76.2%
14	South Canterbury	76.9%	0.6%	76.3%
15	Whanganui	76.7%	-1.0%	77.7%
16	Northland	76.5%	-0.5%	77.1%
17	Waitemata	75.7%	-0.1%	75.8%
18	Canterbury	75.6%	-0.3%	75.9%
<b>19</b>	<b>Mid Central</b>	<b>75.6%</b>	<b>-0.5%</b>	<b>76.1%</b>
20	Counties Manukau	69.7%	0.1%	69.7%

On 1 May 2010 Southland and Otago DHBs merged to create Southern DHB.

## 7. NCSP summary monthly coverage to 31 Dec 2012 – National

Monthly coverage trends for 25-69 year old women screened in the three years to 31 December 2012, as a proportion of the hysterectomy adjusted 2006 Census based female population in New Zealand.

