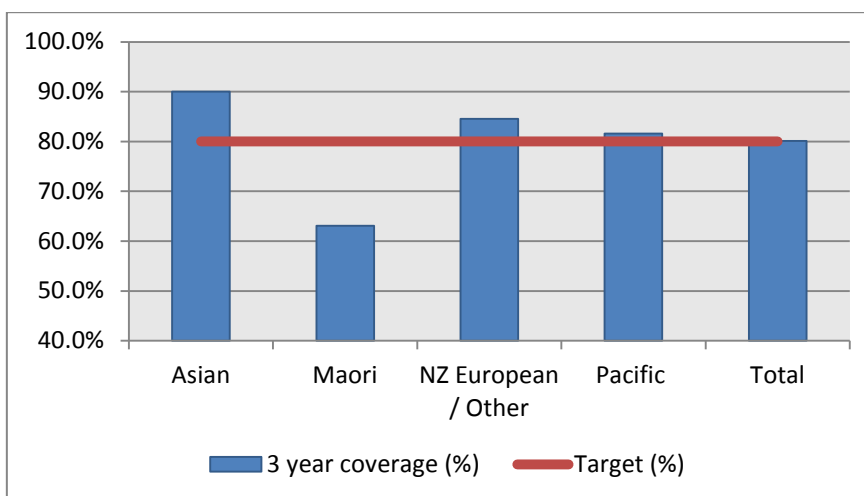


1. NCSP coverage – Bay of Plenty DHB Region – 31 Dec 2012 quarter

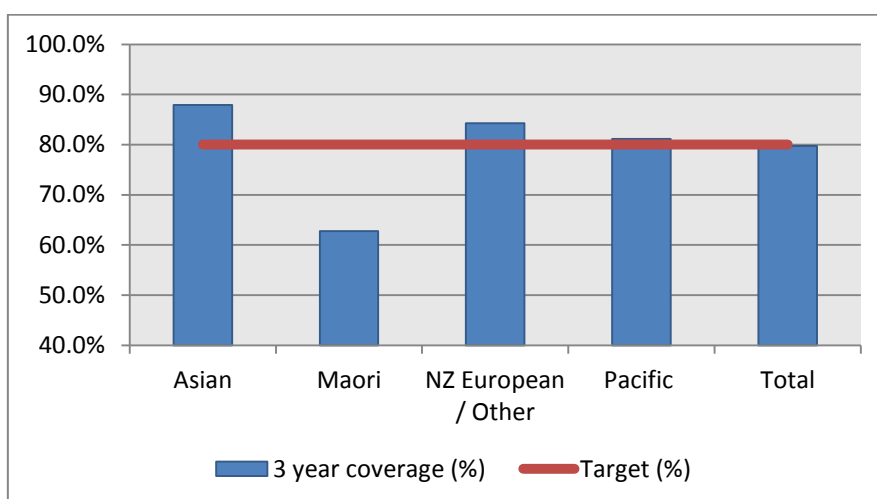
25-69 year old women screened in the three years to 31 December 2012, as a proportion of the hysterectomy adjusted 2006 Census based female population in the Bay of Plenty DHB Region.



	Population	3 year coverage (n)	3 year coverage (%)
Asian	1,946	1,751	90.0%
Maori	11,348	7,156	63.1%
NZ European / Other	38,949	32,927	84.5%
Pacific	576	470	81.6%
Total	52,819	42,304	80.1%

2. NCSP coverage – Bay of Plenty DHB Region – 30 Sep 2012 quarter

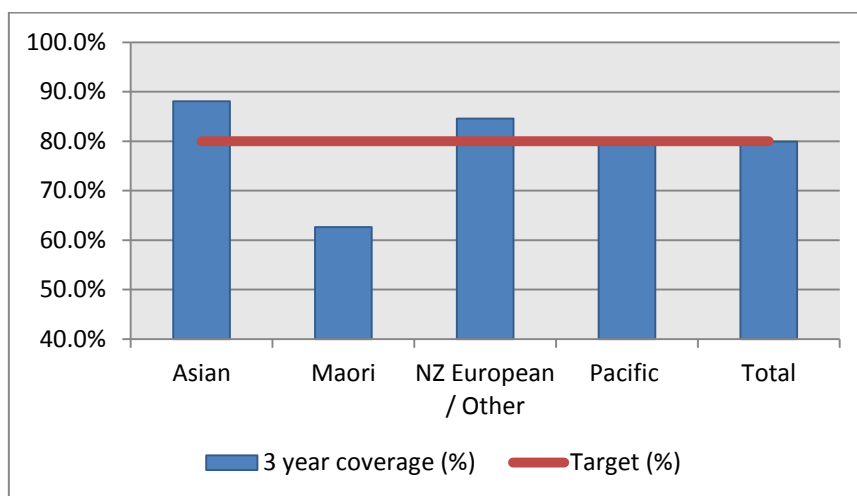
25-69 year old women screened in the three years to 30 September 2012, as a proportion of the hysterectomy adjusted 2006 Census based female population in the Bay of Plenty DHB Region.



	Population	3 year coverage (n)	3 year coverage (%)
Asian	1,927	1,694	87.9%
Maori	11,311	7,096	62.7%
NZ European / Other	38,816	32,716	84.3%
Pacific	578	469	81.1%
Total	52,632	41,975	79.8%

3. NCSP coverage – Bay of Plenty DHB Region – 30 June 2012 quarter

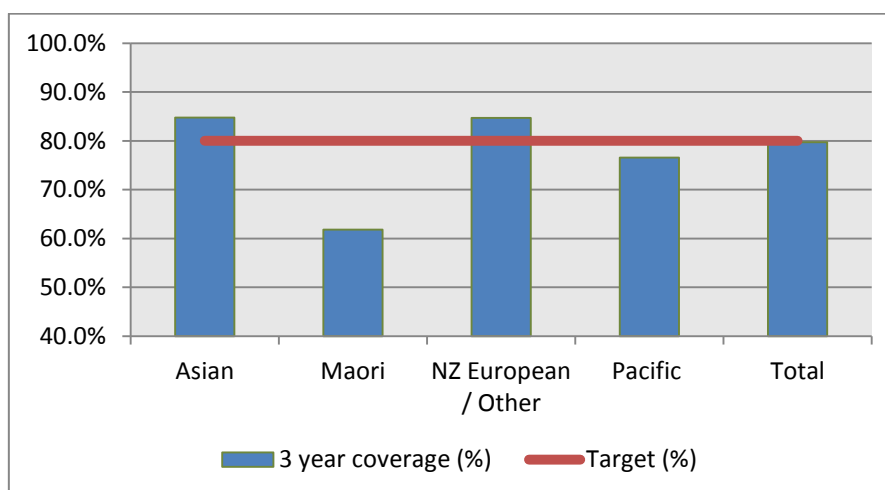
25-69 year old women screened in the three years to 30 June 2012, as a proportion of the hysterectomy adjusted 2006 Census based female population in the Bay of Plenty DHB Region.



	Population	3 year coverage (n)	3 year coverage (%)
Asian	1,909	1,681	88.1%
Maori	11,273	7,059	62.6%
NZ European / Other	38,683	32,709	84.6%
Pacific	580	463	79.8%
Total	52,444	41,912	79.9%

4. NCSP coverage – Bay of Plenty DHB Region – 31 March 2012 quarter

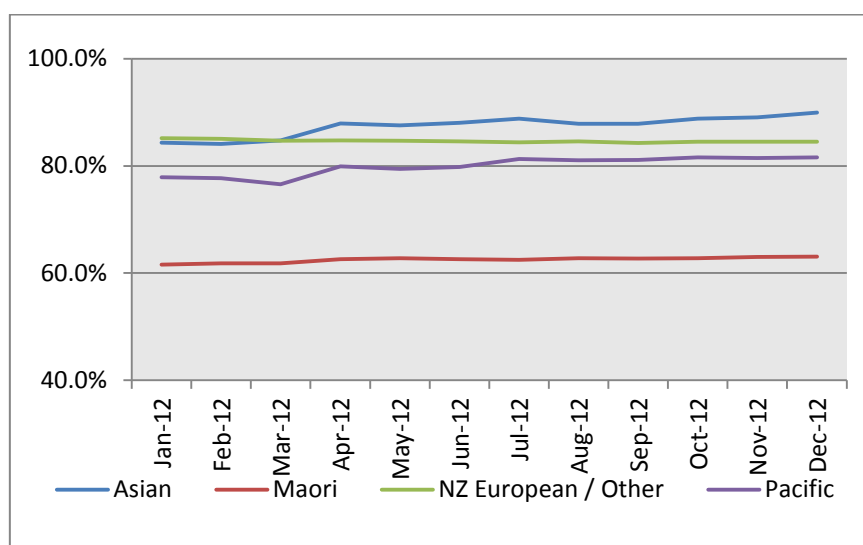
25-69 year old women screened in the three years to 31 March 2012, as a proportion of the hysterectomy adjusted 2006 Census based female population in the Bay of Plenty DHB Region.



	Population	3 year coverage (n)	3 year coverage (%)
Asian	1,892	1,604	84.8%
Maori	11,235	6,943	61.8%
NZ European / Other	38,594	32,688	84.7%
Pacific	577	442	76.6%
Total	52,299	41,677	79.7%

5. NCSP summary monthly coverage to 31 Dec 2012 – Bay of Plenty DHB

Monthly coverage trends for 25-69 year old women screened in the three years to 31 December 2012 by Ethnicity, as a proportion of the hysterectomy adjusted 2006 Census based female population in the Bay of Plenty DHB region.



Target: 80% for all population groups by 31 December 2014.

6. How was your DHB performing as at 31 December 2012?

Rank	DHB	Dec 2012 Coverage	% change from Jan 2012	Jan 2012 Coverage
1	Taranaki	85.6%	2.2%	83.4%
2	Hawkes Bay	82.0%	1.7%	80.3%
3	Wairarapa	81.8%	-0.8%	82.6%
4	Nelson Marlborough	81.1%	1.3%	79.9%
5	Capital&Coast	81.1%	-0.8%	81.9%
6	Lakes	80.5%	0.5%	80.0%
7	Bay of Plenty	80.1%	0.1%	80.0%
8	Hutt Valley	79.9%	-0.2%	80.1%
9	Tairāwhiti	79.9%	2.3%	77.5%
10	Southern	79.1%	0.9%	78.2%
11	West Coast	78.1%	6.0%	72.1%
12	Waikato	77.6%	0.5%	77.0%
13	Auckland	77.5%	1.3%	76.2%
14	South Canterbury	76.9%	0.6%	76.3%
15	Whanganui	76.7%	-1.0%	77.7%
16	Northland	76.5%	-0.5%	77.1%
17	Waitemata	75.7%	-0.1%	75.8%
18	Canterbury	75.6%	-0.3%	75.9%
19	Mid Central	75.6%	-0.5%	76.1%
20	Counties Manukau	69.7%	0.1%	69.7%

On 1 May 2010 Southland and Otago DHBs merged to create Southern DHB.

7. NCSP summary monthly coverage to 31 Dec 2012 – National

Monthly coverage trends for 25-69 year old women screened in the three years to 31 December 2012, as a proportion of the hysterectomy adjusted 2006 Census based female population in the Bay of Plenty DHB region and in New Zealand.

