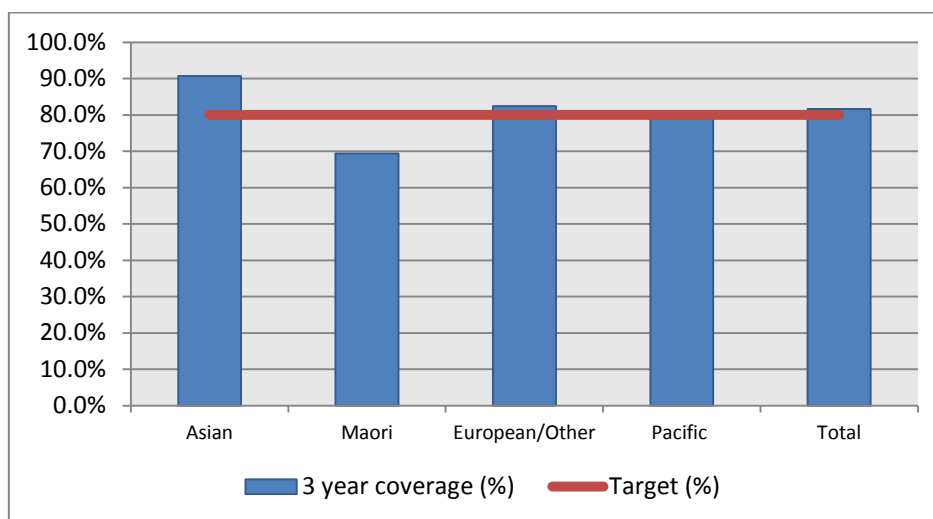


1. NCSP coverage – Nelson Marlborough DHB Region – 31 December 2013 quarter

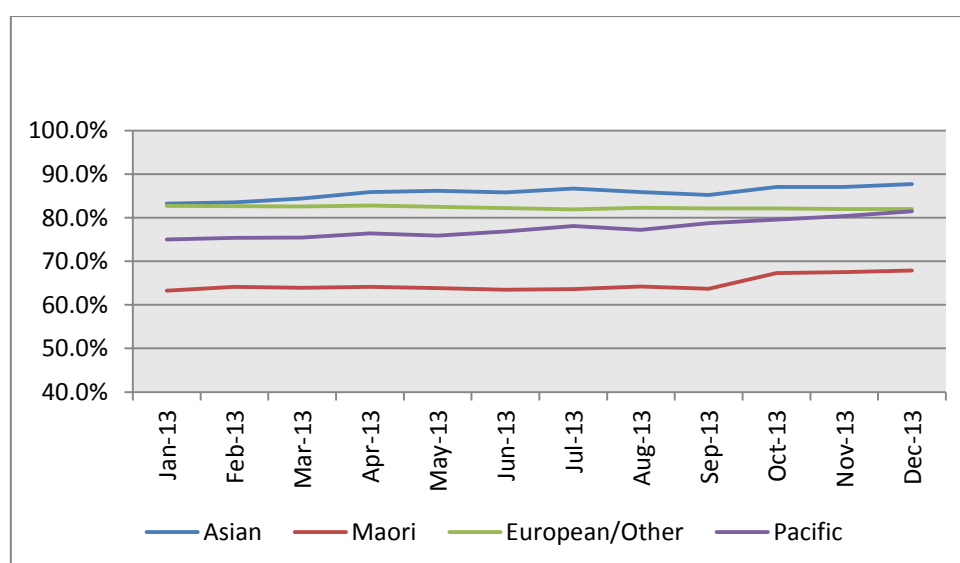
25-69 year old women screened in the three years to 31 December 2013, as a proportion of the hysterectomy adjusted 2006 Census based female population in the Nelson Marlborough DHB Region.



	Population	3 year coverage (n)	3 year coverage (%)
Asian	974	883	90.7%
Maori	2,824	1,959	69.4%
European/Other	32,161	26,520	82.5%
Pacific	346	276	79.7%
Total	36,304	29,638	81.6%

2. NCSP summary monthly coverage to 31 December 2013 – Nelson Marlborough DHB

Monthly coverage trends for 25-69 year old women screened in the three years to 31 December 2013 by Ethnicity, as a proportion of the hysterectomy adjusted 2006 Census based female population in the Nelson Marlborough DHB region.



Target: 80% for all population groups by 31 December 2014.

3. How was your DHB performing as at 31 December 2013?

DHB	Dec-13	% change from Dec 2012	Dec-12
Taranaki	86.4%	0.8%	85.6%
Nelson Marlborough	81.6%	0.5%	81.1%
Hawkes Bay	81.6%	-0.5%	82.0%
Wairarapa	81.4%	-0.3%	81.8%
Bay of Plenty	79.8%	-0.3%	80.1%
Capital&Coast	79.6%	-1.5%	81.1%
Lakes	79.3%	-1.2%	80.5%
Southern	79.3%	0.2%	79.1%
Hutt Valley	78.5%	-1.4%	79.9%
West Coast	78.2%	0.1%	78.1%
South Canterbury	77.5%	0.7%	76.9%
Tairāwhiti	77.5%	-2.3%	79.9%
Waikato	77.4%	-0.2%	77.6%
National	77.0%	-0.2%	77.2%
Auckland	76.9%	-0.6%	77.5%
Waitemata	76.2%	0.4%	75.7%
Mid Central	76.1%	0.5%	75.6%
Whanganui	75.8%	-0.9%	76.7%
Northland	75.8%	-0.7%	76.5%
Canterbury	75.6%	0.0%	75.6%
Counties Manukau	69.8%	0.1%	69.7%

4. NCSP summary monthly coverage to 31 December 2013 – DHB vs National

Monthly coverage trends for 25-69 year old women screened in the three years to 31 December 2013, as a proportion of the hysterectomy adjusted 2006 Census based female population in New Zealand.

