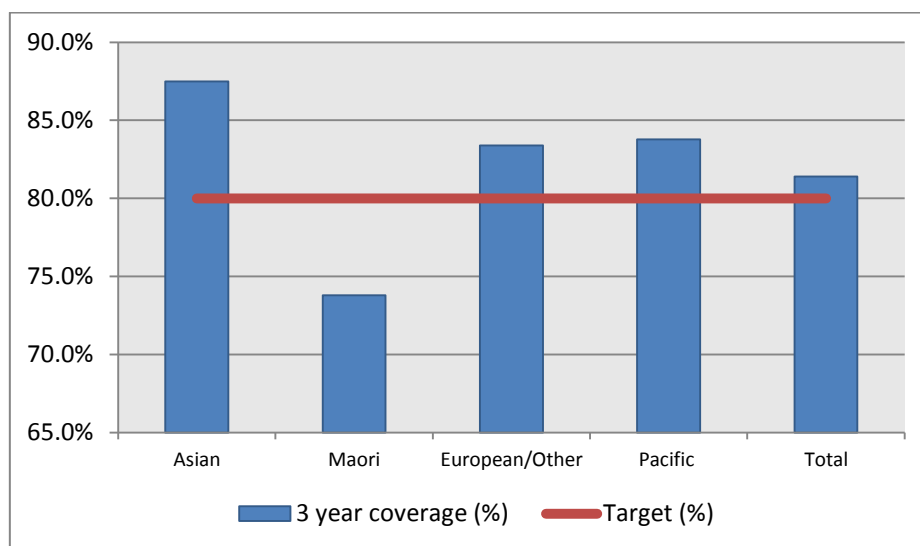


## 1. NCSP coverage – Hawkes Bay DHB Region – 30 September 2013 quarter

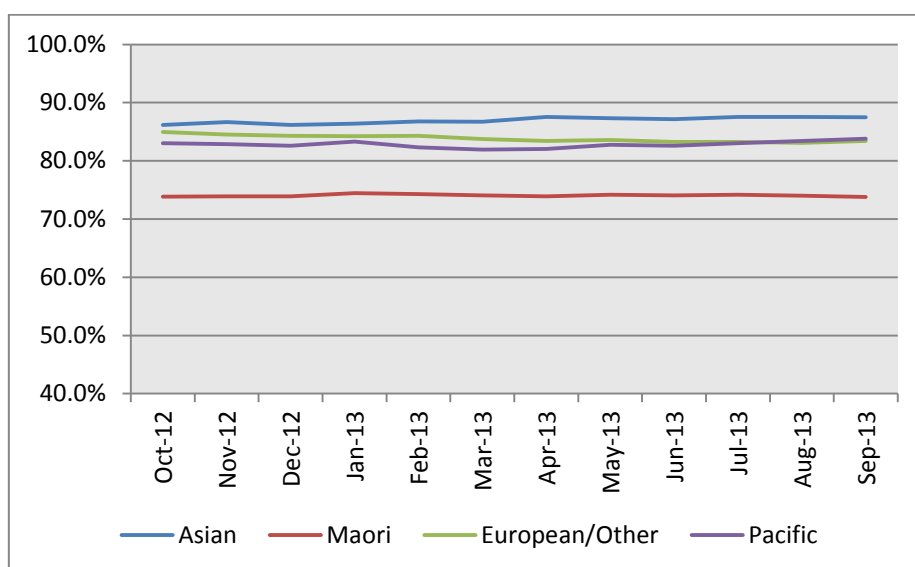
25-69 year old women screened in the three years to 30 September 2013, as a proportion of the hysterectomy adjusted 2006 Census based female population in the Hawkes Bay DHB Region.



|                | Population | 3 year coverage (n) | 3 year coverage (%) |
|----------------|------------|---------------------|---------------------|
| Asian          | 1,174      | 1,027               | 87.5%               |
| Maori          | 8,504      | 6,275               | 73.8%               |
| European/Other | 27,831     | 23,210              | 83.4%               |
| Pacific        | 997        | 835                 | 83.8%               |
| Total          | 38,506     | 31,347              | 81.4%               |

## 2. NCSP summary monthly coverage to 30 September 2013 – Hawkes Bay DHB

Monthly coverage trends for 25-69 year old women screened in the three years to 30 September 2013 by ethnicity, as a proportion of the hysterectomy adjusted 2006 Census based female population in the Hawkes Bay DHB region.



Target: 80% for all population groups by 31 December 2014.

### 3. How was your DHB performing as at 30 September 2013?

| Rank | DHB                | Sep-13 | % change from Sep 2012 | Sep-12 |
|------|--------------------|--------|------------------------|--------|
| 1    | Taranaki           | 85.6%  | 0.4%                   | 85.2%  |
| 2    | Hawkes Bay         | 81.4%  | 0.2%                   | 81.2%  |
| 3    | Wairarapa          | 81.4%  | 0.0%                   | 81.4%  |
| 4    | Nelson Marlborough | 81.1%  | 0.1%                   | 81.0%  |
| 5    | Bay of Plenty      | 79.9%  | 0.1%                   | 79.8%  |
| 6    | Capital&Coast      | 79.8%  | -1.3%                  | 81.1%  |
| 7    | Lakes              | 79.3%  | -1.1%                  | 80.4%  |
| 8    | Southern           | 79.0%  | 0.2%                   | 78.8%  |
| 9    | Hutt Valley        | 78.8%  | -1.1%                  | 79.9%  |
| 10   | Tairāwhiti         | 78.4%  | -1.5%                  | 79.9%  |
| 11   | West Coast         | 77.7%  | 1.4%                   | 76.3%  |
| 12   | Waikato            | 77.5%  | 0.2%                   | 77.3%  |
| 13   | Auckland           | 77.1%  | -0.1%                  | 77.2%  |
| 14   | National           | 76.9%  | -0.1%                  | 77.0%  |
| 15   | South Canterbury   | 76.5%  | 0.3%                   | 76.2%  |
| 16   | Whanganui          | 76.2%  | -1.0%                  | 77.1%  |
| 17   | Northland          | 75.8%  | -0.6%                  | 76.4%  |
| 18   | Mid Central        | 75.8%  | 0.4%                   | 75.4%  |
| 19   | Waitemata          | 75.8%  | 0.3%                   | 75.5%  |
| 20   | Canterbury         | 75.4%  | -0.2%                  | 75.6%  |
| 21   | Counties Manukau   | 69.6%  | 0.0%                   | 69.6%  |

### 4. NCSP summary monthly coverage to 30 September 2013 – DHB vs National

Monthly coverage trends for 25-69 year old women screened in the three years to 30 September 2013, as a proportion of the hysterectomy adjusted 2006 Census based female population in New Zealand.

