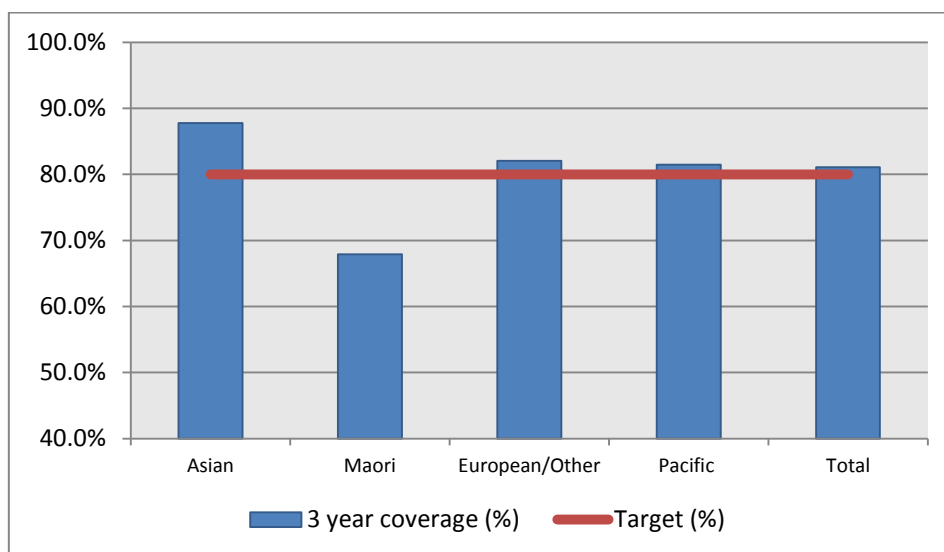


## 1. NCSP coverage – Nelson Marlborough DHB Region – 30 September 2013 quarter

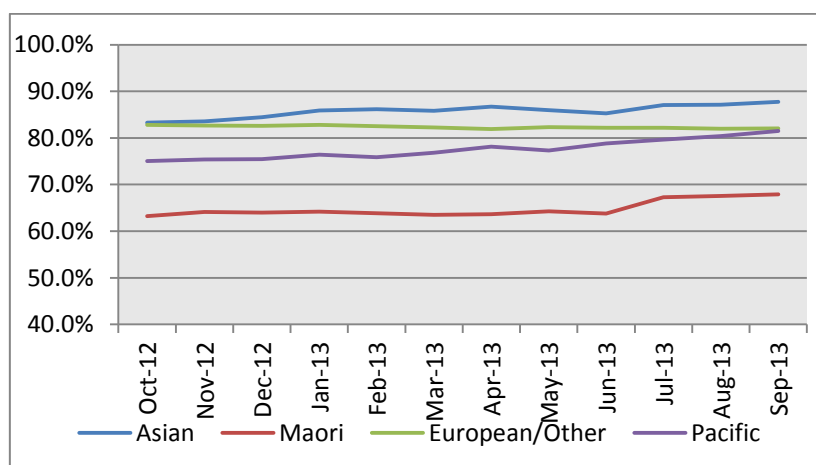
25-69 year old women screened in the three years to 30 September 2013, as a proportion of the hysterectomy adjusted 2006 Census based female population in the Nelson Marlborough DHB Region.



	Population	3 year coverage (n)	3 year coverage (%)
Asian	964	846	87.7%
Maori	2,807	1,906	67.9%
European/Other	32,098	26,335	82.0%
Pacific	341	278	81.5%
Total	36,211	29,365	81.1%

## 2. NCSP summary monthly coverage to 30 September 2013 – Nelson Marlborough DHB

Monthly coverage trends for 25-69 year old women screened in the three years to 30 September 2013 by ethnicity, as a proportion of the hysterectomy adjusted 2006 Census based female population in the Nelson Marlborough DHB region.



Target: 80% for all population groups by 31 December 2014.

### 3. How was your DHB performing as at 30 September 2013?

Rank	DHB	Sep-13	% change from Sep 2012	Sep-12
1	Taranaki	85.6%	0.4%	85.2%
2	Hawkes Bay	81.4%	0.2%	81.2%
3	Wairarapa	81.4%	0.0%	81.4%
4	Nelson Marlborough	81.1%	0.1%	81.0%
5	Bay of Plenty	79.9%	0.1%	79.8%
6	Capital&Coast	79.8%	-1.3%	81.1%
7	Lakes	79.3%	-1.1%	80.4%
8	Southern	79.0%	0.2%	78.8%
9	Hutt Valley	78.8%	-1.1%	79.9%
10	Tairāwhiti	78.4%	-1.5%	79.9%
11	West Coast	77.7%	1.4%	76.3%
12	Waikato	77.5%	0.2%	77.3%
13	Auckland	77.1%	-0.1%	77.2%
14	National	76.9%	-0.1%	77.0%
15	South Canterbury	76.5%	0.3%	76.2%
16	Whanganui	76.2%	-1.0%	77.1%
17	Northland	75.8%	-0.6%	76.4%
18	Mid Central	75.8%	0.4%	75.4%
19	Waitemata	75.8%	0.3%	75.5%
20	Canterbury	75.4%	-0.2%	75.6%
21	Counties Manukau	69.6%	0.0%	69.6%

### 4. NCSP summary monthly coverage to 30 September 2013 – DHB vs National

Monthly coverage trends for 25-69 year old women screened in the three years to 30 September 2013, as a proportion of the hysterectomy adjusted 2006 Census based female population in New Zealand.

