

**BreastScreen Aotearoa**

**INDEPENDENT MONITORING REPORT  
JANUARY-JUNE, 2005**

**Dr Andrew Page**

**Professor Richard Taylor**

**School of Population Health  
University of Queensland**

## TABLE OF CONTENTS

|  |    |
|--|----|
| EXECUTIVE SUMMARY .....  | 3  |
| 1. COVERAGE.....   | 6  |
| 1.a.1. Overall coverage of eligible women.....                                     | 6  |
| 1.a.2. The percentage of screens that are initial and subsequent screens .....     | 8  |
| 1.a.3. The percentage of Women Screened by Type of Screening Unit.....             | 9  |
| 1.a.4 Age-specific coverage women aged 50-64 years .....                           | 11 |
| 1.a.7. Coverage by Ethnicity, Summary for last 2 years .....                       | 12 |
| 1.a.8. Coverage of Maori women.....  | 13 |
| 1.a.9. Coverage of Pacific women.....  | 14 |
| 1.a.10. Coverage of Other women.....   | 15 |
| 1.b. Routine re-screening .....  | 16 |
| 2. PROVISION OF HIGH QUALITY SCREENING AND ASSESSMENT .....                        | 17 |
| 2.a. Screened women who have no more than four films taken.....                    | 17 |
| 2.b. Technical Recall Rate .....   | 19 |
| 2.c. Technical reject rate .....   | 21 |
| 2.d. Assessment Rate .....   | 23 |
| 2.e. False Positive Rate .....   | 25 |
| 2.f. Positive Predictive Value.....  | 27 |
| 2.g. Benign biopsy weight.....   | 29 |
| 2.h. Pre-operative diagnosis rate .....  | 30 |
| 2.i. Specificity .....   | 31 |
| 2.m. Benign Biopsy Rate .....  | 33 |
| 3. EARLY DETECTION OF DCIS OR INVASIVE BREAST CANCER .....                         | 34 |
| 3.a. DCIS and invasive cancer, last 6 months .....                                 | 34 |
| 3.b. DCIS and invasive cancer, last 2 years .....                                  | 36 |
| 3.a.1. Summary initial screening .....   | 37 |
| 3.a.2. Summary subsequent screening .....  | 38 |
| 3.b. Invasive cancers <=10mm, women.....   | 40 |
| 3.c. Invasive cancer <15 mm.....   | 41 |
| 3.d. Nodal involvement.....  | 42 |
| 3.e. DCIS.....   | 43 |
| 4. TREATMENT .....   | 44 |
| 4.a. Invasive cancers >1mm having a surgical axillary procedure.....               | 44 |
| 4.b. Invasive cancers having single excision.....                                  | 44 |
| 4.c. DCIS with no axillary dissection.....   | 45 |
| 4.e. DCIS having breast conserving surgery .....                                   | 46 |
| 4.f. Invasive cancers <= 20 mm having breast conserving surgery.....               | 46 |
| 4.g. Proportion of invasive cancers having radiotherapy .....                      | 47 |
| 4.h. Proportion of DCIS having radiotherapy .....                                  | 47 |
| 4.i. Proportion of invasive cancers having chemotherapy.....                       | 48 |
| 4.j. Proportion of invasive cancers having endocrine therapy.....                  | 49 |
| 5. PROVISION OF AN APPROPRIATE AND ACCEPTABLE SERVICE.....                         | 50 |
| 5.a. Time taken for provision of screening results .....                           | 50 |
| 5.b. Time taken from screening visit to first offer of an assessment.....          | 51 |
| 5.c. Time taken from assessment to final diagnostic biopsy .....                   | 52 |
| 5.d. Time taken from final diagnostic biopsy to reporting assessment results ..... | 54 |
| 5.e. First surgical treatment within 29 working days (Oct 01- Sept 03).....        | 55 |
| APPENDIX A: POPULATION DENOMINATORS AND NOTES ON METHOD .....                      | 56 |
| APPENDIX B: GLOSSARY OF TERMS.....   | 58 |

## EXECUTIVE SUMMARY

BreastScreen Aotearoa (BSA) has offered government funded biennial mammography screening for all NZ women aged 50-64 years since 1999. In July, 2004 the target age group was extended to include women aged 45-49 years and 65-69 years. This Internal Analysis Report includes the first 12 months of data for these additional age groups. For women aged 45-49 years and 65-69 years, a two year period has not yet elapsed, and the biennial data presented relates only to women 50-64 years.

### 1. Coverage

BSA screened 74,252 women aged 45-69 years over the 6 month period from January to June, 2005. There were 5,875 women screened aged 45-49 years, 54,511 women aged 50-64 years, and 13,866 women aged 65-69 years. For women aged 50-64 years, the biennial participation rate was 64%, which was below the target of 70%. Of biennial screens, 22% were initial screens and 78% were subsequent screens.

The re-screen rate for the six month period for women aged 50-64 years was 84% within 27 months (target value >85%), and 82% within 20-24 months (target value >75%). This is a commendable result, with most lead providers within 5 percentage points of the target.

For women aged 50-64 years a significantly lower biennial participation rate was evident for the eligible Maori and Pacific Islander populations (46% and 43% respectively), compared with remaining ethnic groups (66%).

### 2. Provision of quality screening and assessment

Most targets were met for indicators relating to the provision of quality screening and assessment for each age group for the previous 6 month period. Referral to assessment rates ranged from 7-8% for initial screens for women aged 45-69, and from 3-4% for subsequent screens (women 50-64 and 65-69 years only). For women 50-64 years the two year referral to assessment rate was 9% and 3% for initial and subsequent screens respectively.

False positive rates across age groups for the 6 month period ranged from 5-8% for initial screens, and from 2-3% for subsequent screens (women 50-64 and 65-69 years only). The positive predictive value (PPV) for the program (target  $\geq 9\%$ ) for the previous 6 months for initial screens was 6% for women 45-49 years, 7% for women 50-64 years, and 26% for women 65-69 years. For subsequent screens the PPV was 15% and 22% for women 50-64 years and 65-69 years respectively.

Expected targets were not met for a number of indicators. The proportion of women who had to return for further films to complete their screening episode (technical recall rate) for mobile units was statistically above the target value of <3%. There was variation across lead provider groups, however, overall technical recall rates were 4% for women aged 45-49 years, 4% for women 50-64 years, and 4% for women aged 65-69 years. The two year rate for women 50-64 years was 4% which was also above the target value.

The target for benign biopsies which weigh <30g also was not reached for women 50-64 years. The 2 year proportion for this group was 69% which was statistically below the >90% target value. Data on women 45-49 year and 65-69 years are not yet available.

### 3. Early detection of DCIS or invasive breast cancer

Most targets were met for indicators relating to early detection of DCIS or invasive breast cancers. Where estimates were marginal, the 95% Confidence interval (either lower or upper bound) contained the target value. Invasive cancers and DCIS are not currently reported separately by age group for the 6 month period or for a biennium.

Separate biennial cancer detection rates for invasive cancers and DCIS can be derived from the current data extract for women 50-64 years only. The BSA biennial invasive cancer detection rate for women aged 50-64 years was 6.0 per 1,000 women screened for initial screens (statistically lower than the target value of  $\geq 6.9$ ), and 3.6 per 1,000 for subsequent

screens (slightly above the target value of  $\geq 3.45$ ). This represented 859 invasive cancers detected by BSA for the previous 2 year period.

The biennial cancer detection rate - invasive and DCIS combined - for women aged 50-64 years was 7.3 per 1,000 for initial screens (not statistically different from the target value of  $\geq 6.9$  per 1,000) and 5.0 per 1,000 for subsequent screens (statistically higher than the target value of  $\geq 3.45$ ). This represented 1,154 cancers detected through BSA for the 2 year period. The proportion of DCIS of all cancers for this age group over the previous biennium was 24%, ranging from 13% to 29% across lead providers. The overall proportion of node negative cancers (of all invasive cancers) was 73% for initial screens and 77% for subsequent screens.

A total of 435 cases of invasive cancer and DCIS were detected through BSA in the previous 6 months for initial and subsequent screens combined. The BSA cancer detection rate for the six month period by age-group (DCIS and invasive combined) for initial screens was 5.3 per 1,000 women screened for women 45-49 years, 5.7 for women 50-64 years, and 17.9 for women 65-69 years. For subsequent screens the cancer detection rate was 5.0 for women aged 50-64 years and 8.4 per 1,000 for women aged 65-69 years. For all women the cancer detection rate for both initial and subsequent screens exceeded or approached the expected target value for initial screens ( $\geq 6.9$  per 1,000) and subsequent screens ( $\geq 3.45$  per 1,000).

For women 50-64 years the overall proportion of screen detected invasive cancers  $\leq 10$ mm in size for the previous 2 period was 28% for initial screens and 39% for subsequent screens. The corresponding detection rates per 10,000 women screened for invasive cancers  $\leq 10$ mm was 15.7 for initial screens (target value  $\geq 17.3$  per 10,000 screens) and 14.4 for subsequent screens (target value  $\geq 10.5$  per 10,000 screens).

The expected target value was not reached for overall detection rates of invasive cancers  $\leq 15$ mm in size for initial screens for the previous biennium (women 50-64 years only). The overall proportion of invasive cancers  $\leq 15$ mm for this age group was 44% which was statistically below the target value of  $>50\%$ . The detection rate per 10,000 women screened for this indicator was 24.5 which was also significantly below the target of  $>34.5$  per 10,000.

#### **4. Treatment**

The majority of targets (where available) were not met for indicators relating to treatment. Treatment data in this data extract was restricted to women aged 50-64 years for the previous 2 year period.

Target values were met for DCIS cases and invasive cases having breast conserving surgery (BCS). The overall proportion of screen detected DCIS having BCS was 82% and for invasive cancers having BCS was 65%, which was greater than the target value of  $>50\%$

The overall proportion of invasive cancers having a surgical axillary procedure was 91.0%, which was statistically below the target value of 95%, although the magnitude of this difference was less than 5%. There was variation across lead providers.

The overall proportion of women who had surgery for DCIS who did not have an axillary dissection was 77%, which was statistically below the target of 95%

The overall proportion of women diagnosed with invasive cancer who had BCS, who went on to have radiotherapy was 87%, which was statistically below the target of  $>95\%$ .

#### **5. Provision of an appropriate and acceptable service**

The majority of targets for indicators relating to the provision of an appropriate and acceptable service were not met, although in many cases the magnitude of the difference was less than 5%. A number of indicators were also marginal, with 95% Confidence intervals containing the target value.

The overall proportion of women in the previous 6 month period who were notified of screening results within 10 working days was 81% for 45-49 years, 84% for women 50-64 years, and 87% for women 65-69 years, which were all statistically below the target of >95%. For women 50-64 years, the biennial proportion of 94% was statistically below the target value.

The overall proportion of women offered a first assessment within 15 working days was statistically below the target value of 90% for all age groups. For women 45-49 years the percentage was 69%, for women 50-64 years the percentage was 76%, and for women 65-69 years the percentage was 79%. The 2 year rate for women 50-64 years (84%) was also statistically below the target value.

The proportion of women receiving an open biopsy (of those who required an open biopsy) for each age group also was statistically below the target value of 90% for the previous 6 month period. The overall proportion was 71% for women 45-49 years, 67% for women 50-64 years, and 65% for women 65-69 years. The biennial proportion for women 50-64 years was 73% which was statistically below the target value.

The proportion of women who received their final diagnostic biopsy results within 5 working days was also statistically below the target value of 90% for women aged 45-49 years and 50-64 years. The overall proportion was 78% for women 45-49 years, 85% for women 50-64 years, and 90% for women aged 65-69 years.

## **6. Conclusion**

BSA is a population-based mammography screening program that has participation rates across the target age group 45-69 years approaching the target of 70%, notwithstanding the recent age extension into the 45-49 and 65-69 year age groups. Overall, targets for key indicators are being exceeded, or are close to being achieved (for indicators that are marginal, the 95% confidence interval usually contain the target value). There is also variation for some indicators across lead providers. Areas where target values were not met by BSA in the period covered in this report, and where differences between observed and expected values were of greatest magnitude, included (1) biennial invasive cancer detection rates for initial screens for women aged 50-64 years (2) technical recall rates for mobile screening units; (3) benign biopsies which weigh <30g; (4) invasive cancer detection rates for cancers ≤15mm in size; (5) and the proportion of women receiving specific treatments (surgical axillary procedures, radiotherapy). There were statistically significant differences between observed and target values for a number of other indicators, however the magnitude of these differences were small (<5%) and may not be a difference of practical significance. These indicators included the time taken to offer women assessments; the proportion of women offered open biopsies; and the time taken to notify women of final biopsy results.

## 1. COVERAGE

### 1.a. Coverage

#### 1.a.1. Overall coverage of eligible women

*Description:* This is a population-based measure of the percentage of women in the target age group (45-49, 50-64, 65-69 years) who have had a screening mammogram in the programme

*Target:* >= 70% of eligible women receive a screen within the program in the most recent 24month period

**Table 1a.1** Overall coverage of eligible women

| Lead Provider      | Eligible Population* | Last 6 Months            |            | Last 2 Years             |            |
|--------------------|----------------------|--------------------------|------------|--------------------------|------------|
|                    |                      | Jan 2005 to Jun 2005     |            | Jul 2003 to Jun 2005     |            |
|                    |                      | Number of Women Screened | Coverage % | Number of Women Screened | Coverage % |
| <i>45-49 years</i> |                      |                          |            |                          |            |
| BSAN               | 52145                | 1297                     | 2.5%       | 1352                     |            |
| BSM                | 22405                | 1842                     | 8.2%       | 1948                     |            |
| BSCtoC             | 19075                | 909                      | 4.8%       | 913                      |            |
| BSC                | 15750                | 479                      | 3.0%       | 523                      |            |
| BSS                | 24990                | 315                      | 1.3%       | 317                      |            |
| BSHC               | 10360                | 1033                     | 10.0%      | 1463                     |            |
| BSA Total          | 144725               | 5875                     | 4.1%       | 6516                     |            |
| <i>50-64 years</i> |                      |                          |            |                          |            |
| BSAN               | 114210               | 13975                    | 12.2%      | 60621                    | 53.1%      |
| BSM                | 51575                | 7377                     | 14.3%      | 30911                    | 59.9%      |
| BSCtoC             | 44175                | 6774                     | 15.3%      | 27420                    | 62.1%      |
| BSC                | 35660                | 6527                     | 18.3%      | 22994                    | 64.5%      |
| BSS                | 58795                | 15120                    | 25.7%      | 50714                    | 86.3%      |
| BSHC               | 23865                | 4738                     | 19.9%      | 17522                    | 73.4%      |
| BSA Total          | 328280               | 54511                    | 16.6%      | 210182                   | 64.0%      |
| <i>60-69 years</i> |                      |                          |            |                          |            |
| BSAN               | 23365                | 2575                     | 11.0%      | 6655                     |            |
| BSM                | 11935                | 2405                     | 20.2%      | 5760                     |            |
| BSCtoC             | 10335                | 1570                     | 15.2%      | 4162                     |            |
| BSC                | 7445                 | 1478                     | 19.9%      | 3524                     |            |
| BSS                | 12980                | 4685                     | 36.1%      | 8148                     |            |
| BSHC               | 5625                 | 1153                     | 20.5%      | 2080                     |            |
| BSA Total          | 71685                | 13866                    | 19.3%      | 30329                    |            |

Note: Eligible population is based on the 2004 projected population; Data for women aged 45-49 and 65-69 years represent 12 month period only.

#### **Comment:**

The number of screens in the 'Last 2 years' column for women aged 45-49 and 65-69 years throughout this report represent 12 months of data, as screening only commenced in these age groups in July, 2004.

#### **Overall coverage of eligible women aged 45-49 years.**

Screening in this age group commenced in July 2004, and consequently the low 6 monthly screening rate for the period January 2005 to June 2004 across lead providers is lower for the this age-group compared to older ages. The BSA program participation rate for this period was 4.1% with coverage across lead providers ranging from 1.3% (BSS) to 10.0% (BSHC). Participation rates were higher across lead providers than for the previous 6 month period. It is anticipated that coverage rates will continue to increase as the program matures for this age-group. The biennial participation rates in this table cannot be interpreted, as a biennium for this group has not yet elapsed.

#### **Overall coverage of eligible women aged 50-64 years.**

The BSA program coverage in the January 2005 to June 2005 period increased to 16.6% (compared with 14.7% in the previous reporting period), which resulted in a marginal increase in the 2 year biennial rate from 62.6% in the previous period to 64%. 4 of the 6 lead providers showed a slight increase in biennial participation, and 2 lead providers reached the target value of 70% (BSS, BSHC).

#### **Overall coverage of eligible women aged 65-69 years.**

Screening in the age group commenced in July 2004. Participation rates for the 6 month period are of a similar magnitude to the 50-64 year age group. The BSA program participation rate for the 6 month period was 19.3%, with participation rates across lead providers ranging from 11.0% to 36.1%. The overall program participation rate for this period was approximately 2% higher than the 50-64 year age group, and was similar to the BSA participation rate for the previous 6

month period. The biennial participation rates in this table cannot be interpreted, as a biennium for this group has not yet elapsed.

### 1.a.2. The percentage of screens that are initial and subsequent screens

**Table 1a.2** The percentage of screens that are Initial (Prevalent) and Subsequent

| Lead Provider      | Jul 2003 to Jun 2005        |                       |                               |                         | Total Screens |
|--------------------|-----------------------------|-----------------------|-------------------------------|-------------------------|---------------|
|                    | Initial (Prevalent) Screens |                       | Subsequent (Incident) Screens |                         |               |
|                    | Number of Women Screened    | Initial (Prevalent) % | Number of Women Screened      | Subsequent (Incident) % |               |
| <i>45-49 years</i> |                             |                       |                               |                         |               |
| BSAN               | 1351                        | 100%                  | 1                             | 0%                      | 1352          |
| BSM                | 1948                        | 100%                  | 0                             | 0%                      | 1948          |
| BSCtoC             | 912                         | 100%                  | 1                             | 0%                      | 913           |
| BSC                | 521                         | 100%                  | 2                             | 0%                      | 523           |
| BSS                | 317                         | 100%                  | 0                             | 0%                      | 317           |
| BSHC               | 1460                        | 100%                  | 3                             | 0%                      | 1463          |
| BSA Total          | 6509                        | 100%                  | 7                             | 0%                      | 6516          |
| <i>50-64 years</i> |                             |                       |                               |                         |               |
| BSAN               | 14303                       | 24%                   | 46318                         | 76%                     | 60621         |
| BSM                | 6611                        | 21%                   | 24300                         | 79%                     | 30911         |
| BSCtoC             | 5928                        | 22%                   | 21492                         | 78%                     | 27420         |
| BSC                | 6025                        | 26%                   | 16969                         | 74%                     | 22994         |
| BSS                | 9976                        | 20%                   | 40738                         | 80%                     | 50714         |
| BSHC               | 3185                        | 18%                   | 14337                         | 82%                     | 17522         |
| BSA Total          | 46028                       | 22%                   | 164154                        | 78%                     | 210182        |
| <i>65-69 years</i> |                             |                       |                               |                         |               |
| BSAN               | 877                         | 13%                   | 5778                          | 87%                     | 6655          |
| BSM                | 316                         | 5%                    | 5444                          | 95%                     | 5760          |
| BSCtoC             | 342                         | 8%                    | 3820                          | 92%                     | 4162          |
| BSC                | 297                         | 8%                    | 3227                          | 92%                     | 3524          |
| BSS                | 532                         | 7%                    | 7616                          | 93%                     | 8148          |
| BSHC               | 17                          | 1%                    | 2063                          | 99%                     | 2080          |
| BSA Total          | 2381                        | 8%                    | 27948                         | 92%                     | 30329         |

Note: Data for women aged 45-49 and 65-69 years represent 12 month period only.

#### Comment:

The rates presented in Table 1.a.2 are relative proportions of total women screened. An alternative indicator would be a population-based screening rate which would comprise the number of women screened (for initial and subsequent) divided by the total number of eligible women in the population.

#### The percentage of screens that are initial and subsequent screens, women aged 45-49 years

Screening in this age group commenced in July 2004, and therefore initial screens represent the total of all screens in this age-group.

#### The percentage of screens that are initial and subsequent screens, women aged 50-64 years

Of the total number of screens for the biennium concluding in June 2005, 22% were initial screens and 78% were subsequent screens with little variation by lead provider. Both the initial and subsequent proportions are similar to the previous 6 month period. It is expected that the initial screening rate will decrease further as a proportion of total screens as the program matures, as a greater proportion of women will return to the program for subsequent screens. Future initial screening rates should stabilise at a level reflecting the number of women who age into the target age group of the program.

#### The percentage of screens that are initial and subsequent screens, women aged 65-69 years

Screening in this age group commenced in July 2004. The majority of screens in this age group were subsequent screens (92% overall), with little variation by lead provider. Only 8% of screens in this age group were initial screens, ranging from 1% to 13% across lead providers.

### 1.a.3. The percentage of Women Screened by Type of Screening Unit

**Table 1a.3** The percentage of Women Screened by Type of Screening Unit

| Lead Provider      | Jul 2003 to Jun 2005     |         |                          |          | Total Screens |
|--------------------|--------------------------|---------|--------------------------|----------|---------------|
|                    | Fixed Site               |         | Mobile Site              |          |               |
|                    | Number of Women Screened | Fixed % | Number of Women Screened | Mobile % |               |
| <i>45-49 years</i> |                          |         |                          |          |               |
| BSAN               | 911                      | 67%     | 441                      | 33%      | 1352          |
| BSM                | 1356                     | 70%     | 592                      | 30%      | 1948          |
| BSCtoC             | 564                      | 62%     | 349                      | 38%      | 913           |
| BSC                | 349                      | 67%     | 174                      | 33%      | 523           |
| BSS                | 22                       | 7%      | 295                      | 93%      | 317           |
| BSHC               | 935                      | 64%     | 528                      | 36%      | 1463          |
| BSA Total          | 4137                     | 63%     | 2379                     | 37%      | 6516          |
| <i>50-64 years</i> |                          |         |                          |          |               |
| BSAN               | 50679                    | 84%     | 9942                     | 16%      | 60621         |
| BSM                | 23068                    | 75%     | 7843                     | 25%      | 30911         |
| BSCtoC             | 22112                    | 81%     | 5308                     | 19%      | 27420         |
| BSC                | 15807                    | 69%     | 7187                     | 31%      | 22994         |
| BSS                | 44888                    | 89%     | 5826                     | 11%      | 50714         |
| BSHC               | 12003                    | 69%     | 5519                     | 31%      | 17522         |
| BSA Total          | 168557                   | 80%     | 41625                    | 20%      | 210182        |
| <i>65-69 years</i> |                          |         |                          |          |               |
| BSAN               | 5395                     | 81%     | 1260                     | 19%      | 6655          |
| BSM                | 4444                     | 77%     | 1316                     | 23%      | 5760          |
| BSCtoC             | 3522                     | 85%     | 640                      | 15%      | 4162          |
| BSC                | 2530                     | 72%     | 994                      | 28%      | 3524          |
| BSS                | 7350                     | 90%     | 798                      | 10%      | 8148          |
| BSHC               | 1407                     | 68%     | 673                      | 32%      | 2080          |
| BSA Total          | 24648                    | 81%     | 5681                     | 19%      | 30329         |

**Comment:**

The proportion of screens performed at fixed sites and mobile units depends on the geography, and policies of various services, and subsequently there is a degree of variation across lead providers for this indicator. As noted in discussion of previous coverage indicators, the 45-49 year age group and the 65-69 year age group commenced screening in July, 2004. Thus, the biennium presented in Table 1.a.3 (July 2003 to Jun 2005) is incomplete for these age-groups

**The percentage of women screened by type of screening unit, women aged 45-49 years**

For the 6 month period January, 2005 to June, 2005 the BSA program proportions for fixed and mobile screening sites was 63% and 37% respectively. These proportions differed from older age groups. There was little variability across lead providers with the exception of BSS which conducted the majority (93%) of screens using mobile units.

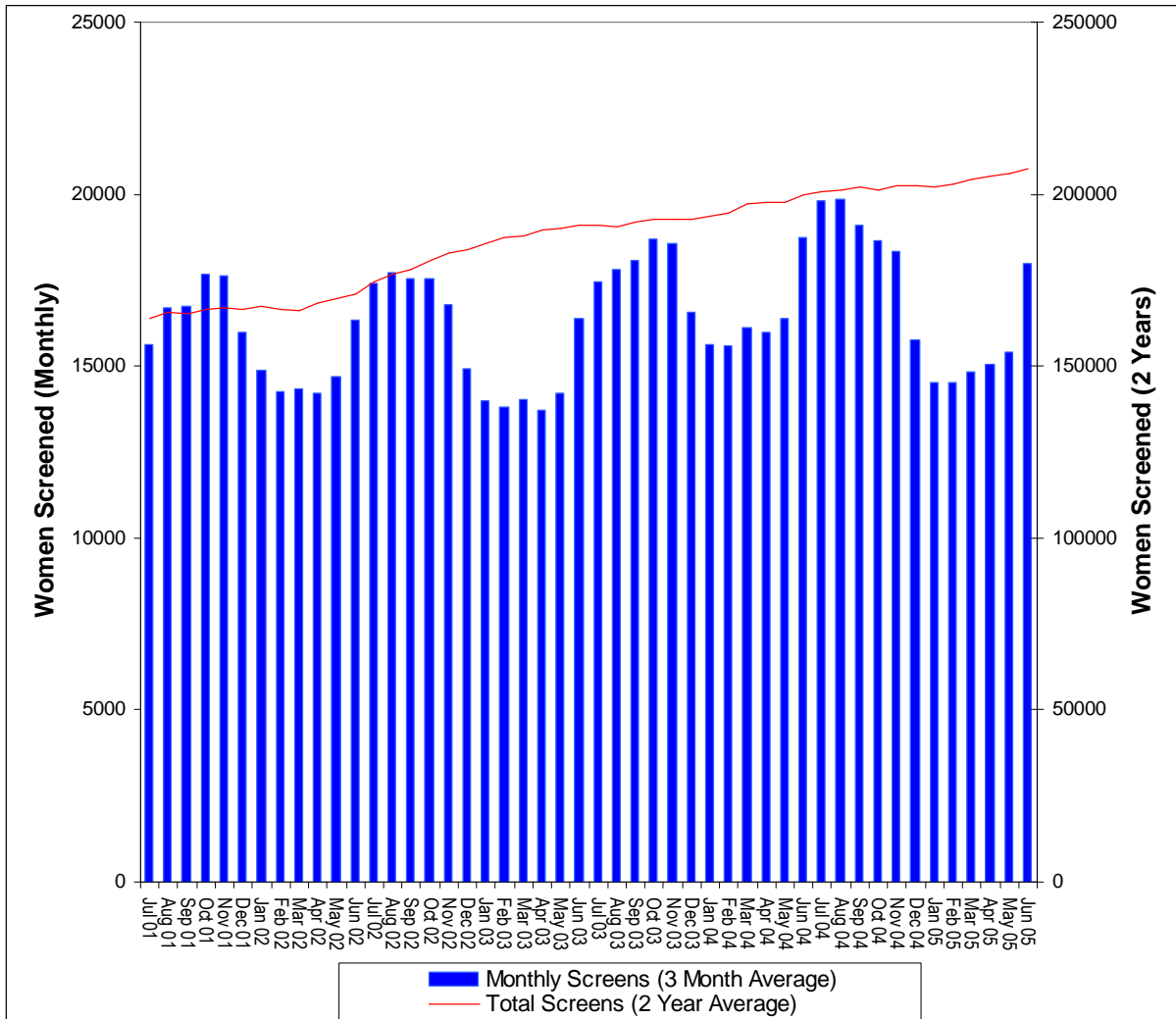
**The percentage of women screened by type of screening unit, women aged 50-64 years**

For the biennium July 2003 to June 2005, 80% of overall screens were conducted fixed sites and 20% of overall screens were conducted at mobile vans. This is similar to the previous 6 month period.

**The percentage of women screened by type of screening unit, women aged 65-69 years**

For the 6 month period January, 2005 to June, 2005, similar overall proportions were evident for the older age group as for the biennial rate in the 50-64 year age group. The proportion of BSA screens for fixed and mobile sites was 81% and 19% respectively.

**Graph 1.a. Overall Number of Screens by Month and Cumulative 24 Month Total, women aged 50-64 years**



**Comment:**

The 3 monthly variation in screening numbers shows similar pattern to previous years with lesser numbers in December and January than other months. This is presumably related to service factors (equipment maintenance, staff leave, etc) and client factors (vacation period).

#### 1.a.4 Age-specific coverage women aged 50-64 years

**Table 1a.4** Coverage of 50-54 year old eligible women

| Lead Provider      | Eligible Population* | Last 6 Months            |            | Last 2 Years             |            |
|--------------------|----------------------|--------------------------|------------|--------------------------|------------|
|                    |                      | Jan 2005 to Jun 2005     |            | Jul 2003 to Jun 2005     |            |
|                    |                      | Number of Women Screened | Coverage % | Number of Women Screened | Coverage % |
| <i>50-54 years</i> |                      |                          |            |                          |            |
| BSAN               | 44870                | 4820                     | 10.7%      | 22537                    | 50.2%      |
| BSM                | 19495                | 2671                     | 13.7%      | 10972                    | 56.3%      |
| BSCtoC             | 16810                | 2452                     | 14.6%      | 10051                    | 59.8%      |
| BSC                | 13725                | 2301                     | 16.8%      | 8610                     | 62.7%      |
| BSS                | 22435                | 5788                     | 25.8%      | 20230                    | 90.2%      |
| BSHC               | 8975                 | 1781                     | 19.8%      | 6679                     | 74.4%      |
| BSA Total          | 126310               | 19813                    | 15.7%      | 79079                    | 62.6%      |
| <i>55-59 years</i> |                      |                          |            |                          |            |
| BSAN               | 39290                | 5103                     | 13.0%      | 21824                    | 55.5%      |
| BSM                | 17485                | 2549                     | 14.6%      | 10762                    | 61.5%      |
| BSCtoC             | 14990                | 2373                     | 15.8%      | 9731                     | 64.9%      |
| BSC                | 12460                | 2345                     | 18.8%      | 8186                     | 65.7%      |
| BSS                | 20435                | 5298                     | 25.9%      | 17448                    | 85.4%      |
| BSHC               | 8265                 | 1528                     | 18.5%      | 5916                     | 71.6%      |
| BSA Total          | 112925               | 19196                    | 17.0%      | 73867                    | 65.4%      |
| <i>60-64 years</i> |                      |                          |            |                          |            |
| BSAN               | 30050                | 4052                     | 13.5%      | 16260                    | 54.1%      |
| BSM                | 14595                | 2157                     | 14.8%      | 9177                     | 62.9%      |
| BSCtoC             | 12375                | 1949                     | 15.7%      | 7638                     | 61.7%      |
| BSC                | 9475                 | 1881                     | 19.9%      | 6198                     | 65.4%      |
| BSS                | 15925                | 4034                     | 25.3%      | 13036                    | 81.9%      |
| BSHC               | 6625                 | 1429                     | 21.6%      | 4927                     | 74.4%      |
| BSA Total          | 89045                | 15502                    | 17.4%      | 57236                    | 64.3%      |

**Comment:**

**1.a.4. Coverage of 50-54 year old eligible women**

The 6 monthly coverage (15.7%) is similar to the previous period, as is the biennial rate of 62.6% (compared with 61.7% for the previous period). There is some variation between lead providers with biennial rates ranging from 50.2% to 90.2%.

**1.a.5. Coverage of 55-59 year old eligible women**

The 6 monthly coverage (17.0%) has increased compared to the previous period, and this has resulted in a slight increase in the biennial rate (to 65.4% from 63.7%). There is some variation between lead providers with biennial rates ranging from 55.5% to 85.4%. However, denominators are the same as the previous report.

**1.a.6. Coverage of 60-64 year old eligible women**

The 6 monthly coverage (17.4%) has increased compared to the previous period, and this has resulted in a slight increase in the biennial rate (to 64.3% from 62.7%). There is some variation between lead providers.

### 1.a.7. Coverage by Ethnicity, Summary for last 2 years

**Table 1a.7** Coverage by Ethnicity, Summary for last 2 years

| Lead Provider      | Jul 2003 to Jun 2005           |               |                                |               |                                |               | Not Stated<br>(% of<br>Women<br>Screened) |
|--------------------|--------------------------------|---------------|--------------------------------|---------------|--------------------------------|---------------|---|
|                    | Maori                          |               | Pacific                        |               | Other                          |               |   |
|                    | Number of<br>Women<br>Screened | Coverage<br>% | Number of<br>Women<br>Screened | Coverage<br>% | Number of<br>Women<br>Screened | Coverage<br>% |   |
| <i>45-49 years</i> |                                |               |                                |               |                                |               |   |
| BSAN               | 162                            |               | 40                             |               | 1099                           |               | 4%  |
| BSM                | 190                            |               | 14                             |               | 1741                           |               | 0%  |
| BSCtoC             | 100                            |               | 2                              |               | 806                            |               | 1%  |
| BSC                | 44                             |               | 6                              |               | 444                            |               | 6%  |
| BSS                | 19                             |               | 0                              |               | 293                            |               | 2%  |
| BSHC               | 45                             |               | 6                              |               | 1396                           |               | 1%  |
| BSA Total          | 560                            |               | 68                             |               | 5779                           |               | 2%  |
| <i>50-64 years</i> |                                |               |                                |               |                                |               |   |
| BSAN               | 4915                           | 50.1%         | 3698                           | 43.5%         | 51361                          | 53.6%         | 1%  |
| BSM                | 2987                           | 39.0%         | 248                            | 47.2%         | 27651                          | 63.7%         | 0%  |
| BSCtoC             | 2218                           | 37.3%         | 142                            | 31.2%         | 24558                          | 65.0%         | 2%  |
| BSC                | 1194                           | 45.6%         | 603                            | 35.1%         | 21027                          | 67.1%         | 1%  |
| BSS                | 1555                           | 72.8%         | 276                            | 70.8%         | 48582                          | 86.3%         | 1%  |
| BSHC               | 507                            | 53.7%         | 57                             | 43.8%         | 16800                          | 73.7%         | 1%  |
| BSA Total          | 13376                          | 45.9%         | 5024                           | 42.9%         | 189979                         | 66.1%         | 1%  |
| <i>65-69 years</i> |                                |               |                                |               |                                |               |   |
| BSAN               | 417                            |               | 293                            |               | 5878                           |               | 1%  |
| BSM                | 331                            |               | 21                             |               | 5405                           |               | 0%  |
| BSCtoC             | 279                            |               | 8                              |               | 3827                           |               | 1%  |
| BSC                | 134                            |               | 58                             |               | 3320                           |               | 0%  |
| BSS                | 169                            |               | 29                             |               | 7904                           |               | 1%  |
| BSHC               | 30                             |               | 2                              |               | 2021                           |               | 1%  |
| BSA Total          | 1360                           |               | 411                            |               | 28355                          |               | 1%  |

**Comment:**

**Coverage by Ethnicity, Summary for last 2 years, 45-49 years**

Screening in this age group commenced in July 2004, and as such the number of screens represent a 12 month period not a biennium.

**Coverage by Ethnicity, Summary for last 2 years, 50-64 years**

The biennial rate for July 2003 to June 2005 remained similar to the previous period for each major ethnic group. Similar overall rates are evident for Maori and Pacific Islanders (approximately 46% and 43% respectively). Rates in the 'other' ethnic group were higher (66.1%) than Maori and Pacific Islander groups. There is a wide variation in rates by lead provider for Maori and Pacific Islander groups, presumably reflecting the differing ethnic characteristics of the catchment areas. There are very few women in the un-stated category.

**Coverage by Ethnicity, Summary for last 2 years, 65-69 years**

Screening in this age group commenced in July 2004, and as such the number of screens represent a 12 month period not a biennium.

### 1.a.8. Coverage of Maori women

**Table 1a.8** Coverage of Maori women

| Lead Provider      | Eligible Population* | Last 6 Months            |            | Last 2 Years             |            |
|--------------------|----------------------|--------------------------|------------|--------------------------|------------|
|                    |                      | Jan 2005 to Jun 2005     |            | Jul 2003 to Jun 2005     |            |
|                    |                      | Number of Women Screened | Coverage % | Number of Women Screened | Coverage % |
| <i>45-49 years</i> |                      |                          |            |                          |            |
| BSAN               | 5720                 | 152                      | 2.7%       | 162                      |            |
| BSM                | 4480                 | 178                      | 4.0%       | 190                      |            |
| BSCtoC             | 3330                 | 100                      | 3.0%       | 100                      |            |
| BSC                | 1555                 | 42                       | 2.7%       | 44                       |            |
| BSS                | 1250                 | 19                       | 1.5%       | 19                       |            |
| BSHC               | 530                  | 25                       | 4.7%       | 45                       |            |
| BSA Total          | 16865                | 516                      | 3.1%       | 560                      |            |
| <i>50-64 years</i> |                      |                          |            |                          |            |
| BSAN               | 9820                 | 1052                     | 10.7%      | 4915                     | 50.1%      |
| BSM                | 7660                 | 612                      | 8.0%       | 2987                     | 39.0%      |
| BSCtoC             | 5950                 | 618                      | 10.4%      | 2218                     | 37.3%      |
| BSC                | 2620                 | 308                      | 11.8%      | 1194                     | 45.6%      |
| BSS                | 2135                 | 440                      | 20.6%      | 1555                     | 72.8%      |
| BSHC               | 945                  | 120                      | 12.7%      | 507                      | 53.7%      |
| BSA Total          | 29130                | 3150                     | 10.8%      | 13376                    | 45.9%      |
| <i>65-69 years</i> |                      |                          |            |                          |            |
| BSAN               | 1820                 | 157                      | 8.6%       | 417                      |            |
| BSM                | 1460                 | 158                      | 10.8%      | 331                      |            |
| BSCtoC             | 1160                 | 146                      | 12.6%      | 279                      |            |
| BSC                | 395                  | 50                       | 12.7%      | 134                      |            |
| BSS                | 340                  | 89                       | 26.2%      | 169                      |            |
| BSHC               | 140                  | 14                       | 10.0%      | 30                       |            |
| BSA Total          | 5315                 | 614                      | 11.6%      | 1360                     |            |

Note: Eligible population is based on the 2004 projected population

#### Comment:

##### Coverage of Maori women, 45-49 years

Screening in this age group commenced in July 2004. The 6 month screening rate (3.1%) was approximately one third that of the 50-64 age-group and one quarter that of the oldest age-group. The biennial rate cannot be interpreted, as a 2 year period in this age group has not yet elapsed.

##### Coverage of Maori women, 50-64 years

Coverage of Maori women has increased slightly since the previous report, for both six monthly data (10.8%) and biennial rates (45.9%) with a variation between lead providers.

##### Coverage of Maori women, 65-69 years

Screening in this age group commenced in July 2004. The 6 month screening rate of 11.6% was slightly higher than the 6 month rate for the 50-64 year age group, and was similar to the previous 6 month period. The biennial rate cannot be interpreted, as a 2 year period in this age group has not yet elapsed.

### 1.a.9. Coverage of Pacific women

**Table 1a.9** Coverage of Pacific women

| Lead Provider      | Eligible Population* | Last 6 Months        |          | Last 2 Years         |          |
|--------------------|----------------------|----------------------|----------|----------------------|----------|
|                    |                      | Jan 2005 to Jun 2005 |          | Jul 2003 to Jun 2005 |          |
|                    |                      | Number of            | Coverage | Number of            | Coverage |
| <i>45-49 years</i> |                      |                      |          |                      |          |
| BSAN               | 4445                 | 37                   | 0.8%     | 40                   |          |
| BSM                | 325                  | 14                   | 4.3%     | 14                   |          |
| BSCtoC             | 265                  | 2                    | 0.8%     | 2                    |          |
| BSC                | 875                  | 6                    | 0.7%     | 6                    |          |
| BSS                | 240                  | 0                    | 0.0%     | 0                    |          |
| BSHC               | 70                   | 3                    | 4.3%     | 6                    |          |
| BSA Total          | 6220                 | 62                   | 1.0%     | 68                   |          |
| <i>50-64 years</i> |                      |                      |          |                      |          |
| BSAN               | 8500                 | 708                  | 8.3%     | 3698                 | 43.5%    |
| BSM                | 525                  | 36                   | 6.9%     | 248                  | 47.2%    |
| BSCtoC             | 455                  | 27                   | 5.9%     | 142                  | 31.2%    |
| BSC                | 1720                 | 117                  | 6.8%     | 603                  | 35.1%    |
| BSS                | 390                  | 81                   | 20.8%    | 276                  | 70.8%    |
| BSHC               | 130                  | 15                   | 11.5%    | 57                   | 43.8%    |
| BSA Total          | 11720                | 984                  | 8.4%     | 5024                 | 42.9%    |
| <i>65-69 years</i> |                      |                      |          |                      |          |
| BSAN               | 1665                 | 116                  | 7.0%     | 293                  |          |
| BSM                | 125                  | 10                   | 8.0%     | 21                   |          |
| BSCtoC             | 85                   | 3                    | 3.5%     | 8                    |          |
| BSC                | 310                  | 20                   | 6.5%     | 58                   |          |
| BSS                | 60                   | 15                   | 25.0%    | 29                   |          |
| BSHC               | 15                   | 0                    | 0.0%     | 2                    |          |
| BSA Total          | 2260                 | 164                  | 7.3%     | 411                  |          |

**Comment:**

**Coverage of Pacific women, 45-49 years**

Screening in this age group commenced in July 2004. The BSA 6 month rate was low (1.0%) compared with older age-groups, and only very small numbers were screened in some lead providers. The biennial rate cannot be interpreted, as a 2 year period in this age group has not yet elapsed.

**Coverage of Pacific women, 50-64 years**

Coverage of Pacific Island women decreased slightly over the six month period (8.4% overall) compared to the previous report (11.9%) and biennial rates did not change substantially.

**Coverage of Pacific women, 65-69 years**

Screening in this age group commenced in July 2004. The BSA 6 month rate of 7.3% was of a similar magnitude to the 50-64 year age group (8.4%), however there was large variation between lead providers with rates ranging from 0% to 25%. The biennial rate cannot be interpreted, as a 2 year period in this age group has not yet elapsed.

### 1.a.10. Coverage of Other women

**Table 1a.10** Coverage of Other women

| Lead Provider      | Eligible Population* | Last 6 Months            |            | Last 2 Years             |            |
|--------------------|----------------------|--------------------------|------------|--------------------------|------------|
|                    |                      | Jan 2005 to Jun 2005     |            | Jul 2003 to Jun 2005     |            |
|                    |                      | Number of Women Screened | Coverage % | Number of Women Screened | Coverage % |
| <i>45-49 years</i> |                      |                          |            |                          |            |
| BSAN               | 41980                | 1058                     | 2.5%       | 1099                     |            |
| BSM                | 17600                | 1647                     | 9.4%       | 1741                     |            |
| BSCtoC             | 15480                | 802                      | 5.2%       | 806                      |            |
| BSC                | 13320                | 405                      | 3.0%       | 444                      |            |
| BSS                | 23500                | 291                      | 1.2%       | 293                      |            |
| BSHC               | 9760                 | 995                      | 10.2%      | 1396                     |            |
| BSA Total          | 121640               | 5198                     | 4.3%       | 5779                     |            |
| <i>50-64 years</i> |                      |                          |            |                          |            |
| BSAN               | 95890                | 11949                    | 12.5%      | 51361                    | 53.6%      |
| BSM                | 43390                | 6722                     | 15.5%      | 27651                    | 63.7%      |
| BSCtoC             | 37770                | 5995                     | 15.9%      | 24558                    | 65.0%      |
| BSC                | 31320                | 5984                     | 19.1%      | 21027                    | 67.1%      |
| BSS                | 56270                | 14527                    | 25.8%      | 48582                    | 86.3%      |
| BSHC               | 22790                | 4557                     | 20.0%      | 16800                    | 73.7%      |
| BSA Total          | 287430               | 49734                    | 17.3%      | 189979                   | 66.1%      |
| <i>65-69 years</i> |                      |                          |            |                          |            |
| BSAN               | 19880                | 2258                     | 11.4%      | 5878                     |            |
| BSM                | 10350                | 2237                     | 21.6%      | 5405                     |            |
| BSCtoC             | 9090                 | 1399                     | 15.4%      | 3827                     |            |
| BSC                | 6740                 | 1402                     | 20.8%      | 3320                     |            |
| BSS                | 12580                | 4555                     | 36.2%      | 7904                     |            |
| BSHC               | 5470                 | 1123                     | 20.5%      | 2021                     |            |
| BSA Total          | 64110                | 12974                    | 20.2%      | 28355                    |            |

**Comment:**

**1.a.10. Coverage of Other women, 45-49 years**

Screening in this age group commenced in July 2004. The BSA 6 month rate was low (4.3%) compared with older age-groups, with variation across lead providers. The biennial rate cannot be interpreted, as a 2 year period in this age group has not yet elapsed.

**1.a.10. Coverage of Other women, 50-64 years**

Coverage of women from ethnic groups other than Maori or Pacific Islander (17.3%) was slightly higher than the rate for the previous the six month period (15.1% overall) compared to the previous report, and biennial rates did not change substantially.

**1.a.10. Coverage of Other women, 65-69 years**

Screening in this age group commenced in July 2004. The BSA 6 month rate of 20.2% was greater than the 50-64 year age group (17.3%). There was variation between lead providers with rates ranging from 11.4% to 36.2%. The biennial rate cannot be interpreted, as a 2 year period in this age group has not yet elapsed.

### 1.b. Routine re-screening

*Description:* The proportion of enrolled eligible women who are re-screened, this measures the acceptability of the programme

*Target:*

- > 85% of women who are eligible for rescreen are re-screened, within 27 months
- > 75% of women who return for a screen are re-screened between 20 to 24 months of their previous screen

**Table 1b.1** Percentage of women eligible for rescreen who are re-screened, within 27 months

| Lead Provider | Last 6 Months                      |                             |                                 | Last 2 Years                       |                             |                                 |
|---------------|------------------------------------|-----------------------------|---------------------------------|------------------------------------|-----------------------------|---------------------------------|
|               | Jan 2005 to Jun 2005               |                             |                                 | Jul 2003 to Jun 2005               |                             |                                 |
|               | Women re-screened within 27 months | Women eligible for rescreen | Proportion of women re-screened | Women re-screened within 27 months | Women eligible for rescreen | Proportion of women re-screened |
| BSAN          | 9773                               | 11809                       | 82.8%                           | 46908                              | 66462                       | 70.6%                           |
| BSM           | 4668                               | 6030                        | 77.4%                           | 21008                              | 32356                       | 64.9%                           |
| BSCtoC        | 3652                               | 4380                        | 83.4%                           | 20158                              | 28520                       | 70.7%                           |
| BSC           | 3209                               | 3854                        | 83.3%                           | 16463                              | 24251                       | 67.9%                           |
| BSS           | 8493                               | 9409                        | 90.3%                           | 37910                              | 53006                       | 71.5%                           |
| BSHC          | 2886                               | 3351                        | 86.1%                           | 12815                              | 17432                       | 73.5%                           |
| BSA Total     | 32681                              | 38833                       | 84.2%                           | 155262                             | 222027                      | 69.9%                           |

**Table 1b.2** Percentage of women who return for a screen who are re-screened within 20-24 months

| Lead Provider | Last 6 Months  |                                    |   | Last 2 Years   |                                    |   |
|---------------|--|------------------------------------|---|--|------------------------------------|---|
|               | Jan 2005 to Jun 2005                                       |                                    |   | Jul 2003 to Jun 2005                                       |                                    |   |
|               | Number of rescreens within 20-24 months of previous screen | Women re-screened within 27 months | Proportion of women re-screened within 20-24 months | Number of rescreens within 20-24 months of previous screen | Women re-screened within 27 months | Proportion of women re-screened within 20-24 months |
| BSAN          | 7742   | 9773                               | 79.2%   | 39365  | 46908                              | 83.9%   |
| BSM           | 3898   | 4668                               | 83.5%   | 16498  | 21008                              | 78.5%   |
| BSCtoC        | 2370   | 3652                               | 64.9%   | 12790  | 20158                              | 63.4%   |
| BSC           | 2603   | 3209                               | 81.1%   | 14080  | 16463                              | 85.5%   |
| BSS           | 7670   | 8493                               | 90.3%   | 33989  | 37910                              | 89.7%   |
| BSHC          | 2427   | 2886                               | 84.1%   | 9273   | 12815                              | 72.4%   |
| BSA Total     | 26710  | 32681                              | 81.7%   | 125995   | 155262                             | 81.1%   |

#### Comment:

Women aged 45-49 years and 65-69 years commenced screening in July, 2004, and are not yet eligible for to return for a re-screen. Re-screen data is present for the 50-64 year age group only.

#### 1.b.1. Re-screened within 27 months

The BSA rate for the six months was 84.2% which was very close to the target of 85% and similar to the previous 6 month period; although the 2 year data show lower rates presumably because of lower re-screen rates in the early part of this period. This is a very commendable result, with no lead providers more than 7 percentage points below target.

#### 1.b.2. Re-screened 20-24 months

Both six monthly and 2 yearly data show that the target of 75% is being met over all. All lead providers reached the target for the 6 month period, with the exception of BSCtoC.

## 2. PROVISION OF HIGH QUALITY SCREENING AND ASSESSMENT

### 2.a. Screened women who have no more than four films taken

*Description:*

The percentage of women who have no more than four films taken

*Target:*

> 80% of women screened have four films taken or fewer.

#### 2.a.1. Percentage of women having 4 films or less by Lead Provider, last 6 months

**Table 2a.1** Percentage of women having 4 films or fewer by Lead Provider, last 6 months

| Lead Provider      | Jan 2005 to Jun 2005 |           |            |        |           |            |
|--------------------|----------------------|-----------|------------|--------|-----------|------------|
|                    | Fixed                |           |            | Mobile |           |            |
|                    | Women                | Number of | % of Women | Women  | Number of | % of Women |
| <b>45-49 years</b> |                      |           |            |        |           |            |
| BSAN               | 734                  | 901       | 81.5%      | 313    | 396       | 79.0%      |
| BSM                | 1222                 | 1354      | 90.3%      | 417    | 488       | 85.5%      |
| BSCtoC             | 478                  | 560       | 85.4%      | 305    | 349       | 87.4%      |
| BSC                | 299                  | 331       | 90.3%      | 140    | 148       | 94.6%      |
| BSS                | 17                   | 20        | 85.0%      | 268    | 295       | 90.8%      |
| BSHC               | 600                  | 684       | 87.7%      | 337    | 349       | 96.6%      |
| BSA Total          | 3350                 | 3850      | 87.0%      | 1780   | 2025      | 87.9%      |
| <b>50-64 years</b> |                      |           |            |        |           |            |
| BSAN               | 9008                 | 11096     | 81.2%      | 2151   | 2879      | 74.7%      |
| BSM                | 4674                 | 5245      | 89.1%      | 1761   | 2132      | 82.6%      |
| BSCtoC             | 5246                 | 5828      | 90.0%      | 753    | 946       | 79.6%      |
| BSC                | 4044                 | 4648      | 87.0%      | 1720   | 1879      | 91.5%      |
| BSS                | 12066                | 13950     | 86.5%      | 1028   | 1170      | 87.9%      |
| BSHC               | 2964                 | 3435      | 86.3%      | 1193   | 1303      | 91.6%      |
| BSA Total          | 38002                | 44202     | 86.0%      | 8606   | 10309     | 83.5%      |
| <b>65-69 years</b> |                      |           |            |        |           |            |
| BSAN               | 1694                 | 2094      | 80.9%      | 348    | 481       | 72.3%      |
| BSM                | 1538                 | 1709      | 90.0%      | 577    | 696       | 82.9%      |
| BSCtoC             | 1161                 | 1303      | 89.1%      | 209    | 267       | 78.3%      |
| BSC                | 885                  | 1036      | 85.4%      | 391    | 442       | 88.5%      |
| BSS                | 3794                 | 4435      | 85.5%      | 208    | 250       | 83.2%      |
| BSHC               | 723                  | 846       | 85.5%      | 280    | 307       | 91.2%      |
| BSA Total          | 9795                 | 11423     | 85.7%      | 2013   | 2443      | 82.4%      |

**Comment:**

#### **Percentage of women (45-49 years) having 4 films or less by Lead Provider, last 6 months**

The BSA program percentage and all lead providers reached the target of 80% for fixed sites. Similarly, for mobile sites the BSA program percentage of 87.9% was above the target, with only one lead provider marginally (<5 percentage points) below.

#### **Percentage of women (50-64 years) having 4 films or less by Lead Provider, last 6 months**

The BSA program percentage and all lead providers reached the target of 80% for fixed sites. Similarly for mobile sites, the BSA program percentage of 83.5% was above the target, with only two lead provider marginally (<5 percentage points) below.

#### **Percentage of women (65-69 years) having 4 films or less by Lead Provider, last 6 months**

The BSA program percentage and all lead providers reached the target of 80% for fixed sites. Similarly for mobile sites, the BSA program percentage of 82.4% was above the target, with only two lead provider marginally (<5 percentage points) below.

*Description:*

The percentage of women who have no more than four films taken

*Target:*

> 80% of women screened have four films taken or fewer.

**2.a.2. Percentage of women having 4 films or less by Lead Provider, last 2 years**

**Table 2a.2** Percentage of women having 4 films or less by Lead Provider, last 2 years

| Lead Provider      | Jul 2003 to Jun 2005          |                          |                     |                               |                          |                     |
|--------------------|-------------------------------|--------------------------|---------------------|-------------------------------|--------------------------|---------------------|
|                    | Fixed                         |                          |                     | Mobile                        |                          |                     |
|                    | Women having 4 films or fewer | Number of Women Screened | % of Women Screened | Women having 4 films or fewer | Number of Women Screened | % of Women Screened |
| <b>45-49 years</b> |                               |                          |                     |                               |                          |                     |
| BSAN               | 741                           | 911                      |                     | 349                           | 441                      |                     |
| BSM                | 1224                          | 1356                     |                     | 509                           | 592                      |                     |
| BSCtoC             | 482                           | 564                      |                     | 305                           | 349                      |                     |
| BSC                | 315                           | 349                      |                     | 164                           | 174                      |                     |
| BSS                | 19                            | 22                       |                     | 268                           | 295                      |                     |
| BSHC               | 827                           | 935                      |                     | 506                           | 528                      |                     |
| BSA Total          | 3608                          | 4137                     |                     | 2101                          | 2379                     |                     |
| <b>50-64 years</b> |                               |                          |                     |                               |                          |                     |
| BSAN               | 41238                         | 50679                    | 81.4%               | 7525                          | 9942                     | 75.7%               |
| BSM                | 20645                         | 23068                    | 89.5%               | 6427                          | 7843                     | 81.9%               |
| BSCtoC             | 19498                         | 22112                    | 88.2%               | 4272                          | 5308                     | 80.5%               |
| BSC                | 12929                         | 15807                    | 81.8%               | 6047                          | 7187                     | 84.1%               |
| BSS                | 38355                         | 44888                    | 85.4%               | 5095                          | 5826                     | 87.5%               |
| BSHC               | 10228                         | 12003                    | 85.2%               | 5081                          | 5519                     | 92.1%               |
| BSA Total          | 142893                        | 168557                   | 84.8%               | 34447                         | 41625                    | 82.8%               |
| <b>65-69 years</b> |                               |                          |                     |                               |                          |                     |
| BSAN               | 4288                          | 5395                     |                     | 936                           | 1260                     |                     |
| BSM                | 3988                          | 4444                     |                     | 1092                          | 1316                     |                     |
| BSCtoC             | 3088                          | 3522                     |                     | 525                           | 640                      |                     |
| BSC                | 2172                          | 2530                     |                     | 865                           | 994                      |                     |
| BSS                | 6210                          | 7350                     |                     | 657                           | 798                      |                     |
| BSHC               | 1188                          | 1407                     |                     | 603                           | 673                      |                     |
| BSA Total          | 20934                         | 24648                    |                     | 4678                          | 5681                     |                     |

Note: Data for women aged 45-49 and 65-69 years represent 12 month period only.

**Comment:**

**Percentage of women (45-49 years) having 4 films or less by Lead Provider, last 2 years**

Screening in this age group commenced in July, 2004, therefore these data represent a 12 month period. A 2 year period has not yet elapsed for this indicator to be interpreted appropriately.

**Percentage of women (50-64 years) having 4 films or less by Lead Provider, last 2 years**

The BSA program percentage reached the target of 80% for fixed sites and mobile sites. There was little variability across lead providers, although one lead provider was slightly below the target.

**Percentage of women (65-69 years) having 4 films or less by Lead Provider, last 2 years**

Screening in this age group commenced in July, 2004, therefore these data represent a 12 month period. A 2 year period has not yet elapsed for this indicator to be interpreted appropriately.

## 2.b. Technical Recall Rate

*Description:* The number of women who have to return to a screening unit (either Fixed or Mobile) for further films to complete their screening episode, expressed as a percentage of the number screened.

*Target:*

Fixed: <0.5%

Mobile: <3%

### 2.b.1. Women having technical recall as a percentage of Women screened, last 6 Months

**Table 2b.1** Women having technical recall as a percentage of Women screened, last 6 Months

| Lead Provider      | Jan 2005 to Jun 2005          |                          |                     |                               |                          |                     |
|--------------------|-------------------------------|--------------------------|---------------------|-------------------------------|--------------------------|---------------------|
|                    | Fixed                         |                          |                     | Mobile                        |                          |                     |
|                    | Women having Technical Recall | Number of Women Screened | % of Women Screened | Women having Technical Recall | Number of Women Screened | % of Women Screened |
| <b>45-49 years</b> |                               |                          |                     |                               |                          |                     |
| BSAN               | 26                            | 901                      | 2.89% (1.89-4.23)   | 34                            | 396                      | 8.6% (5.9-12.0)     |
| BSM                | 3                             | 1354                     | 0.22% (0.05-0.65)   | 18                            | 488                      | 3.7% (2.2-5.8)      |
| BSCtoC             | 1                             | 560                      | 0.18% (0.0-0.99)    | 7                             | 349                      | 2.0% (0.8-4.1)      |
| BSC                | 2                             | 331                      | 0.60% (0.07-2.18)   | 7                             | 148                      | 4.7% (1.9-9.7)      |
| BSS                | 2                             | 20                       | 10.0% (1.21-36.12)  | 10                            | 295                      | 3.4% (1.6-6.2)      |
| BSHC               | 2                             | 684                      | 0.29% (0.04-1.06)   | 5                             | 349                      | 1.4% (0.5-3.3)      |
| BSA Total          | 36                            | 3850                     | 0.94% (0.65-1.29)   | 81                            | 2025                     | 4.0% (3.2-5.0)      |
| <b>50-64 years</b> |                               |                          |                     |                               |                          |                     |
| BSAN               | 45                            | 11096                    | 0.41% (0.30-0.54)   | 185                           | 2879                     | 6.4% (5.5-7.4)      |
| BSM                | 4                             | 5245                     | 0.08% (0.02-0.20)   | 98                            | 2132                     | 4.6% (3.7-5.6)      |
| BSCtoC             | 2                             | 5828                     | 0.03% (0.0-0.12)    | 33                            | 946                      | 3.5% (2.4-4.9)      |
| BSC                | 15                            | 4648                     | 0.32% (0.18-0.53)   | 62                            | 1879                     | 3.3% (2.5-4.2)      |
| BSS                | 34                            | 13950                    | 0.24% (0.17-0.34)   | 27                            | 1170                     | 2.3% (1.5-3.4)      |
| BSHC               | 6                             | 3435                     | 0.17% (0.06-0.38)   | 22                            | 1303                     | 1.7% (1.1-2.6)      |
| BSA Total          | 106                           | 44202                    | 0.24% (0.20-0.29)   | 427                           | 10309                    | 4.1% (3.8-4.6)      |
| <b>65-69 years</b> |                               |                          |                     |                               |                          |                     |
| BSAN               | 26                            | 2094                     | 1.24% (0.81-1.82)   | 35                            | 481                      | 7.3% (5.1-10.1)     |
| BSM                | 0                             | 1709                     | 0.0% (0.0-0.22)     | 18                            | 696                      | 2.6% (1.5-4.1)      |
| BSCtoC             | 2                             | 1303                     | 0.15% (0.02-0.55)   | 12                            | 267                      | 4.5% (2.3-7.9)      |
| BSC                | 5                             | 1036                     | 0.48% (0.16-1.13)   | 12                            | 442                      | 2.7% (1.4-4.7)      |
| BSS                | 12                            | 4435                     | 0.27% (0.14-0.47)   | 7                             | 250                      | 2.8% (1.1-5.8)      |
| BSHC               | 1                             | 846                      | 0.12% (0.0-0.66)    | 9                             | 307                      | 2.9% (1.3-5.6)      |
| BSA Total          | 46                            | 11423                    | 0.40% (0.29-0.54)   | 93                            | 2443                     | 3.8% (3.1-4.7)      |

Poisson 95% Confidence Intervals presented

#### Comment:

#### Women having technical recall as a percentage of Women screened, last 6 Months, women aged 45-49 years

The BSA program percentage (0.9%) was statistically higher than the target of 0.5% for fixed sites. Some of the smaller lead providers were over the target, however these percentages should not be over-interpreted given the small numbers of recalls and women screened. The BSA program percentage for mobile sites (4.0%) was statistically higher than the target of <3%, with percentages across lead providers ranging from 1.4% to 8.6% although confidence intervals contained the target value in some cases.

#### Women having technical recall as a percentage of Women screened, last 6 Months, women aged 50-64 years

The BSA program percentage, and all lead providers reached target of <0.5% for fixed sites, but for mobile sites the BSA program percentage was statistically higher than the target of <3% at 4.1%, with some lead providers over 4%. These results are similar to the previous period. 95% confidence intervals indicate that some of the differences between lead providers are significant.

#### Women having technical recall as a percentage of Women screened, last 6 Months, women aged 65-69 years

The BSA program percentage, and all lead providers reached target of <0.5% for fixed sites, but for mobile sites the BSA program percentage was statistically higher than the target of <3% at 4.0%. Two of the six lead providers had percentages over 4%. These results are similar to the previous period. 95% confidence intervals indicate that some of the differences between lead providers are significant.

*Description:* The number of women who have to return to a screening unit (either Fixed or Mobile) for further films to complete their screening episode, expressed as a percentage of the number screened.

*Target:*

Fixed: <0.5%

Mobile: <3%

## 2.b.2. Women having technical recall as a percentage of Women screened, last 2 years

**Table 2b.2** Women having technical recall as a percentage of Women screened, last 2 years

| Lead Provider      | Jul 2003 to Jun 2005          |                          |                     |                               |                          |                     |
|--------------------|-------------------------------|--------------------------|---------------------|-------------------------------|--------------------------|---------------------|
|                    | Fixed                         |                          |                     | Mobile                        |                          |                     |
|                    | Women having Technical Recall | Number of Women Screened | % of Women Screened | Women having Technical Recall | Number of Women Screened | % of Women Screened |
| <i>45-49 years</i> |                               |                          |                     |                               |                          |                     |
| BSAN               | 48                            | 911                      |                     | 40                            | 441                      |                     |
| BSM                | 3                             | 1356                     |                     | 20                            | 592                      |                     |
| BSCtoC             | 1                             | 564                      |                     | 10                            | 349                      |                     |
| BSC                | 3                             | 349                      |                     | 10                            | 174                      |                     |
| BSS                | 3                             | 22                       |                     | 10                            | 295                      |                     |
| BSHC               | 5                             | 935                      |                     | 8                             | 528                      |                     |
| BSA Total          | 63                            | 4137                     |                     | 98                            | 2379                     |                     |
| <i>50-64 years</i> |                               |                          |                     |                               |                          |                     |
| BSAN               | 135                           | 50679                    | 0.27% (0.22-0.32)   | 533                           | 9942                     | 5.4% (4.9-5.8)      |
| BSM                | 32                            | 23068                    | 0.14% (0.09-0.20)   | 299                           | 7843                     | 3.8% (3.4-4.3)      |
| BSCtoC             | 18                            | 22112                    | 0.08% (0.05-0.13)   | 235                           | 5308                     | 4.4% (3.9-5.0)      |
| BSC                | 65                            | 15807                    | 0.41% (0.32-0.52)   | 203                           | 7187                     | 2.8% (2.4-3.2)      |
| BSS                | 147                           | 44888                    | 0.33% (0.28-0.38)   | 127                           | 5826                     | 2.2% (1.8-2.6)      |
| BSHC               | 27                            | 12003                    | 0.22% (0.15-0.33)   | 132                           | 5519                     | 2.4% (2.0-2.8)      |
| BSA Total          | 424                           | 168557                   | 0.25% (0.23-0.28)   | 1529                          | 41625                    | 3.7% (3.5-3.9)      |
| <i>65-69 years</i> |                               |                          |                     |                               |                          |                     |
| BSAN               | 55                            | 5395                     |                     | 71                            | 1260                     |                     |
| BSM                | 11                            | 4444                     |                     | 49                            | 1316                     |                     |
| BSCtoC             | 6                             | 3522                     |                     | 31                            | 640                      |                     |
| BSC                | 9                             | 2530                     |                     | 39                            | 994                      |                     |
| BSS                | 25                            | 7350                     |                     | 22                            | 798                      |                     |
| BSHC               | 3                             | 1407                     |                     | 19                            | 673                      |                     |
| BSA Total          | 109                           | 24648                    |                     | 231                           | 5681                     |                     |

Poisson 95% Confidence Intervals presented

Note: Data for women aged 45-49 and 65-69 years represent 12 month period only.

### Comment:

#### Women having technical recall as a percentage of women screened, last 2 years, 45-49 years

Screening in this age group commenced in July, 2004. These data represent a 12 month period. A 2 year period has not yet elapsed for this indicator to be interpreted appropriately.

#### Women having technical recall as a percentage of women screened, last 2 years, 50-64 years

The BSA program percentage, and all lead providers (but one) reached the target of <0.5% for fixed sites, but for mobile sites the BSA program percentage was over target of <3% at 3.7%, with 2 lead providers over 4%. Overall results are similar to the previous period.

#### Women having technical recall as a percentage of women screened, last 2 years, 65-69 years

Screening in this age group commenced in July, 2004. These data represent a 12 month period. A 2 year period has not yet elapsed for this indicator to be interpreted appropriately.

## 2.c. Technical reject rate

*Description:* The number of films rejected as a percentage of the number of films taken, calculated separately for women who are screened in a fixed unit and a mobile unit.

*Target:*

Fixed: <3%

Mobile: <3%

### 2.c.1. Rejected films as a percentage of total films taken, last 6 Months

**Table 2c.1** Rejected films as a percentage of total films taken, last 6 Months

| Lead Provider      | Jan 2005 to Jun 2005 |             |            |             |             |            |
|--------------------|----------------------|-------------|------------|-------------|-------------|------------|
|                    | Fixed                |             |            | Mobile      |             |            |
|                    | Total Films          | Total Films | % of Total | Total Films | Total Films | % of Total |
| <i>45-49 years</i> |                      |             |            |             |             |            |
| BSAN               | 47                   | 3862        | 1.2%       | 21          | 1726        | 1.2%       |
| BSM                | 38                   | 5664        | 0.7%       | 5           | 2063        | 0.2%       |
| BSCtoC             | 22                   | 2365        | 0.9%       | 11          | 1473        | 0.7%       |
| BSC                | 10                   | 1373        | 0.7%       | 0           | 608         | 0.0%       |
| BSS                | 3                    | 84          | 3.6%       | 10          | 1221        | 0.8%       |
| BSHC               | 39                   | 2887        | 1.4%       | 1           | 1416        | 0.1%       |
| BSA Total          | 159                  | 16235       | 1.0%       | 48          | 8507        | 0.6%       |
| <i>50-64 years</i> |                      |             |            |             |             |            |
| BSAN               | 712                  | 47558       | 1.5%       | 169         | 12718       | 1.3%       |
| BSM                | 164                  | 22051       | 0.7%       | 46          | 9146        | 0.5%       |
| BSCtoC             | 171                  | 24199       | 0.7%       | 40          | 4124        | 1.0%       |
| BSC                | 164                  | 19575       | 0.8%       | 0           | 7765        | 0.0%       |
| BSS                | 756                  | 58692       | 1.3%       | 34          | 5019        | 0.7%       |
| BSHC               | 183                  | 14497       | 1.3%       | 17          | 5382        | 0.3%       |
| BSA Total          | 2150                 | 186572      | 1.2%       | 306         | 44154       | 0.7%       |
| <i>65-69 years</i> |                      |             |            |             |             |            |
| BSAN               | 145                  | 8909        | 1.6%       | 30          | 2139        | 1.4%       |
| BSM                | 48                   | 7115        | 0.7%       | 12          | 2988        | 0.4%       |
| BSCtoC             | 41                   | 5379        | 0.8%       | 12          | 1168        | 1.0%       |
| BSC                | 35                   | 4350        | 0.8%       | 0           | 1837        | 0.0%       |
| BSS                | 185                  | 18692       | 1.0%       | 7           | 1069        | 0.7%       |
| BSHC               | 44                   | 3574        | 1.2%       | 12          | 1276        | 0.9%       |
| BSA Total          | 498                  | 48019       | 1.0%       | 73          | 10477       | 0.7%       |

#### Comment:

#### Rejected films as a percentage of total films taken, last 6 Months, women aged 45-49 years

The BSA program percentage reached the target of <3% for fixed and mobile sites. For fixed mobile sites, one lead provider was slightly above the target, however only a small number of total films were taken.

#### Rejected films as a percentage of total films taken, last 6 Months, women aged 50-64 years

The BSA program percentage, and all lead providers reached the target of <3% for fixed and mobile sites. These results are similar to the previous period.

#### Rejected films as a percentage of total films taken, last 6 Months, women aged 65-69 years

The BSA program percentage, and all lead providers, reached the target of <3% for fixed and mobile sites.

*Description:* The number of films rejected as a percentage of the number of films taken, calculated separately for women who are screened in a fixed unit and a mobile unit.

*Target:*

Fixed: <3%

Mobile: <3%

## 2.c.2. Rejected films as a percentage of total films taken, last 2 Years

**Table 2c.2** Rejected films as a percentage of total films taken, last 2 Years

| Lead Provider      | Jul 2003 to Jun 2005 |                   |                  |                      |                   |                  |
|--------------------|----------------------|-------------------|------------------|----------------------|-------------------|------------------|
|                    | Fixed                |                   |                  | Mobile               |                   |                  |
|                    | Total Films Rejected | Total Films Taken | % of Total Films | Total Films Rejected | Total Films Taken | % of Total Films |
| <i>45-49 years</i> |                      |                   |                  |                      |                   |                  |
| BSAN               | 47                   | 3907              |                  | 26                   | 1920              |                  |
| BSM                | 38                   | 5672              |                  | 7                    | 2498              |                  |
| BSCtoC             | 22                   | 2381              |                  | 11                   | 1473              |                  |
| BSC                | 11                   | 1448              |                  | 0                    | 715               |                  |
| BSS                | 3                    | 92                |                  | 10                   | 1221              |                  |
| BSHC               | 47                   | 3924              |                  | 2                    | 2150              |                  |
| BSA Total          | 168                  | 17424             |                  | 56                   | 9977              |                  |
| <i>50-64 years</i> |                      |                   |                  |                      |                   |                  |
| BSAN               | 2573                 | 217658            | 1.2%             | 411                  | 43699             | 0.9%             |
| BSM                | 697                  | 96554             | 0.7%             | 228                  | 33738             | 0.7%             |
| BSCtoC             | 936                  | 92223             | 1.0%             | 296                  | 22978             | 1.3%             |
| BSC                | 725                  | 67570             | 1.1%             | 10                   | 30530             | 0.0%             |
| BSS                | 2557                 | 189342            | 1.4%             | 172                  | 24711             | 0.7%             |
| BSHC               | 637                  | 50940             | 1.3%             | 45                   | 22804             | 0.2%             |
| BSA Total          | 8125                 | 714287            | 1.1%             | 1162                 | 178460            | 0.7%             |
| <i>65-69 years</i> |                      |                   |                  |                      |                   |                  |
| BSAN               | 307                  | 23208             |                  | 59                   | 5566              |                  |
| BSM                | 116                  | 18504             |                  | 31                   | 5625              |                  |
| BSCtoC             | 119                  | 14667             |                  | 37                   | 2757              |                  |
| BSC                | 89                   | 10617             |                  | 1                    | 4176              |                  |
| BSS                | 350                  | 30981             |                  | 28                   | 3441              |                  |
| BSHC               | 66                   | 5967              |                  | 15                   | 2820              |                  |
| BSA Total          | 1047                 | 103944            |                  | 171                  | 24385             |                  |

Note: Data for women aged 45-49 and 65-69 years represent 12 month period only.

### Comment:

#### 2.c.2. Rejected films as a percentage of total films taken, last 2 Years, women aged 45-49 years

Screening in this age group commenced in July, 2004. The data represent a 12 month period, and cannot be interpreted as a biennial rate.

#### 2.c.2. Rejected films as a percentage of total films taken, last 2 Years, women aged 50-64 years

The BSA program percentage, and all lead providers reached the target of <3% for fixed and mobile sites. These results are similar to the previous period.

#### 2.c.2. Rejected films as a percentage of total films taken, last 2 Years, women aged 65-69 years

Screening in this age group commenced in July, 2004. The data represent a 12 month period, and cannot be interpreted as a biennial rate.

## 2.d. Assessment rate

### Description:

Number of women referred to assessment as a percentage of all women screened

### Target:

Initial (Prevalent) screen: expected value <10% and the desired value is <7%

Subsequent (Incident) screen: expected value <5% and the desired value is <4%

### 2.d.1. Referral to Assessment as a percentage of Women screened, last 6 Months

**Table 2d.1** Referral to Assessment as a percentage of Women screened, last 6 Months

| Lead Provider      | Jan 2005 to Jun 2005   |                          |                     |                        |                          |                     |
|--------------------|------------------------|--------------------------|---------------------|------------------------|--------------------------|---------------------|
|                    | Initial (Prevalent)    |                          |                     | Subsequent (Incident)  |                          |                     |
|                    | Referral to Assessment | Number of Women Screened | % of Women Screened | Referral to Assessment | Number of Women Screened | % of Women Screened |
| <i>45-49 years</i> |                        |                          |                     |                        |                          |                     |
| BSAN               | 103                    | 1297                     | 7.9% (6.5-9.6)      | 0                      | 0                        |                     |
| BSM                | 167                    | 1842                     | 9.1% (7.7-10.6)     | 0                      | 0                        |                     |
| BSCtoC             | 62                     | 908                      | 6.8% (5.2-8.8)      | 1                      | 1                        |                     |
| BSC                | 49                     | 477                      | 10.3% (7.6-13.6)    | 0                      | 2                        |                     |
| BSS                | 34                     | 315                      | 10.8% (7.5-15.1)    | 0                      | 0                        |                     |
| BSHC               | 90                     | 1030                     | 8.7% (7.0-10.7)     | 0                      | 3                        |                     |
| BSA Total          | 505                    | 5869                     | 8.6% (7.9-9.4)      | 1                      | 6                        |                     |
| <i>50-64 years</i> |                        |                          |                     |                        |                          |                     |
| BSAN               | 192                    | 2855                     | 6.7% (5.8-7.7)      | 344                    | 11120                    | 3.1% (2.8-3.4)      |
| BSM                | 136                    | 1582                     | 8.6% (7.2-10.2)     | 240                    | 5795                     | 4.1% (3.6-4.7)      |
| BSCtoC             | 117                    | 1360                     | 8.6% (7.1-10.3)     | 181                    | 5414                     | 3.3% (2.9-3.9)      |
| BSC                | 176                    | 1731                     | 10.2% (8.7-11.8)    | 189                    | 4796                     | 3.9% (3.4-4.5)      |
| BSS                | 275                    | 2615                     | 10.5% (9.3-11.8)    | 445                    | 12505                    | 3.6% (3.2-3.9)      |
| BSHC               | 62                     | 787                      | 7.9% (6.0-10.1)     | 59                     | 3951                     | 1.5% (1.1-1.9)      |
| BSA Total          | 958                    | 10930                    | 8.8% (8.2-9.3)      | 1458                   | 43581                    | 3.3% (3.2-3.5)      |
| <i>65-69 years</i> |                        |                          |                     |                        |                          |                     |
| BSAN               | 16                     | 355                      | 4.5% (2.6-7.3)      | 80                     | 2220                     | 3.6% (2.9-4.5)      |
| BSM                | 7                      | 153                      | 4.6% (1.8-9.4)      | 109                    | 2252                     | 4.8% (4.0-5.8)      |
| BSCtoC             | 9                      | 118                      | 7.6% (3.5-14.5)     | 36                     | 1452                     | 2.5% (1.7-3.4)      |
| BSC                | 16                     | 160                      | 10% (5.7-16.2)      | 59                     | 1318                     | 4.5% (3.4-5.8)      |
| BSS                | 25                     | 267                      | 9.4% (6.1-13.8)     | 171                    | 4418                     | 3.9% (3.3-4.5)      |
| BSHC               | 1                      | 9                        | 11.1% (0.3-61.9)    | 28                     | 1144                     | 2.4% (1.6-3.5)      |
| BSA Total          | 74                     | 1062                     | 7.0% (5.5-8.7)      | 483                    | 12804                    | 3.8% (3.4-4.1)      |

Poisson 95% Confidence Intervals presented

### Comment:

#### Referral to Assessment as a percentage of Women screened, last 6 Months, women aged 45-49 years

Screening commenced in this age group in July, 2004. For initial screens, the BSA program percentage (8.6%) was statistically lower than the target of <10% for the six month period. There was variation between lead providers initial screens with two lead providers above the target of <10%, and only one lead provider below the desired value of <7%. The percentages for initial screens reflect the proportion of true prevalent screens in each service, as well as other factors. As screening has only commenced recently in this age group, a biennium has not elapsed for subsequent screens to have occurred.

#### Referral to Assessment as a percentage of Women screened, last 6 Months, women aged 50-64 years

For initial screens the BSA program percentage (8.8%) was less than the expected value of <10% for the six month period, but more than the desired value of <7%. There was variation among lead providers with, 95% confidence intervals containing the target value in most cases. For subsequent screens, the BSA program percentage was less than the desired value of <4%, which was the case for the majority of lead providers. Percentages are similar to the previous period.

#### Referral to Assessment as a percentage of Women screened, last 6 Months, women aged 65-69 years

Screening in this age group commenced in July, 2004. The BSA program percentage was less than the expected value of <10% but greater than the desired value of <7%. For subsequent screens the BSA program percentage (3.8%) was less than the desired value of <4%, although confidence intervals contained the target value. 4 of the 6 lead providers were statistically below the expected value of <5%. A larger number of screens in this age group were subsequent, rather than initial screens, as women who had previously attended the program aged into the extended age group of 65-69 years.

*Description:*

Number of women referred to assessment as a percentage of all women screened

*Target:*

Initial (Prevalent) screen: expected value <10% and the desired value is <7%

Subsequent (Incident) screen: expected value <5% and the desired value is <4%

**2.d.2. Referral to Assessment as a percentage of Women screened, last 2 Years**

**Table 2d.2** Referral to Assessment as a percentage of Women screened, last 2 Years

| Lead Provider      | Jul 2003 to Jun 2005   |                          |                     |                        |                          |                     |
|--------------------|------------------------|--------------------------|---------------------|------------------------|--------------------------|---------------------|
|                    | Initial (Prevalent)    |                          |                     | Subsequent (Incident)  |                          |                     |
|                    | Referral to Assessment | Number of Women Screened | % of Women Screened | Referral to Assessment | Number of Women Screened | % of Women Screened |
| <i>45-49 years</i> |                        |                          |                     |                        |                          |                     |
| BSAN               | 106                    | 1351                     |                     | 0                      | 1                        |                     |
| BSM                | 179                    | 1948                     |                     | 0                      | 0                        |                     |
| BSCtoC             | 62                     | 912                      |                     | 1                      | 1                        |                     |
| BSC                | 55                     | 521                      |                     | 0                      | 2                        |                     |
| BSS                | 34                     | 317                      |                     | 0                      | 0                        |                     |
| BSHC               | 115                    | 1460                     |                     | 0                      | 3                        |                     |
| BSA Total          | 551                    | 6509                     |                     | 1                      | 7                        |                     |
| <i>50-64 years</i> |                        |                          |                     |                        |                          |                     |
| BSAN               | 1124                   | 14303                    | 7.9% (7.4-8.3)      | 1393                   | 46318                    | 3.0% (2.9-3.2)      |
| BSM                | 597                    | 6611                     | 9.0% (8.3-9.8)      | 979                    | 24300                    | 4.0% (3.8-4.3)      |
| BSCtoC             | 453                    | 5928                     | 7.6% (7.0-8.4)      | 592                    | 21492                    | 2.8% (2.5-3.0)      |
| BSC                | 681                    | 6025                     | 11.3% (10.5-12.2)   | 636                    | 16969                    | 3.7% (3.5-4.1)      |
| BSS                | 1003                   | 9976                     | 10.1% (9.4-10.7)    | 1488                   | 40738                    | 3.7% (3.5-3.8)      |
| BSHC               | 251                    | 3185                     | 7.9% (6.9-8.9)      | 268                    | 14337                    | 1.9% (1.7-2.1)      |
| BSA Total          | 4109                   | 46028                    | 8.9% (8.7-9.2)      | 5356                   | 164154                   | 3.3% (3.2-3.4)      |
| <i>65-69 years</i> |                        |                          |                     |                        |                          |                     |
| BSAN               | 55                     | 877                      |                     | 182                    | 5778                     |                     |
| BSM                | 22                     | 316                      |                     | 263                    | 5444                     |                     |
| BSCtoC             | 20                     | 342                      |                     | 107                    | 3820                     |                     |
| BSC                | 30                     | 297                      |                     | 141                    | 3227                     |                     |
| BSS                | 46                     | 532                      |                     | 293                    | 7616                     |                     |
| BSHC               | 1                      | 17                       |                     | 47                     | 2063                     |                     |
| BSA Total          | 174                    | 2381                     |                     | 1033                   | 27948                    |                     |

Poisson 95% Confidence Intervals presented

Note: Data for women aged 45-49 and 65-69 years represent 12 month period only.

**Comment:**

**Referral to Assessment as a percentage of Women screened, last 2 Years, women 45-49 years**

Screening in this age group commenced in July, 2004. This indicator cannot be interpreted, as a 2 year period has not yet elapsed.

**Referral to Assessment as a percentage of Women screened, last 2 Years, women 50-64 years**

For initial screens the BSA program percentage (8.9%) met the expected target value of <10% for the biennium although 95% confidence intervals contained the target value. There was variation among lead providers with only two lead providers not statistically below the target value of 10%. The percentages for initial screens reflect the proportion of true prevalent screens in each service, as well as other factors. For subsequent screens, the overall percentage (3.3%) met the desired value of <4%, which was also the case for all lead providers. Percentages are similar to the previous period.

**Referral to Assessment as a percentage of Women screened, last 2 Years, women 65-69 years**

Screening in this age group commenced in July, 2004. These data cannot be interpreted as a biennium has not yet elapsed.

## 2.e. False Positive Rate

### Description:

Measures the proportion of women who are recalled to assessment, but after assessment are found not to have cancer

### Target:

Initial (Prevalent) screen: expected value <9%, desired target <6%

Subsequent (Incident) screen: expected value <4%, desired target <3%

### 2.e.1. False positives as a percentage of Women screened, last 6 months

**Table 2e.1** Number with false positive results as a percentage of women screened, Last 6 Months

| Lead Provider      | Jan 2005 to Jun 2005      |                          |                     |                           |                          |                     |
|--------------------|---------------------------|--------------------------|---------------------|---------------------------|--------------------------|---------------------|
|                    | Initial (Prevalent)       |                          |                     | Subsequent (Incident)     |                          |                     |
|                    | Number of False Positives | Number of Women Screened | % of Women Screened | Number of False Positives | Number of Women Screened | % of Women Screened |
| <i>45-49 years</i> |                           |                          |                     |                           |                          |                     |
| BSAN               | 79                        | 1297                     | 6.1% (5.0-7.2)      | 0                         | 0                        |                     |
| BSM                | 157                       | 1842                     | 8.5% (7.5-9.6)      | 0                         | 0                        |                     |
| BSCtoC             | 58                        | 908                      | 6.4% (5.1-7.7)      | 1                         | 1                        |                     |
| BSC                | 46                        | 477                      | 9.6% (7.5-11.9)     | 0                         | 2                        |                     |
| BSS                | 30                        | 315                      | 9.5% (7.0-12.4)     | 0                         | 0                        |                     |
| BSHC               | 81                        | 1030                     | 7.9% (6.5-9.2)      | 0                         | 3                        |                     |
| BSA Total          | 451                       | 5869                     | 7.7% (7.1-8.3)      | 1                         | 6                        |                     |
| <i>50-64 years</i> |                           |                          |                     |                           |                          |                     |
| BSAN               | 154                       | 2855                     | 5.4% (4.7-6.1)      | 264                       | 11120                    | 2.4% (2.1-2.6)      |
| BSM                | 121                       | 1582                     | 7.6% (6.6-8.8)      | 207                       | 5795                     | 3.6% (3.2-4.0)      |
| BSCtoC             | 101                       | 1360                     | 7.4% (6.3-8.6)      | 149                       | 5414                     | 2.8% (2.4-3.1)      |
| BSC                | 170                       | 1731                     | 9.8% (8.7-11.0)     | 161                       | 4796                     | 3.4% (2.9-3.8)      |
| BSS                | 256                       | 2615                     | 9.8% (8.8-10.7)     | 380                       | 12505                    | 3.0% (2.8-3.3)      |
| BSHC               | 57                        | 787                      | 7.2% (5.7-8.8)      | 42                        | 3951                     | 1.1% (0.8-1.3)      |
| BSA Total          | 859                       | 10930                    | 7.9% (7.4-8.3)      | 1203                      | 43581                    | 2.8% (2.6-2.9)      |
| <i>65-69 years</i> |                           |                          |                     |                           |                          |                     |
| BSAN               | 10                        | 355                      | 2.8% (1.4-4.2)      | 58                        | 2220                     | 2.6% (2.1-3.2)      |
| BSM                | 7                         | 153                      | 4.6% (2.0-7.2)      | 89                        | 2252                     | 4.0% (3.3-4.6)      |
| BSCtoC             | 8                         | 118                      | 6.8% (3.4-11)       | 29                        | 1452                     | 2.0% (1.4-2.6)      |
| BSC                | 12                        | 160                      | 7.5% (4.4-11.3)     | 41                        | 1318                     | 3.1% (2.4-3.9)      |
| BSS                | 16                        | 267                      | 6.0% (3.7-8.6)      | 130                       | 4418                     | 2.9% (2.5-3.4)      |
| BSHC               | 0                         | 9                        | 0.0% (0.0-28.3)     | 17                        | 1144                     | 1.5% (1.0-2.1)      |
| BSA Total          | 53                        | 1062                     | 5.0% (4.0-6.1)      | 364                       | 12804                    | 2.8% (2.6-3.1)      |

Exact binomial 95% Confidence Intervals presented

### Comment:

#### False positives as a percentage of Women screened, last 6 months, women aged 45-49 years

For initial screens the BSA program false positive rate was 7.7%, which met the expected value of <9% but was above the desired value of <6%. The majority of lead providers were below the target value of <9%, only BSC and BSS were marginally above 9%. As screening in this age group commenced in July, 2004 and women have not yet returned for a subsequent screen, the subsequent screens data cannot be interpreted.

#### False positives as a percentage of Women screened, last 6 months, women aged 50-64 years

For initial screens the BSA program percentage met the expected value of <9%, but was more than the desired value of <6%. There was variation among lead providers ranging from 5.4% to 9.8%. The BSA program percentage (7.9%) was similar to the previous 6 month period (7.8%). For subsequent screens, the BSA program percentage was less than the desired value of <3%. All lead providers were below the expected value of <4%. Percentages were similar to the previous 6 month period.

#### False positives as a percentage of Women screened, last 6 months, women aged 65-69 years

For initial screens the BSA program percentage (5.0%) met the target of <9%. There was variation across lead providers (false positive rates ranged from 0% to 7.5% for initial screens), with the variation likely attributable to the small numbers of initial screens in this age group (screening commenced in July, 2004). For subsequent screens, the BSA program percentage (2.8%), and the percentage for each lead provider, met the expected value of <4% with the exception of BSM. There was no substantial variation across lead providers, and two of the six lead providers met the desired value of <3% (BSCtoC, BSHC).

*Description:*

Measures the proportion of women who are recalled to assessment, but after assessment are found not to have cancer

*Target:*

Initial (Prevalent) screen: expected value <9%, desired target <6%

Subsequent (Incident) screen: expected value <4%, desired target <3%

**2.e.2. False positives as a percentage of Women screened, last 2 years**

**Table 2e.2** Number with false positive results as a percentage of women screened, Last 2 Years

| Lead Provider      | Jul 2003 to Jun 2005      |                          |                     |                           |                          |                     |
|--------------------|---------------------------|--------------------------|---------------------|---------------------------|--------------------------|---------------------|
|                    | Initial (Prevalent)       |                          |                     | Subsequent (Incident)     |                          |                     |
|                    | Number of False Positives | Number of Women Screened | % of Women Screened | Number of False Positives | Number of Women Screened | % of Women Screened |
| <i>45-49 years</i> |                           |                          |                     |                           |                          |                     |
| BSAN               | 82                        | 1351                     |                     | 0                         | 1                        |                     |
| BSM                | 167                       | 1948                     |                     | 0                         | 0                        |                     |
| BSCtoC             | 58                        | 912                      |                     | 1                         | 1                        |                     |
| BSC                | 52                        | 521                      |                     | 0                         | 2                        |                     |
| BSS                | 30                        | 317                      |                     | 0                         | 0                        |                     |
| BSHC               | 106                       | 1460                     |                     | 0                         | 3                        |                     |
| BSA Total          | 495                       | 6509                     |                     | 1                         | 7                        |                     |
| <i>50-64 years</i> |                           |                          |                     |                           |                          |                     |
| BSAN               | 918                       | 14303                    | 6.4% (6.1-6.8)      | 1092                      | 46318                    | 2.4% (2.2-2.5)      |
| BSM                | 540                       | 6611                     | 8.2% (7.6-8.7)      | 833                       | 24300                    | 3.4% (3.2-3.6)      |
| BSCtoC             | 395                       | 5928                     | 6.7% (6.1-7.2)      | 487                       | 21492                    | 2.3% (2.1-2.4)      |
| BSC                | 642                       | 6025                     | 10.7% (10-11.3)     | 530                       | 16969                    | 3.1% (2.9-3.3)      |
| BSS                | 915                       | 9976                     | 9.2% (8.7-9.7)      | 1287                      | 40738                    | 3.2% (3.0-3.3)      |
| BSHC               | 229                       | 3185                     | 7.2% (6.4-7.9)      | 194                       | 14337                    | 1.4% (1.2-1.5)      |
| BSA Total          | 3639                      | 46028                    | 7.9% (7.7-8.1)      | 4423                      | 164154                   | 2.7% (2.6-2.8)      |
| <i>65-69 years</i> |                           |                          |                     |                           |                          |                     |
| BSAN               | 40                        | 877                      |                     | 122                       | 5778                     |                     |
| BSM                | 21                        | 316                      |                     | 216                       | 5444                     |                     |
| BSCtoC             | 15                        | 342                      |                     | 80                        | 3820                     |                     |
| BSC                | 26                        | 297                      |                     | 108                       | 3227                     |                     |
| BSS                | 32                        | 532                      |                     | 223                       | 7616                     |                     |
| BSHC               | 0                         | 17                       |                     | 29                        | 2063                     |                     |
| BSA Total          | 134                       | 2381                     |                     | 778                       | 27948                    |                     |

Exact binomial 95% Confidence Intervals presented

Note: Data for women aged 45-49 and 65-69 years represent 12 month period only.

**Comment:**

**False positives as a percentage of Women screened, last 2 years, women 45-49 years**

Screening in this age group commenced in July, 2004. The data for both initial and subsequent screens represent a 12 month period, and cannot be interpreted as a biennium has not yet elapsed.

**False positives as a percentage of Women screened, last 2 years, women 50-64 years**

For initial screens the BSA program percentage met the expected value of <9%, but was more than the desired value of <6%, and was similar to the previous 6 month period (7.8%). There was variation among lead providers with only two services above 9% (BSC, BSS). False positive rates for each lead provider were similar to the previous 6 month period. For subsequent screens, the BSA program percentage was less than the desired value of <3%, although 3 of the 7 lead providers registered values slightly above 3%. All met the expected value of <4%. Percentages were similar to the previous period.

**False positives as a percentage of Women screened, last 2 years, 65-69 years**

Screening in this age group commenced in July, 2004. The data for initial and subsequent screens represent a 12 month period, and cannot be interpreted as a 2 year period has not yet elapsed.

## 2.f. Positive Predictive Value

### Description:

The proportion of women screened positive who are ultimately diagnosed as having cancer

### Target:

$\geq 9\%$ . The number with diagnosed cancer as a percentage of the number referred to assessment.

### 2.f.1. Breast Cancers as a percentage of Referrals to Assessment, Last 6 Months

**Table 2f.1** Cancers as a percentage of Referrals to Assessment, Last 6 Months

| Lead Provider      | Jan 2005 to Jun 2005 |                     |                   |                       |                     |                   |
|--------------------|----------------------|---------------------|-------------------|-----------------------|---------------------|-------------------|
|                    | Initial (Prevalent)  |                     |                   | Subsequent (Incident) |                     |                   |
|                    | Number of Cancers    | Number of Referrals | % of Referrals    | Number of Cancers     | Number of Referrals | % of Referrals    |
| <b>45-49 years</b> |                      |                     |                   |                       |                     |                   |
| BSAN               | 12                   | 103                 | 11.7% (6.8-17.5)  | 0                     | 0                   |                   |
| BSM                | 4                    | 167                 | 2.4% (0.6-4.2)    | 0                     | 0                   |                   |
| BSCtoC             | 4                    | 62                  | 6.5% (1.6-11.3)   | 0                     | 1                   |                   |
| BSC                | 2                    | 49                  | 4.1% (0.0-8.2)    | 0                     | 0                   |                   |
| BSS                | 4                    | 34                  | 11.8% (2.9-20.6)  | 0                     | 0                   |                   |
| BSHC               | 5                    | 90                  | 5.6% (2.2-10.0)   | 0                     | 0                   |                   |
| BSA Total          | 31                   | 505                 | 6.1% (4.4-7.9)    | 0                     | 1                   |                   |
| <b>50-64 years</b> |                      |                     |                   |                       |                     |                   |
| BSAN               | 17                   | 192                 | 8.9% (5.7-12.5)   | 61                    | 344                 | 17.7% (14.5-21.2) |
| BSM                | 12                   | 136                 | 8.8% (5.1-13.2)   | 30                    | 240                 | 12.5% (9.2-16.3)  |
| BSCtoC             | 11                   | 117                 | 9.4% (5.1-13.7)   | 26                    | 181                 | 14.4% (9.9-18.8)  |
| BSC                | 3                    | 176                 | 1.7% (0.6-3.4)    | 25                    | 189                 | 13.2% (9.5-17.5)  |
| BSS                | 16                   | 275                 | 5.8% (3.6-8.4)    | 59                    | 445                 | 13.3% (10.6-16.0) |
| BSHC               | 3                    | 62                  | 4.8% (1.6-9.7)    | 15                    | 59                  | 25.4% (16.9-35.6) |
| BSA Total          | 62                   | 958                 | 6.5% (5.2-7.8)    | 216                   | 1458                | 14.8% (13.3-16.4) |
| <b>65-69 years</b> |                      |                     |                   |                       |                     |                   |
| BSAN               | 4                    | 16                  | 25% (6.3-43.8)    | 17                    | 80                  | 21.3% (13.8-28.8) |
| BSM                | 0                    | 7                   | 0.0% (0.0-34.8)   | 19                    | 109                 | 17.4% (11.9-23.9) |
| BSCtoC             | 1                    | 9                   | 11.1% (0.0-33.3)  | 7                     | 36                  | 19.4% (8.3-30.6)  |
| BSC                | 4                    | 16                  | 25.0% (6.3-43.8)  | 14                    | 59                  | 23.7% (15.3-33.9) |
| BSS                | 9                    | 25                  | 36.0% (20.0-52.0) | 39                    | 171                 | 22.8% (17.5-28.1) |
| BSHC               | 1                    | 1                   | 100% (5.0-100)    | 11                    | 28                  | 39.3% (25.0-53.6) |
| BSA Total          | 19                   | 74                  | 25.7% (17.6-33.8) | 107                   | 483                 | 22.2% (19.0-25.3) |

Exact binomial 95% Confidence Intervals presented

### Comment:

#### Breast Cancers as a percentage of Referrals to Assessment, Last 6 Months, women aged 45-49 years

For initial screens the BSA program percentage was 6.1%, which was below the target of  $\geq 9\%$ , and was also lower than percentages in older age groups. There was variation across lead providers with percentages ranging from 2.4% to 11.7%. Screening commenced in July, 2004 in this age group, and a biennium has not yet elapsed for women to return for a subsequent screen.

#### Breast Cancers as a percentage of Referrals to Assessment, Last 6 Months, women aged 50-64 years

For initial screens the BSA program percentage (6.5%) was statistically lower than the target value of  $\geq 9\%$  and was lower than the previous 6 month period (overall percentage 9.6%). There was variation among lead providers (percentages ranging from 1.7% to 9.4%) with 95% confidence intervals containing the target value for most lead providers. For subsequent screens, the overall percentage (14.8%) was statistically higher than the target value of 9%, and similar to the overall percentage from the previous six month period (16.4%). All lead providers were above the target of  $\geq 9\%$ , with percentages ranging from 12.5% to 25.4%.

#### Breast Cancers as a percentage of Referrals to Assessment, Last 6 Months, women aged 65-69 years

For initial screens, the BSA program percentage in this age group was 25.7%, which was statistically higher than the  $\geq 9\%$  target value. There was variation across lead providers with very small numbers of cancers and referrals. For subsequent screens, the overall percentage was 22.2%, which was statistically higher than the target of  $\geq 9\%$ . All lead providers were above the target, with percentages ranging from 19.4% to 39.3%.

*Description:*

The proportion of women screened positive who are ultimately diagnosed as having cancer

*Target:*

>= 9%. The number with diagnosed cancer as a percentage of the number referred to assessment.

**2.f.2. Breast Cancers as a percentage of Referrals to Assessment, Last 2 Years**

**Table 2f.2** Cancers as a percentage of Referrals to Assessment, Last 2 Years

| Lead Provider      | Jul 2003 to Jun 2005 |                     |                  |                       |                     |                   |
|--------------------|----------------------|---------------------|------------------|-----------------------|---------------------|-------------------|
|                    | Initial (Prevalent)  |                     |                  | Subsequent (Incident) |                     |                   |
|                    | Number of Cancers    | Number of Referrals | % of Referrals   | Number of Cancers     | Number of Referrals | % of Referrals    |
| <b>45-49 years</b> |                      |                     |                  |                       |                     |                   |
| BSAN               | 12                   | 106                 |                  | 0                     | 0                   |                   |
| BSM                | 6                    | 179                 |                  | 0                     | 0                   |                   |
| BSCtoC             | 4                    | 62                  |                  | 0                     | 1                   |                   |
| BSC                | 2                    | 55                  |                  | 0                     | 0                   |                   |
| BSS                | 4                    | 34                  |                  | 0                     | 0                   |                   |
| BSHC               | 5                    | 115                 |                  | 0                     | 0                   |                   |
| BSA Total          | 33                   | 551                 |                  | 0                     | 1                   |                   |
| <b>50-64 years</b> |                      |                     |                  |                       |                     |                   |
| BSAN               | 123                  | 1124                | 10.9% (9.4-12.5) | 232                   | 1393                | 16.7% (15.0-18.3) |
| BSM                | 48                   | 597                 | 8.0% (6.2-9.9)   | 136                   | 979                 | 13.9% (12.1-15.7) |
| BSCtoC             | 41                   | 453                 | 9.1% (6.8-11.3)  | 93                    | 592                 | 15.7% (13.3-18.2) |
| BSC                | 29                   | 681                 | 4.3% (3.1-5.6)   | 98                    | 636                 | 15.4% (13.1-17.8) |
| BSS                | 80                   | 1003                | 8.0% (6.6-9.4)   | 191                   | 1488                | 12.8% (11.4-14.2) |
| BSHC               | 14                   | 251                 | 5.6% (3.2-8.0)   | 69                    | 268                 | 25.7% (21.3-30.2) |
| BSA Total          | 335                  | 4109                | 8.2% (7.4-8.9)   | 819                   | 5356                | 15.3% (14.5-16.1) |
| <b>65-69 years</b> |                      |                     |                  |                       |                     |                   |
| BSAN               | 9                    | 55                  |                  | 52                    | 182                 |                   |
| BSM                | 1                    | 22                  |                  | 45                    | 263                 |                   |
| BSCtoC             | 4                    | 20                  |                  | 27                    | 107                 |                   |
| BSC                | 4                    | 30                  |                  | 28                    | 141                 |                   |
| BSS                | 13                   | 46                  |                  | 67                    | 293                 |                   |
| BSHC               | 1                    | 1                   |                  | 17                    | 47                  |                   |
| BSA Total          | 32                   | 174                 |                  | 236                   | 1033                |                   |

Exact binomial 95% Confidence Intervals presented

Note: Data for women aged 45-49 and 65-69 years represent 12 month period only.

**Comment:**

**Breast Cancers as a percentage of Referrals to Assessment, Last 2 Years, women 45-49 years**

Screening commenced in this age group in July, 2004 and the data represent a 12 month period. These data cannot be interpreted as a 2 year period has not yet elapsed.

**Breast Cancers as a percentage of Referrals to Assessment, Last 2 Years, women 50-64 years**

For initial screens the BSA program percentage (8.2%) was below the target value of >= 9%, but there was variation among lead providers with the 95% confidence intervals for most containing the target value. Percentages ranged from 4.3% to 10.9%. For subsequent screens, the overall percentage (15.3%) was higher than the target value of 9%, and this was the case for all lead providers. Percentages are similar to the previous period.

**Breast Cancers as a percentage of Referrals to Assessment, Last 2 Years, women 65-69 years**

Screening commenced in this age group in July, 2004. A two year period has not yet elapsed.

## 2.g. Benign biopsy weight

### Description:

Measures the weight of the open biopsy specimen presented to the pathologist

### Target:

> 90% or more of open biopsies, which prove to be benign, should weigh < 30g.

## 2.g. Benign open biopsies which weigh <30g , last 2 years, women aged 45-69 years

| <b>Table 2g</b> Benign Open Biopsies weighing <30g as a percent of all Benign Open Biopsies |                            |                            |                           |                         |
|---|----------------------------|----------------------------|---------------------------|-------------------------|
| Lead Provider   | Last 2 Years               |                            |                           |                         |
|   | Jul 2003 to Jun 2005       |                            |                           |                         |
|   | Benign Open Biopsies < 30g | Total Benign Open Biopsies | % of Benign Open Biopsies | 95% Confidence Interval |
| <i>45-49 years</i>  |                            |                            |                           |                         |
| BSAN  | 1                          | 4                          |                           |                         |
| BSM   | 3                          | 4                          |                           |                         |
| BSCtoC  | *                          | *                          |                           |                         |
| BSC   | 2                          | 2                          |                           |                         |
| BSS   | 0                          | 0                          |                           |                         |
| BSHC  | 4                          | 6                          |                           |                         |
| BSA Total   | 10                         | 16                         |                           |                         |
| <i>50-64 years</i>  |                            |                            |                           |                         |
| BSAN  | 63                         | 84                         | 75.0%                     | 66.7-82.1               |
| BSM   | 24                         | 35                         | 68.6%                     | 54.3-80.0               |
| BSCtoC  | *                          | *                          | *                         | *                       |
| BSC   | 15                         | 23                         | 65.2%                     | 47.8-82.6               |
| BSS   | 22                         | 41                         | 53.7%                     | 41.5-65.9               |
| BSHC  | 24                         | 32                         | 75.0%                     | 62.5-87.5               |
| BSA Total   | 148                        | 215                        | 68.8%                     | 63.7-74.0               |
| <i>65-69 years</i>  |                            |                            |                           |                         |
| BSAN  | 5                          | 5                          |                           |                         |
| BSM   | 4                          | 8                          |                           |                         |
| BSCtoC  | *                          | *                          |                           |                         |
| BSC   | 7                          | 10                         |                           |                         |
| BSS   | 2                          | 6                          |                           |                         |
| BSHC  | 1                          | 4                          |                           |                         |
| BSA Total   | 19                         | 33                         |                           |                         |

\* 50% of the benign open biopsies had a default weight recorded within the national monitoring data set so results for BreastScreen Coast to Coast have not been reported. Exact binomial 95% Confidence Intervals presented

Note: Data for women aged 45-49 and 65-69 years represent 12 month period only.

### Comment:

#### Benign open biopsies which weigh <30g , last 2 years, women aged 45-49 years

Screening commenced in this age group in July 2004. These data represent a 12 month period, and cannot be interpreted as a biennial rate.

#### Benign open biopsies which weigh <30g , last 2 years, women aged 50-64 years

The BSA program percentage and all of the lead providers registered values less than the target of >90%. Confidence intervals indicate that a few of the differences between providers are statistically significant.

#### Benign open biopsies which weigh <30g , last 2 years, women aged 65-69 years

Screening commenced in this age group in July 2004. These data represent a 12 month period, and cannot be interpreted as a biennial rate.

## 2.h. Pre-operative diagnosis rate

### Description:

The number of women in which a needle biopsy provides the definitive diagnosis (pre-operative diagnosis), as a percentage of all women diagnosed with breast cancer in the programme

### Target:

> 90% (desired target)

> 70% (expected target)

**Table 2h** Percentage of women with a preoperative diagnosis of cancer

| Lead Provider      | Last 6 Months                    |                   |   | Last 2 Years                     |                   |   |
|--------------------|----------------------------------|-------------------|---|----------------------------------|-------------------|---|
|                    | Jan 2005 to Jun 2005             |                   |   | Jul 2003 to Jun 2005             |                   |   |
|                    | Preoperative diagnosis of Cancer | Number of Cancers | Percentage of cancers with a preoperative diagnosis | Preoperative diagnosis of Cancer | Number of Cancers | Percentage of cancers with a preoperative diagnosis |
| <b>45-49 years</b> |                                  |                   |   |                                  |                   |   |
| BSAN               | 11                               | 12                | 91.7% (75.0-100)                                    | 11                               | 12                |   |
| BSM                | 4                                | 4                 | 100% (47.3-100)                                     | 6                                | 6                 |   |
| BSCtoC             | 4                                | 4                 | 100% (47.3-100)                                     | 4                                | 4                 |   |
| BSC                | 0                                | 2                 | 0.0% (0.0-77.6)                                     | 0                                | 2                 |   |
| BSS                | 2                                | 4                 | 50.0% (0.0-100)                                     | 2                                | 4                 |   |
| BSHC               | 5                                | 5                 | 100% (54.9-100)                                     | 5                                | 5                 |   |
| BSA Total          | 26                               | 31                | 83.9% (71.0-93.5)                                   | 28                               | 33                |   |
| <b>50-64 years</b> |                                  |                   |   |                                  |                   |   |
| BSAN               | 77                               | 78                | 98.7% (96.2-100)                                    | 330                              | 355               | 93.0% (90.7-95.2)                                   |
| BSM                | 40                               | 42                | 95.2% (90.5-100)                                    | 175                              | 184               | 95.1% (92.4-97.8)                                   |
| BSCtoC             | 35                               | 37                | 94.6% (89.2-100)                                    | 128                              | 134               | 95.5% (92.5-98.5)                                   |
| BSC                | 25                               | 28                | 89.3% (78.6-96.4)                                   | 105                              | 127               | 82.7% (77.2-88.2)                                   |
| BSS                | *                                | *                 | *   | *                                | *                 | *   |
| BSHC               | 15                               | 18                | 83.3% (66.7-94.4)                                   | 66                               | 83                | 79.5% (72.3-86.7)                                   |
| BSA Total          | 235                              | 278               | 84.5% (80.9-88.1)                                   | 1031                             | 1154              | 89.3% (87.9-90.8)                                   |
| <b>65-69 years</b> |                                  |                   |   |                                  |                   |   |
| BSAN               | 20                               | 21                | 95.2% (85.7-100)                                    | 56                               | 61                |   |
| BSM                | 19                               | 19                | 100% (85.4-100)                                     | 46                               | 46                |   |
| BSCtoC             | 8                                | 8                 | 100% (68.8-100)                                     | 31                               | 31                |   |
| BSC                | 17                               | 18                | 94.4% (83.3-100)                                    | 29                               | 32                |   |
| BSS                | 26                               | 48                | 54.2% (41.7-66.7)                                   | 55                               | 80                |   |
| BSHC               | 12                               | 12                | 100% (77.9-100)                                     | 15                               | 18                |   |
| BSA Total          | 102                              | 126               | 81.0% (75.4-86.5)                                   | 232                              | 268               |   |

Exact binomial 95% Confidence Intervals presented

\*Incomplete data from BSS

### Comment:

#### Pre-operative diagnosis rate, women aged 45-49 years

For the last 6 month period the BSA program percentage was above the target of >70%. Much smaller numbers of cancers and positive biopsies were evident in this age group, compared with older age groups. Screening commenced in this age group in July, 2004, and the biennial data cannot be interpreted.

#### Pre-operative diagnosis rate, women aged 50-64 years

For both the last 6 months and the last 2 years the BSA program percentage of women diagnosed by needle biopsy was greater than the expected value of >70%. There was little variation across lead providers, with all but one lead provider exceeding the target of >70%.

#### Pre-operative diagnosis rate, women aged 65-69 years

For the last 6 month period the BSA program percentage was above the expected target of >70%. There was little variation across lead providers with the exception of BSS, which reported a lower rate than other lead providers. Screening commenced in this age group in July, 2004, and the biennial data cannot be interpreted.

## 2.1. Specificity

### Description:

Specificity is the proportion of women without breast cancer at screening who have a negative screen result. This is estimated by expressing the number of women who have a negative screen result as a percentage of all women screened excluding the women screened positive with cancer.

This is calculated as: Number with true negative screening results as a percentage of this number plus the number with false positive screening results.

### Target:

> 93 %

### 2.1.1. Specificity, last 6 months

**Table 21.1** Estimated Specificity of BSA by Lead Provider, Last 6 Months

| Lead Provider      | Jan 2005 to Jun 2005               |                                       |                           |                                    |                                       |                           |                                 |
|--------------------|------------------------------------|---------------------------------------|---------------------------|------------------------------------|---------------------------------------|---------------------------|---------------------------------|
|                    | Initial (Prevalent)                |                                       |                           | Subsequent (Incident)              |                                       |                           | Total Estimated Specificity (%) |
|                    | Negative Screens (RRS from Screen) | Negative Screens plus False Positives | Estimated Specificity (%) | Negative Screens (RRS from Screen) | Negative Screens plus False Positives | Estimated Specificity (%) |                                 |
| <b>45-49 years</b> |                                    |                                       |                           |                                    |                                       |                           |                                 |
| BSAN               | 1194                               | 1273                                  | 93.8%                     | 0                                  | 0                                     |                           | 93.8%                           |
| BSM                | 1675                               | 1832                                  | 91.4%                     | 0                                  | 0                                     |                           | 91.4%                           |
| BSCtoC             | 846                                | 904                                   | 93.6%                     | 0                                  | 1                                     |                           | 93.5%                           |
| BSC                | 428                                | 474                                   | 90.3%                     | 2                                  | 2                                     |                           | 90.3%                           |
| BSS                | 281                                | 311                                   | 90.4%                     | 0                                  | 0                                     |                           | 90.4%                           |
| BSHC               | 940                                | 1021                                  | 92.1%                     | 3                                  | 3                                     |                           | 92.1%                           |
| BSA Total          | 5364                               | 5815                                  | 92.2%                     | 5                                  | 6                                     |                           | 92.2%                           |
| <b>50-64 years</b> |                                    |                                       |                           |                                    |                                       |                           |                                 |
| BSAN               | 2663                               | 2817                                  | 94.5%                     | 10776                              | 11040                                 | 97.6%                     | 97.0%                           |
| BSM                | 1446                               | 1567                                  | 92.3%                     | 5555                               | 5762                                  | 96.4%                     | 95.5%                           |
| BSCtoC             | 1243                               | 1344                                  | 92.5%                     | 5233                               | 5382                                  | 97.2%                     | 96.3%                           |
| BSC                | 1555                               | 1725                                  | 90.1%                     | 4607                               | 4768                                  | 96.6%                     | 94.9%                           |
| BSS                | 2340                               | 2596                                  | 90.1%                     | 12060                              | 12440                                 | 96.9%                     | 95.8%                           |
| BSHC               | 725                                | 782                                   | 92.7%                     | 3892                               | 3934                                  | 98.9%                     | 97.9%                           |
| BSA Total          | 9972                               | 10831                                 | 92.1%                     | 42123                              | 43326                                 | 97.2%                     | 96.2%                           |
| <b>65-69 years</b> |                                    |                                       |                           |                                    |                                       |                           |                                 |
| BSAN               | 339                                | 349                                   | 97.1%                     | 2140                               | 2198                                  | 97.4%                     | 97.3%                           |
| BSM                | 146                                | 153                                   | 95.4%                     | 2143                               | 2232                                  | 96.0%                     | 96.0%                           |
| BSCtoC             | 109                                | 117                                   | 93.2%                     | 1416                               | 1445                                  | 98.0%                     | 97.6%                           |
| BSC                | 144                                | 156                                   | 92.3%                     | 1259                               | 1300                                  | 96.8%                     | 96.4%                           |
| BSS                | 242                                | 258                                   | 93.8%                     | 4247                               | 4377                                  | 97.0%                     | 96.9%                           |
| BSHC               | 8                                  | 8                                     | 100.0%                    | 1116                               | 1133                                  | 98.5%                     | 98.5%                           |
| BSA Total          | 988                                | 1041                                  | 94.9%                     | 12321                              | 12685                                 | 97.1%                     | 97.0%                           |

### Comment:

Interval cancers are not included in calculations.

#### Specificity, last 6 months, women aged 45-49 years

For initial screens, BSA program specificity was 92.2%, approaching the target of >93%. There was little variation across lead providers for this 6 month period. Screening commenced in this age group in July, 2004, and the subsequent screening data cannot be interpreted.

#### Specificity, last 6 months, women aged 50-64 years

For initial screens, BSA program specificity of 92.1% was close to the target of >93%, with little variation (<5%) among lead providers. For subsequent screens the BSA program specificity (97.2%), and the specificity for each provider was >93%. Specificities are similar to the previous period.

#### Specificity, last 6 months, women aged 65-69 years

For initial screens, BSA program specificity was 94.9%, which was greater than the target of >93%. There was little variation across lead providers for this 6 month period, with the exception of BSHC where very small numbers were reported. For subsequent screens, the BSA program specificity was 97%, which was greater than the target of 93%. There was little variation across lead providers.

*Description:*

Specificity is the proportion of women without breast cancer at screening who have a negative screen result. This is estimated by expressing the number of women who have a negative screen result as a percentage of all women screened excluding the women screened positive with cancer.

This is calculated as: Number with true negative screening results as a percentage of this number plus the number with false positive screening results.

*Target:*

> 93 %

**2.1.2. Specificity, last 2 years**

**Table 21.2** Estimated Specificity of BSA by Lead Provider, Last 2 Years

| Lead Provider      | Jul 2003 to Jun 2005               |                                       |                           |                                    |                                       |                           |                                 |
|--------------------|------------------------------------|---------------------------------------|---------------------------|------------------------------------|---------------------------------------|---------------------------|---------------------------------|
|                    | Initial (Prevalent)                |                                       |                           | Subsequent (Incident)              |                                       |                           | Total Estimated Specificity (%) |
|                    | Negative Screens (RRS from Screen) | Negative Screens plus False Positives | Estimated Specificity (%) | Negative Screens (RRS from Screen) | Negative Screens plus False Positives | Estimated Specificity (%) |                                 |
| <b>45-49 years</b> |                                    |                                       |                           |                                    |                                       |                           |                                 |
| BSAN               | 1245                               | 1327                                  |                           | 1                                  | 1                                     |                           |                                 |
| BSM                | 1769                               | 1936                                  |                           | 0                                  | 0                                     |                           |                                 |
| BSCtoC             | 850                                | 908                                   |                           | 0                                  | 1                                     |                           |                                 |
| BSC                | 466                                | 518                                   |                           | 2                                  | 2                                     |                           |                                 |
| BSS                | 283                                | 313                                   |                           | 0                                  | 0                                     |                           |                                 |
| BSHC               | 1345                               | 1451                                  |                           | 3                                  | 3                                     |                           |                                 |
| BSA Total          | 5958                               | 6453                                  |                           | 6                                  | 7                                     |                           |                                 |
| <b>50-64 years</b> |                                    |                                       |                           |                                    |                                       |                           |                                 |
| BSAN               | 13179                              | 14097                                 | 93.5%                     | 44925                              | 46017                                 | 97.6%                     | 96.7%                           |
| BSM                | 6014                               | 6554                                  | 91.8%                     | 23321                              | 24154                                 | 96.6%                     | 95.5%                           |
| BSCtoC             | 5475                               | 5870                                  | 93.3%                     | 20900                              | 21387                                 | 97.7%                     | 96.8%                           |
| BSC                | 5344                               | 5986                                  | 89.3%                     | 16333                              | 16863                                 | 96.9%                     | 94.9%                           |
| BSS                | 8973                               | 9888                                  | 90.7%                     | 39250                              | 40537                                 | 96.8%                     | 95.6%                           |
| BSHC               | 2934                               | 3163                                  | 92.8%                     | 14069                              | 14263                                 | 98.6%                     | 97.6%                           |
| BSA Total          | 41919                              | 45558                                 | 92.0%                     | 158798                             | 163221                                | 97.3%                     | 96.1%                           |
| <b>65-69 years</b> |                                    |                                       |                           |                                    |                                       |                           |                                 |
| BSAN               | 822                                | 862                                   |                           | 5596                               | 5718                                  |                           |                                 |
| BSM                | 294                                | 315                                   |                           | 5181                               | 5397                                  |                           |                                 |
| BSCtoC             | 322                                | 337                                   |                           | 3713                               | 3793                                  |                           |                                 |
| BSC                | 267                                | 293                                   |                           | 3086                               | 3194                                  |                           |                                 |
| BSS                | 486                                | 518                                   |                           | 7323                               | 7546                                  |                           |                                 |
| BSHC               | 16                                 | 16                                    |                           | 2016                               | 2045                                  |                           |                                 |
| BSA Total          | 2207                               | 2341                                  |                           | 26915                              | 27693                                 |                           |                                 |

Note: Data for women aged 45-49 and 65-69 years represent 12 month period only.

**Comment:**

**Specificity, last 2 years, 45-49 years**

Screening commenced in this age group in July, 2004, and the biennial data cannot be interpreted

**Specificity, last 2 years, 50-64 years**

For initial screens, BSA program specificity for the biennium was 92%, approaching the target of >93%. There was little variation across lead providers. For subsequent screens the overall specificity (97.3%), and the specificity for each provider was above the target of >93%. Specificities are similar to the previous period.

**Specificity, last 2 years, 65-69 years**

Screening commenced in this age group in July, 2004, and the biennial data cannot be interpreted

## 2.m. Benign Biopsy Rate

### Description:

The number of open biopsies that turn out to be benign lesions, expressed as a proportion of women screened

### Target:

Initial (Prevalent) screen:  $\leq 3.5$  per 1000 women screened

Subsequent (Incident) screen:  $\leq 1.6$  per 1000 women screened

### 2.m.1. Benign open biopsies, last 2 years

**Table 2m.2** Benign Open Biopsies as a proportion of women screened, Last 2 Years

| Lead Provider      | Jul 2003 to Jun 2005 |                   |                                  |                         |                       |                   |                                  |                         |
|--------------------|----------------------|-------------------|----------------------------------|-------------------------|-----------------------|-------------------|----------------------------------|-------------------------|
|                    | Initial (Prevalent)  |                   |                                  |                         | Subsequent (Incident) |                   |                                  |                         |
|                    | Benign Open Biopsies | Number of screens | Benign Biopsies per 1000 screens | 95% Confidence Interval | Benign Open Biopsies  | Number of screens | Benign Biopsies per 1000 screens | 95% Confidence Interval |
| <i>45-49 years</i> |                      |                   |                                  |                         |                       |                   |                                  |                         |
| BSAN               | 4                    | 1351              |                                  |                         | 0                     | 1                 |                                  |                         |
| BSM                | 4                    | 1948              |                                  |                         | 0                     | 0                 |                                  |                         |
| BSCtoC             | 0                    | 912               |                                  |                         | 0                     | 1                 |                                  |                         |
| BSC                | 2                    | 521               |                                  |                         | 0                     | 2                 |                                  |                         |
| BSS                | 0                    | 317               |                                  |                         | 0                     | 0                 |                                  |                         |
| BSHC               | 6                    | 1460              |                                  |                         | 0                     | 3                 |                                  |                         |
| BSA Total          | 16                   | 6509              |                                  |                         | 0                     | 7                 |                                  |                         |
| <i>50-64 years</i> |                      |                   |                                  |                         |                       |                   |                                  |                         |
| BSAN               | 39                   | 14303             | 2.7                              | 1.9-3.7                 | 45                    | 46318             | 1.0                              | 0.7-1.3                 |
| BSM                | 13                   | 6611              | 2.0                              | 1-3.4                   | 22                    | 24300             | 0.9                              | 0.6-1.4                 |
| BSCtoC             | 6                    | 5928              | 1.0                              | 0.4-2.2                 | 8                     | 21492             | 0.4                              | 0.2-0.7                 |
| BSC                | 11                   | 6025              | 1.8                              | 0.9-3.3                 | 12                    | 16969             | 0.7                              | 0.4-1.2                 |
| BSS                | 15                   | 9976              | 1.5                              | 0.8-2.5                 | 26                    | 40738             | 0.6                              | 0.4-0.9                 |
| BSHC               | 17                   | 3185              | 5.3                              | 3.1-8.5                 | 15                    | 14337             | 1.0                              | 0.6-1.7                 |
| BSA Total          | 101                  | 46028             | 2.2                              | 1.8-2.7                 | 128                   | 164154            | 0.8                              | 0.7-0.9                 |
| <i>65-69 years</i> |                      |                   |                                  |                         |                       |                   |                                  |                         |
| BSAN               | 3                    | 877               |                                  |                         | 2                     | 5778              |                                  |                         |
| BSM                | 2                    | 316               |                                  |                         | 6                     | 5444              |                                  |                         |
| BSCtoC             | 0                    | 342               |                                  |                         | 1                     | 3820              |                                  |                         |
| BSC                | 1                    | 297               |                                  |                         | 9                     | 3227              |                                  |                         |
| BSS                | 2                    | 532               |                                  |                         | 4                     | 7616              |                                  |                         |
| BSHC               | 0                    | 17                |                                  |                         | 4                     | 2063              |                                  |                         |
| BSA Total          | 8                    | 2381              |                                  |                         | 26                    | 27948             |                                  |                         |

Poisson 95% Confidence Intervals presented

### Comment:

#### Benign open biopsies, last 2 years, women aged 45-49 years

Screening commenced in this age group in July, 2004, and the biennial data cannot be interpreted

#### Benign open biopsies, last 2 years, women aged 50-64 years

For initial screens the BSA benign open biopsy rate was 2.2 per 1,000, which met the expected target of  $\leq 3.5$  per 1000 women screened. There was little variation among services, and the majority of all lead providers all achieved the target (based on point estimates). For subsequent screens the BSA benign open biopsy rate was 0.8 per 1,000 which met the target of  $\leq 1.6$  per 1,000 women screened. There was little variation among services and all lead providers were on target (based on point estimates). Statistical analysis indicates that a few of the differences between providers are significant.

#### Benign open biopsies, last 2 years, women aged 65-69 years

Screening commenced in this age group in July, 2004, and the biennial data cannot be interpreted

### 3. EARLY DETECTION OF DCIS OR INVASIVE BREAST CANCER

#### Description:

The number of women who have breast cancer detected within BSA, expressed as a rate per 1,000 women screened. This is influenced by the incidence of cancer in the population - all other things being equal, the higher the incidence in the background population, the higher the cancer detection rate will be.

#### Target:

Initial (Prevalent) round:  $\geq 6.9$  per 1000 women screened

Subsequent (Incident) round:  $\geq 3.45$  per 1000 women screened

#### 3.a. DCIS and invasive cancer, last 6 months

**Table 3a** Detection rate of DCIS and invasive breast cancer per 1000 women screened

| Lead Provider      | Last 6 Months        |               |                         |                       |               |                         |
|--------------------|----------------------|---------------|-------------------------|-----------------------|---------------|-------------------------|
|                    | Jan 2005 to Jun 2005 |               |                         |                       |               |                         |
|                    | Initial (Prevalent)  |               |                         | Subsequent (Incident) |               |                         |
|                    | Number               | Rate per 1000 | 95% Confidence Interval | Number                | Rate per 1000 | 95% Confidence Interval |
| <b>45-49 years</b> |                      |               |                         |                       |               |                         |
| BSAN               | 12                   | 9.3           | 4.8-16.2                | 0                     | -             | -                       |
| BSM                | 4                    | 2.2           | 0.6-5.6                 | 0                     | -             | -                       |
| BSCtoC             | 4                    | 4.4           | 1.2-11.3                | 0                     | -             | -                       |
| BSC                | 2                    | 4.2           | 0.5-15.1                | 0                     | -             | -                       |
| BSS                | 4                    | 12.7          | 3.5-32.5                | 0                     | -             | -                       |
| BSHC               | 5                    | 4.9           | 1.6-11.3                | 0                     | -             | -                       |
| BSA Total          | 31                   | 5.3           | 3.6-7.5                 | 0                     | -             | -                       |
| <b>50-64 years</b> |                      |               |                         |                       |               |                         |
| BSAN               | 17                   | 6.0           | 3.5-9.5                 | 61                    | 5.5           | 4.2-7.0                 |
| BSM                | 12                   | 7.6           | 3.9-13.3                | 30                    | 5.2           | 3.5-7.4                 |
| BSCtoC             | 11                   | 8.1           | 4.0-14.5                | 26                    | 4.8           | 3.1-7.0                 |
| BSC                | 3                    | 1.7           | 0.4-5.1                 | 25                    | 5.2           | 3.4-7.7                 |
| BSS                | 16                   | 6.1           | 3.5-9.9                 | 59                    | 4.7           | 3.6-6.1                 |
| BSHC               | 3                    | 3.8           | 0.8-11.1                | 15                    | 3.8           | 2.1-6.3                 |
| BSA Total          | 62                   | 5.7           | 4.3-7.3                 | 216                   | 5.0           | 4.3-5.7                 |
| <b>65-69 years</b> |                      |               |                         |                       |               |                         |
| BSAN               | 4                    | 11.3          | 3.1-28.9                | 17                    | 7.7           | 4.5-12.3                |
| BSM                | 0                    | 0.0           | 0.0-24.1                | 19                    | 8.4           | 5.1-13.2                |
| BSCtoC             | 1                    | 8.5           | 0.2-47.2                | 7                     | 4.8           | 1.9-9.9                 |
| BSC                | 4                    | 25.0          | 6.8-64.0                | 14                    | 10.6          | 5.8-17.8                |
| BSS                | 9                    | 33.7          | 15.4-64.0               | 39                    | 8.8           | 6.3-12.1                |
| BSHC               | 1                    | 111.1         | 2.8-619.1               | 11                    | 9.6           | 4.8-17.2                |
| BSA Total          | 19                   | 17.9          | 10.8-27.9               | 107                   | 8.4           | 6.8-10.1                |

Poisson 95% Confidence Intervals presented

#### Comment:

##### DCIS and invasive cancer, last 6 months, women aged 45-49 years

For initial screens the BSA program detection rate of 5.3 per 1,000 for the 6 month was below the target of  $\geq 6.9$  per 1,000, although upper 95% CIs contain the target range. There was variation in overall detection rates across lead providers (though no statistically significant differences), ranging from 2.2 to 12.7 per 1,000. Screening commenced in this age group in July, 2004, and the subsequent screening data cannot be interpreted

##### DCIS and invasive cancer, last 6 months, women aged 50-64 years

For initial screens the BSA program detection rate at 5.7 per 1,000 was below the target ( $\geq 6.9$  per 1000), although the 95%CI contained the target value. There was variation across lead providers, and upper confidence limits contained the target value in most cases. For subsequent screens the BSA program detection rate of 5.0 per 1000 was on target ( $\geq 3.45$  per 1000), and the upper 95% CIs for all services were in the target range. Detection rates are similar to the previous period. Confidence intervals indicates that a few of the differences between providers are significant.

##### DCIS and invasive cancer, last 6 months, women aged 65-69 years

For initial screens, the BSA program detection rate of 17.9 per 1,000 for the 6 month period was above the target of  $\geq 6.9$  per 1,000. Screening commenced in this age group in July, 2004, and the subsequent screening data cannot be interpreted. Detection rates across lead providers ranged from 0.0 to 12.5 per 1,000. Wide confidence intervals are evident due to small numbers of cancers, and no statistically significant differences across lead providers were evident. For subsequent screens the BSA program detection rate of 8.4 per 1,000 was above the target of  $\geq 3.45$  per 1,000. There was little variation across

lead providers, with most providers achieving the target value.

*Description:*

The number of women who have breast cancer detected within BSA, expressed as a rate per 1000 women screened. This is influenced by the Subsequent (Incident) of cancer in the population - all other things being equal, the higher the Subsequent (Incident) in the background population, the higher the cancer detection rate will be.

*Target:*

Initial (Prevalent) round:  $\geq 6.9$  per 1000 women screened

Subsequent (Incident) round:  $\geq 3.45$  per 1000 women screened

**3.b. DCIS and invasive cancer, last 2 years**

**Table 3b** Detection rate of DCIS and invasive breast cancer per 1000 women screened

| Lead Provider      | Last 2 Years         |               |                         |                       |               |                         |
|--------------------|----------------------|---------------|-------------------------|-----------------------|---------------|-------------------------|
|                    | Jul 2003 to Jun 2005 |               |                         |                       |               |                         |
|                    | Initial (Prevalent)  |               |                         | Subsequent (Incident) |               |                         |
|                    | Number               | Rate per 1000 | 95% Confidence Interval | Number                | Rate per 1000 | 95% Confidence Interval |
| <i>45-49 years</i> |                      |               |                         |                       |               |                         |
| BSAN               | 12                   |               |                         | 0                     |               |                         |
| BSM                | 6                    |               |                         | 0                     |               |                         |
| BSCtoC             | 4                    |               |                         | 0                     |               |                         |
| BSC                | 2                    |               |                         | 0                     |               |                         |
| BSS                | 4                    |               |                         | 0                     |               |                         |
| BSHC               | 5                    |               |                         | 0                     |               |                         |
| BSA Total          | 33                   |               |                         | 0                     |               |                         |
| <i>50-64 years</i> |                      |               |                         |                       |               |                         |
| BSAN               | 123                  | 8.6           | 7.1-10.3                | 232                   | 5.0           | 4.4-5.7                 |
| BSM                | 48                   | 7.3           | 5.4-9.6                 | 136                   | 5.6           | 4.7-6.6                 |
| BSCtoC             | 41                   | 6.9           | 5.0-9.4                 | 93                    | 4.3           | 3.5-5.3                 |
| BSC                | 29                   | 4.8           | 3.2-6.9                 | 98                    | 5.8           | 4.7-7.0                 |
| BSS                | 80                   | 8.0           | 6.4-10.0                | 191                   | 4.7           | 4.0-5.4                 |
| BSHC               | 14                   | 4.4           | 2.4-7.4                 | 69                    | 4.8           | 3.7-6.1                 |
| BSA Total          | 335                  | 7.3           | 6.5-8.1                 | 819                   | 5.0           | 4.7-5.3                 |
| <i>65-69 years</i> |                      |               |                         |                       |               |                         |
| BSAN               | 9                    |               |                         | 52                    |               |                         |
| BSM                | 1                    |               |                         | 45                    |               |                         |
| BSCtoC             | 4                    |               |                         | 27                    |               |                         |
| BSC                | 4                    |               |                         | 28                    |               |                         |
| BSS                | 13                   |               |                         | 67                    |               |                         |
| BSHC               | 1                    |               |                         | 17                    |               |                         |
| BSA Total          | 32                   |               |                         | 236                   |               |                         |

Poisson 95% Confidence Intervals presented

Note: Data for women aged 45-49 and 65-69 years represent 12 month period only.

**Comment:**

**DCIS and invasive cancer, last 2 years, women 45-49 years**

Screening commenced in this age group in July, 2004, and the biennial data cannot be interpreted

**DCIS and invasive cancer, last 2 years, women 50-64 years**

For initial screens the BSA program detection rate at 7.3 per 1000 was on target ( $\geq 6.9$  per 1000), although the 95% confidence interval contain values below the target of 6.9 per 1,000. The upper 95% CIs for all lead providers were in the target range. For subsequent screens the BSA program detection rate at 5.0 per 1000 was on target ( $\geq 3.45$  per 1000), and the point estimates for all services were on target. All 95% CI were above target. Detection rates were similar to the previous period. Statistical analysis indicates that a few of the differences between providers are significant.

**DCIS and invasive cancer, last 2 years, women 65-69 years**

Screening commenced in this age group in July, 2004, and the biennial data cannot be interpreted.

### 3.a.1. Summary initial screening

**Table 3a.1** Summary for Initial (Prevalent) screening by Lead Provider

| Lead Provider      | Last 6 Months                                 |                       |                           |  | Last 2 Years                                  |                       |                           |  |
|--------------------|---|-----------------------|---------------------------|--|---|-----------------------|---------------------------|--|
|                    | Jan 2005 to Jun 2005                          |                       |                           |  | Jul 2003 to Jun 2005                          |                       |                           |  |
|                    | Referral to Assessment as % of Women screened | Estimated Specificity | Positive Predictive Value | Detection rate per 1000 women screened | Referral to Assessment as % of Women screened | Estimated Specificity | Positive Predictive Value | Detection rate per 1000 women screened |
| <i>45-49 years</i> |   |                       |                           |  |   |                       |                           |  |
| BSAN               | 7.9%  | 93.8%                 | 11.7%                     | 9.3                                    |   |                       |                           |  |
| BSM                | 9.1%  | 91.4%                 | 2.4%                      | 2.2                                    |   |                       |                           |  |
| BSCtoC             | 6.8%  | 93.6%                 | 6.5%                      | 4.4                                    |   |                       |                           |  |
| BSC                | 10.3%   | 90.3%                 | 4.1%                      | 4.2                                    |   |                       |                           |  |
| BSS                | 10.8%   | 90.4%                 | 11.8%                     | 12.7                                   |   |                       |                           |  |
| BSHC               | 8.7%  | 92.1%                 | 5.6%                      | 4.9                                    |   |                       |                           |  |
| BSA Total          | 8.6%  | 92.2%                 | 6.1%                      | 5.3                                    |   |                       |                           |  |
| <i>50-64 years</i> |   |                       |                           |  |   |                       |                           |  |
| BSAN               | 6.7%  | 94.5%                 | 8.9%                      | 6.0                                    | 7.9%  | 93.5%                 | 10.9%                     | 8.6                                    |
| BSM                | 8.6%  | 92.3%                 | 8.8%                      | 7.6                                    | 9.0%  | 91.8%                 | 8.0%                      | 7.3                                    |
| BSCtoC             | 8.6%  | 92.5%                 | 9.4%                      | 8.1                                    | 7.6%  | 93.3%                 | 9.1%                      | 6.9                                    |
| BSC                | 10.2%   | 90.1%                 | 1.7%                      | 1.7                                    | 11.3%   | 89.3%                 | 4.3%                      | 4.8                                    |
| BSS                | 10.5%   | 90.1%                 | 5.8%                      | 6.1                                    | 10.1%   | 90.7%                 | 8.0%                      | 8.0                                    |
| BSHC               | 7.9%  | 92.7%                 | 4.8%                      | 3.8                                    | 7.9%  | 92.8%                 | 5.6%                      | 4.4                                    |
| BSA Total          | 8.8%  | 92.1%                 | 6.5%                      | 5.7                                    | 8.9%  | 92.0%                 | 8.2%                      | 7.3                                    |
| <i>65-69 years</i> |   |                       |                           |  |   |                       |                           |  |
| BSAN               | 4.5%  | 97.1%                 | 25.0%                     | 11.3                                   |   |                       |                           |  |
| BSM                | 4.6%  | 95.4%                 | 0.0%                      | 0.0                                    |   |                       |                           |  |
| BSCtoC             | 7.6%  | 93.2%                 | 11.1%                     | 8.5                                    |   |                       |                           |  |
| BSC                | 10.0%   | 92.3%                 | 25.0%                     | 25.0                                   |   |                       |                           |  |
| BSS                | 9.4%  | 93.8%                 | 36.0%                     | 33.7                                   |   |                       |                           |  |
| BSHC               | 11.1%   | 100.0%                | 100.0%                    | 111.1                                  |   |                       |                           |  |
| BSA Total          | 7.0%  | 94.9%                 | 25.7%                     | 17.9                                   |   |                       |                           |  |

**Comment:**

This table summarises statistics already considered individually.

### 3.a.2. Summary subsequent screening

**Table 3a.2** Summary for Subsequent (Incident) screening by Lead Provider

| Lead Provider      | Last 6 Months                                 |                       |                           |  | Last 2 Years                                  |                       |                           |  |
|--------------------|---|-----------------------|---------------------------|--|---|-----------------------|---------------------------|--|
|                    | Jan 2005 to Jun 2005                          |                       |                           |  | Jul 2003 to Jun 2005                          |                       |                           |  |
|                    | Referral to Assessment as % of Women screened | Estimated Specificity | Positive Predictive Value | Detection rate per 1000 women screened | Referral to Assessment as % of Women screened | Estimated Specificity | Positive Predictive Value | Detection rate per 1000 women screened |
| <i>45-49 years</i> |   |                       |                           |  |   |                       |                           |  |
| BSAN               | 0.0%  | 0.0%                  | 0.0%                      | 0.0                                    |   |                       |                           |  |
| BSM                | 0.0%  | 0.0%                  | 0.0%                      | 0.0                                    |   |                       |                           |  |
| BSCtoC             | 100.0%  | 0.0%                  | 0.0%                      | 0.0                                    |   |                       |                           |  |
| BSC                | 0.0%  | 100.0%                | 0.0%                      | 0.0                                    |   |                       |                           |  |
| BSS                | 0.0%  | 0.0%                  | 0.0%                      | 0.0                                    |   |                       |                           |  |
| BSHC               | 0.0%  | 100.0%                | 0.0%                      | 0.0                                    |   |                       |                           |  |
| BSA Total          | 16.7%   | 83.3%                 | 0.0%                      | 0.0                                    |   |                       |                           |  |
| <i>50-64 years</i> |   |                       |                           |  |   |                       |                           |  |
| BSAN               | 3.1%  | 97.6%                 | 17.7%                     | 5.5                                    | 3.0%  | 97.6%                 | 16.7%                     | 5.0                                    |
| BSM                | 4.1%  | 96.4%                 | 12.5%                     | 5.2                                    | 4.0%  | 96.6%                 | 13.9%                     | 5.6                                    |
| BSCtoC             | 3.3%  | 97.2%                 | 14.4%                     | 4.8                                    | 2.8%  | 97.7%                 | 15.7%                     | 4.3                                    |
| BSC                | 3.9%  | 96.6%                 | 13.2%                     | 5.2                                    | 3.7%  | 96.9%                 | 15.4%                     | 5.8                                    |
| BSS                | 3.6%  | 96.9%                 | 13.3%                     | 4.7                                    | 3.7%  | 96.8%                 | 12.8%                     | 4.7                                    |
| BSHC               | 1.5%  | 98.9%                 | 25.4%                     | 3.8                                    | 1.9%  | 98.6%                 | 25.7%                     | 4.8                                    |
| BSA Total          | 3.3%  | 97.2%                 | 14.8%                     | 5.0                                    | 3.3%  | 97.3%                 | 15.3%                     | 5.0                                    |
| <i>65-69 years</i> |   |                       |                           |  |   |                       |                           |  |
| BSAN               | 3.6%  | 97.4%                 | 21.3%                     | 7.7                                    |   |                       |                           |  |
| BSM                | 4.8%  | 96.0%                 | 17.4%                     | 8.4                                    |   |                       |                           |  |
| BSCtoC             | 2.5%  | 98.0%                 | 19.4%                     | 4.8                                    |   |                       |                           |  |
| BSC                | 4.5%  | 96.8%                 | 23.7%                     | 10.6                                   |   |                       |                           |  |
| BSS                | 3.9%  | 97.0%                 | 22.8%                     | 8.8                                    |   |                       |                           |  |
| BSHC               | 2.4%  | 98.5%                 | 39.3%                     | 9.6                                    |   |                       |                           |  |
| BSA Total          | 3.8%  | 97.1%                 | 22.2%                     | 8.4                                    |   |                       |                           |  |

Note: Data for women aged 45-49 and 65-69 years represent 12 month period only.

**Comment:**

This table summarises statistics already considered individually.

### 3.a.3. Treatment data completeness, last 2 years

*Description:*

Lead Providers have 9 months to complete treatment data entry for Women referred to treatment.

*Target:*

$\geq 90\%$

**Table 3a2** Treatment Data Completeness

| Lead Provider | Apr 2002 to Mar 2004         |  |   |                                      |
|---------------|------------------------------|--|---|--------------------------------------|
|               | Women Referred for Treatment | Women with Incomplete Staging and Grading Data | Women with Completed Staging and Grading Data | % Staging and Grading Data Completed |
| BSAN          | 391                          | 28   | 363   | 93%                                  |
| BSM           | 183                          | 0  | 183   | 100%                                 |
| BSCtoC        | 131                          | 1  | 130   | 99%                                  |
| BSC           | 135                          | 27   | 108   | 80%                                  |
| BSS           | 277                          | 14   | 263   | 95%                                  |
| BSHC          | 87                           | 1  | 86  | 99%                                  |
| BSA Total     | 1204                         | 71   | 1133  | 94%                                  |

**Comment:**

#### **Treatment data completeness, last 2 years, women 50-64 years**

The overall treatment data completeness was 94%, which was greater than the target of  $\geq 90\%$ . All lead providers achieved the expected target with the exception of BSC.

### 3.b. Invasive cancers <=10mm, women

#### Description:

Rate and proportion of primary invasive breast cancer of diameter <=10mm

#### Target:

Initial (Prevalent) round: >= 25%, which gives a rate of >= 17.3 per 10,000 screens

Subsequent (Incident) round: >= 30%, which gives a rate of >= 10.45 per 10,000 screens

**Table 3b.1** Proportion of Invasive Cancers less than or equal to 10mm

| Lead Provider | Initial (Prevalent)                         |  |  | Incident                         |                                 |   |
|---------------|---|--|--|----------------------------------|---------------------------------|---|
|               | Oct 2002 to Sep 2004                        |  |  | Oct 2002 to Sep 2004             |                                 |   |
|               | Initial (Prevalent) Invasive Cancers <=10mm | Total Initial (Prevalent) Invasive Cancers | Proportion of Invasive Cancers <= 10mm | Incident Invasive Cancers <=10mm | Total Incident Invasive Cancers | Proportion of Incident Invasive Cancers <= 10mm |
| BSAN          | 34  | 109  | 31.2% (22.7-40.8)                      | 55                               | 149                             | 36.9% (29.2-45.2)                               |
| BSM           | 10  | 41   | 24.4% (12.4-40.3)                      | 34                               | 101                             | 33.7% (24.6-43.8)                               |
| BSCtoC        | 5   | 28   | 17.9% (6.1-36.9)                       | 33                               | 84                              | 39.3% (28.8-50.6)                               |
| BSC           | 12  | 32   | 37.5% (21.1-56.3)                      | 19                               | 52                              | 36.5% (23.6-51)                                 |
| BSS           | 15  | 55   | 27.3% (16.1-41)                        | 64                               | 146                             | 43.8% (35.6-52.3)                               |
| BSHC          | 1   | 10   | 10.0% (0.3-44.5)                       | 20                               | 52                              | 38.5% (25.3-53)                                 |
| BSA Total     | 77  | 275  | 28.0% (22.8-33.7)                      | 225                              | 584                             | 38.5% (34.6-42.6)                               |

Exact Binomial 95% Confidence Intervals presented

**Table 3b.2** Invasive Cancers, less than or equal to 10mm, per 10,000 screens

| Lead Provider | Initial (Prevalent)                         |                                   |  |                         | Incident                         |                        |   |                         |
|---------------|---|-----------------------------------|--|-------------------------|----------------------------------|------------------------|---|-------------------------|
|               | Oct 2002 to Sep 2004                        |                                   |  |                         | Oct 2002 to Sep 2004             |                        |   |                         |
|               | Initial (Prevalent) Invasive Cancers <=10mm | Total Initial (Prevalent) Screens | Invasive Cancers <= 10mm, per 10,000 screens | 95% Confidence Interval | Incident Invasive Cancers <=10mm | Total Incident Screens | Incident Invasive Cancers <= 10mm, per 10,000 screens | 95% Confidence Interval |
| BSAN          | 34  | 16209                             | 21.0   | 14.5-29.3               | 55                               | 44310                  | 12.4  | 9.4-16.2                |
| BSM           | 10  | 6869                              | 14.6   | 7.0-26.8                | 34                               | 24262                  | 14.0  | 9.7-19.6                |
| BSCtoC        | 5   | 6358                              | 7.9  | 2.6-18.4                | 33                               | 19892                  | 16.6  | 11.4-23.3               |
| BSC           | 12  | 5627                              | 21.3   | 11.0-37.3               | 19                               | 16134                  | 11.8  | 7.1-18.4                |
| BSS           | 15  | 10594                             | 14.2   | 7.9-23.4                | 64                               | 37940                  | 16.9  | 13.0-21.5               |
| BSHC          | 1   | 3367                              | 3.0  | 0.1-16.5                | 20                               | 13570                  | 14.7  | 9.0-22.8                |
| BSA Total     | 77  | 49024                             | 15.7   | 12.4-19.6               | 225                              | 156108                 | 14.4  | 12.6-16.4               |

Poisson 95% Confidence Intervals presented

#### Comment:

##### 3.b.1. Proportion invasive cancers <=10mm, women aged 50-64 years

For initial screens, the BSA program proportion (28%) was greater than the target of >=25%, although the 95% confidence interval contained the target value. There was variation across lead providers, although upper confidence limits for all lead providers exceeded the target value. For subsequent screens, the overall proportion was 38% which was greater than the target of >=30%. Upper confidence limits for all lead providers exceeded the target value for small cancers detected at subsequent screens.

##### 3.b.2. Invasive cancers <=10mm per 10,000 screens, women aged 50-64 years

For initial screens, the BSA program rate per 10,000 screens of 15.7 was below the target of >=17.3, however upper confidence limits exceeded the target value. Rates across lead providers ranged from 3.0 to 21.3 per 10,000 with all 95% CIs containing the target value of >=17.3 per 10,000 screens, with the exception of BSHC (based on 1 case of cancer). For subsequent screens the overall rate of 14.4 per 10,000 screens was greater than the target value of 10.45. All lead providers reached the target value based on point estimates, however lower 95% CIs were lower than the target value for some lead providers. There was little variation across lead providers.

### 3.c. Invasive cancer <15 mm

#### Description:

Rate and proportion of primary invasive breast cancer of diameter <15mm

#### Target:

Initial (Prevalent) round: > 50%, which gives a rate of > 34.5 per 10,000 screens

Subsequent (Incident) round: > 50%, which gives a rate of > 17.3 per 10,000 screens

There is insufficient data from services for interpretation and 95% CIs are wide. Data collection needs to be improved.

#### 3.c.1. Proportion invasive cancers <15mm, women aged 50-64 years

**Table 3c.1** Proportion of Invasive Cancers less than 15mm

| Lead Provider | Initial (Prevalent)                        |  |                             | Incident                        |                                 |                                      |
|---------------|--|--|-----------------------------|---------------------------------|---------------------------------|--------------------------------------|
|               | Oct 2002 to Sep 2004                       |  |                             | Oct 2002 to Sep 2004            |                                 |                                      |
|               | Initial (Prevalent) Invasive Cancers <15mm | Total Initial (Prevalent) Invasive Cancers | % of Invasive Cancers <15mm | Incident Invasive Cancers <15mm | Total Incident Invasive Cancers | % of Incident Invasive Cancers <15mm |
| BSAN          | 49   | 109  | 45% (35.4-54.8)             | 75                              | 149                             | 50.3% (42-58.6)                      |
| BSM           | 15   | 41   | 36.6% (22.1-53.1)           | 57                              | 101                             | 56.4% (46.2-66.3)                    |
| BSCtoC        | 8  | 28   | 28.6% (13.2-48.7)           | 53                              | 84                              | 63.1% (51.9-73.4)                    |
| BSC           | 16   | 32   | 50% (31.9-68.1)             | 29                              | 52                              | 55.8% (41.3-69.5)                    |
| BSS           | 29   | 55   | 52.7% (38.8-66.4)           | 87                              | 146                             | 59.6% (51.2-67.6)                    |
| BSHC          | 3  | 10   | 30% (6.7-65.3)              | 35                              | 52                              | 67.3% (52.9-79.7)                    |
| BSA Total     | 120  | 275  | 43.6% (37.7-49.7)           | 336                             | 584                             | 57.5% (53.4-61.6)                    |

Exact Binomial 95% Confidence Intervals presented

**Table 3c.2** Invasive Cancers, less than 15mm, per 10,000 screens

| Lead Provider | Initial (Prevalent)                        |                                   |  |                         | Incident                        |                        |   |                         |
|---------------|--|-----------------------------------|--|-------------------------|---------------------------------|------------------------|---|-------------------------|
|               | Oct 2002 to Sep 2004                       |                                   |  |                         | Oct 2002 to Sep 2004            |                        |   |                         |
|               | Initial (Prevalent) Invasive Cancers <15mm | Total Initial (Prevalent) Screens | Invasive Cancers <15mm, per 10,000 screens | 95% Confidence Interval | Incident Invasive Cancers <15mm | Total Incident Screens | Incident Invasive Cancers <15mm, per 10,000 screens | 95% Confidence Interval |
| BSAN          | 49   | 16209                             | 30.2                                       | 22.4-40.0               | 75                              | 44310                  | 16.9  | 13.3-21.2               |
| BSM           | 15   | 6869                              | 21.8                                       | 12.2-36.0               | 57                              | 24262                  | 23.5  | 17.8-30.4               |
| BSCtoC        | 8  | 6358                              | 12.6                                       | 5.4-24.8                | 53                              | 19892                  | 26.6  | 20.0-34.9               |
| BSC           | 16   | 5627                              | 28.4                                       | 16.3-46.2               | 29                              | 16134                  | 18.0  | 12.0-25.8               |
| BSS           | 29   | 10594                             | 27.4                                       | 18.3-39.3               | 87                              | 37940                  | 22.9  | 18.4-28.3               |
| BSHC          | 3  | 3367                              | 8.9  | 1.8-26.0                | 35                              | 13570                  | 25.8  | 18.0-35.9               |
| BSA Total     | 120  | 49024                             | 24.5                                       | 20.3-29.3               | 336                             | 156108                 | 21.5  | 19.3-24.0               |

Poisson 95% Confidence Intervals presented

#### Comment:

##### 3.c.1. Proportion invasive cancers <15mm, women aged 50-64 years

For initial screens, the BSA percentage of 44% was below the target of >50%. Some lead providers were below this target, although upper confidence limits contained the target value for most lead providers. For subsequent screens, the BSA percentage of 58% was above the target of >50%. All lead providers reached the target value, although lower confidence limits contained values below target for some lead providers.

##### 3.c.2. Invasive cancers <15mm per 10,000 screens, women aged 50-64 years

For initial screens, the BSA program rate per 10,000 screens of 24.5 was statistically below the target of >34.5. Rates across lead providers ranged from 8.9 to 30.2 per 10,000 with 95% CIs for 4 of the 6 lead providers encompassing the target value of >34.5 per 10,000 screens. For subsequent screens the BSA program rate of 21.5 per 10,000 screens was statistically higher than the target value of 17.3. All lead providers reached the target value based on point estimates, however lower 95% CIs were lower than the target value for some lead providers. There was little variation across lead providers.

### 3.d. Nodal involvement

*Description:*

The proportion of women with invasive screen detected breast cancer who do not have nodal involvement.

Note: This is calculated as 1 minus the proportion of women with invasive screen detected breast cancer who do have nodal involvement

*Target:*

Initial (Prevalent) round: > 70%

Subsequent (Incident) round: > 75%

### 3.d. Proportion of node negative invasive cancers, women aged 50-64 years

**Table 3d** Invasive Cancers, who do not have nodal involvement

| Lead Provider | Initial (Prevalent)   |  |   | Incident  |                                 |  |
|---------------|---|--|---|---|---------------------------------|--|
|               | Oct 2002 to Sep 2004  |  |   | Oct 2002 to Sep 2004  |                                 |  |
|               | Initial (Prevalent) women with Invasive Cancers who are node positive | Total Initial (Prevalent) Invasive Cancers | % of Initial (Prevalent) Invasive Cancers with no nodal involvement | Subsequent (Incident) women with Invasive Cancers who are node positive | Total Incident Invasive Cancers | % of Incident Invasive Cancers with no nodal involvement |
| BSAN          | 27  | 109  | 75.2% (67.9-81.7)   | 34  | 149                             | 77.2% (71.1-82.6)  |
| BSM           | 15  | 41   | 63.4% (51.2-75.6)   | 25  | 101                             | 75.2% (68.3-82.2)  |
| BSCtoC        | 10  | 28   | 64.3% (50.0-78.6)   | 22  | 84                              | 73.8% (65.5-81.0)  |
| BSC           | 3   | 32   | 90.6% (81.3-96.9)   | 11  | 52                              | 78.8% (69.2-88.5)  |
| BSS           | 17  | 55   | 69.1% (58.2-80.0)   | 27  | 146                             | 81.5% (76.0-87.0)  |
| BSHC          | 2   | 10   | 80.0% (60.0-100.0)  | 13  | 52                              | 75.0% (65.4-84.6)  |
| BSA Total     | 74  | 275  | 73.1% (68.7-77.5)   | 132   | 584                             | 77.4% (74.5-80.1)  |

**Comment:**

### 3.d. Proportion of node negative invasive cancers, women aged 50-64 years

The BSA program proportion for initial screens (73%) was greater than the target value of >70%, although lower confidence limits contained values below the target value. There was variation across the lead providers with percentages ranging from 63% to 91%. The BSA percentage for subsequent screens (77%) was greater than the target value of >75%, but not statistically different from the target, with little variation across lead providers. All lead providers either exceeded the target or were very close to the target for subsequent screens.

### 3.e. DCIS

*Description:*

The percentage of all women with screen detected cancer who are diagnosed as having Ductal Carcinoma in Situ (DCIS) as their primary lesion

*Target:*

10-25% of all cancers detected by the program are DCIS

### 3.e. DCIS, women aged 50-64 years

**Table 3e** Women with DCIS as a percentage of all screen detected cancers

| Lead Provider | Oct 2002 to Sep 2004 |               |                    |
|---------------|----------------------|---------------|--------------------|
|               | DCIS                 | Total Cancers | % of Total Cancers |
| BSAN          | 105                  | 363           | 28.9% (25.1-32.8)  |
| BSM           | 41                   | 183           | 22.4% (17.5-27.3)  |
| BSCtoC        | 17                   | 129           | 13.2% (8.5-18.6)   |
| BSC           | 22                   | 106           | 20.8% (14.2-27.4)  |
| BSS           | 62                   | 263           | 23.6% (19.4-27.8)  |
| BSHC          | 24                   | 86            | 27.9% (19.8-36.0)  |
| BSA Total     | 271                  | 1130          | 24.0% (21.9-26.1)  |

**Comment:**

### 3.e. DCIS, women aged 50-64 years

The BSA percentage for this age group was 24%, which was within the target range of 10-25% although upper confidence intervals contained values outside the target range. Percentages ranged from 13% to 29%, with only one lead provider statistically outside the target range (BSAN).

## 4. TREATMENT

### 4.a. Invasive cancers >1mm having a surgical axillary procedure

*Description:*

Percentage of all women who are operated on for a screen detected invasive cancer, over 1mm in size, who have a surgical axillary procedure

*Target:*

95% of women operated on for invasive cancer over 1mm in size, should normally have a surgical axillary procedure

**Table 4a** Percentage of Invasive Cancers having a surgical axillary procedure

| Lead Provider | Oct 2002 to Sep 2004  |  |   |
|---------------|---|--|---|
|               | Number having a surgical axillary procedure for invasive cancers >1mm | Number having an operation for invasive cancers >1mm | % of Invasive Cancers, >1mm, having a surgical axillary procedure |
| BSAN          | 151   | 176  | 85.8% (79.8-90.6)   |
| BSM           | 100   | 113  | 88.5% (81.1-93.7)   |
| BSCtoC        | 77  | 83   | 92.8% (84.9-97.3)   |
| BSC           | 53  | 53   | 100% (94.5-100)   |
| BSS           | 139   | 143  | 97.2% (93.0-99.2)   |
| BSHC          | 40  | 45   | 88.9% (76.0-96.3)   |
| BSA Total     | 560   | 613  | 91.4% (88.8-93.5)   |

Exact binomial 95% Confidence Intervals presented

**Comment:**

#### 4.a. Invasive cancers >1mm having a surgical axillary procedure, women 50-64 years

The BSA percentage (91%) was slightly below the target of 95%. There was variation across lead providers, with percentages ranging from 86% to 100%, with lower confidence limits below the target value for all lead providers. Only 2 lead providers (BSAN, BSM) were statistically below the target value.

### 4.b. Invasive cancers having single excision

*Description:*

The proportion of women with invasive cancer who have a single excisional breast treatment procedure.

*Target:*

No target

**Table 4b** Proportion of Invasive Cancers having a single excisional breast treatment procedure

| Lead Provider | Oct 2002 to Sep 2004  |   |  |
|---------------|---|---|--|
|               | Number having a single excisional procedure for invasive cancer | Number of invasive cancers having surgical breast procedure | Proportion of Invasive Cancers having a single excisional breast treatment procedure |
| BSAN          | 219   | 254   | 86.2% (82.7-89.8)  |
| BSM           | 120   | 141   | 85.1% (80.1-90.1)  |
| BSCtoC        | 88  | 112   | 78.6% (72.3-84.8)  |
| BSC           | 65  | 78  | 83.3% (75.6-89.7)  |
| BSS           | 174   | 199   | 87.4% (83.4-91)  |
| BSHC          | 51  | 62  | 82.3% (74.2-90.3)  |
| BSA Total     | 717   | 846   | 84.8% (82.7-86.8)  |

**Comment:**

#### 4.b. Invasive cancers having single excision, women aged 50-64 years

The BSA proportion of invasive cancers having a single excision was 84.8%. There was little variation across lead providers.

#### 4.c. DCIS with no axillary dissection

*Description:*

The proportion of women who have surgery for DCIS who do not have an axillary dissection

*Target:*

> 95 %

**Table 4c** Proportion of DCIS women not having axillary dissection

| Lead Provider | Oct 2002 to Sep 2004  |                                |   |
|---------------|---|--------------------------------|---|
|               | Number having surgery for DCIS who do not have an axillary dissection | Number having surgery for DCIS | Proportion of DCIS women not having axillary dissection |
| BSAN          | 82  | 97                             | 84.5% (78.4-90.7)                                       |
| BSM           | 26  | 40                             | 65% (52.5-77.5)   |
| BSCtoC        | 12  | 17                             | 70.6% (52.9-88.2)                                       |
| BSC           | 17  | 22                             | 77.3% (63.6-90.9)                                       |
| BSS           | 51  | 62                             | 82.3% (74.2-90.3)                                       |
| BSHC          | 13  | 24                             | 54.2% (37.5-70.8)                                       |
| BSA Total     | 201   | 262                            | 76.7% (72.5-80.9)                                       |

**Comment:**

#### 4.c. DCIS with no axillary dissection, women 50-64 years

The BSA proportion of DCIS not having an axillary dissection was 76.7%, which was statistically below the target of >95%. All lead providers were below the target value, with percentages ranging from 54% to 85%.

#### 4.e. DCIS having breast conserving surgery

*Description:*

The proportion of women diagnosed with DCIS of pathological diameter  $\leq 20$ mm who have Breast Conserving Surgery (BCS)

*Target:*

The majority of screen-detected DCIS  $\leq 20$ mm are treated by BCS

**Table 4e** Proportion of DCIS having BCS

| Lead Provider | Oct 2002 to Sep 2004                   |   |  |
|---------------|--|---|--|
|               | Number of DCIS $\leq 20$ mm having BCS | Number of DCIS $\leq 20$ mm who are operated on | Proportion of DCIS, $\leq 20$ mm, who have BCS |
| BSAN          | 52                                     | 62  | 83.9% (75.8-91.9)                              |
| BSM           | 17                                     | 22  | 77.3% (63.6-90.9)                              |
| BSCtoC        | 6                                      | 11  | 54.5% (27.3-81.8)                              |
| BSC           | 13                                     | 15  | 86.7% (73.3-100)                               |
| BSS           | 34                                     | 39  | 87.2% (76.9-94.9)                              |
| BSHC          | 7                                      | 9   | 77.8% (55.6-100)                               |
| BSA Total     | 129                                    | 158   | 81.6% (76.6-86.7)                              |

Exact binomial 95% Confidence Intervals presented

**Comment:**

#### 4.e. DCIS having breast conserving surgery, women aged 50-64 years

Overall, the majority (82%) of DCIS cases had breast conserving surgery. All lead providers were above the  $>50\%$  target, although lower confidence limits for BSCtoC contained values below the target.

#### 4.f. Invasive cancers $\leq 20$ mm having breast conserving surgery

*Description:*

The proportion of women diagnosed with Invasive Cancer, without a DCIS component, of pathological diameter  $\leq 20$ mm who have Breast Conserving Surgery (BCS)

*Target:*

The majority of screen-detected cancers  $\leq 20$ mm are treated by BCS

**Table 4f** Proportion of Invasive, without DCIS, having BCS

| Lead Provider | Oct 2002 to Sep 2004  |  |   |
|---------------|---|--|---|
|               | Number of Invasive Cancers, without DCIS, $\leq 20$ mm having BCS | Number of Invasive Cancers, without DCIS, $\leq 20$ mm who are operated on | Proportion of Invasive Cancers, without DCIS, $\leq 20$ mm who have BCS |
| BSAN          | 36  | 50   | 72% (62.0-82.0)   |
| BSM           | 26  | 37   | 70.3% (56.8-81.1)   |
| BSCtoC        | 14  | 23   | 60.9% (43.5-78.3)   |
| BSC           | 14  | 25   | 56% (40.0-72.0)   |
| BSS           | 27  | 43   | 62.8% (51.2-74.4)   |
| BSHC          | 12  | 20   | 60% (40.0-80.0)   |
| BSA Total     | 129   | 198  | 65.2% (59.6-70.7)   |

Exact binomial 95% Confidence Intervals presented

**Comment:**

#### 4.f. Invasive cancers $\leq 20$ mm having breast conserving surgery, women aged 50-64 years

The majority (65%) of DCIS had breast conserving surgery. Point estimates for all lead providers were above target, although lower confidence limits for some lead providers contained values below the target.

#### 4.g. Proportion of invasive cancers having radiotherapy

*Description:*

The proportion of women diagnosed with Invasive Cancer, who have Breast Conserving Surgery (BCS), who go on to have Radiotherapy

*Target:*

$\geq 95\%$

**Table 4g** Proportion of Invasive, having BCS and having Radiotherapy

| Lead Provider | Oct 2002 to Sep 2004  |  |   |
|---------------|---|--|---|
|               | Number of Invasive Cancers, having BCS, who have Radiotherapy | Number of Invasive Cancers, having BCS | Proportion of Invasive Cancers, having BCS, who have Radiotherapy |
| BSAN          | 143   | 163                                    | 87.7% (81.7-92.3)   |
| BSM           | 66  | 93                                     | 71% (60.6-79.9)   |
| BSCtoC        | 60  | 60                                     | 100% (95.1-100)   |
| BSC           | 32  | 35                                     | 91.4% (76.9-98.2)   |
| BSS           | 104   | 109                                    | 95.4% (89.6-98.5)   |
| BSHC          | 30  | 38                                     | 78.9% (62.7-90.5)   |
| BSA Total     | 435   | 498                                    | 87.3% (84.1-90.1)   |

Exact binomial 95% Confidence Intervals presented

**Comment:**

#### 4.g. Proportion of invasive cancers having radiotherapy, women aged 50-64 years

The BSA proportion of women with invasive cancer who had radiotherapy was 87.3%, which was slightly below the target of  $\geq 95\%$ . There was variation across lead providers, with confidence intervals indicating some significant differences.

#### 4.h. Proportion of DCIS having radiotherapy

*Description:*

The proportion of women diagnosed solely with DCIS, who have Breast Conserving Surgery (BCS), who go on to have Radiotherapy

*Target:*

No target

**Table 4h** Proportion of DCIS, having BCS and having Radiotherapy

| Lead Provider | Oct 2002 to Sep 2004                              |                            |   |
|---------------|---|----------------------------|---|
|               | Number of DCIS, having BCS, who have Radiotherapy | Number of DCIS, having BCS | Proportion of DCIS, having BCS, who have Radiotherapy |
| BSAN          | 39  | 78                         | 50% (38.5-61.5)                                       |
| BSM           | 15  | 24                         | 62.5% (40.6-81.2)                                     |
| BSCtoC        | 2   | 7                          | 28.6% (3.7-71)  |
| BSC           | 4   | 14                         | 28.6% (8.4-58.1)                                      |
| BSS           | 19  | 39                         | 48.7% (32.4-65.2)                                     |
| BSHC          | 9   | 11                         | 81.8% (48.2-97.7)                                     |
| BSA Total     | 88  | 173                        | 50.9% (43.2-58.5)                                     |

Exact binomial 95% Confidence Intervals presented

**Comment:**

#### Proportion of DCIS having radiotherapy

Overall 47.4% of women diagnosed with DCIS only go on to have breast conserving surgery. There was variation in this indicator by lead provider, ranging from 19% to 89%, indicative of small underlying numbers.

#### 4.i. Proportion of invasive cancers having chemotherapy

*Description:*

The proportion of women diagnosed with Invasive Cancer who have Chemotherapy, reported by disease character groups

*Target:*

No target

**Table 4i1** Group 1, Node positive, ER/PR negative

| Lead Provider | Oct 2002 to Sep 2004                           |  |   |
|---------------|--|--|---|
|               | Number of Invasive Cancers, in Group 1, having | Number of Invasive Cancers, in Group 1 | Proportion of Invasive Cancers, in Group 1, |
| BSAN          | 7  | 9                                      | 77.8% (55.6-100)                            |
| BSM           | 2  | 3                                      | 66.7% (33.3-100)                            |
| BSCtoC        | 3  | 5                                      | 60.0% (20.0-100)                            |
| BSC           | 3  | 4                                      | 75.0% (25.0-100)                            |
| BSS           | 12   | 13                                     | 92.3% (76.9-100)                            |
| BSHC          | 1  | 1                                      | 100% (5.0-100)                              |
| BSA Total     | 28   | 35                                     | 80.0% (68.6-91.4)                           |

Exact binomial 95% Confidence Intervals presented

**Table 4i2** Group 2, Node negative, high risk, and ER/PR negative

| Lead Provider | Oct 2002 to Sep 2004                           |  |   |
|---------------|--|--|---|
|               | Number of Invasive Cancers, in Group 2, having | Number of Invasive Cancers, in Group 2 | Proportion of Invasive Cancers, in Group 2, |
| BSAN          | 14   | 19                                     | 73.7% (57.9-89.5)                           |
| BSM           | 2  | 5                                      | 40.0% (0.0-80.0)                            |
| BSCtoC        | 3  | 9                                      | 33.3% (11.1-55.6)                           |
| BSC           | 2  | 11                                     | 18.2% (0.0-36.4)                            |
| BSS           | 4  | 22                                     | 18.2% (4.5-31.8)                            |
| BSHC          | 1  | 4                                      | 25.0% (0.0-75.0)                            |
| BSA Total     | 26   | 70                                     | 37.1% (27.1-47.1)                           |

Exact binomial 95% Confidence Intervals presented

**Table 4i3** Group 3, Node positive, either ER or PR positive

| Lead Provider | Oct 2002 to Sep 2004                           |  |   |
|---------------|--|--|---|
|               | Number of Invasive Cancers, in Group 3, having | Number of Invasive Cancers, in Group 3 | Proportion of Invasive Cancers, in Group 3, |
| BSAN          | 11   | 30                                     | 36.7% (23.3-50.0)                           |
| BSM           | 7  | 11                                     | 63.6% (36.4-90.9)                           |
| BSCtoC        | 12   | 23                                     | 52.2% (34.8-69.6)                           |
| BSC           | 12   | 14                                     | 85.7% (71.4-100)                            |
| BSS           | 19   | 40                                     | 47.5% (35.0-60.0)                           |
| BSHC          | 8  | 16                                     | 50.0% (31.3-68.8)                           |
| BSA Total     | 69   | 134                                    | 51.5% (44.0-58.2)                           |

Exact binomial 95% Confidence Intervals presented

**Table 4i4** Group 4, Node negative, high risk, either ER or PR positive

| Lead Provider | Oct 2002 to Sep 2004                           |  |   |
|---------------|--|--|---|
|               | Number of Invasive Cancers, in Group 4, having | Number of Invasive Cancers, in Group 4 | Proportion of Invasive Cancers, in Group 4, |
| BSAN          | 0  | 57                                     | 0.0% (0.0-5.1)                              |
| BSM           | 3  | 12                                     | 25.0% (8.3-50.0)                            |
| BSCtoC        | 3  | 32                                     | 9.4% (3.1-18.8)                             |
| BSC           | 0  | 31                                     | 0.0% (0.0-9.2)                              |
| BSS           | 4  | 80                                     | 5.0% (1.3-8.8)                              |
| BSHC          | 1  | 20                                     | 5.0% (0.0-15.0)                             |
| BSA Total     | 11   | 232                                    | 4.7% (2.6-7.3)                              |

Exact binomial 95% Confidence Intervals presented

#### 4.j. Proportion of invasive cancers having endocrine therapy

*Description:*

The proportion of women diagnosed with Invasive Cancer who have Endocrine therapy reported by disease character groups

*Target:*

No target

**Table 4j1** Group 1, Node positive and either ER or PR positive

| Lead Provider | Oct 2002 to Sep 2004                                     |  |   |
|---------------|--|--|---|
|               | Number of Invasive Cancers, in Group 1, having Endocrine | Number of Invasive Cancers, in Group 1 | Proportion of Invasive Cancers, in Group 1, |
| BSAN          | 28   | 30                                     | 93.3% (86.7-100)                            |
| BSM           | 9  | 11                                     | 81.8% (63.6-100)                            |
| BSCtoC        | 23   | 23                                     | 100% (87.8-100)                             |
| BSC           | 13   | 14                                     | 92.9% (78.6-100)                            |
| BSS           | 36   | 40                                     | 90.0% (82.5-97.5)                           |
| BSHC          | 12   | 16                                     | 75.0% (56.3-93.8)                           |
| BSA Total     | 121  | 134                                    | 90.3% (85.8-94.0)                           |

**Table 4j2** Group 2, Node negative, high risk, and either ER or PR positive

| Lead Provider | Oct 2002 to Sep 2004                                     |  |   |
|---------------|--|--|---|
|               | Number of Invasive Cancers, in Group 2, having Endocrine | Number of Invasive Cancers, in Group 2 | Proportion of Invasive Cancers, in Group 2, |
| BSAN          | 38   | 57                                     | 66.7% (56.1-77.2)                           |
| BSM           | 8  | 12                                     | 66.7% (41.7-91.7)                           |
| BSCtoC        | 27   | 32                                     | 84.4% (71.9-93.8)                           |
| BSC           | 29   | 31                                     | 93.5% (87.1-100)                            |
| BSS           | 56   | 80                                     | 70.0% (61.3-78.8)                           |
| BSHC          | 12   | 20                                     | 60.0% (40.0-80.0)                           |
| BSA Total     | 170  | 232                                    | 73.3% (68.5-78.0)                           |

**Table 4j3** Group 3, Node positive, low risk and either ER or PR positive

| Lead Provider | Oct 2002 to Sep 2004                                     |  |   |
|---------------|--|--|---|
|               | Number of Invasive Cancers, in Group 3, having Endocrine | Number of Invasive Cancers, in Group 3 | Proportion of Invasive Cancers, in Group 3, |
| BSAN          | 47   | 106                                    | 44.3% (36.8-51.9)                           |
| BSM           | 21   | 26                                     | 80.8% (69.2-92.3)                           |
| BSCtoC        | 50   | 62                                     | 80.6% (72.6-88.7)                           |
| BSC           | 54   | 63                                     | 85.7% (77.8-92.1)                           |
| BSS           | 85   | 138                                    | 61.6% (55.1-68.1)                           |
| BSHC          | 20   | 34                                     | 58.8% (44.1-73.5)                           |
| BSA Total     | 277  | 429                                    | 64.6% (60.8-68.3)                           |

## 5. PROVISION OF AN APPROPRIATE AND ACCEPTABLE SERVICE

### 5.a. Time taken for provision of screening results

#### Description:

The time since screening that it takes for a woman to be sent the results of her mammogram

#### Target:

95% notified within 10 working days

**Table 5a** Percentage of women notified of screening results within 10 working days

| Lead Provider      | Last 6 Months                     |                          |                                   | Last 2 Years                      |                          |                                   |
|--------------------|-----------------------------------|--------------------------|-----------------------------------|-----------------------------------|--------------------------|-----------------------------------|
|                    | Jan 2005 to Jun 2005              |                          |                                   | Jul 2003 to Jun 2005              |                          |                                   |
|                    | # notified within 10 working days | Number of Women Screened | % notified within 10 working days | # notified within 10 working days | Number of Women Screened | % notified within 10 working days |
| <b>45-49 years</b> |                                   |                          |                                   |                                   |                          |                                   |
| BSAN               | 924                               | 1297                     | 71.2% (68.7-73.7)                 | 976                               | 1352                     |                                   |
| BSM                | 1718                              | 1842                     | 93.3% (92.0-94.4)                 | 1803                              | 1948                     |                                   |
| BSCtoC             | 883                               | 909                      | 97.1% (95.8-98.1)                 | 887                               | 913                      |                                   |
| BSC                | 87                                | 479                      | 18.2% (14.8-21.9)                 | 126                               | 523                      |                                   |
| BSS                | 304                               | 315                      | 96.5% (93.8-98.2)                 | 306                               | 317                      |                                   |
| BSHC               | 865                               | 1033                     | 83.7% (81.3-85.9)                 | 1276                              | 1463                     |                                   |
| BSA Total          | 4781                              | 5875                     | 81.4% (80.4-82.4)                 | 5374                              | 6516                     |                                   |
| <b>50-64 years</b> |                                   |                          |                                   |                                   |                          |                                   |
| BSAN               | 10385                             | 13975                    | 74.3% (73.6-75.0)                 | 55558                             | 60621                    | 91.6% (91.4-91.9)                 |
| BSM                | 7051                              | 7377                     | 95.6% (95.1-96.0)                 | 29539                             | 30911                    | 95.6% (95.3-95.8)                 |
| BSCtoC             | 6647                              | 6774                     | 98.1% (97.8-98.4)                 | 27227                             | 27420                    | 99.3% (99.2-99.4)                 |
| BSC                | 2079                              | 6527                     | 31.9% (30.7-33.0)                 | 17505                             | 22994                    | 76.1% (75.6-76.7)                 |
| BSS                | 15040                             | 15120                    | 99.5% (99.3-99.6)                 | 50432                             | 50714                    | 99.4% (99.4-99.5)                 |
| BSHC               | 4358                              | 4738                     | 92.0% (91.2-92.7)                 | 16207                             | 17522                    | 92.5% (92.1-92.9)                 |
| BSA Total          | 45560                             | 54511                    | 83.6% (83.3-83.9)                 | 196468                            | 210182                   | 93.5% (93.4-93.6)                 |
| <b>65-69 years</b> |                                   |                          |                                   |                                   |                          |                                   |
| BSAN               | 1912                              | 2575                     | 74.3% (72.8-75.7)                 | 5876                              | 6655                     |                                   |
| BSM                | 2332                              | 2405                     | 97% (96.4-97.5)                   | 5494                              | 5760                     |                                   |
| BSCtoC             | 1540                              | 1570                     | 98.1% (97.5-98.7)                 | 4123                              | 4162                     |                                   |
| BSC                | 534                               | 1478                     | 36.1% (34.1-38.2)                 | 2417                              | 3524                     |                                   |
| BSS                | 4665                              | 4685                     | 99.6% (99.4-99.7)                 | 8112                              | 8148                     |                                   |
| BSHC               | 1051                              | 1153                     | 91.2% (89.8-92.5)                 | 1924                              | 2080                     |                                   |
| BSA Total          | 12034                             | 13866                    | 86.8% (86.3-87.3)                 | 27946                             | 30329                    |                                   |

Exact binomial 95% Confidence Intervals presented

#### Comment:

##### Time taken for provision of screening results, women aged 45-49 years

The BSA proportion of women notified of results within 10 working days was 81.4% for the 6 month period, which was statistically below the target of 95%. There was variation across lead providers, with notably lower percentages for BSAN (71.2%) and BSC (18.2%). Screening commenced in this age group in July 2004, and the biennial data cannot be interpreted.

##### Time taken for provision of screening results, women aged 50-64 years

The BSA program proportion of women notified of screening results within 10 working days for the last 6 months (83.6%) and last 2 years (93.5%) was statistically below the target of 95%. There was little variation across lead providers, with the exception of BSC, which was statistically below other lead providers for both the 6 month and biennial rate.

##### Time taken for provision of screening results, women aged 65-69 years

The BSA program proportion of women notified within 10 working days was 86.8% for the last 6 months, which was statistically below the target of 95%. There was little variation across lead providers, with the exception of BSAN (74.3%) and BSC (36.1%) who were statistically below other lead providers on this indicator.

**5.b. Time taken from screening visit to first offer of an assessment**

*Description:*

The time between screening and the earliest appointment date the woman is offered for assessment. In some cases this date may not coincide with the actual date of assessment due to the fact that many women arrange for a time that suits them better.

*Target:*

90% offered an assessment appointment within 15 working days

**Table 5b** Percentage of Women offered 1st assessment appointment within 15 working days

| Lead Provider      | Last 6 Months                               |                             |   | Last 2 Years                                |                             |   |
|--------------------|---|-----------------------------|---|---|-----------------------------|---|
|                    | Jan 2005 to Jun 2005                        |                             |   | Jul 2003 to Jun 2005                        |                             |   |
|                    | # offered assessment within 14 working days | Number Referred to Assessed | % offered apptment within 15 working days | # offered assessment within 14 working days | Number Referred to Assessed | % offered apptment within 15 working days |
| <b>45-49 years</b> |   |                             |   |   |                             |   |
| BSAN               | 73  | 103                         | 70.9% (64.2-78.3)                         | 76  | 106                         |   |
| BSM                | 140   | 167                         | 83.8% (78.2-87.2)                         | 148   | 179                         |   |
| BSCtoC             | 41  | 63                          | 65.1% (55.6-74.6)                         | 41  | 63                          |   |
| BSC                | 12  | 49                          | 24.5% (21.8-43.6)                         | 18  | 55                          |   |
| BSS                | 26  | 34                          | 76.5% (64.7-88.2)                         | 26  | 34                          |   |
| BSHC               | 55  | 90                          | 61.1% (61.7-75.7)                         | 79  | 115                         |   |
| BSA Total          | 347   | 506                         | 68.6% (67-73.6)                           | 388   | 552                         |   |
| <b>50-64 years</b> |   |                             |   |   |                             |   |
| BSAN               | 400   | 536                         | 74.6% (71.5-77.6)                         | 2113  | 2517                        | 83.9% (82.8-85.1)                         |
| BSM                | 313   | 376                         | 83.2% (80.1-86.4)                         | 1284  | 1576                        | 81.5% (79.8-83.1)                         |
| BSCtoC             | 224   | 298                         | 75.2% (71.1-79.2)                         | 880   | 1045                        | 84.2% (82.3-86.0)                         |
| BSC                | 132   | 365                         | 36.2% (32.1-40.3)                         | 971   | 1317                        | 73.7% (71.8-75.7)                         |
| BSS                | 685   | 720                         | 95.1% (93.8-96.4)                         | 2380  | 2491                        | 95.5% (94.9-96.2)                         |
| BSHC               | 82  | 121                         | 67.8% (60.3-74.4)                         | 353   | 519                         | 68.0% (64.5-71.3)                         |
| BSA Total          | 1836  | 2416                        | 76.0% (74.5-77.4)                         | 7981  | 9465                        | 84.3% (83.7-84.9)                         |
| <b>65-69 years</b> |   |                             |   |   |                             |   |
| BSAN               | 78  | 96                          | 81.3% (75.0-87.5)                         | 207   | 237                         |   |
| BSM                | 101   | 116                         | 87.1% (81.9-92.2)                         | 234   | 285                         |   |
| BSCtoC             | 33  | 45                          | 73.3% (62.2-84.4)                         | 107   | 127                         |   |
| BSC                | 26  | 75                          | 34.7% (25.3-44.0)                         | 108   | 171                         |   |
| BSS                | 190   | 196                         | 96.9% (94.9-99.0)                         | 329   | 339                         |   |
| BSHC               | 23  | 29                          | 79.3% (65.5-89.7)                         | 34  | 48                          |   |
| BSA Total          | 451   | 557                         | 81.0% (78.3-83.7)                         | 1019  | 1207                        |   |

Exact binomial 95% Confidence Intervals presented

**Time taken from screening visit to first offer of an assessment, women aged 45-49 years**

The BSA program proportion for the last 6 months was 68.6%, statistically below the target of 90%. There was variation across lead providers, ranging from 24.5% to 83.8% with all lead providers below the target value. Screening commenced in this age group in July, 2004, and the biennial data cannot be interpreted.

**Time taken from screening visit to first offer of an assessment, women aged 50-64 years**

For the last 6 months and last 2 years the BSA program percentage of women offered a first assessment appointment within 15 working days was 76.0% and 84.3% respectively which was statistically below the target of 90%. 5 of the 6 lead providers were below target. The biennial results are similar to the previous 6 month reporting period.

**Time taken from screening visit to first offer of an assessment, women aged 65-69 years**

The BSA program proportion for the last 6 months was 81.0% which was statistically below the target value of 90%. Half of the lead providers were statistically below the target value of 90%. Screening commenced in this age group in July, 2004, and the biennial data cannot be interpreted.

### 5.c. Time taken from assessment to final diagnostic biopsy

#### Description:

The time between first level assessment and the final assessment procedure producing a diagnosis

#### Target:

At least 90% of women requiring needle biopsy have that procedure completed within five working days of their assessment

At least 90% of women requiring open biopsy should have this performed within 15 working days of being notified of the need for this operation

#### 5.c.1. Women receiving Needle Biopsy within 5 working days of assessment

**Table 5c.1** Percentage of women receiving Needle Biopsy within 5 work days of assessment.

| Lead Provider      | Last 6 Months  |                            |   | Last 2 Years   |                            |   |
|--------------------|--|----------------------------|---|--|----------------------------|---|
|                    | Jan 2005 to Jun 2005                                   |                            |   | Jul 2003 to Jun 2005                                   |                            |   |
|                    | Women having needle biopsy within 7 days of assessment | Women having Needle Biopsy | % receiving Needle Biopsy within 7 days | Women having needle biopsy within 7 days of assessment | Women having Needle Biopsy | % receiving Needle Biopsy within 7 days |
| <b>45-49 years</b> |  |                            |   |  |                            |   |
| BSAN               | 40   | 44                         | 90.9% (84.1-97.7)                       | 41   | 45                         |   |
| BSM                | 44   | 54                         | 81.5% (72.2-88.9)                       | 47   | 58                         |   |
| BSCtoC             | 21   | 21                         | 100% (86.7-100)                         | 21   | 21                         |   |
| BSC                | 19   | 21                         | 90.5% (81.0-100)                        | 22   | 25                         |   |
| BSS                | 5  | 6                          | 83.3% (50.0-100)                        | 5  | 6                          |   |
| BSHC               | 19   | 19                         | 100% (85.4-100)                         | 25   | 25                         |   |
| BSA Total          | 148  | 165                        | 89.7% (85.5-93.3)                       | 161  | 180                        |   |
| <b>50-64 years</b> |  |                            |   |  |                            |   |
| BSAN               | 180  | 207                        | 87.0% (83.1-90.8)                       | 973  | 1135                       | 85.7% (84.0-87.4)                       |
| BSM                | 117  | 130                        | 90.0% (85.4-93.8)                       | 478  | 554                        | 86.3% (83.8-88.6)                       |
| BSCtoC             | 99   | 106                        | 93.4% (89.6-97.2)                       | 306  | 357                        | 85.7% (82.6-88.8)                       |
| BSC                | 100  | 113                        | 88.5% (83.2-92.9)                       | 381  | 408                        | 93.4% (91.4-95.3)                       |
| BSS                | 127  | 144                        | 88.2% (83.3-92.4)                       | 671  | 810                        | 82.8% (80.6-84.9)                       |
| BSHC               | 33   | 35                         | 94.3% (88.6-100)                        | 168  | 180                        | 93.3% (90.0-96.1)                       |
| BSA Total          | 656  | 735                        | 89.3% (87.3-91.2)                       | 2977   | 3444                       | 86.4% (85.5-87.4)                       |
| <b>65-69 years</b> |  |                            |   |  |                            |   |
| BSAN               | 39   | 44                         | 88.6% (79.5-95.5)                       | 105  | 118                        |   |
| BSM                | 36   | 41                         | 87.8% (78.0-95.1)                       | 94   | 106                        |   |
| BSCtoC             | 16   | 18                         | 88.9% (77.8-100)                        | 48   | 56                         |   |
| BSC                | 26   | 27                         | 96.3% (88.9-100)                        | 65   | 68                         |   |
| BSS                | 49   | 57                         | 86.0% (78.9-93.0)                       | 102  | 117                        |   |
| BSHC               | 18   | 18                         | 100% (84.7-100)                         | 25   | 26                         |   |
| BSA Total          | 184  | 205                        | 89.8% (86.3-93.2)                       | 439  | 491                        |   |

Exact binomial 95% Confidence Intervals presented

#### Comment:

##### Women receiving Needle Biopsy within 5 working days of assessment, women aged 45-49 years

The BSA program percentage of women receiving a needle biopsy within 5 working days (of all those who received a needle biopsy in the 6 month period) was 89.7%, which approached the target value of 90%. Percentages ranged from 81.5% to 100.0% across lead providers, with 4 out of 6 achieving the target although lower confidence limits contained values below the target. Screening commenced in this age group in July, 2004, and the biennial data cannot be interpreted.

##### Women receiving Needle Biopsy within 5 working days of assessment, women aged 50-64 years

For the last 6 months the BSA program percentage of women receiving a needle biopsy within 5 working days (of all those who receive a needle biopsy) was 89.3% which approached the target value of 90%. The BSA biennial percentage was 86.4% which was statistically below the target of 90%. All but 2 lead providers (BSC, BSHC) were statistically below target.

##### Women receiving Needle Biopsy within 5 working days of assessment, women aged 65-69 years

The BSA program percentage of women receiving a needle biopsy within 5 working days was 89.8% for the 6 month period, which approached the target value of 90%. Percentages across lead providers ranged from 86.0% to 100% with upper confidence limits of all lead providers containing values above the target. Screening commenced in this age group in July, 2004, and the biennial data cannot be interpreted.

### 5.c.2. Women having Open Biopsy within 15 working days

**Table 5.c.2** Percentage of women having Open Biopsy procedure within 15 working days

| Lead Provider      | Last 6 Months  |                          |  | Last 2 Years   |                          |  |
|--------------------|--|--------------------------|--|--|--------------------------|--|
|                    | Jan 2005 to Jun 2005   |                          |  | Jul 2003 to Jun 2005   |                          |  |
|                    | Women having Open Biopsy within 15 work days of notification | Women having Open Biopsy | % having Open Biopsy within 15 work days of notification | Women having Open Biopsy within 15 work days of notification | Women having Open Biopsy | % having Open Biopsy within 15 work days of notification |
| <i>45-49 years</i> |  |                          |  |  |                          |  |
| BSAN               | 4  | 4                        |  | 5  | 5                        |  |
| BSM                | 1  | 4                        |  | 1  | 4                        |  |
| BSCtoC             | 0  | 0                        |  | 0  | 0                        |  |
| BSC                | 3  | 4                        |  | 3  | 4                        |  |
| BSS                | 0  | 0                        |  | 0  | 0                        |  |
| BSHC               | 4  | 5                        |  | 5  | 7                        |  |
| BSA Total          | 12   | 17                       | 70.6% (52.9-88.2)  | 14   | 20                       |  |
| <i>50-64 years</i> |  |                          |  |  |                          |  |
| BSAN               | 12   | 15                       | 80.0% (60.0-93.3)  | 98   | 110                      | 89.1% (83.6-93.6)  |
| BSM                | 2  | 5                        | 40.0% (0.0-80.0)   | 20   | 44                       | 45.5% (34.1-56.8)  |
| BSCtoC             | 1  | 5                        | 20.0% (0.0-60.0)   | 6  | 19                       | 31.6% (15.8-47.4)  |
| BSC                | 7  | 12                       | 58.3% (33.3-83.3)  | 33   | 45                       | 73.3% (62.2-84.4)  |
| BSS                | 7  | 8                        | 87.5% (62.5-100)   | 53   | 58                       | 91.4% (84.5-96.6)  |
| BSHC               | 6  | 7                        | 85.7% (57.1-100)   | 27   | 50                       | 54.0% (42.0-66.0)  |
| BSA Total          | 35   | 52                       | 67.3% (55.8-76.9)  | 237  | 326                      | 72.7% (68.7-76.7)  |
| <i>65-69 years</i> |  |                          |  |  |                          |  |
| BSAN               | 2  | 2                        |  | 10   | 11                       |  |
| BSM                | 1  | 4                        |  | 1  | 8                        |  |
| BSCtoC             | 0  | 1                        |  | 0  | 1                        |  |
| BSC                | 4  | 4                        |  | 12   | 15                       |  |
| BSS                | 4  | 5                        |  | 9  | 12                       |  |
| BSHC               | 0  | 1                        |  | 4  | 8                        |  |
| BSA Total          | 11   | 17                       | 64.7% (47.1-82.4)  | 36   | 55                       |  |

Exact binomial 95% Confidence Intervals presented

**Comment:**

**Women having Open Biopsy within 15 working days, women aged 45-49 years**

The BSA program percentage of women having a biopsy within 15 days (of all women requiring an open biopsy) was 71%, which significantly below the 90% target. Numbers across lead providers are too small to interpret appropriately. Screening commenced in this age group in July, 2004, and the biennial data cannot be interpreted.

**Women having Open Biopsy within 15 working days, women aged 50-64 years**

For the last 6 months and last 2 years the BSA program percentage of women having an open biopsy within 15 working days (of all those having an open biopsy) was 67% and 73% respectively. These were both statistically below the target of 90%. All but 2 lead providers were statistically below the target value for the biennial indicator.

**Women having Open Biopsy within 15 working days, women aged 65-69 years**

The BSA program percentage of women having a biopsy within 15 days (of all women requiring an open biopsy) was 65%, which was statistically below the 90% target. Numbers across lead providers are too small to interpret appropriately. Screening commenced in this age group in July, 2004, and the biennial data cannot be interpreted.

**5.d. Time taken from final diagnostic biopsy to reporting assessment results**

*Description:*

The time taken from the final biopsy procedure to reporting the diagnosis to the women

*Target:*

Results reported to at least 90% of women within seven days of final diagnostic biopsy.

**Table 5d** Percentage of Women receiving final diagnostic biopsy results within 5 working days

| Lead Provider      | Last 6 Months  |                                |   | Last 2 Years   |                                |   |
|--------------------|--|--------------------------------|---|--|--------------------------------|---|
|                    | Jan 2005 to Jun 2005                                       |                                |   | Jul 2003 to Jun 2005                                       |                                |   |
|                    | # with results reported within 5 work days of final biopsy | # with final diagnostic biopsy | % receiving final biopsy results within 5 work days | # with results reported within 5 work days of final biopsy | # with final diagnostic biopsy | % receiving final biopsy results within 5 work days |
| <i>45-49 years</i> |  |                                |   |  |                                |   |
| BSAN               | 32   | 44                             | 72.7% (61.4-84.1)                                   | 34   | 46                             |   |
| BSM                | 34   | 53                             | 64.2% (52.8-75.5)                                   | 38   | 57                             |   |
| BSCtoC             | 20   | 21                             | 95.2% (85.7-100)                                    | 20   | 21                             |   |
| BSC                | 19   | 21                             | 90.5% (81.0-100)                                    | 23   | 25                             |   |
| BSS                | 9  | 10                             | 90.0% (70.0-100)                                    | 9  | 10                             |   |
| BSHC               | 17   | 20                             | 85.0% (70.0-95.0)                                   | 22   | 27                             |   |
| BSA Total          | 131  | 169                            | 77.5% (72.2-82.8)                                   | 146  | 186                            |   |
| <i>50-64 years</i> |  |                                |   |  |                                |   |
| BSAN               | 157  | 209                            | 75.1% (70.3-79.9)                                   | 977  | 1146                           | 85.3% (83.5-87.0)                                   |
| BSM                | 106  | 129                            | 82.2% (76.7-87.6)                                   | 436  | 552                            | 79.0% (76.1-81.9)                                   |
| BSCtoC             | 91   | 107                            | 85.0% (79.4-90.7)                                   | 318  | 365                            | 87.1% (84.1-89.9)                                   |
| BSC                | 94   | 113                            | 83.2% (77.0-88.5)                                   | 367  | 409                            | 89.7% (87.3-92.2)                                   |
| BSS                | 219  | 224                            | 97.8% (96.0-99.1)                                   | 865  | 891                            | 97.1% (96.1-98.0)                                   |
| BSHC               | 29   | 37                             | 78.4% (67.6-89.2)                                   | 169  | 197                            | 85.8% (81.7-89.8)                                   |
| BSA Total          | 696  | 819                            | 85.0% (82.9-87.1)                                   | 3132   | 3560                           | 88.0% (87.1-88.9)                                   |
| <i>65-69 years</i> |  |                                |   |  |                                |   |
| BSAN               | 38   | 44                             | 86.4% (77.3-93.2)                                   | 97   | 120                            |   |
| BSM                | 34   | 41                             | 82.9% (73.2-92.7)                                   | 86   | 106                            |   |
| BSCtoC             | 18   | 18                             | 100% (84.7-100)                                     | 51   | 56                             |   |
| BSC                | 18   | 27                             | 66.7% (51.9-81.5)                                   | 54   | 69                             |   |
| BSS                | 84   | 85                             | 98.8% (96.5-100)                                    | 141  | 145                            |   |
| BSHC               | 17   | 18                             | 94.4% (83.3-100)                                    | 27   | 30                             |   |
| BSA Total          | 209  | 233                            | 89.7% (86.3-92.7)                                   | 456  | 526                            |   |

Exact binomial 95% Confidence Intervals presented

**Comment:**

**Time taken from final diagnostic biopsy to reporting assessment results, women aged 45-49 years**

The BSA percentage of women receiving final diagnostic biopsy results within 5 working days was 77.5% which was statistically below the 90% target value. Across lead providers, 4 of the 6 services either made or approached the target. Two services (BSAN and BSM) were statistically below the target of 90%. Screening commenced in this age group in July, 2004, and the biennial data cannot be interpreted.

**Time taken from final diagnostic biopsy to reporting assessment results, women aged 50-64 years**

For the last 6 months and last 2 years the percentage of women receiving final diagnostic biopsy results within 5 working days (of all those receiving final diagnostic results) was 85.1% and 88.0% respectively; these were statistically below the target of 90%. 4 of the 6 lead providers were below target for the biennial rate.

**Time taken from final diagnostic biopsy to reporting assessment results, women aged 65-69 years**

The BSA percentage of women receiving final diagnostic biopsy results within 5 working days was 89.7%, which approached the target of 90%. Across lead providers, 4 of the 6 services either made or approached the target. One service (BSC) was statistically below the target of 90%. Screening commenced in this age group in July, 2004, and the biennial data cannot be interpreted.

**5.e. First surgical treatment within 20 working days (Oct 01- Sept 03)**

*Description:*

The time from when a woman receives her final diagnostic results to the date of her first surgical treatment

*Target:*

90% of women should normally receive their first surgical treatment within 20 working days of receiving their final diagnostic results.

**Table 5e** Percentage of Women receiving surgical treatment

| Lead Provider | For Women Screened from October 2002 to September 2004 |                       |  |
|---------------|--|-----------------------|--|
|               | First surgical treatment within 20 working days        | Number having surgery | % receiving surgical treatment within 20 work days |
| BSAN          | 192  | 351                   | 54.7% (50.4-59.0)                                  |
| BSM           | 127  | 181                   | 70.2% (64.6-75.7)                                  |
| BSCtoC        | 91   | 129                   | 70.5% (63.6-76.7)                                  |
| BSC           | 82   | 100                   | 82.0% (76.0-88.0)                                  |
| BSS           | 212  | 261                   | 81.2% (77.0-85.1)                                  |
| BSHC          | 73   | 86                    | 84.9% (77.9-90.7)                                  |
| BSA Total     | 777  | 1108                  | 70.1% (67.9-72.4)                                  |

**Comment:**

**First surgical treatment within 20 working days (Oct 01- Sept 03), women aged 50-64 years**

The BSA percentage was 70% which was statistically below the target value of 90%. All lead providers were below the target value for this indicator, with the exception of BSHC where upper confidence limits contained values above the target.

## APPENDIX A: POPULATION DENOMINATORS AND NOTES ON METHOD

### Population denominator data

The eligible populations in these reports have been calculated from projected resident populations in each lead provider district, provided by Statistics New Zealand. The projections are based on the 2001 New Zealand Census, assuming medium fertility, medium mortality, medium inter-ethnic mobility and medium migration. The projected population as at December 2004 has been used. This is the same population that is used for all BSA quality and contract monitoring for the period July 2004 to June 2005.

Table 1. Population projections BreastScreen Aotearoa (2004).

| Lead Provider | Summary by Age Group |        |        |       |       | Total Eligible Population (50-64) |
|---------------|----------------------|--------|--------|-------|-------|-----------------------------------|
|               | 45-49                | 50-54  | 55-59  | 60-64 | 65-69 |                                   |
| BSAN          | 52145                | 44870  | 39290  | 30050 | 23365 | 114210                            |
| BSM           | 22405                | 19495  | 17485  | 14595 | 11935 | 51575                             |
| BSCtoC        | 19075                | 16810  | 14990  | 12375 | 10335 | 44175                             |
| BSC           | 15750                | 13725  | 12460  | 9475  | 7445  | 35660                             |
| BSS           | 24990                | 22435  | 20435  | 15925 | 12980 | 58795                             |
| BSHC          | 10360                | 8975   | 8265   | 6625  | 5625  | 23865                             |
| BSA Total     | 144725               | 126310 | 112925 | 89045 | 71685 | 328280                            |

### Ethnic group denominator

The denominators for each ethnic group are also taken from the census and calculated from projected resident populations in each lead provider district, provided by Statistics New Zealand.

In the census it is possible to choose more than one ethnic group. Where more than one category has been chosen, priority is given to certain ethnic groups for the purposes of classification. Thus, if a woman chooses more than one category and one of these is Maori, she is counted as Maori. Table 2 below uses the prioritised definition of ethnicity.

Table 2. Ethnic populations 2004

| Lead Provider      | Summary by Ethnicity |         |        | Total  |
|--------------------|----------------------|---------|--------|--------|
|                    | Maori                | Pacific | Other  |        |
| <i>45-49 years</i> |                      |         |        |        |
| BSAN               | 5720                 | 4445    | 41980  | 52145  |
| BSM                | 4480                 | 325     | 17600  | 22405  |
| BSCtoC             | 3330                 | 265     | 15480  | 19075  |
| BSC                | 1555                 | 875     | 13320  | 15750  |
| BSS                | 1250                 | 240     | 23500  | 24990  |
| BSHC               | 530                  | 70      | 9760   | 10360  |
| BSA Total          | 16865                | 6220    | 121640 | 144725 |
| <i>50-64 years</i> |                      |         |        |        |
| BSAN               | 9820                 | 8500    | 95890  | 114210 |
| BSM                | 7660                 | 525     | 43390  | 51575  |
| BSCtoC             | 5950                 | 455     | 37770  | 44175  |
| BSC                | 2620                 | 1720    | 31320  | 35660  |
| BSS                | 2135                 | 390     | 56270  | 58795  |
| BSHC               | 945                  | 130     | 22790  | 23865  |
| BSA Total          | 29130                | 11720   | 287430 | 328280 |
| <i>65-69 years</i> |                      |         |        |        |
| BSAN               | 1820                 | 1665    | 19880  | 23365  |
| BSM                | 1460                 | 125     | 10350  | 11935  |
| BSCtoC             | 1160                 | 85      | 9090   | 10335  |
| BSC                | 395                  | 310     | 6740   | 7445   |
| BSS                | 340                  | 60      | 12580  | 12980  |
| BSHC               | 140                  | 15      | 5470   | 5625   |
| BSA Total          | 5315                 | 2260    | 64110  | 71685  |

**A note on Confidence Intervals**

95% confidence intervals have been reported for a number of indicators in this report. From the Central Limit Theorem, the estimate for a particular indicator - for example, invasive cancer detection rate in the previous 6 months - is assumed to come from a hypothetical distribution of values for that indicator. The overall average value of this hypothetical distribution is the universal or 'true' invasive cancer detection rate for the population being studied. The 95% confidence interval indicates that there is a 1 in 20 chance that the 'true' population rate (or proportion, or mean) lies outside the range of values contained by the 95% confidence interval. Thus, the wider the 95% confidence interval, the less precise the estimate is to the true population parameter. Additionally, different statistical distributions provide more accurate and appropriate estimations of the 95% Confidence intervals, and depend upon the type of indicator being studied, and the frequency of the event. For this report, 95% Confidence intervals for rare events occurring in a population have been calculated using the Poisson distribution. For indicators where proportions represent cases and non-cases the 95% Confidence interval is based on the Exact Binomial distribution.

**A note on reported differences between observed and target values**

The magnitude of the difference between the observed value and the target value is important in the interpretation of each indicator. In this report, differences of >10% are noted as important differences. Differences of <5% are considered not important. For each indicator differences between the observed value and the target value need to be interpreted in the context and meaning of the indicator under investigation. If the standard is 80% then a 10% difference would contain values ranging from 72%-88%. If the standard is 10%, then a 10% difference would contain values ranging from 9%-11%. As a guide, slight differences can be considered to be of a magnitude of 0-5%, moderate differences of 5-10%, and important differences >10%.

## **APPENDIX B: GLOSSARY OF TERMS**

### **Assessment**

Follow-up investigations if something of concern is seen on a mammogram.

### **Assessment rate**

Number of women referred to assessment as a percentage of all women screened

### **Asymptomatic**

Women who do not have symptoms of breast cancer

### **Biopsy**

A sample of a breast abnormality, or the whole abnormality, is removed and examined under a microscope by a pathologist to determine whether it is cancer

### **Benign biopsy weight**

The weight of the open biopsy specimen presented to the pathologist

### **Benign biopsy rate**

Number of open biopsies that turn out to be benign lesions, expressed as a proportion of women screened

### **BSA**

BreastScreen Aotearoa

### **Coverage**

Population-based measure of the percentage of women in the target age group (45-49, 50-64, 65-69 years) who have had a screening mammogram in the programme

### **Initial screen**

A woman's first screening mammogram at any BSA Lead Provider

### **False negative**

A negative screening test result in a woman who does have cancer at the time the screening is conducted.

### **False positive result**

The proportion of women who are recalled to assessment, but after assessment are found not to have cancer

### **Lead Provider**

A service provider who contracts with the National Screening Unit to provide services purchased as a result of the *Request for Proposal*. This term encompasses those individuals or organisations who act as a nominee, agent or subcontracted provider to a Lead Provider.

### **Positive predictive value**

The proportion of women screened positive who are ultimately diagnosed as having cancer

### **Pre-operative diagnosis rate**

Number of women in which a needle biopsy provides the definitive diagnosis (pre-operative diagnosis), as a percentage of all women diagnosed with breast cancer in the programme

### **Rescreen:**

A screening mammogram undertaken two years after the previous screen. In this report, rescreen refers to women who returned for screening within 27 months following their previous screen.

### **Sensitivity**

The proportion of truly diseased persons in the screened population who are identified as diseased by the screening test. Sensitivity is a measure of the probability of correctly diagnosing a case, or the probability that any given case will be identified by the test.

**Specificity**

The proportion of women without breast cancer at screening who have a negative screen result. This is estimated by expressing the number of women who have a negative screen result as a percentage of all women screened excluding the women screened positive with cancer.

**Subsequent screen**

A woman's screening mammogram at a BSA Lead Provider when she has previously attended BSA.

**Technical recall rate**

Number of women who have to return to a screening unit (either Fixed or Mobile) for further films to complete their screening episode, expressed as a percentage of the number screened

**Technical reject rate**

Number of films rejected as a percentage of the number of films taken, calculated separately for women who are screened in a fixed unit and a mobile unit